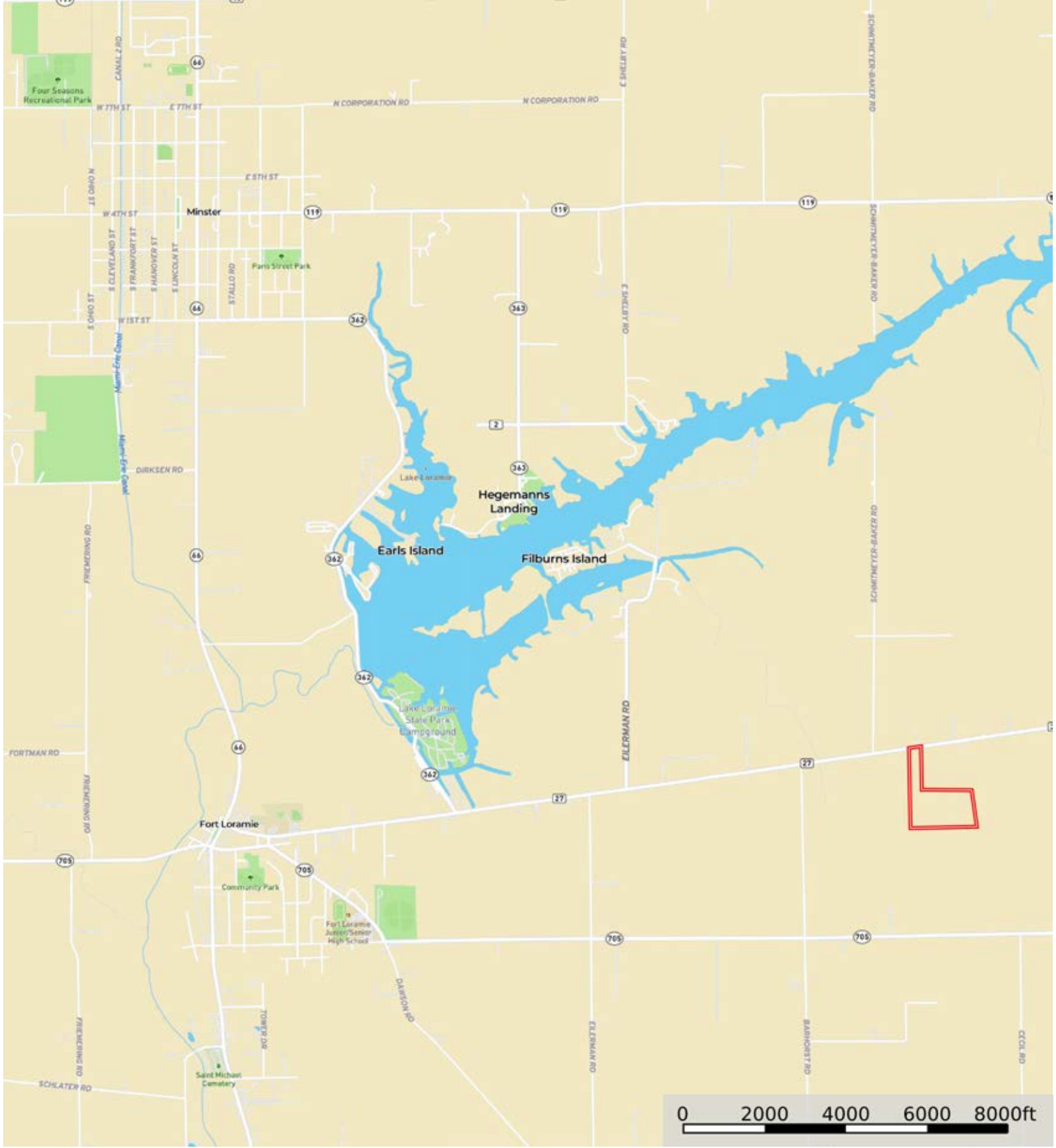


Raterman/Fifth Third Trust

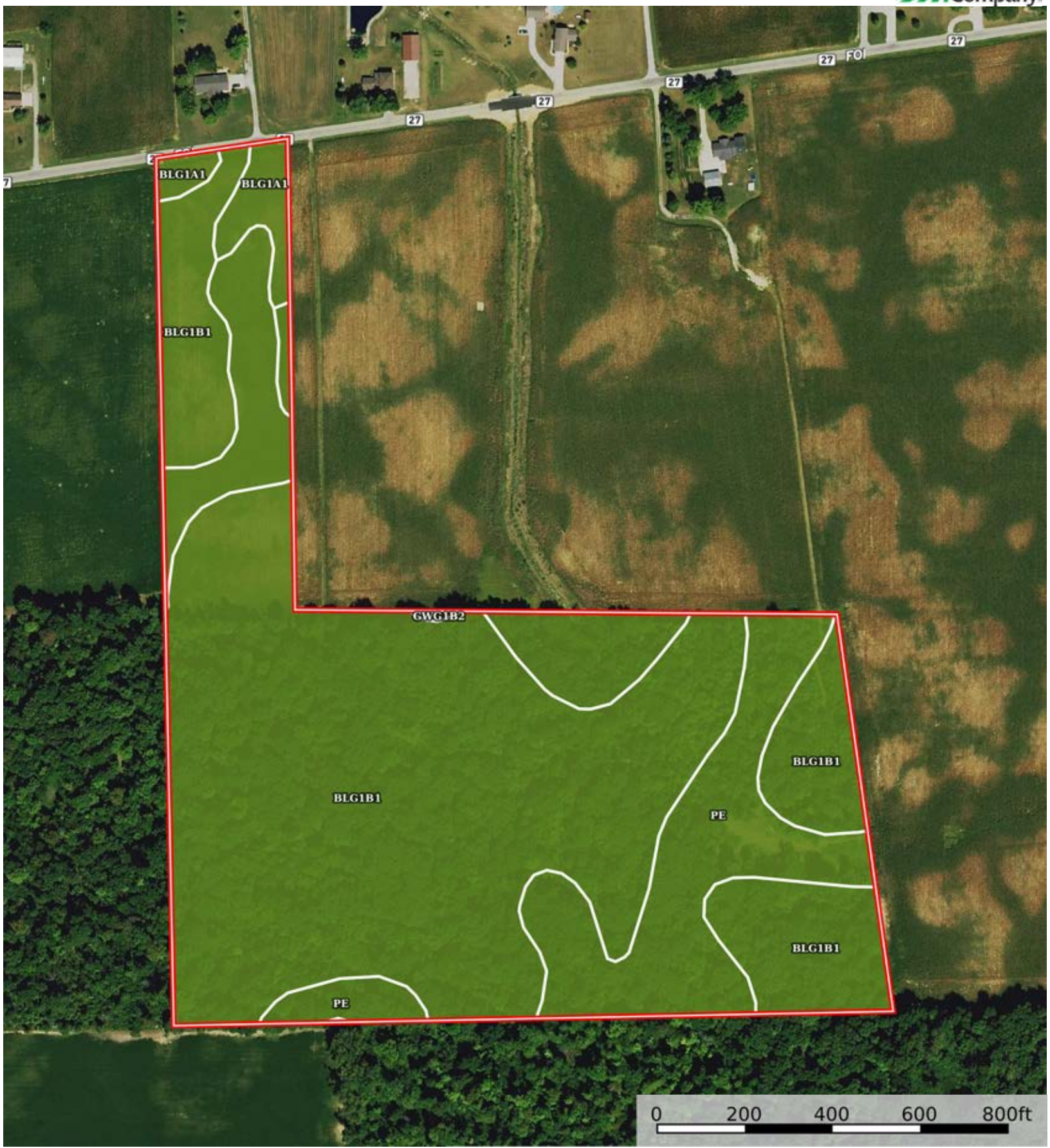
Shelby County, Ohio, 41.425 AC +/-



Boundary



 Boundary



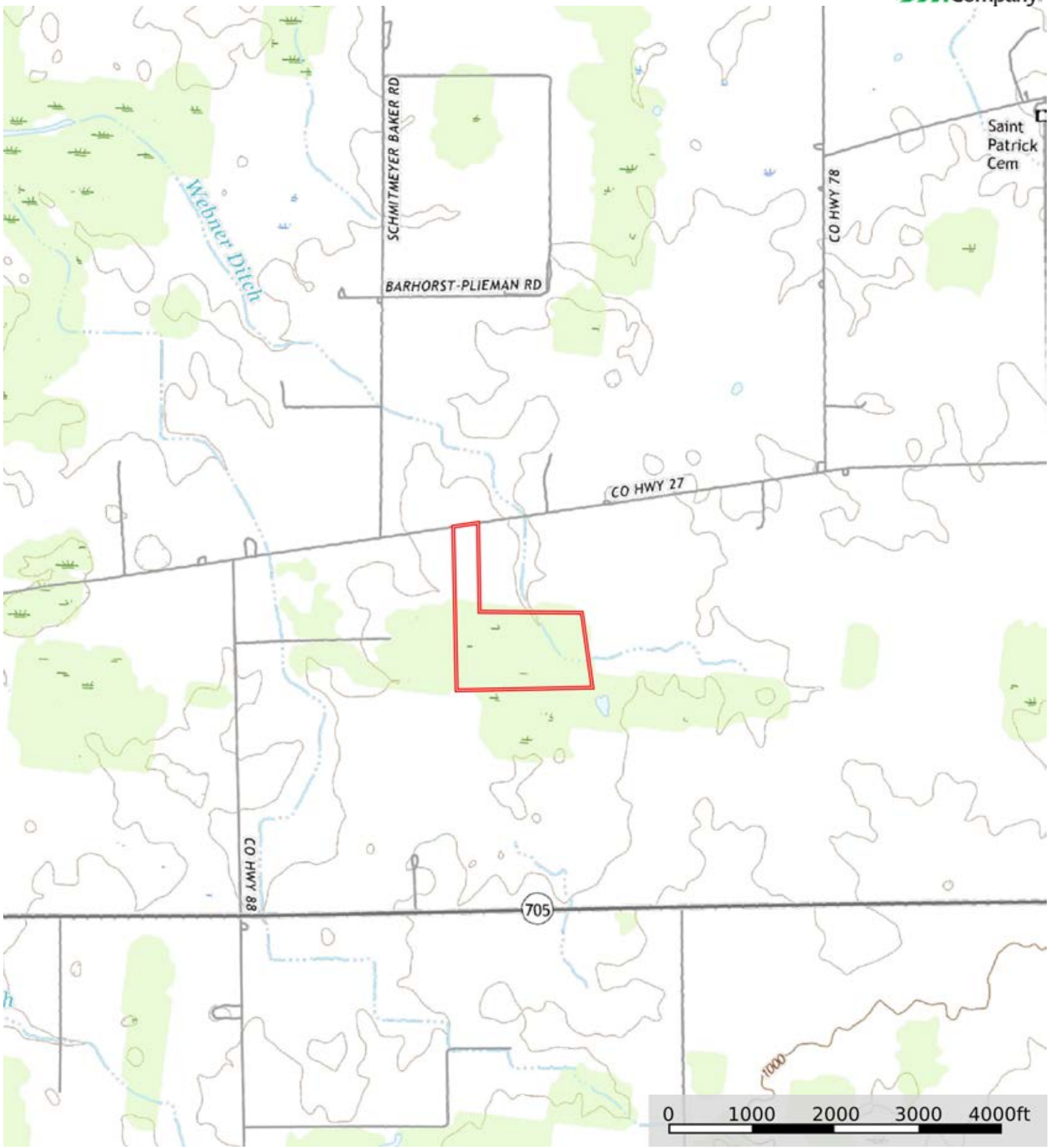
 Boundary

|  Boundary 41.04 ac

SOIL CODE	SOIL DESCRIPTION	ACRES	%	CPI	NCCPI	CAP
Blg1B1	Blount silt loam, ground moraine, 2 to 4 percent slopes	29.78	72.55	0	67	2e
Pe	Pewamo silty clay loam, 0 to 1 percent slopes	10.15	24.73	0	76	2w
Blg1A1	Blount silt loam, ground moraine, 0 to 2 percent slopes	1.07	2.61	0	69	2w
Gwg1B2	Glynwood silt loam, ground moraine, 2 to 6 percent slopes, eroded	0.04	0.1	0	56	2e
TOTALS		41.04(*)	100%	-	69.25	2.0

(*) Total acres may differ in the second decimal compared to the sum of each acreage soil. This is due to a round error because we only show the acres of each soil with two decimal.





 Boundary