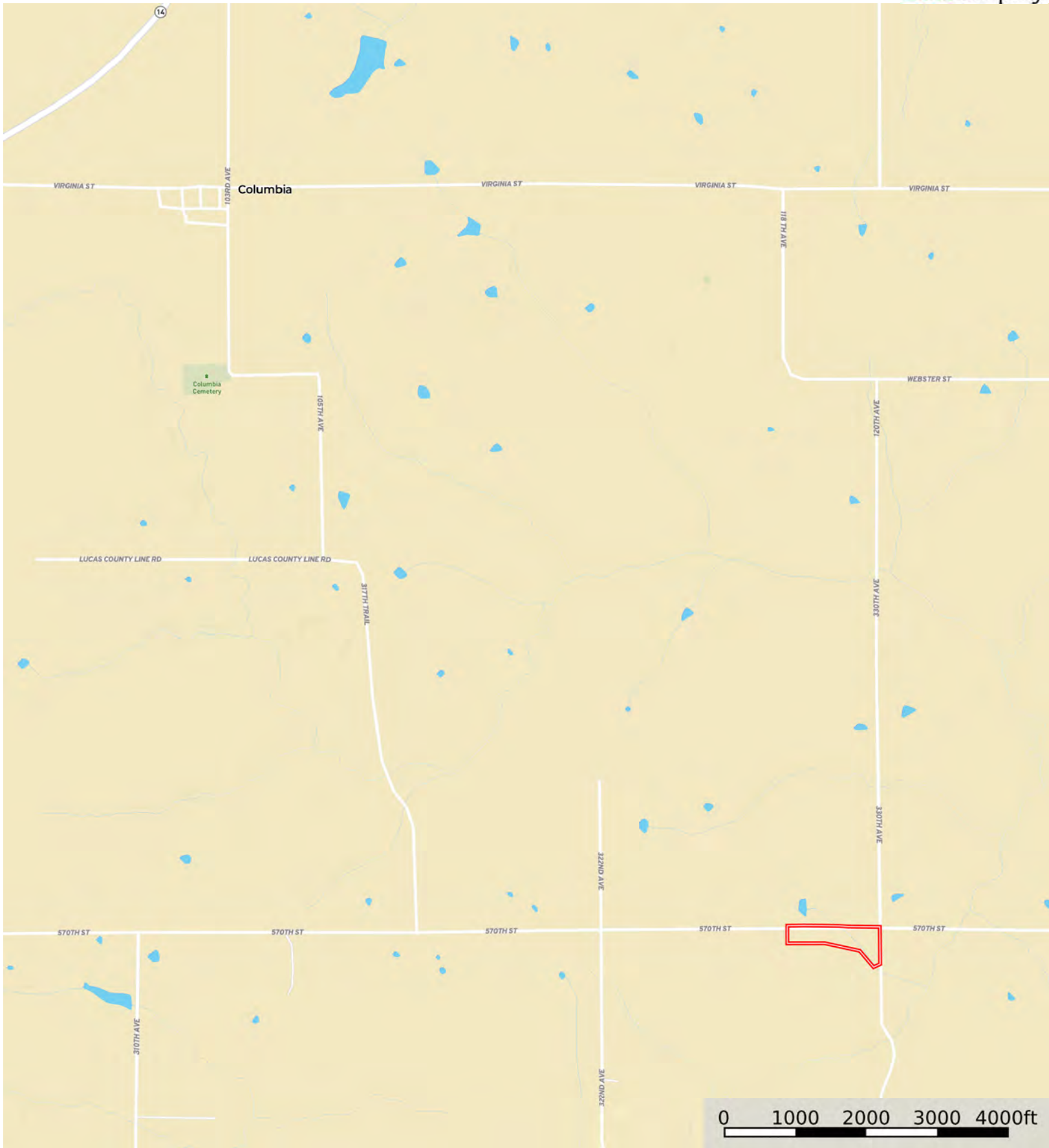


Regina L. McDonald Revocable Trust

Lucas County, Iowa, 9.85 AC +/-



Boundary



Boundary



Boundary



| Boundary 9.58 ac

SOIL CODE	SOIL DESCRIPTION	ACRES	%	CSR2	CPI	NCCPI	CAP
131C2	Pershing silty clay loam, 5 to 9 percent slopes, moderately eroded	2.5	26.1	62.0	0	69	3e
13B	Zook-Olmitz-Vesser complex, 0 to 5 percent slopes	1.95	20.35	68.0	0	78	2w
1313E2	Munterville silty clay loam, 14 to 18 percent slopes, moderately eroded	1.74	18.16	22.0	0	56	6e
592D2	Mystic clay loam, 9 to 14 percent slopes, moderately eroded	1.44	15.03	10.0	0	67	4e
451E2	Caleb loam, 14 to 18 percent slopes, moderately eroded	0.82	8.56	31.0	0	75	6e
W	Water	0.6	6.26	-	0	-	-
1313D2	Munterville silty clay loam, 9 to 14 percent slopes, moderately eroded	0.28	2.92	34.0	0	59	6e
792D2	Armstrong clay loam, 9 to 14 percent slopes, moderately eroded	0.25	2.61	5.0	0	58	4e
TOTALS		9.58(*)	100%	39.3	-	63.78	3.92









(*) Total acres may differ in the second decimal compared to the sum of each acreage soil. This is due to a round error because we only show the acres of each soil with two decimal.

Capability Legend

Increased Limitations and Hazards

Decreased Adaptability and Freedom of Choice Users

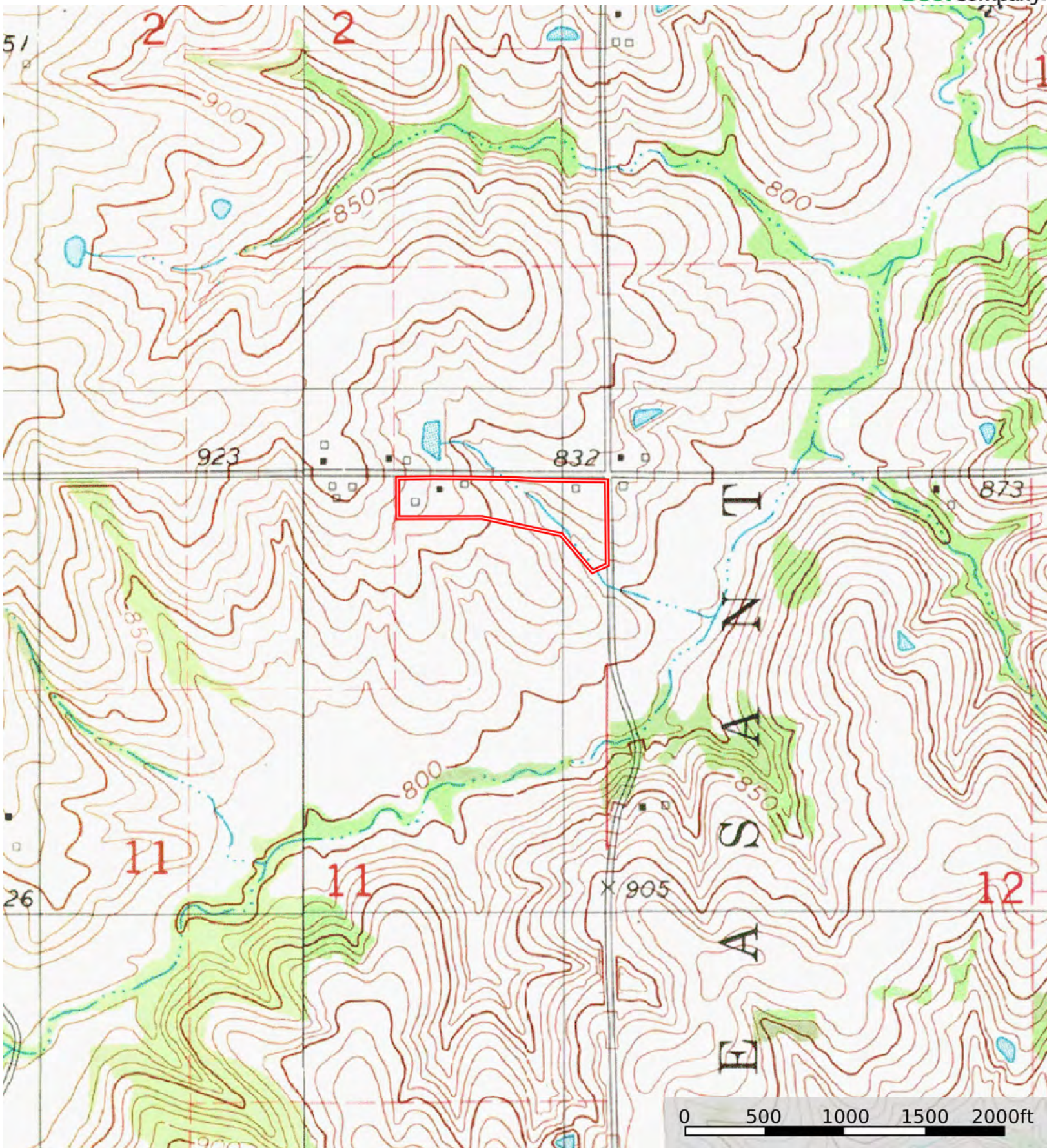
Land, Capability

								
	1	2	3	4	5	6	7	8
'Wild Life'	•	•	•	•	•	•	•	•
Forestry	•	•	•	•	•	•	•	
Limited	•	•	•	•	•	•	•	
Moderate	•	•	•	•	•	•		
Intense	•	•	•	•	•			
Limited	•	•	•	•				
Moderate	•	•	•					
Intense	•	•						
Very Intense	•							

Grazing Cultivation

(c) climatic limitations (e) susceptibility to erosion

(s) soil limitations within the rooting zone (w) excess of water



Boundary