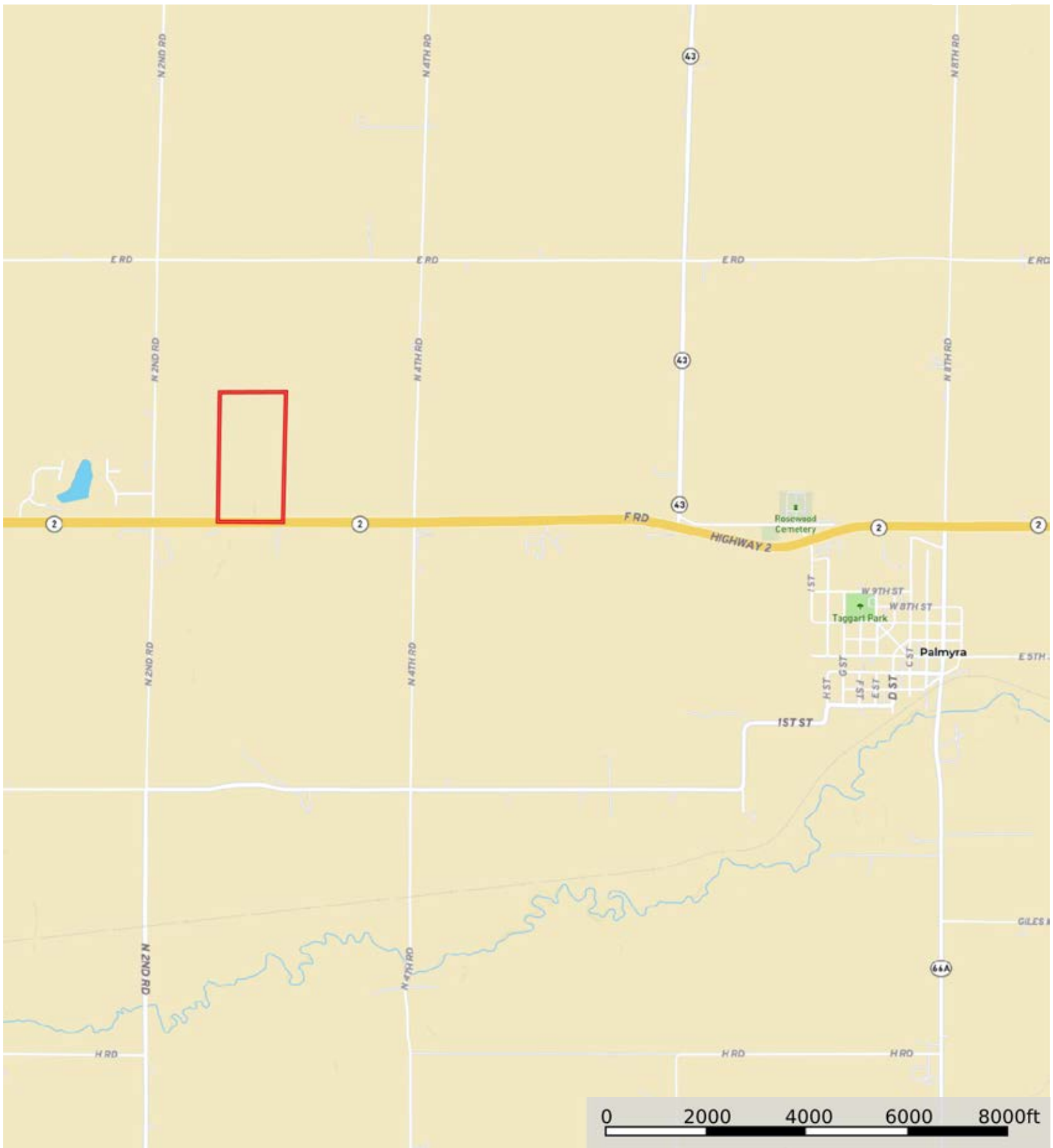


# Roland Meyer

Otoe County, Nebraska, 73 AC +/-



 Boundary



 Boundary



**Roland Meyer**  
Otoe County, Nebraska, 73 AC +/-



 Boundary

|  Boundary 77.61 ac

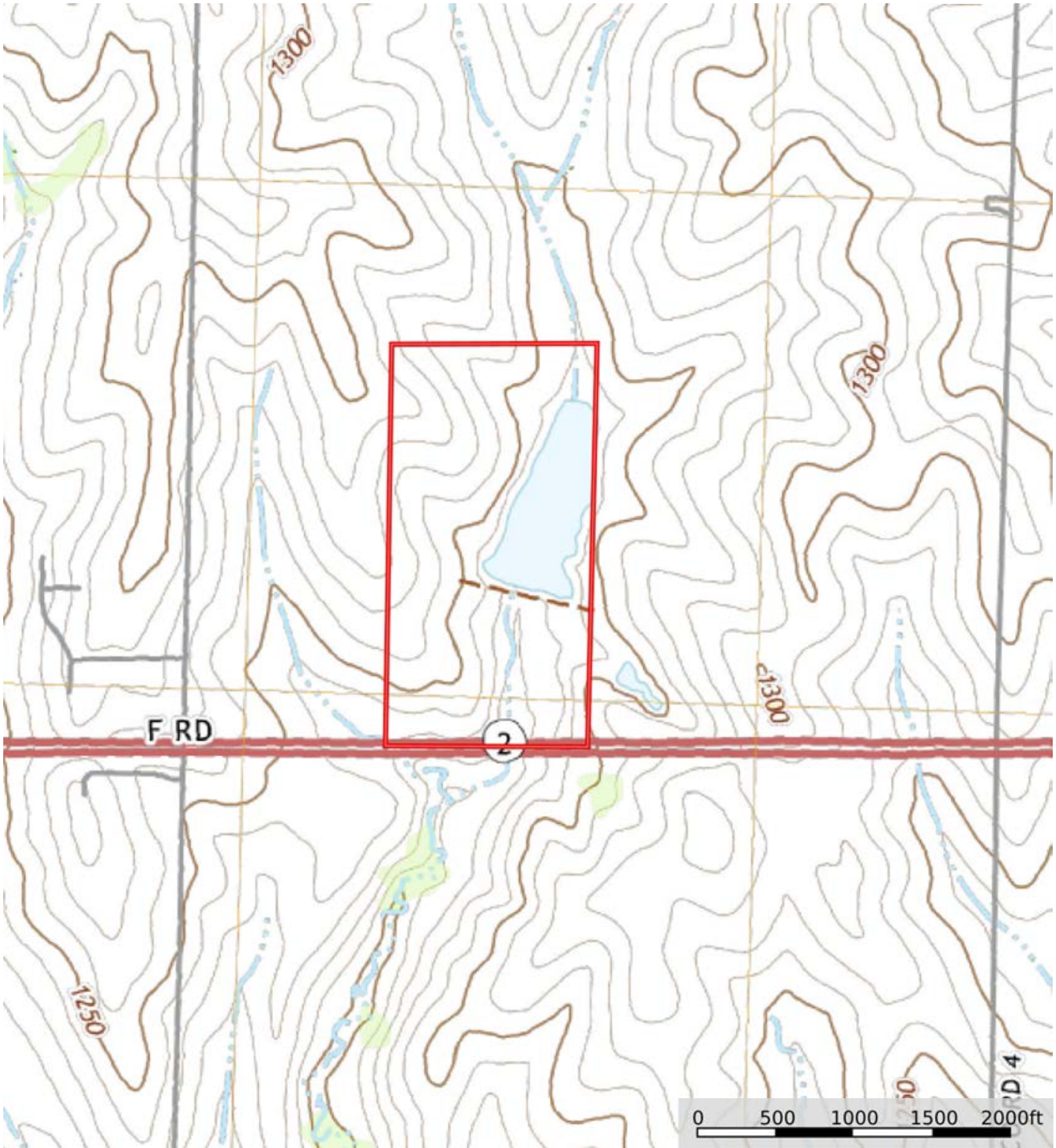
SOIL CODE	SOIL DESCRIPTION	ACRES	%	CPI	NCCPI	CAP
7695	Wymore silty clay, 3 to 6 percent slopes, eroded	24.87	32.04	0	53	3e
7870	Nodaway-Colo complex, occasionally flooded	20.82	26.82	0	92	2w
7501	Pawnee clay loam, 4 to 8 percent slopes, eroded	17.66	22.75	0	40	3e
7446	Morrill-Malmo, eroded, complex, 3 to 11 percent slopes	5.43	7.0	0	59	4e
7689	Wymore silty clay loam, 0 to 2 percent slopes	4.51	5.81	0	65	2s
7546	Shelby and Burchard clay loams, 11 to 17 percent slopes	4.32	5.57	0	57	4e
TOTALS		77.61(*)	100%	-	61.84	2.8

(\*) Total acres may differ in the second decimal compared to the sum of each acreage soil. This is due to a round error because we only show the acres of each soil with two decimal.





**Roland Meyer**  
Otoe County, Nebraska, 73 AC +/-



 Boundary