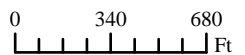


Tract Boundary Noncropland

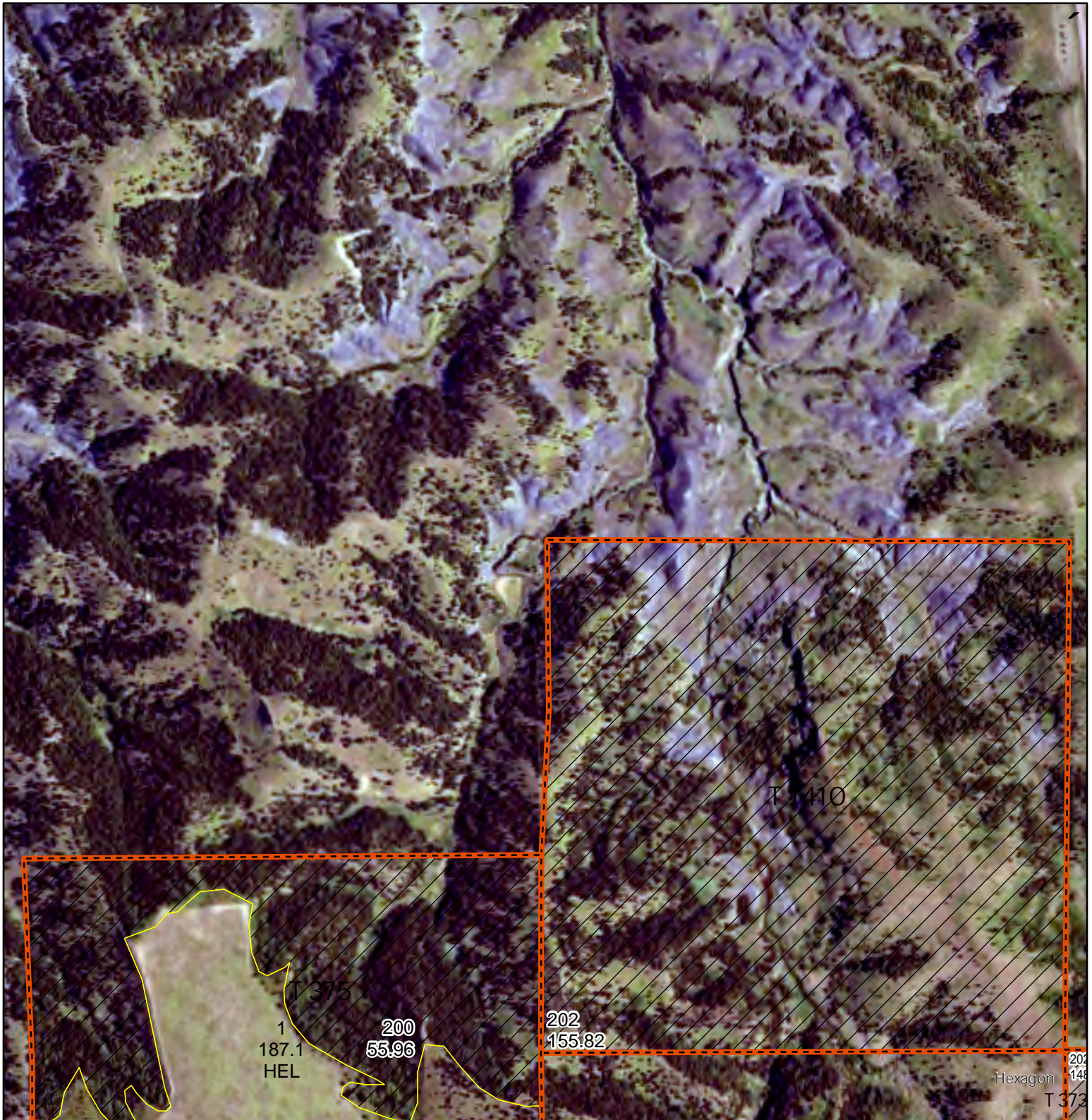
Wetland Determination Identifiers

- Restricted Use
- Limited Restrictions
- Exempt from Conservation
- Compliance Provisions

2026 Program Year
Phy. County: Buffalo
2025 imagery
S25 T106N R071W



United States Department of Agriculture (USDA) Farm Service Agency (FSA) maps are for FSA Program administration only. This map does not represent a legal survey or reflect actual ownership; rather it depicts the information provided directly from the producer and/or National Agricultural Imagery Program (NAIP) imagery. The producer accepts the data 'as is' and assumes all risks associated with its use. USDA-FSA assumes no responsibility for actual or consequential damage incurred as a result of any user's reliance on this data outside FSA Programs. Wetland identifiers do not represent the size, shape, or specific determination of the area. Refer to your original determination (CPA-026 and attached maps) for exact boundaries and determinations or contact USDA Natural Resources Conservation Service (NRCS). USDA is an equal opportunity provider, employer, and lender. Map Created 03/12/2026

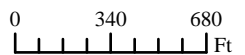


Tract Boundary Cropland
 Noncropland

Wetland Determination Identifiers

- Restricted Use
- Limited Restrictions
- Exempt from Conservation
- Compliance Provisions

2026 Program Year
 Phy. County: Buffalo
 2025 imagery
S26 T106N R071W



United States Department of Agriculture (USDA) Farm Service Agency (FSA) maps are for FSA Program administration only. This map does not represent a legal survey or reflect actual ownership; rather it depicts the information provided directly from the producer and/or National Agricultural Imagery Program (NAIP) imagery. The producer accepts the data 'as is' and assumes all risks associated with its use. USDA-FSA assumes no responsibility for actual or consequential damage incurred as a result of any user's reliance on this data outside FSA Programs. Wetland identifiers do not represent the size, shape, or specific determination of the area. Refer to your original determination (CPA-026 and attached maps) for exact boundaries and determinations or contact USDA Natural Resources Conservation Service (NRCS). USDA is an equal opportunity provider, employer, and lender. Map Created 03/12/2026

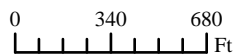


Tract Boundary Cropland Noncropland

Wetland Determination Identifiers

- & Restricted Use
- * Limited Restrictions
- Exempt from Conservation
-) Compliance Provisions

2026 Program Year
Phy. County: Buffalo
2025 imagery
S35 T106N R071W



United States Department of Agriculture (USDA) Farm Service Agency (FSA) maps are for FSA Program administration only. This map does not represent a legal survey or reflect actual ownership; rather it depicts the information provided directly from the producer and/or National Agricultural Imagery Program (NAIP) imagery. The producer accepts the data 'as is' and assumes all risks associated with its use. USDA-FSA assumes no responsibility for actual or consequential damage incurred as a result of any user's reliance on this data outside FSA Programs. Wetland identifiers do not represent the size, shape, or specific determination of the area. Refer to your original determination (CPA-026 and attached maps) for exact boundaries and determinations or contact USDA Natural Resources Conservation Service (NRCS). USDA is an equal opportunity provider, employer, and lender. Map Created 03/12/2026



- Tract Boundary
- Cropland
- Noncropland

Wetland Determination Identifiers

- & Restricted Use
- # Limited Restrictions
- * Exempt from Conservation
-) Compliance Provisions

2026 Program Year
 Phy. County: Buffalo
 2025 imagery
S36 T106N R071W

