

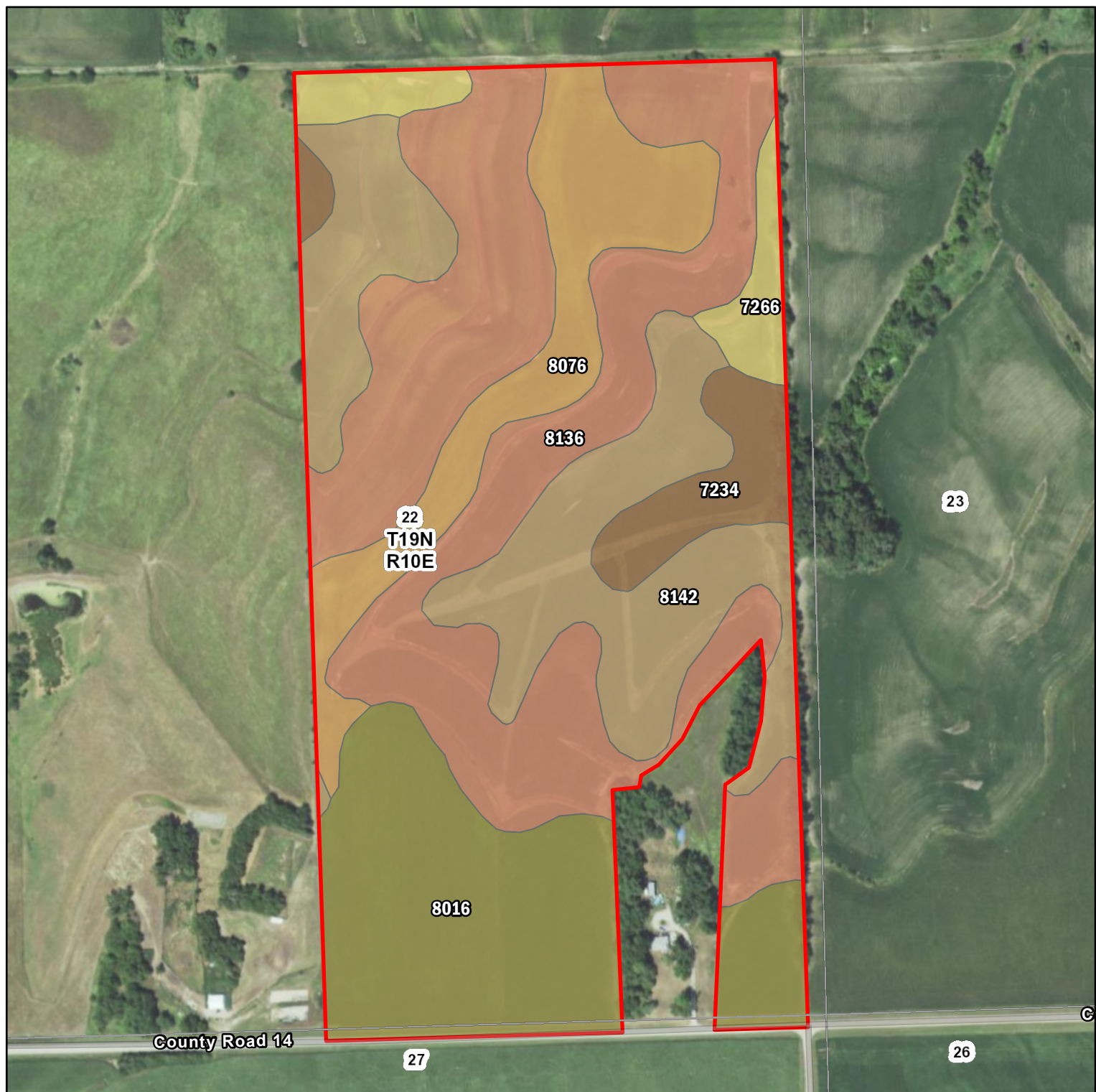
L-2300376
Washington County, Nebraska

Latitude: 41.5383°N
Longitude: 96.2026°W
Imagery Source: USDA NAIP
Soil Data Source: USDA NRCS
Boundaries are Approximate



L-2300376
Washington County, Nebraska

Latitude: 41.6°N
Longitude: 96.2735°W
Imagery Source: USDA NAIP
Soil Data Source: USDA NRCS
Boundaries are Approximate

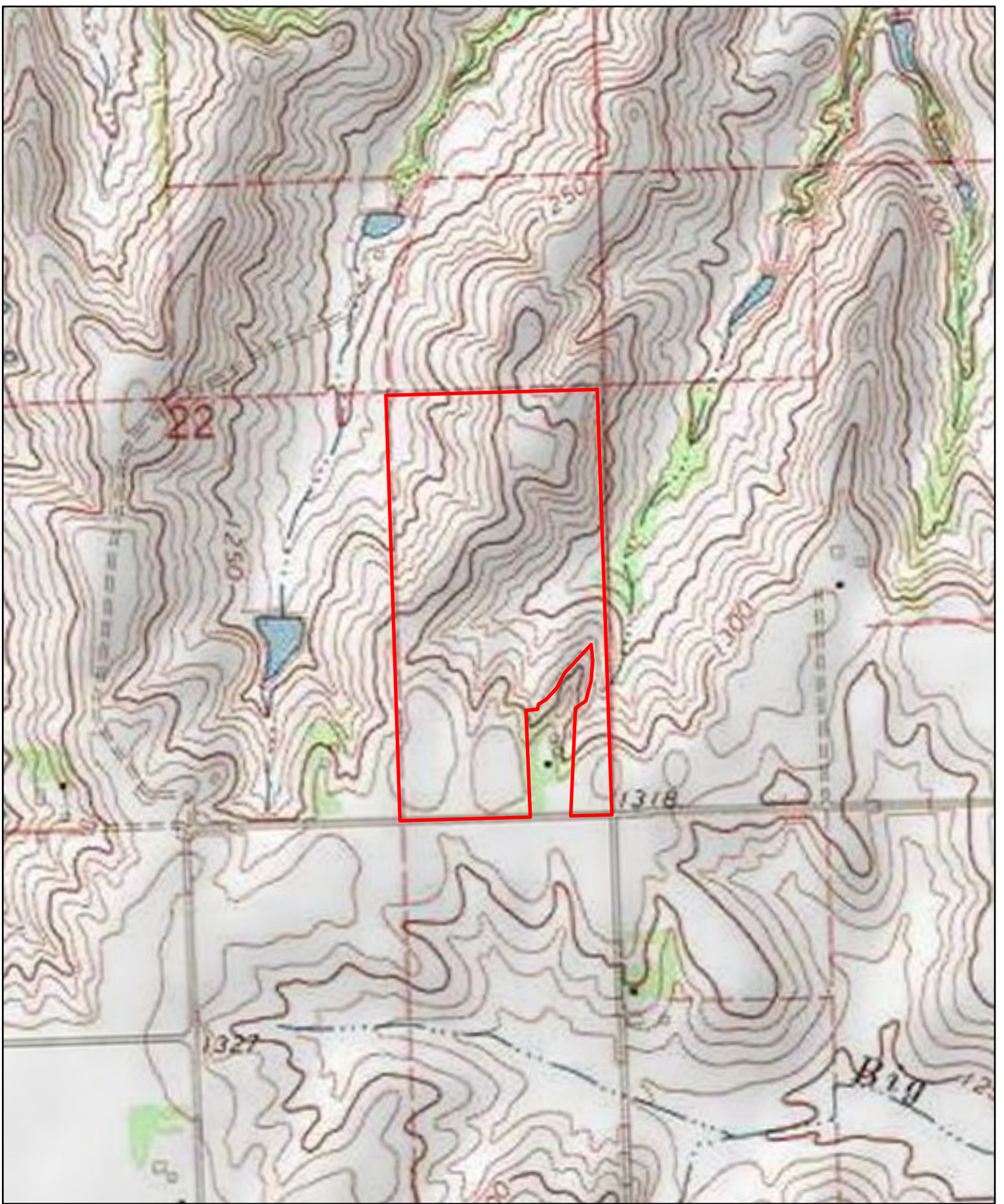


Map Symbol	Name	Non-IRR LCC	IRR LCC	ACRES
8136	Pohocco-Ida complex, 11 to 17 percent slopes, eroded	4e		27.5
8142	Pohocco-Monona complex, 11 to 17 percent slopes, eroded	4e		16.1
8016	Marshall silty clay loam, dry, 0 to 2 percent slopes	2e	2e	15.1
8076	Monona silt loam, 1 to 6 percent slopes, eroded	2e	3e	8.8
7234	Judson silty clay loam, 2 to 6 percent slopes	2e	3e	3.7
7266	Burchard-Steinauer clay loams, 11 to 17 percent slopes, eroded	6e		3
TOTAL				74.2



L-2300376
Washington County, Nebraska

Latitude: 41.6°N
 Longitude: 96.2735°W
 Imagery Source: USDA NAIP
 Soil Data Source: USDA NRCS
 Boundaries are Approximate



L-2300376
Washington County, Nebraska

Latitude: 41.6°N
Longitude: 96.2735°W
Imagery Source: USDA NAIP
Soil Data Source: USDA NRCS
Boundaries are Approximate