

Farm #75266
Harold Eggers Farm
Clinton County, Iowa

Latitude: 41.9246°N
 Longitude: -90.2415°W
 Imagery Source: USDA NAIP
 Soil Data Source: USDA NRCS
 Boundaries Are Approximate



Sec. 17

T83N R06E

Sec. 16

Sec. 20

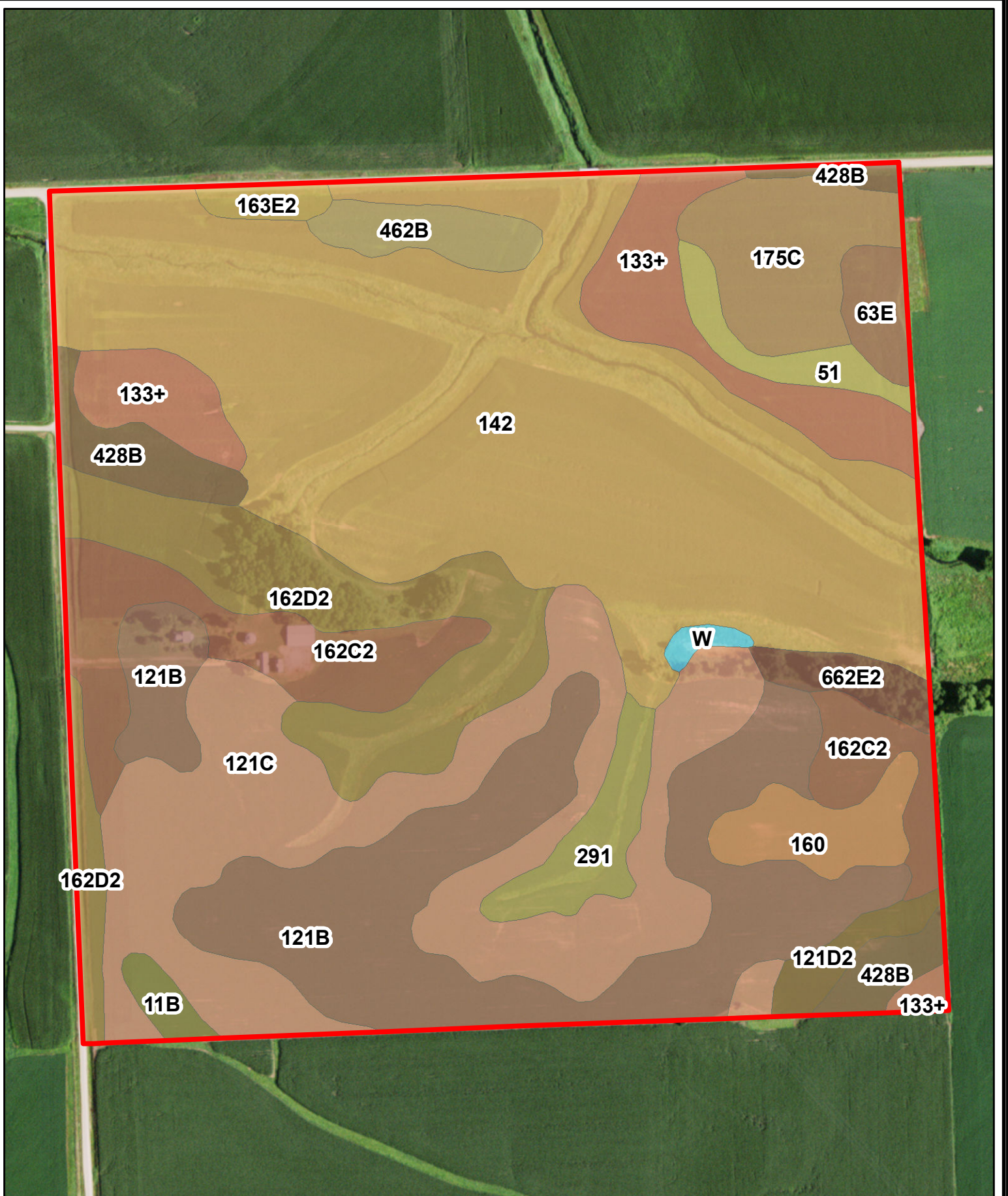
Sec. 21



**Farmers
National
Company**

**Farm #75266
Harold Eggers Farm
Clinton County, Iowa**

Latitude: 41.9937°N
Longitude: -90.2817°W
Imagery Source: USDA NAIP
Soil Data Source: USDA NRCS
Boundaries Are Approximate



Farm #75266
Harold Eggers Farm
Clinton County, Iowa

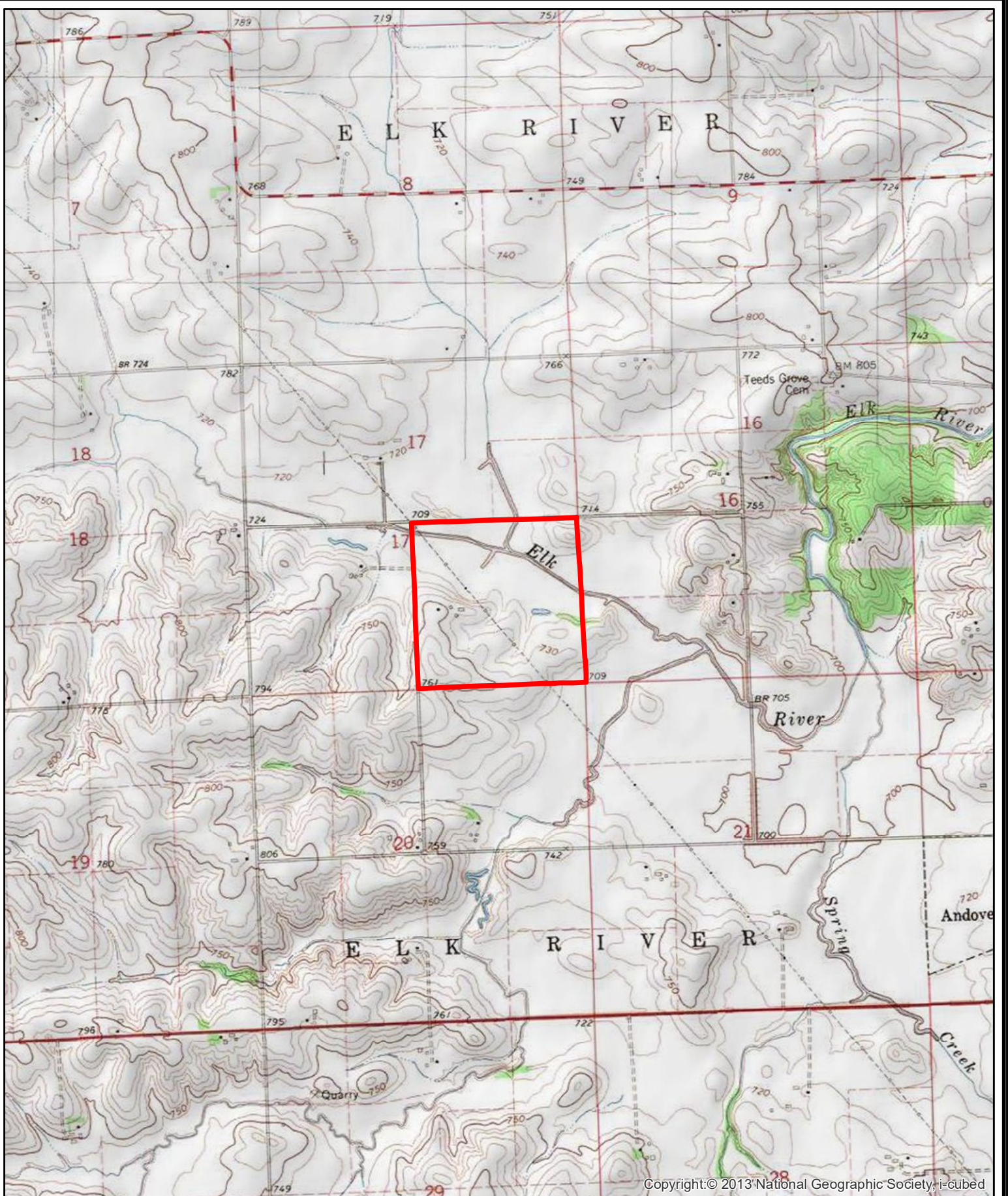
Latitude: 41.9937°N
 Longitude: -90.2817°W
 Imagery Source: USDA NAIP
 Soil Data Source: USDA NRCS
 Boundaries Are Approximate

MAP		NON IRR		
SYMBOL	NAME	LCC	CSR2	ACRES
142	Chaseburg silt loam, moderately well drained, 0 to 2 percent slopes	IIw	79	52.1
121C	Tama silt loam, driftless, 5 to 9 percent slopes	IIIe	90	25.0
121B	Tama silt loam, driftless, 2 to 6 percent slopes	Ile	95	23.5
162D2	Downs silt loam, 9 to 14 percent slopes, moderately eroded	IIIe	54	13.4
162C2	Downs silt loam, 5 to 9 percent slopes, moderately eroded	IIIe	80	10.2
133+	Colo silt loam, 0 to 2 percent slopes, occasionally flooded, overwash	IIw	78	8.9
175C	Dickinson fine sandy loam, 5 to 9 percent slopes	IIIe	45	5.9
428B	Ely silt loam, 2 to 5 percent slopes	Ile	87	4.4
160	Walford silt loam, 0 to 1 percent slopes	IIIw	85	3.2
291	Atterberry silt loam, 1 to 3 percent slopes	Ile	85	3.1
462B	Downs silt loam, terrace, 2 to 5 percent slopes	Ile	90	2.5
51	Vesser silt loam, 0 to 2 percent slopes	IIw	74	2.0
63E	Chelsea loamy fine sand, 9 to 18 percent slopes	VIIIs	5	1.7
662E2	Mt. Carroll silt loam, 14 to 18 percent slopes, moderately eroded	IVe	43	1.7
121D2	Tama silt loam, driftless, 9 to 14 percent slopes, moderately eroded	IIIe	86	1.5
163E2	Fayette silt loam, 14 to 18 percent slopes, moderately eroded	IVe	38	1.0
11B	Colo-Ely complex, 0 to 5 percent slopes	IIw	83	0.9
W	Water		0	0.5
TOTAL			78.7	161.3



Farm #75266
Harold Eggers Farm
Clinton County, Iowa

Latitude: 41.9937°N
Longitude: -90.2817°W
Imagery Source: USDA NAIP
Soil Data Source: USDA NRCS
Boundaries Are Approximate



Farm #75266
Harold Eggers Farm
Clinton County, Iowa

Latitude: 41.9937°N
Longitude: -90.2817°W
Imagery Source: USDA NAIP
Soil Data Source: USDA NRCS
Boundaries Are Approximate