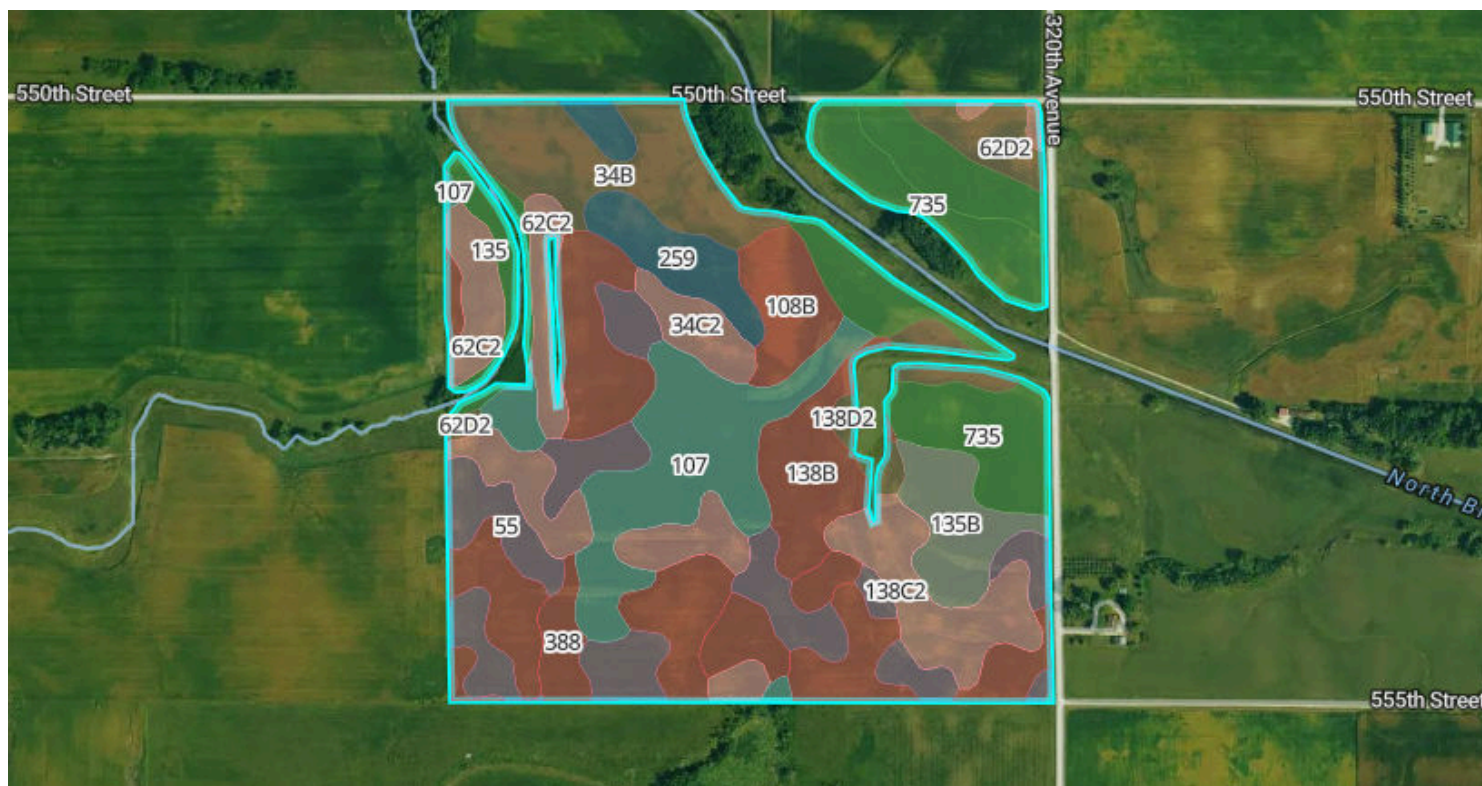


Soils

140.4 Acres, 3 Boundaries



74.5/100 NCCPI

72.2/100 CSR2

	Code	Soil Description	% of Selection	Acres	Non-IRR Class	IRR Class	State Score (CSR2)	NCCPI
●	138B	Clarion loam, 2 to 6 percent slopes	18.0%	25.2	2e	--	89	83.5
●	55	Nicollet clay loam, 1 to 3 percent slopes	11.8%	16.6	1	--	89	81.4
●	735	Havelock clay loam, 0 to 2 percent slopes	11.1%	15.6	2w	--	74	77.3
●	107	Webster clay loam, 0 to 2 percent slopes	10.9%	15.3	2w	--	86	83.2
●	138...	Clarion loam, 6 to 10 percent slopes, moderately eroded	9.9%	14	3e	--	83	68.7

Soils



140.4 Acres, 3 Boundaries

	Code	Soil Description	% of Selection	Acres	Non-IRR Class	IRR Class	State Score (CSR2)	NCCPI
●	34B	Estherville sandy loam, 2 to 6 percent slopes	8.8%	12.4	3s	--	27	46.5
●	135	Coland clay loam, 0 to 2 percent slopes, occasionally flooded	5.0%	7	2w	--	76	82.5
●	388	Kossuth silty clay loam, 0 to 2 percent slopes	4.2%	6	2w	--	72	76.6
●	259	Biscay clay loam, 0 to 2 percent slopes	4.1%	5.8	2w	--	52	69.3
●	135B	Coland clay loam, 2 to 5 percent slopes	4.0%	5.6	2e	--	69	90.7
●	62C2	Storden loam, 6 to 10 percent slopes, moderately eroded	4.0%	5.7	3e	--	64	67.9
●	108B	Wadena loam, 2 to 6 percent slopes	3.2%	4.6	2e	--	52	61.8
●	62D2	Storden loam, 10 to 16 percent slopes, moderately eroded	2.2%	3.2	4e	--	41	64
●	34C2	Estherville sandy loam, 5 to 9 percent slopes, moderately...	1.9%	2.7	4s	--	10	45
●	138...	Clarion loam, 9 to 14 percent slopes, moderately eroded	0.7%	1	3e	--	56	70.6

140.4 Acres, 3 Boundaries

