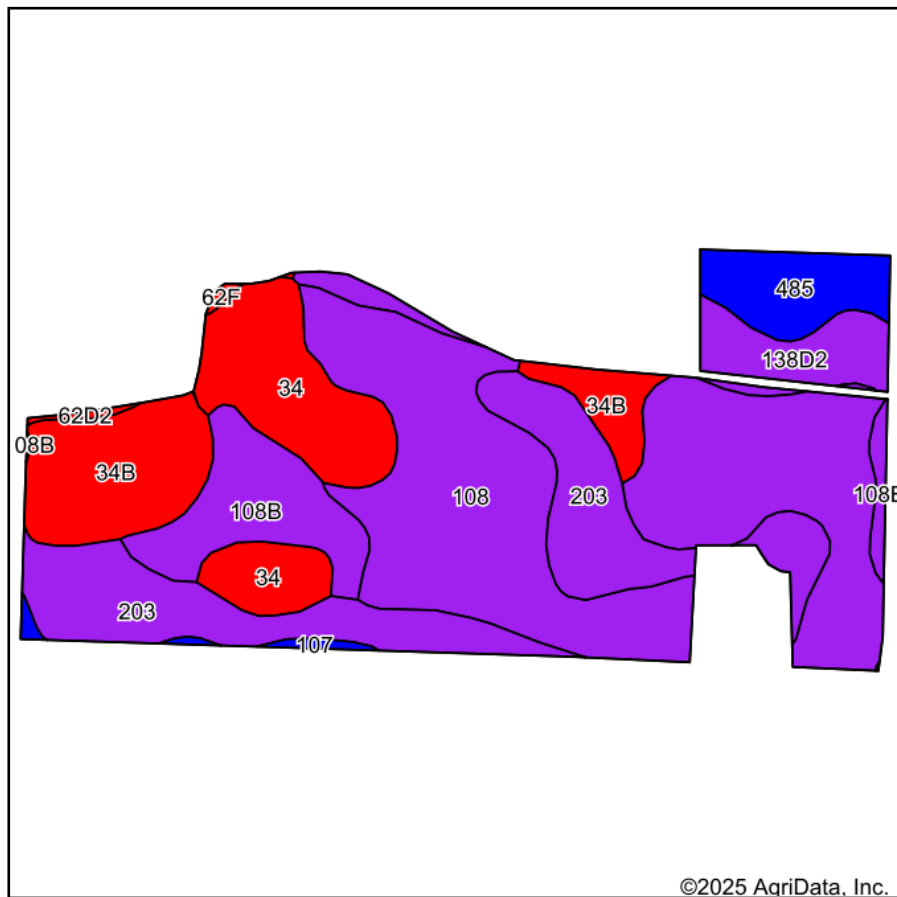
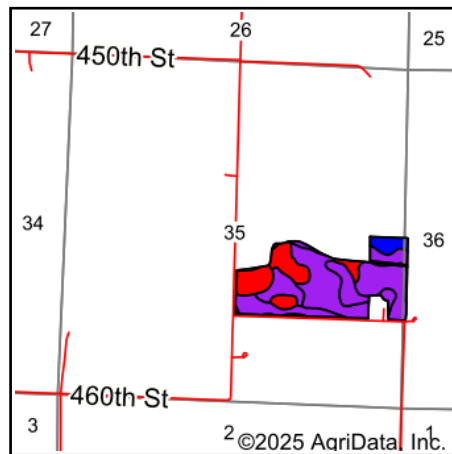


# Soils Map



Soils data provided by USDA and NRCS.



State: **Iowa**  
 County: **Pocahontas**  
 Location: **35-93N-31W**  
 Township: **Des Moines**  
 Acres: **57.83**  
 Date: **4/6/2025**



Maps Provided By:  
**surety**  
 CUSTOMIZED ONLINE MAPPING  
 © AgriData, Inc. 2023 www.AgriDataInc.com



Area Symbol: IA151, Soil Area Version: 31

Code	Soil Description	Acres	Percent of field	CSR2 Legend	Non-Irr Class *c	CSR2**	CSR	*n NCCPI Soybeans
108	Wadena loam, 0 to 2 percent slopes	22.65	39.3%		IIIs	56	52	52
203	Cylinder loam, 0 to 2 percent slopes	11.03	19.1%		IIIs	58	74	65
34	Estherville sandy loam, 0 to 2 percent slopes	6.62	11.4%		IIIs	23	24	29
34B	Estherville sandy loam, 2 to 6 percent slopes	6.21	10.7%		IIIs	27	19	36
108B	Wadena loam, 2 to 6 percent slopes	4.81	8.3%		IIe	52	48	50
138D2	Clarion loam, 9 to 14 percent slopes, moderately eroded	3.12	5.4%		IIIe	56	53	60
485	Spillville loam, 0 to 2 percent slopes, occasionally flooded	2.80	4.8%		IIw	88	84	87
107	Webster clay loam, 0 to 2 percent slopes	0.36	0.6%		IIw	86	81	82
62D2	Storden loam, 10 to 16 percent slopes, moderately eroded	0.13	0.2%		IVe	41	40	65
62F	Belview loam, 16 to 30 percent slopes	0.10	0.2%		VIe	17	11	52
Weighted Average					2.29	50.8	50.8	*n 52.3

\*\*IA has updated the CSR values for each county to CSR2.

\*n: The aggregation method is "Weighted Average using all components"

\*c: Using Capabilities Class Dominant Condition Aggregation Method

Soils data provided by USDA and NRCS.