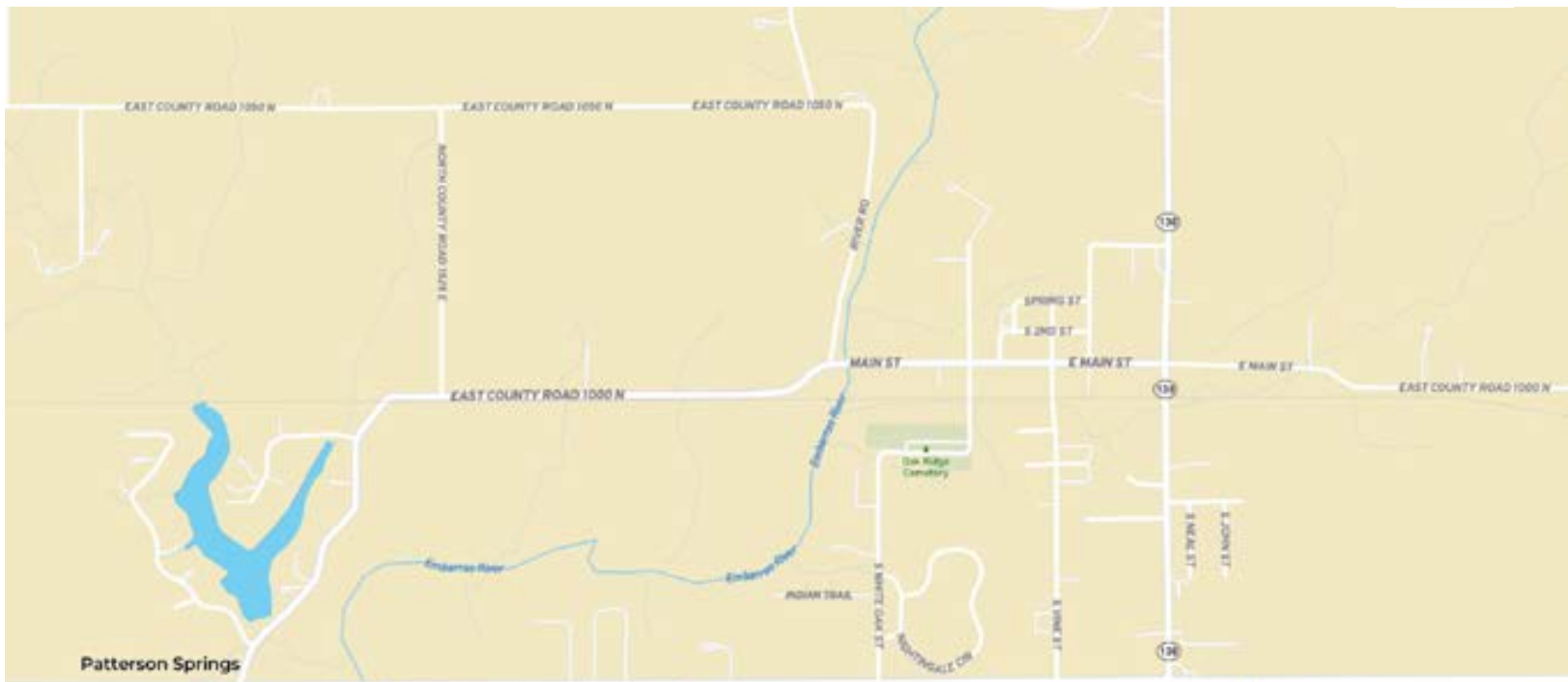


Statzer Farms LLC

Douglas County, Illinois, 82.89 AC +/-



 Boundary



 Boundary



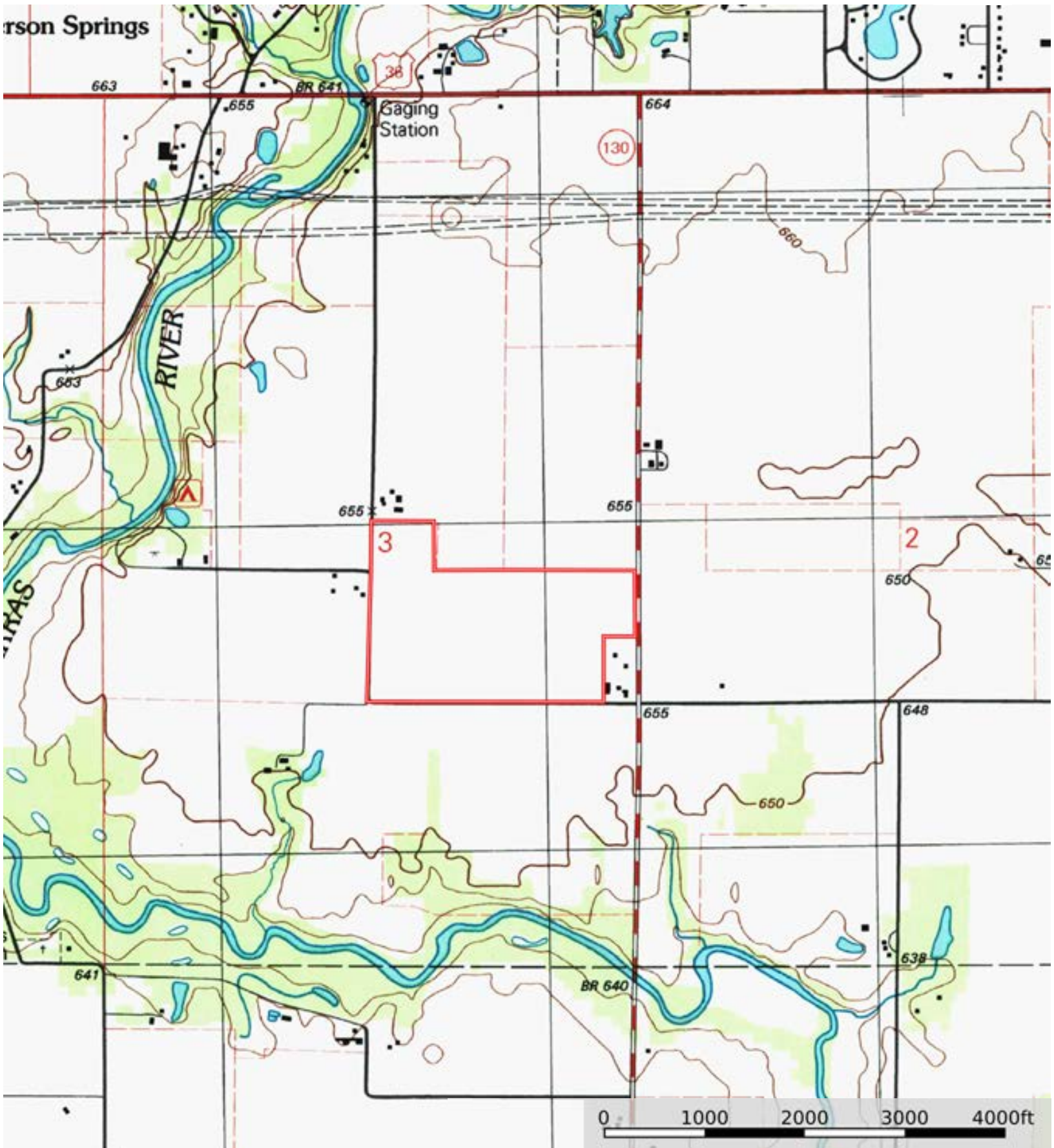
 Boundary

|  Boundary 82.72 ac

| SOIL CODE | SOIL DESCRIPTION | ACRES | % | PI | NCCPI | CAP |
|-----------|--|----------|-------|--------|-------|------|
| 152A | Drummer silty clay loam, 0 to 2 percent slopes | 30.38 | 36.73 | 144 | 83 | 2w |
| 134B | Camden silt loam, 2 to 5 percent slopes | 16.37 | 19.79 | 117 | 91 | 2e |
| 330A | Peotone silty clay loam, 0 to 2 percent slopes | 9 | 10.88 | 123 | 58 | 3w |
| 242A | Kendall silt loam, 0 to 2 percent slopes | 8.83 | 10.68 | 125 | 87 | 2w |
| 802D | Orthents, loamy, undulating | 7.4 | 8.95 | 0 | 72 | 4e |
| 132A | Starks silt loam, 0 to 2 percent slopes | 6.75 | 8.16 | 119 | 89 | 2w |
| 570B | Martinsville silt loam, 2 to 5 percent slopes | 2.2 | 2.66 | 112 | 80 | 2e |
| 136A | Brooklyn silt loam, 0 to 2 percent slopes | 1.79 | 2.16 | 112 | 81 | 2w |
| TOTALS | | 82.72(*) | 100% | 117.89 | 81.68 | 2.29 |

(*) Total acres may differ in the second decimal compared to the sum of each acreage soil. This is due to a round error because we only show the acres of each soil with two decimal.





 Boundary