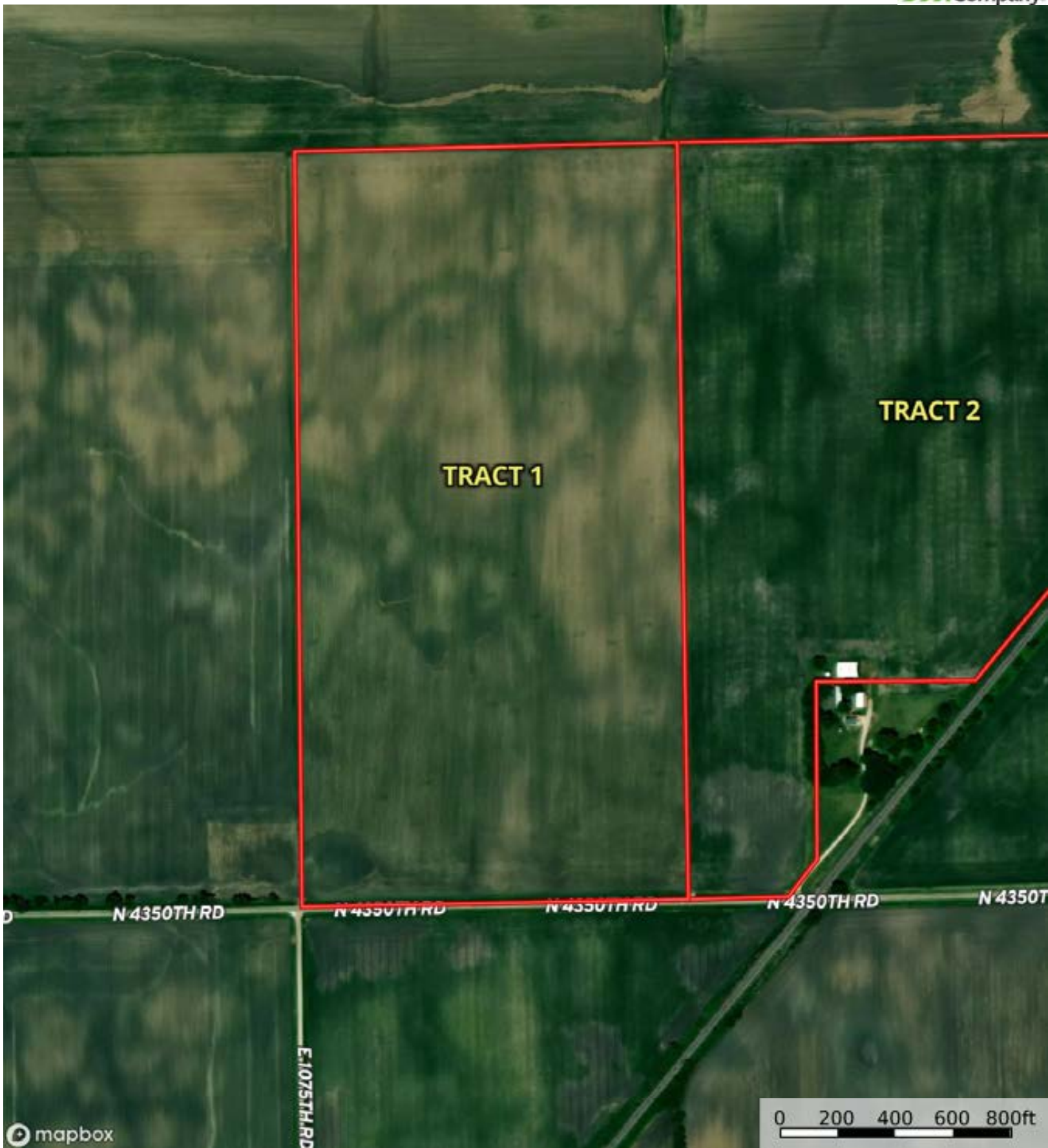



 Boundary




 Boundary





 Boundary



 Boundary

|  Boundary 80.58 ac


SOIL CODE	SOIL DESCRIPTION	ACRES	%	PI	NCCPI	CAP
152A	Drummer silty clay loam, 0 to 2 percent slopes	32.09	39.82	144	83	2w
198A	Elburn silt loam, 0 to 2 percent slopes	20.88	25.91	143	91	1
51A	Muscataune silt loam, 0 to 2 percent slopes	12.7	15.76	147	96	1
814A	Muscataune-Buckhart silt loams, 0 to 3 percent slopes	5.45	6.76	144	92	1
199B	Plano silt loam, 2 to 5 percent slopes	4.57	5.67	141	93	2e
67A	Harpster silty clay loam, 0 to 2 percent slopes	2.87	3.56	133	79	2w
679B	Blackberry silt loam, 2 to 5 percent slopes	2.02	2.51	141	90	2e
TOTALS		80.58(*)	100%	143.58	88.33	1.52

(\*) Total acres may differ in the second decimal compared to the sum of each acreage soil. This is due to a round error because we only show the acres of each soil with two decimal.







 Boundary





Boundary 85.86 ac


SOIL CODE	SOIL DESCRIPTION	ACRES	%	PI	NCCPI	CAP
152A	Drummer silty clay loam, 0 to 2 percent slopes	29.97	34.9	144	83	2w
51A	Muscataune silt loam, 0 to 2 percent slopes	29.92	34.84	147	96	1
199B	Plano silt loam, 2 to 5 percent slopes	14.29	16.64	141	93	2e
198A	Elburn silt loam, 0 to 2 percent slopes	6.64	7.73	143	91	1
679B	Blackberry silt loam, 2 to 5 percent slopes	2.89	3.37	141	90	2e
814A	Muscataune-Buckhart silt loams, 0 to 3 percent slopes	1.9	2.21	144	92	1
67A	Harpster silty clay loam, 0 to 2 percent slopes	0.25	0.29	133	79	2w
TOTALS		85.86(*)	100%	144.32	90.23	1.55

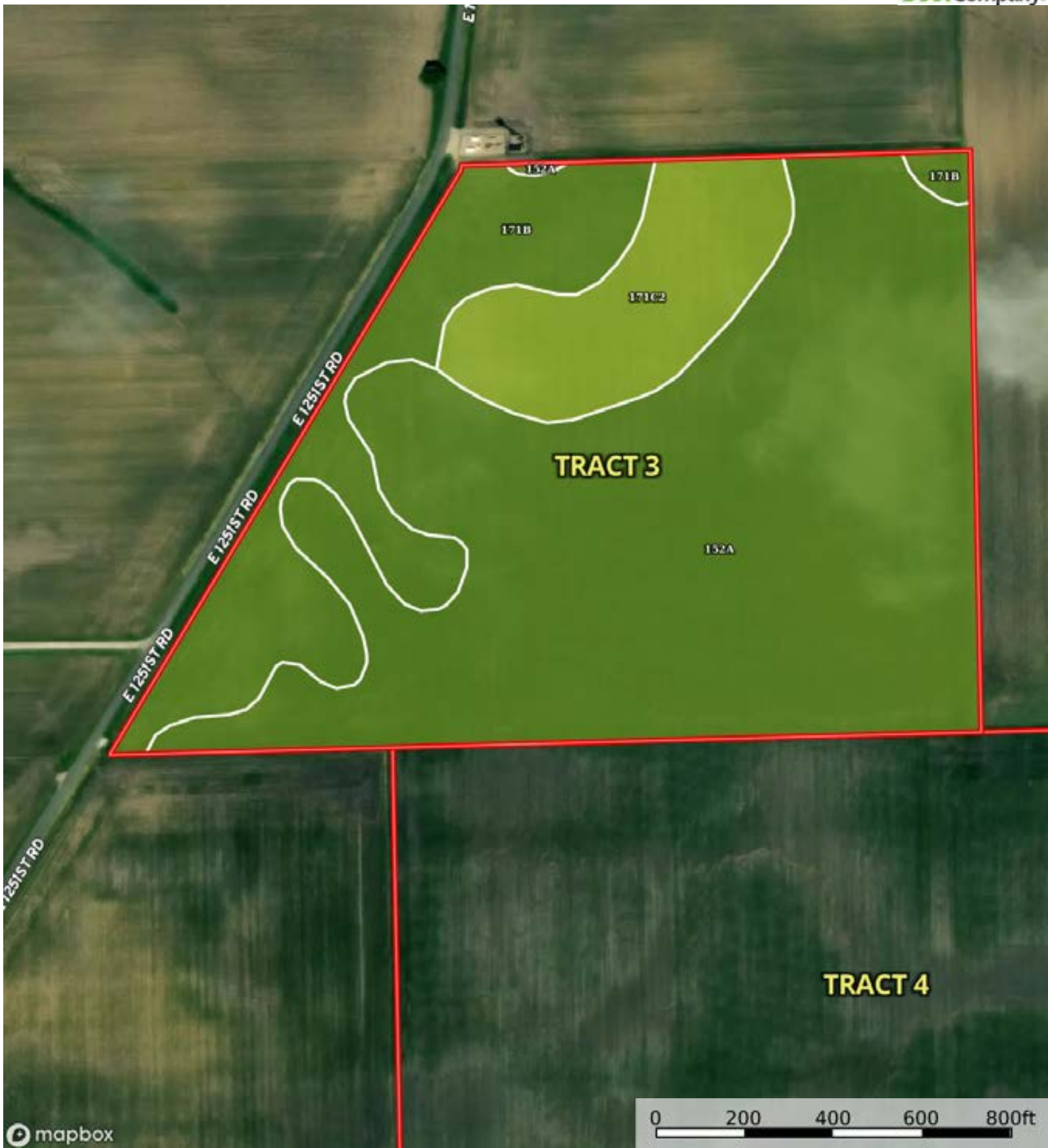
(\*) Total acres may differ in the second decimal compared to the sum of each acreage soil. This is due to a round error because we only show the acres of each soil with two decimal.








 Boundary



 Boundary




|  Boundary 46.79 ac

SOIL CODE	SOIL DESCRIPTION	ACRES	%	PI	NCCPI	CAP
152A	Drummer silty clay loam, 0 to 2 percent slopes	32.11	68.61	144	83	2w
171B	Catlin silt loam, 2 to 5 percent slopes	8.89	19.0	137	77	2e
171C2	Catlin silt loam, 5 to 10 percent slopes, eroded	5.79	12.37	128	72	3e
TOTALS		46.79(*)	100%	140.66	80.48	2.12

(\*) Total acres may differ in the second decimal compared to the sum of each acreage soil. This is due to a round error because we only show the acres of each soil with two decimal.






 Boundary





 Boundary

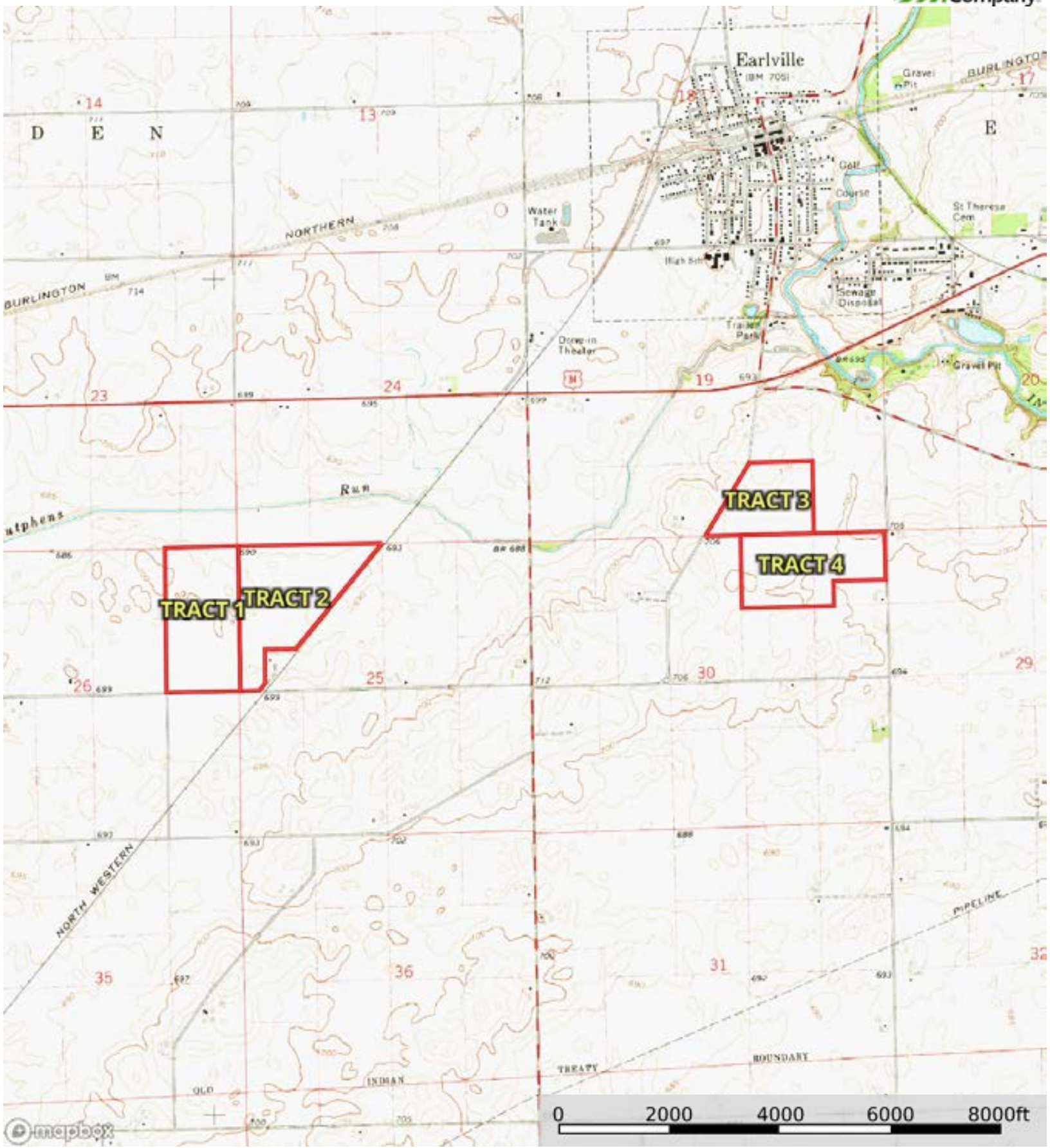
|  Boundary 69.74 ac

SOIL CODE	SOIL DESCRIPTION	ACRES	%	PI	NCCPI	CAP
152A	Drummer silty clay loam, 0 to 2 percent slopes	40.6	58.23	144	83	2w
67A	Harpster silty clay loam, 0 to 2 percent slopes	21.76	31.21	133	79	2w
154A	Flanagan silt loam, 0 to 2 percent slopes	5.24	7.52	144	90	1
86B	Osco silt loam, 2 to 5 percent slopes	2.14	3.07	138	92	2e
TOTALS		69.74(*)	100%	140.4 2	82.58	1.92

(\*) Total acres may differ in the second decimal compared to the sum of each acreage soil. This is due to a round error because we only show the acres of each soil with two decimal.







 Boundary