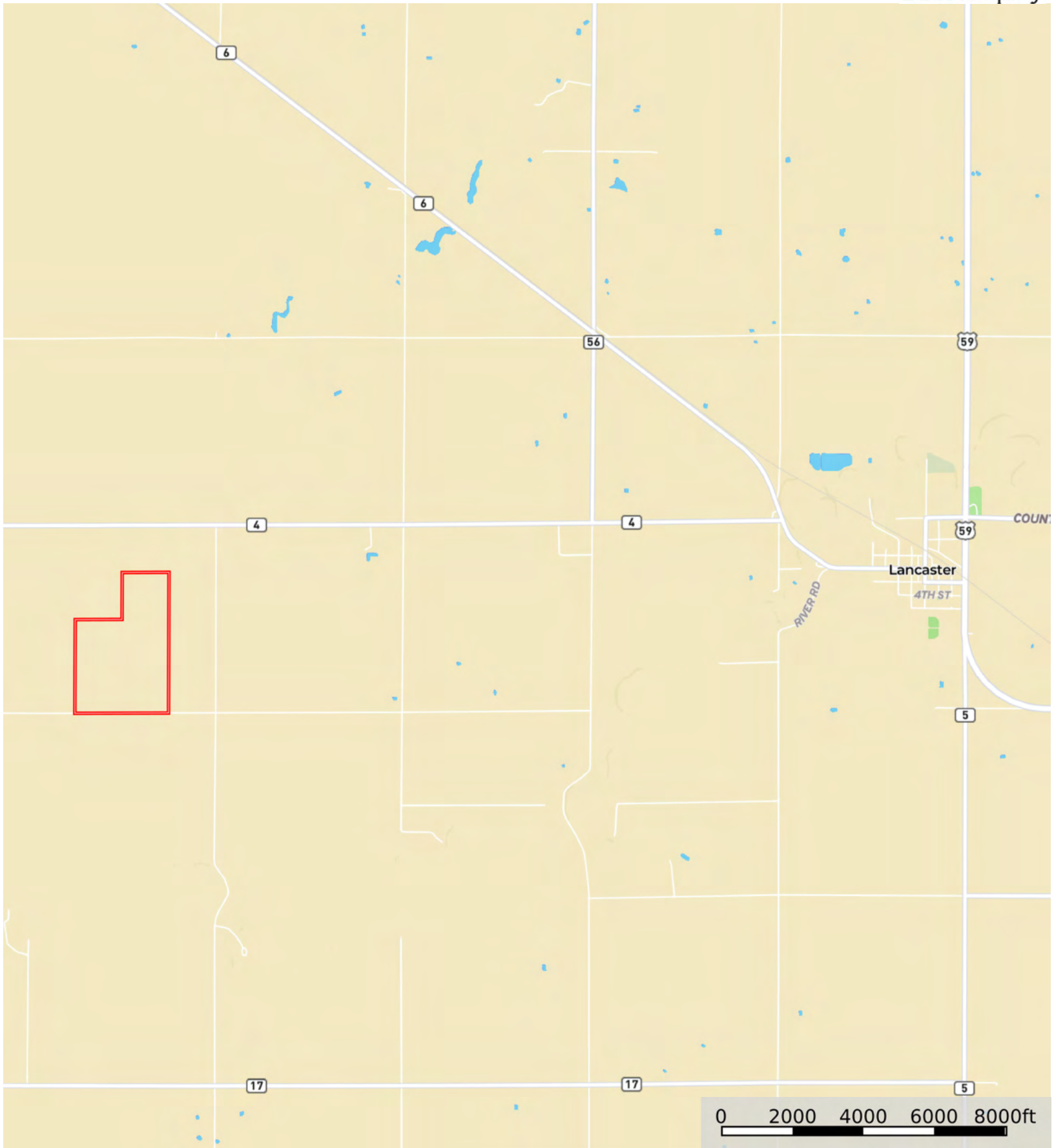


Reed Stenmark

Kittson County, Minnesota, 195 AC +/-



Boundary



Boundary



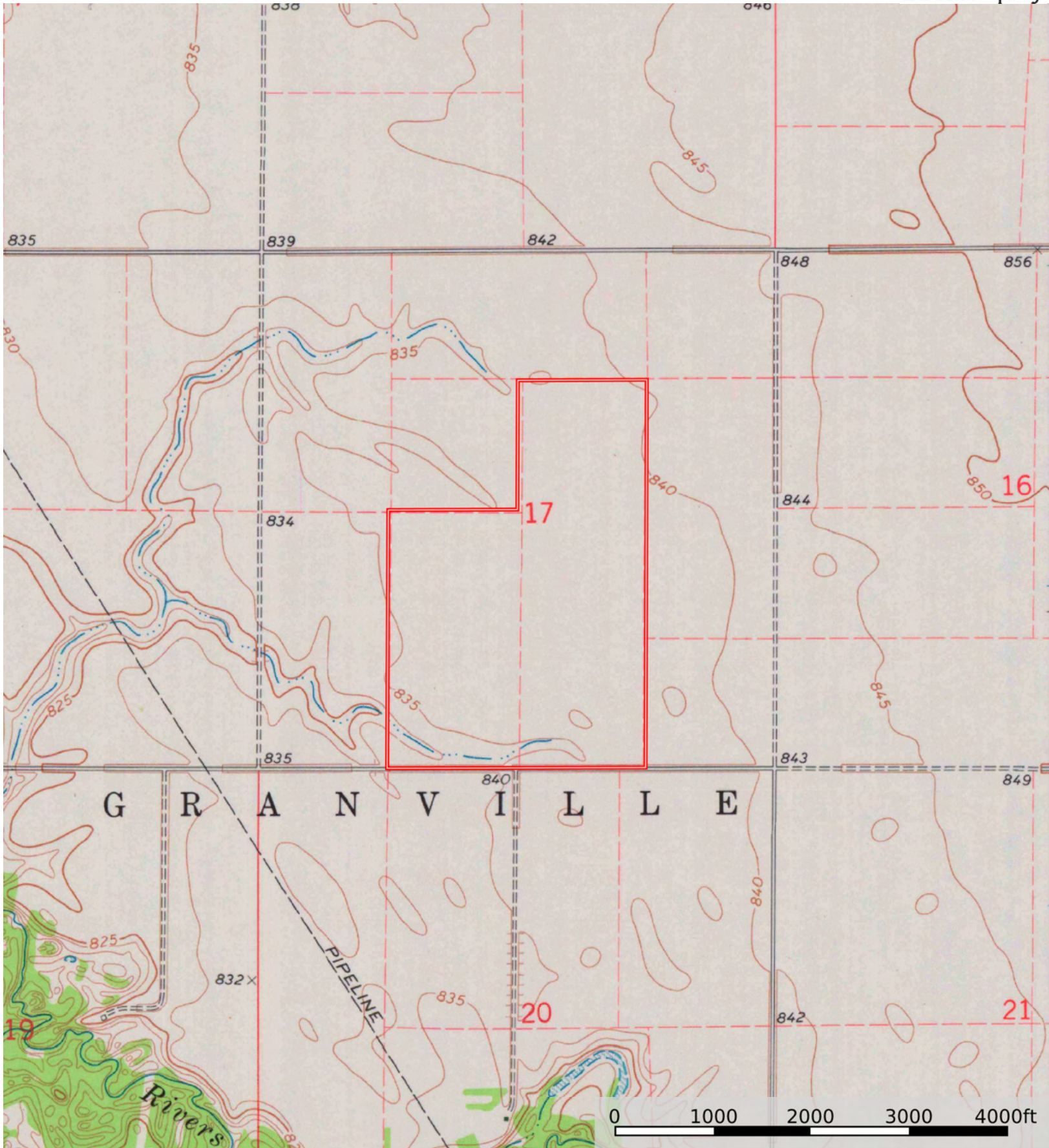
Boundary

| Boundary 200.37 ac

SOIL CODE	SOIL DESCRIPTION	ACRES	%	CPI	NCCPI	CAP
1133A	Northcote clay, 0 to 1 percent slopes	200.37	100	75	53	2w
TOTALS		200.37(*)	100%	75.0	53.0	2

(*) Total acres may differ in the second decimal compared to the sum of each acreage soil. This is due to a round error because we only show the acres of each soil with two decimal.





Boundary