



TRG Tract Report: THIESSEN

Scott Hillard; American Forest Management

28 April, 2025

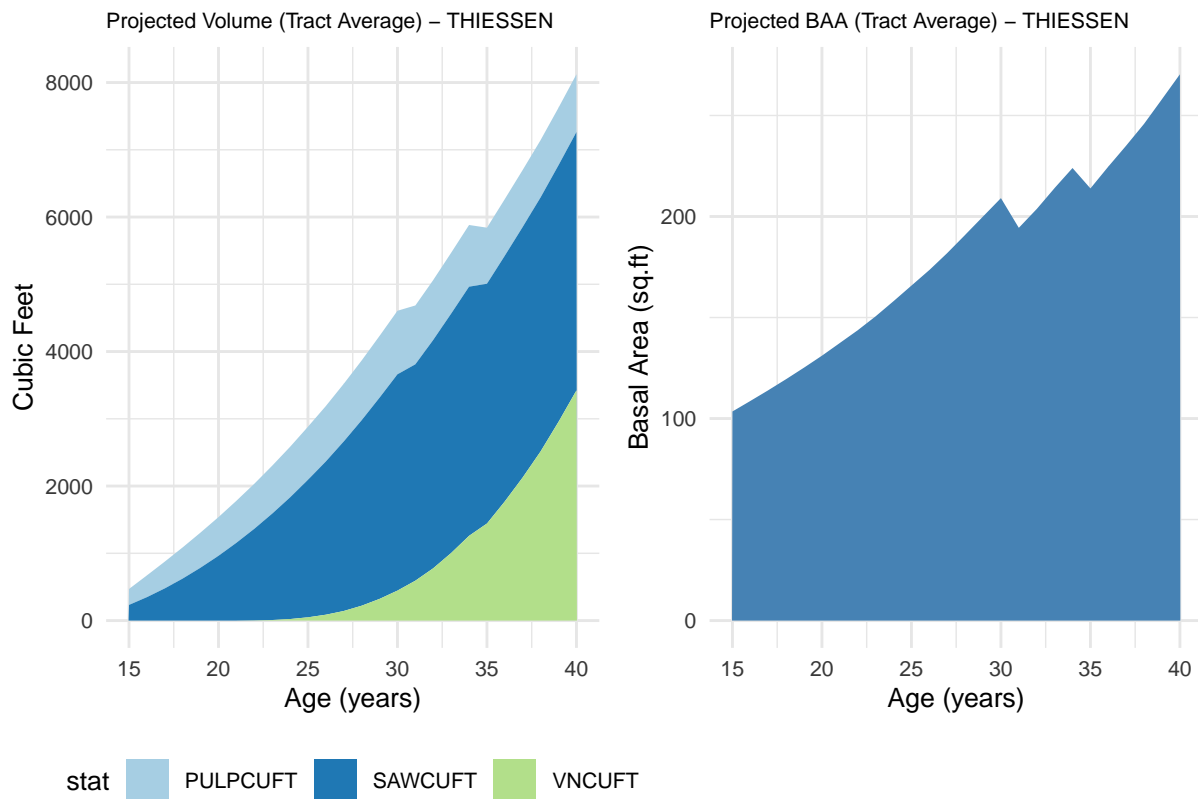
- All volume information (VNCUFT,PULPCUFT,SAWCUFT) represent projections based on inventory. These are for informational purposes. Actual volumes may vary from projections, likewise AFM cannot guarantee projections. Projections include silvicultural treatments, such as thinning. There are four stands Tank-9, Goode-4, Hansen-3, and Preuss-6 which were experimental plantings of white oak, or oak and walnut mixed. These were excluded from the analysis within those tracts. Overall they represent a total of approximately 42 acres.

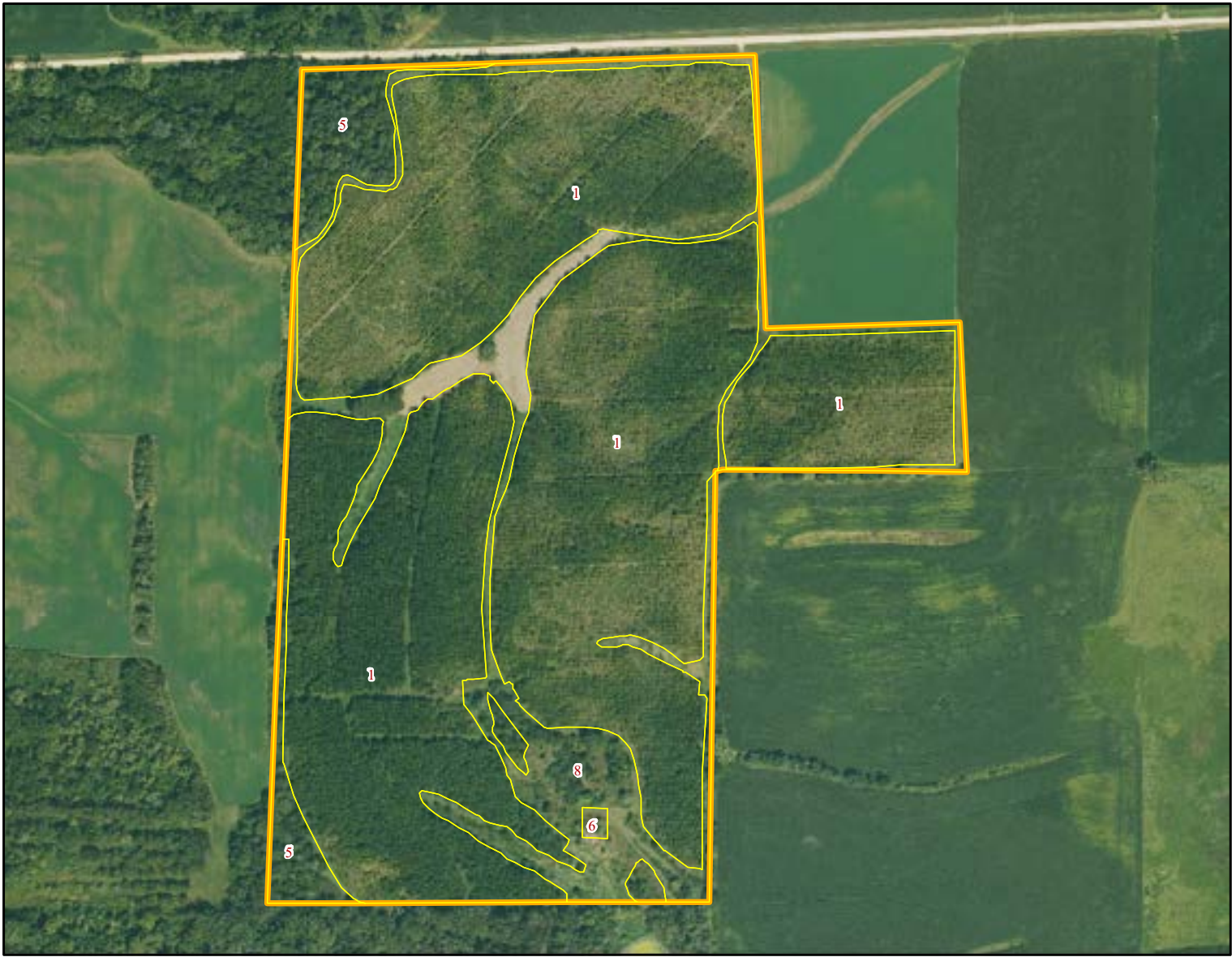
Table 1: Est. Current Stand Inventory for (Productive Area-Walnut Stands Only); THIESSEN

Stand	GIS.Area	Current_Age	DBH	BAPA	TPA	TH	SAWCUFT	PULPCUFT
1	70.63	13	4.9	42.4	295	37.0	232.3	237.1
5	4.46	13	4.2	47.9	467	31.8	0.0	0.0

Table 2: Weighted Tract Average (Productive Area-Walnut Stands Only)

GIS_Area_Productive	GIS_Area_Total	Avg_DBH	Avg_BA	Avg_TPA	Avg_HT	Avg_SAWCUFT	Avg_PULPCUFT
75.1	87.2	4.9	42.7	304.9	36.7	218.5	223





Tract Name	Stand	State	County	Acres	Origin	Dom Species	Year Est
THIESSEN	TRGBW025-301-1	Iowa	Clinton	70.63	Planted	Walnut	2011
THIESSEN	TRGBW025-301-5	Iowa	Clinton	4.46	Natural	Hardwood	0
THIESSEN	TRGBW025-301-6	Iowa	Clinton	0.16	Open	Undefined	0
THIESSEN	TRGBW025-301-8	Iowa	Clinton	11.99	Open	Undefined	0
				87.24			

THIESSEN



1 inch = 474 feet

1/27/2025 mgm

