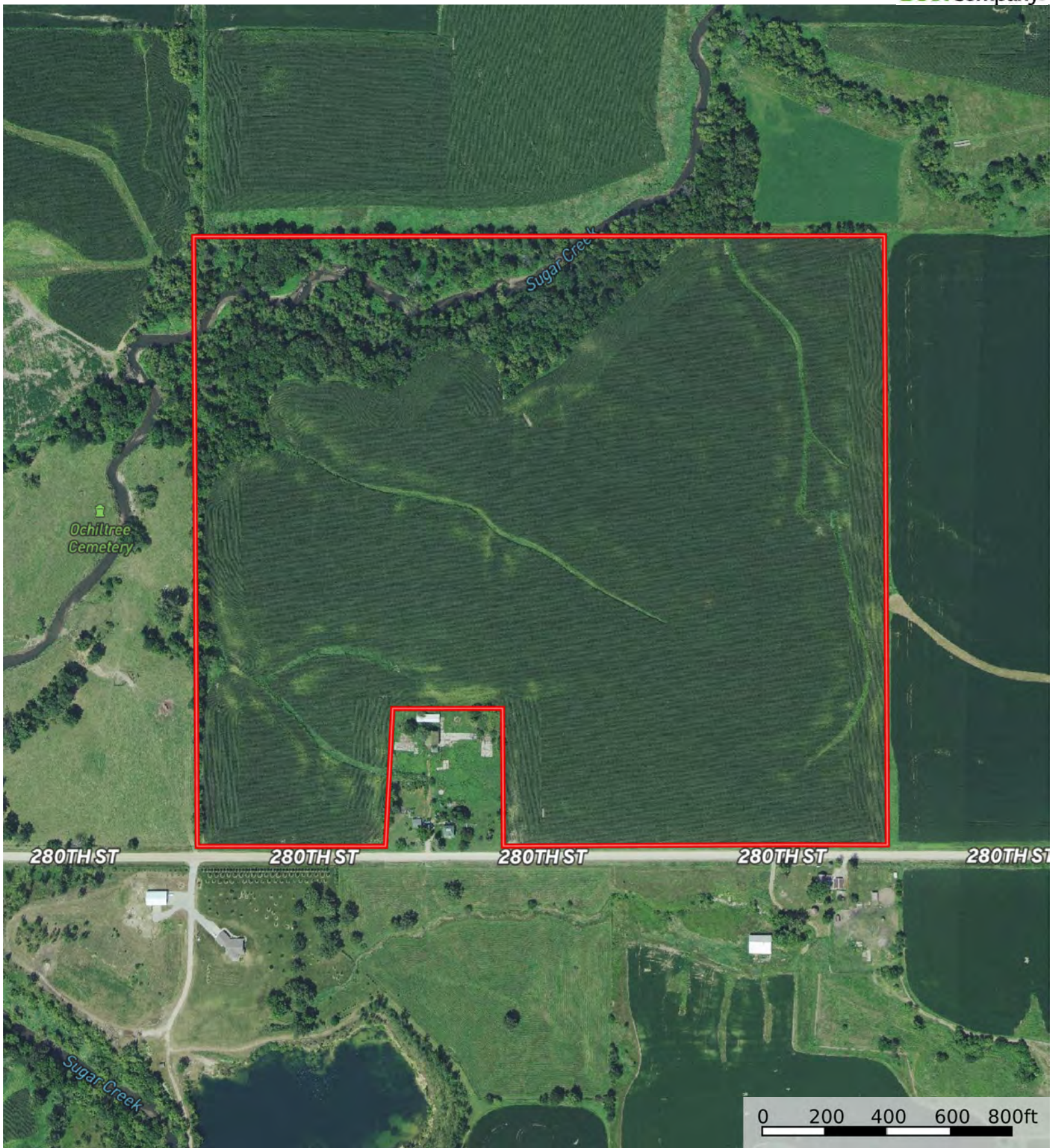

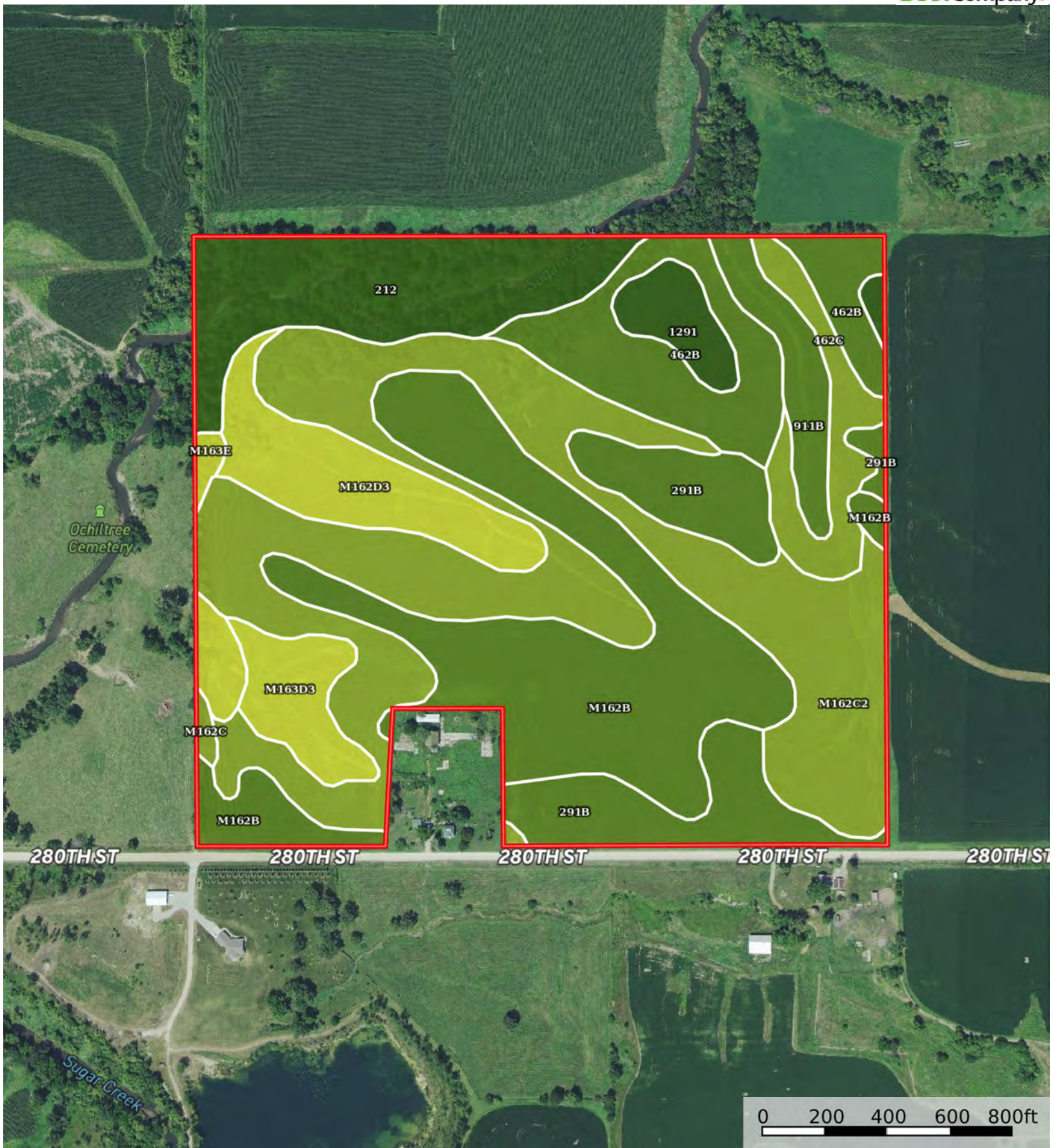



 Boundary



 Boundary



 Boundary

|  Boundary 95.55 ac

SOIL CODE	SOIL DESCRIPTION	ACRES	%	CSR2	CPI	NCCPI	CAP
M162C2	Downs silt loam, till plain, 5 to 9 percent slopes, eroded	29.0	30.35	82.0	0	86	3e
M162B	Downs silt loam, till plain, 2 to 5 percent slopes	19.82	20.74	90.0	0	93	2e
212	Kennebec silt loam, 0 to 2 percent slopes, occasionally flooded	9.9	10.36	92.0	0	94	1
291B	Atterberry silt loam, 2 to 5 percent slopes	8.88	9.29	85.0	0	97	2e
462B	Downs silt loam, terrace, 2 to 5 percent slopes	8.26	8.64	90.0	0	97	2e
M162D3	Downs silty clay loam, till plain, 9 to 14 percent slopes, severely eroded	5.99	6.27	50.0	0	76	4e
462C	Downs silt loam, terrace, 5 to 9 percent slopes	3.68	3.85	81.0	0	97	3e
M163D3	Fayette silty clay loam, till plain, 9 to 14 percent slopes, severely eroded	3.12	3.26	41.0	0	75	4e
911B	Colo-Ely complex, 0 to 5 percent slopes	2.85	2.98	86.0	0	92	2w
1291	Atterberry silt loam, terrace, 0 to 2 percent slopes	2.08	2.18	90.0	0	98	1
M163E	Fayette silt loam, till plain, 14 to 18 percent slopes	1.43	1.5	39.0	0	80	4e
291	Atterberry silt loam, 0 to 2 percent slopes	0.28	0.29	90.0	0	98	1
M162C	Downs silt loam, till plain, 5 to 9 percent slopes	0.26	0.27	85.0	0	92	3e
TOTALS		95.55(*)	100%	81.96	-	90.08	2.44









(*) Total acres may differ in the second decimal compared to the sum of each acreage soil. This is due to a round error because we only show the acres of each soil with two decimal.

Capability Legend

Increased Limitations and Hazards

Decreased Adaptability and Freedom of Choice Users

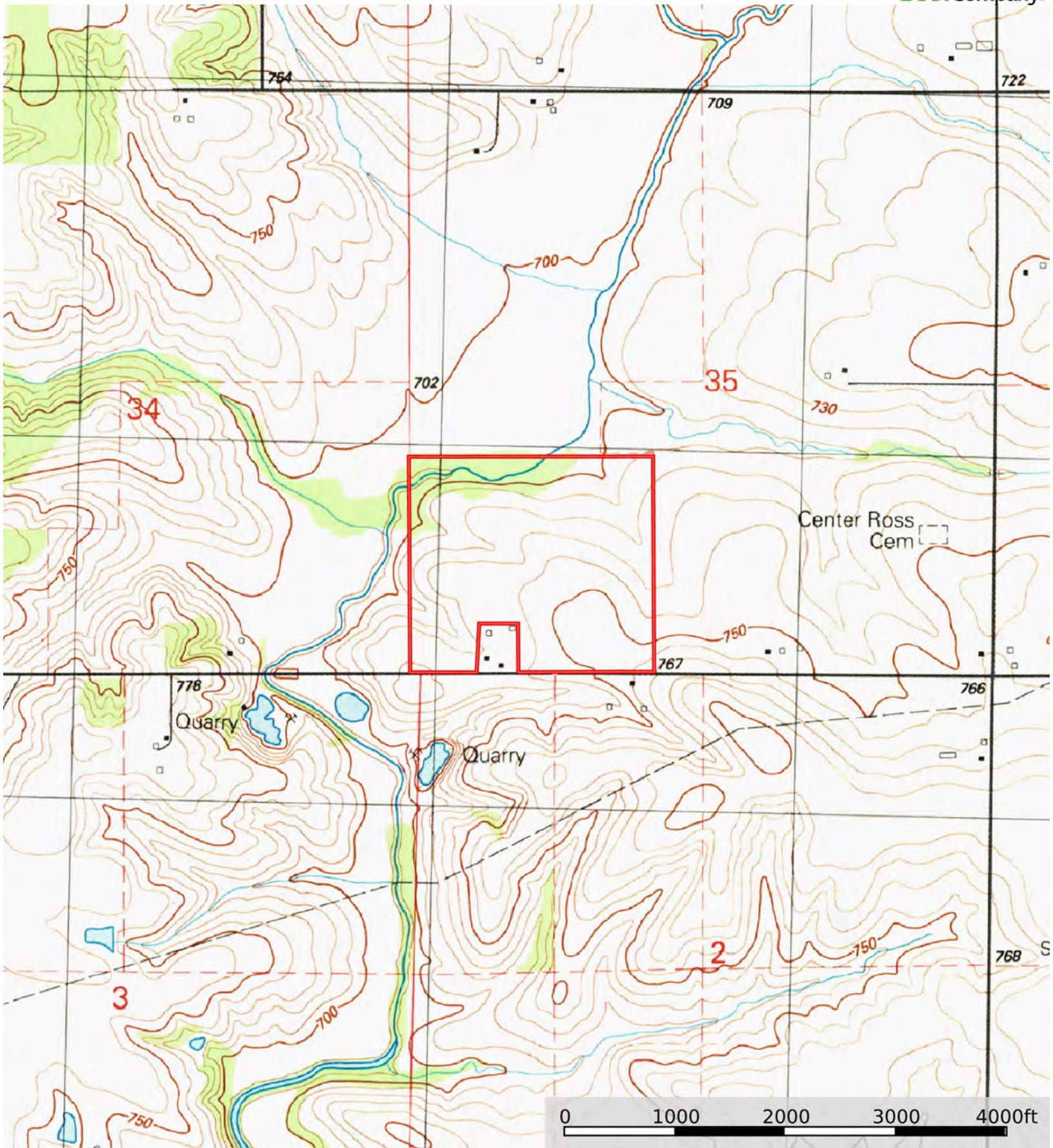
Land, Capability

								
	1	2	3	4	5	6	7	8
'Wild Life'	•	•	•	•	•	•	•	•
Forestry	•	•	•	•	•	•	•	
Limited	•	•	•	•	•	•	•	
Moderate	•	•	•	•	•	•		
Intense	•	•	•	•	•			
Limited	•	•	•	•				
Moderate	•	•	•					
Intense	•	•						
Very Intense	•							

Grazing Cultivation

(c) climatic limitations (e) susceptibility to erosion

(s) soil limitations within the rooting zone (w) excess of water



 Boundary