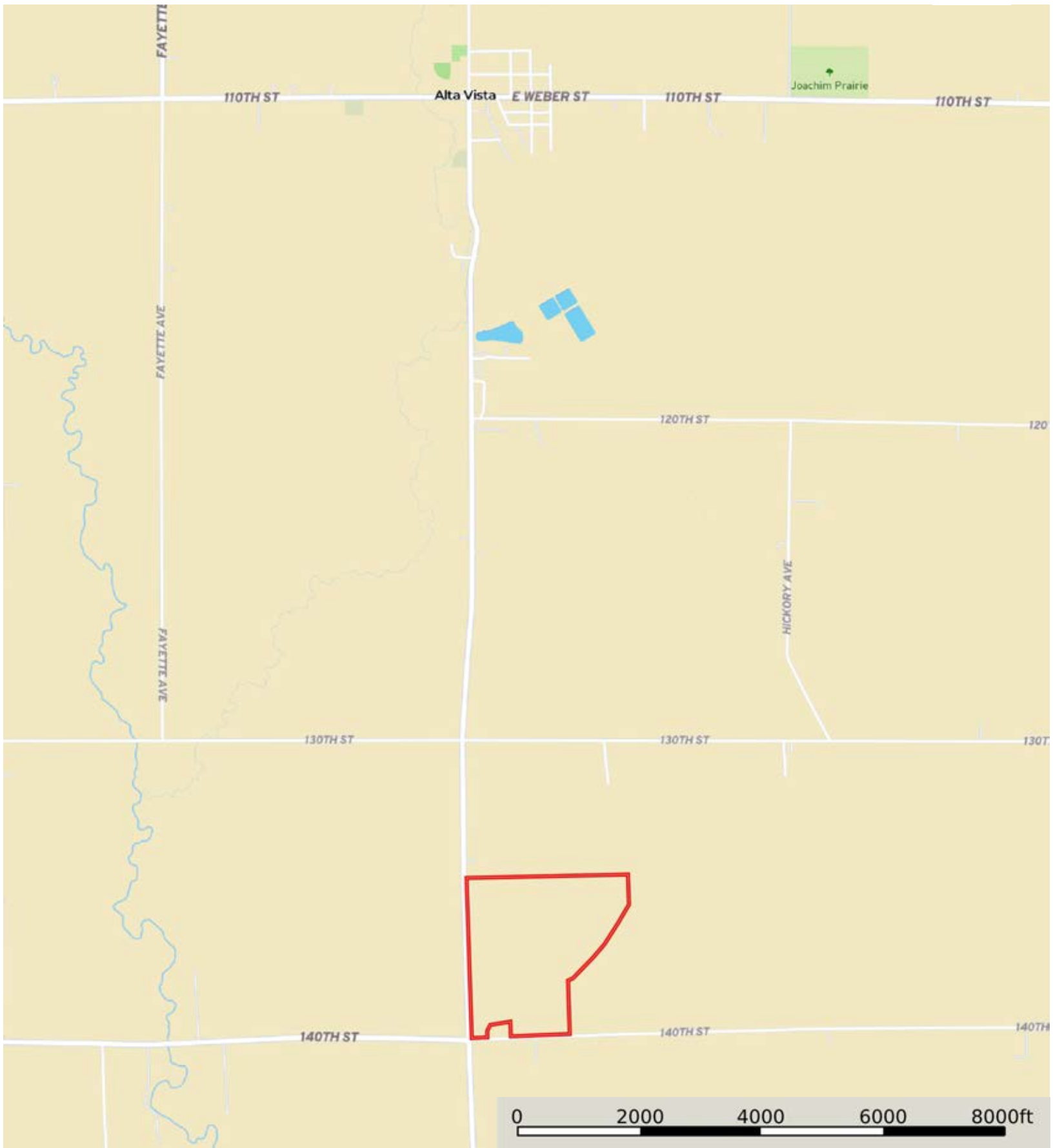


Tolliver, Galen

Chickasaw County, Iowa, 128.41 AC +/-

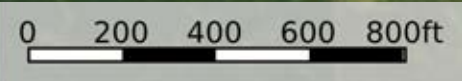


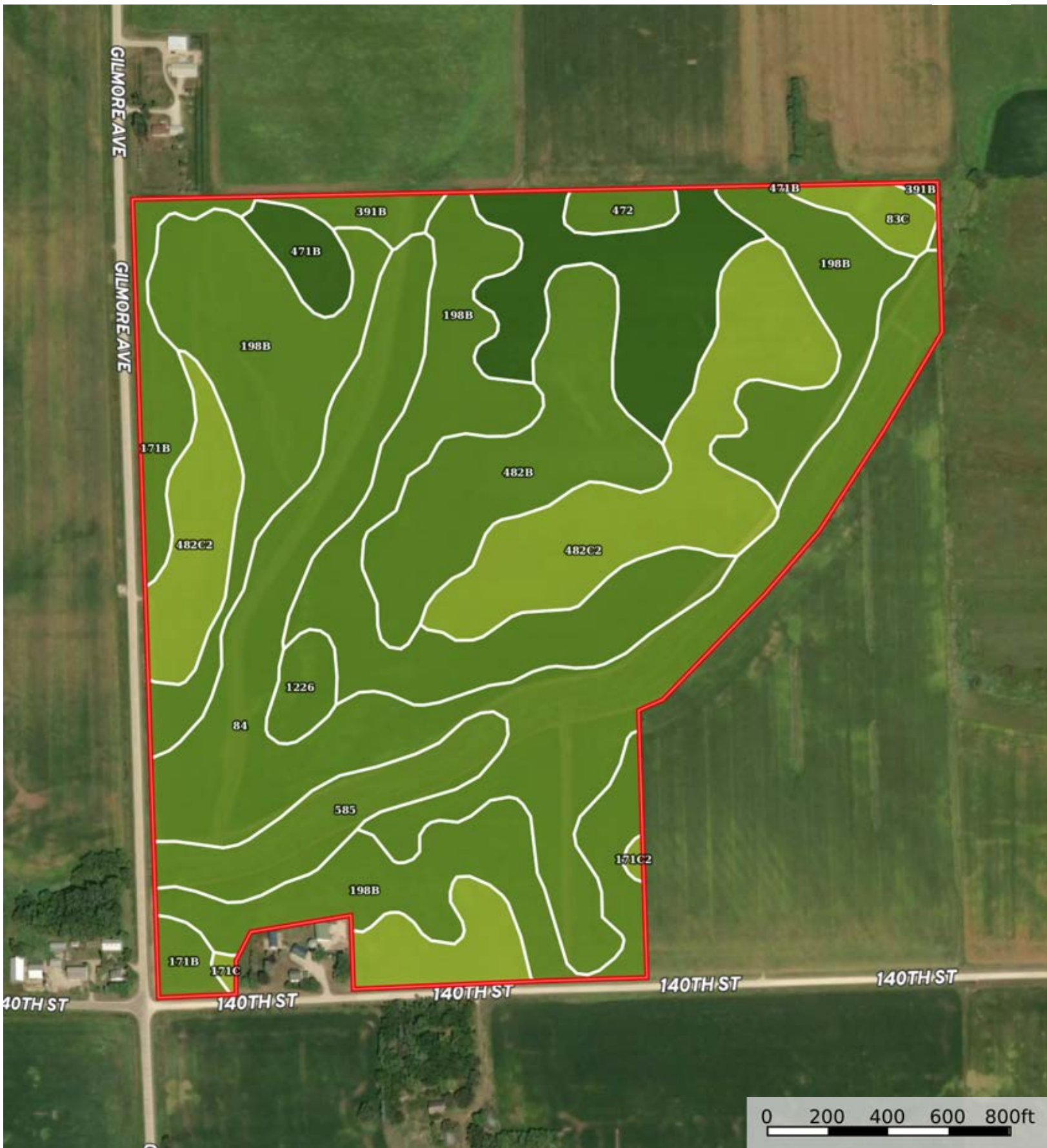
 Boundary

Tolliver, Galen
Chickasaw County, Iowa, 128.41 AC +/-



 Boundary





 Boundary

|  Boundary 124.34 ac

| SOIL CODE | SOIL DESCRIPTION | ACRES | % | CSR2 | CPI | NCCPI | CAP |
|-----------|--|-----------|-------|-------|-----|-------|------|
| 198B | Floyd loam, 1 to 4 percent slopes | 40.73 | 32.75 | 89.0 | 0 | 88 | 2w |
| 84 | Clyde clay loam, 0 to 3 percent slopes | 28.07 | 22.57 | 88.0 | 0 | 91 | 2w |
| 482C2 | Racine loam, 5 to 9 percent slopes, moderately eroded | 16.41 | 13.2 | 76.0 | 0 | 88 | 3e |
| 471B | Oran loam, 2 to 5 percent slopes | 10.58 | 8.51 | 74.0 | 0 | 77 | 1 |
| 482B | Racine loam, 2 to 5 percent slopes | 10.12 | 8.14 | 76.0 | 0 | 63 | 2e |
| 585 | Coland-Spillville complex, 0 to 2 percent slopes, occasionally flooded | 5.04 | 4.05 | 70.0 | 0 | 77 | 2w |
| 171B | Bassett loam, 2 to 5 percent slopes | 4.39 | 3.53 | 85.0 | 0 | 86 | 2e |
| 171C | Bassett loam, 5 to 9 percent slopes | 3.27 | 2.63 | 80.0 | 0 | 85 | 3e |
| 83C | Kenyon loam, 5 to 9 percent slopes | 1.49 | 1.2 | 85.0 | 0 | 86 | 3e |
| 391B | Clyde-Floyd complex, 1 to 4 percent slopes | 1.49 | 1.2 | 87.0 | 0 | 89 | 2w |
| 1226 | Lawler loam, 0 to 2 percent slopes, rarely flooded | 1.45 | 1.17 | 59.0 | 0 | 87 | 2s |
| 472 | Havana loam, 0 to 2 percent slopes | 1.13 | 0.91 | 76.0 | 0 | 96 | 2w |
| 171C2 | Bassett loam, 5 to 9 percent slopes, eroded | 0.17 | 0.14 | 77.0 | 0 | 80 | 3e |
| TOTALS | | 124.34(*) | 100% | 83.01 | - | 85.14 | 2.09 |









(*) Total acres may differ in the second decimal compared to the sum of each acreage soil. This is due to a round error because we only show the acres of each soil with two decimal.

Capability Legend

Increased Limitations and Hazards

Decreased Adaptability and Freedom of Choice Users

Land, Capability

| |  |  |  |  |  |  |  |  |
|--------------|---|---|---|---|--|---|---|---|
| | 1 | 2 | 3 | 4 | 5 | 6 | 7 | 8 |
| 'Wild Life' | • | • | • | • | • | • | • | • |
| Forestry | • | • | • | • | • | • | • | |
| Limited | • | • | • | • | • | • | • | |
| Moderate | • | • | • | • | • | • | | |
| Intense | • | • | • | • | • | | | |
| Limited | • | • | • | • | | | | |
| Moderate | • | • | • | | | | | |
| Intense | • | • | | | | | | |
| Very Intense | • | | | | | | | |

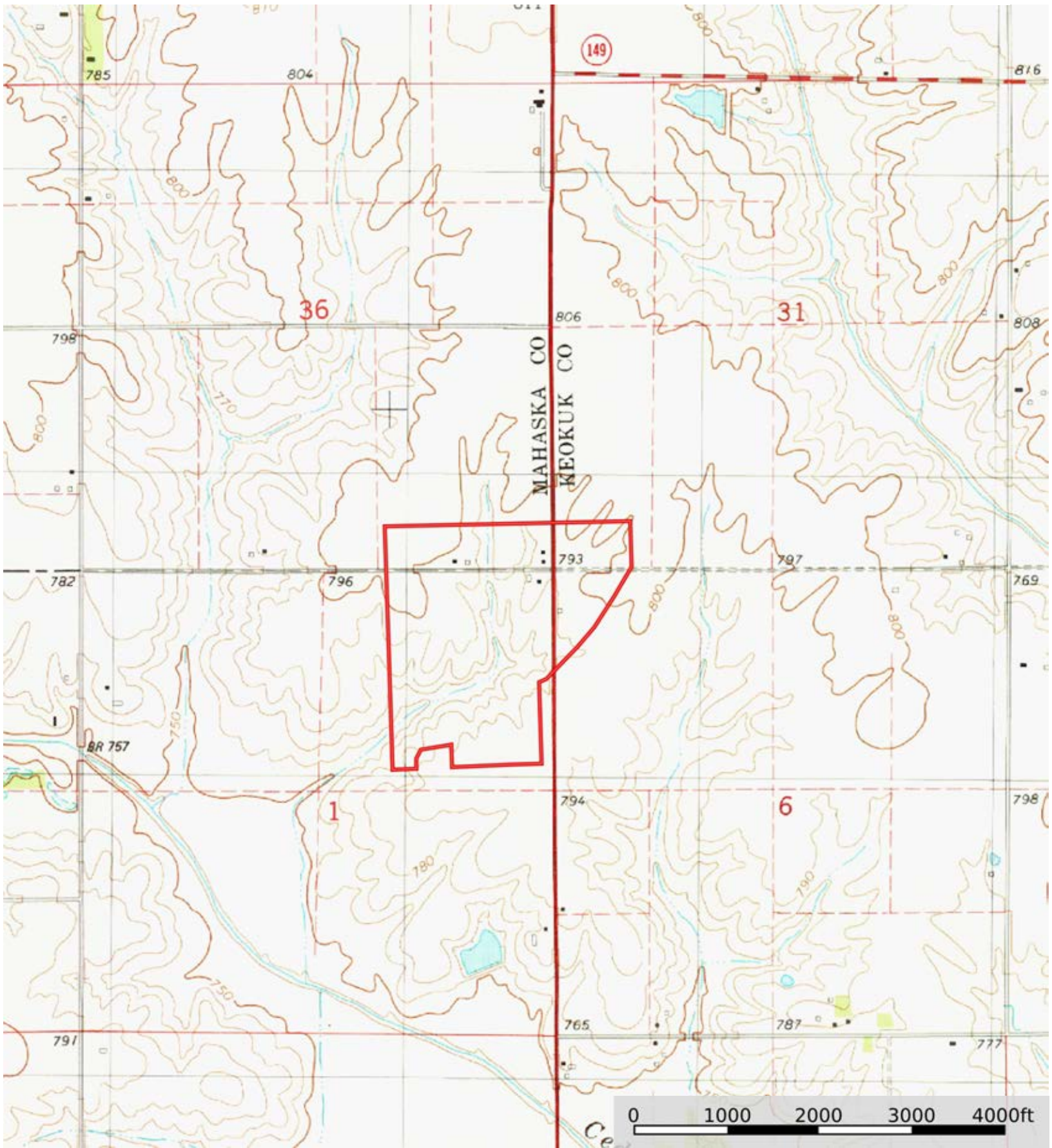
Grazing Cultivation

(c) climatic limitations (e) susceptibility to erosion

(s) soil limitations within the rooting zone (w) excess of water

Tolliver, Galen

Chickasaw County, Iowa, 128.41 AC +/-



 Boundary