

31503
Richard M. Bend Marital Trust
DeKalb county, Illinois

Latitude: 41.7212°N
Longitude: 88.8915°W
Imagery Source: USDA NAIP
Soil Data Source: USDA NRCS
Boundaries are Approximate



31503
Richard M. Bend Marital Trust
DeKalb county, Illinois

Latitude: 41.7212°N
Longitude: 88.8915°W
Imagery Source: USDA NAIP
Soil Data Source: USDA NRCS
Boundaries are Approximate

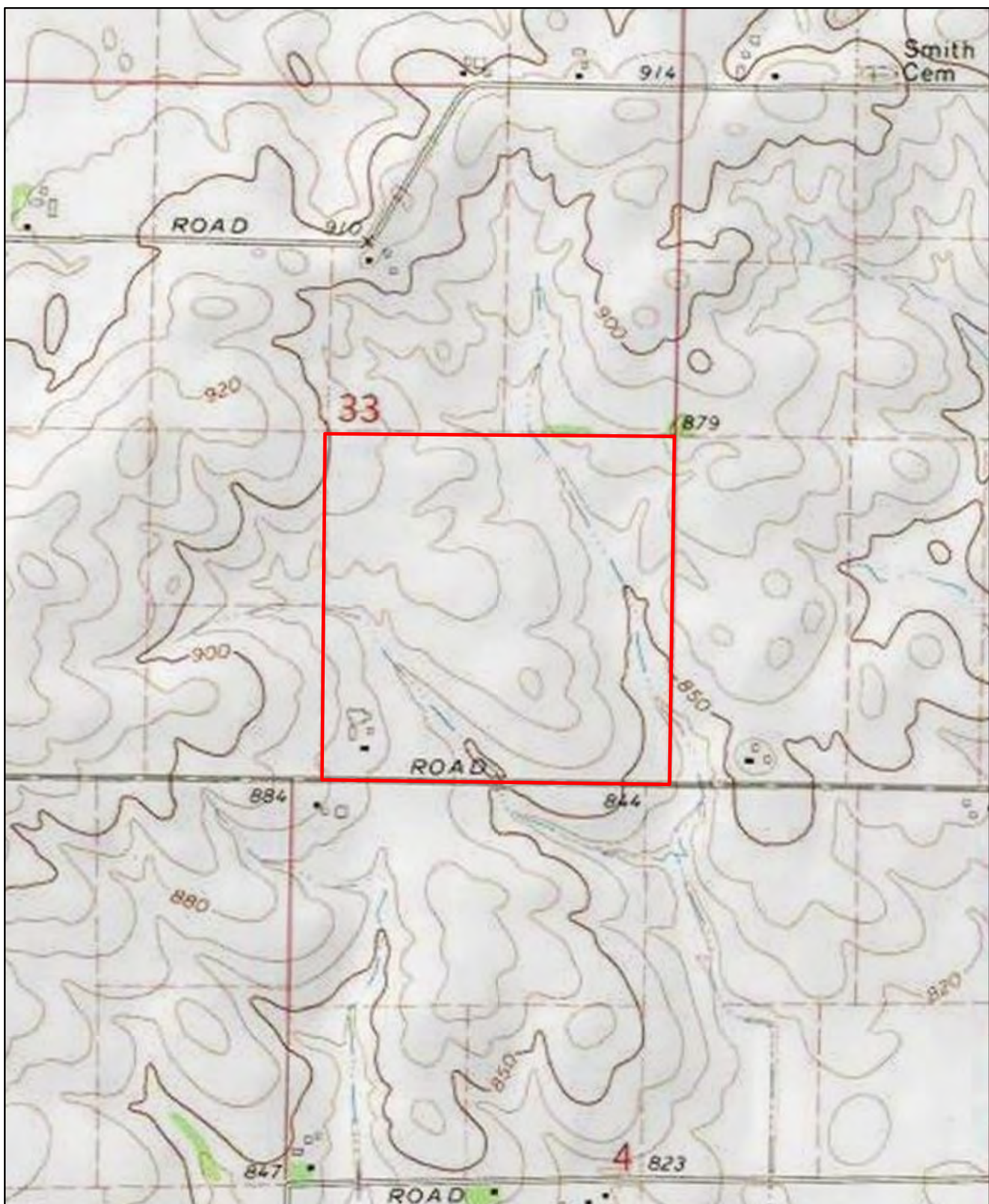


Map Symbol	Name	ACRES
512B	Danabrook silt loam, 2 to 5 percent slopes	74.58
356A	Elpaso silty clay loam, 0 to 2 percent slopes	30.52
171B	Catlin silt loam, 2 to 5 percent slopes	16.35
60C2	La Rose loam, 5 to 10 percent slopes, eroded	18.04
154A	Flanagan silt loam, 0 to 2 percent slopes	17.57
221C2	Parr silt loam, 5 to 10 percent slopes, eroded	1.13
221B2	Parr silt loam, 2 to 5 percent slopes, eroded	1.21
TOTAL		159.4



31503
 Richard M. Bend Marital Trust
 Dekalb county, Illinois

Latitude: 41.7212°N
 Longitude: 88.8915°W
 Imagery Source: USDA NAIP
 Soil Data Source: USDA NRCS
 Boundaries are Approximate



31503
Richard M. Bend Marital Trust
DeKalb county, Illinois

Latitude: 41.7212°N
Longitude: 88.8915°W
Imagery Source: USDA NAIP
Soil Data Source: USDA NRCS
Boundaries are Approximate