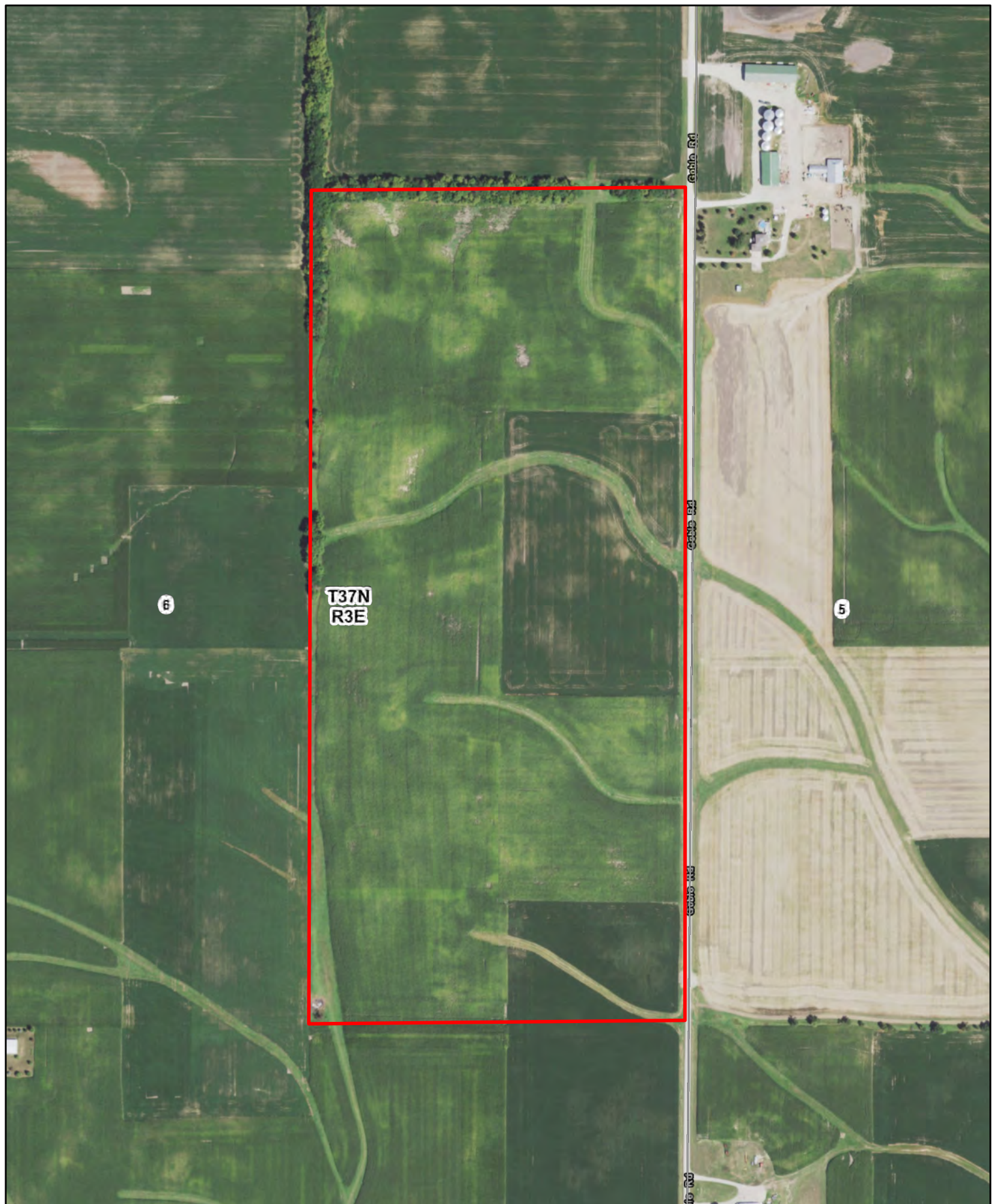


31504
 Richards M. Bend Residuary Trust
 Dekalb county, Illinois

Latitude: 41.709°N
 Longitude: 88.9191°W
 Imagery Source: USDA NAIP
 Soil Data Source: USDA NRCS
 Boundaries are Approximate



T37N
R3E

6

5

Rte 130

Rte 130

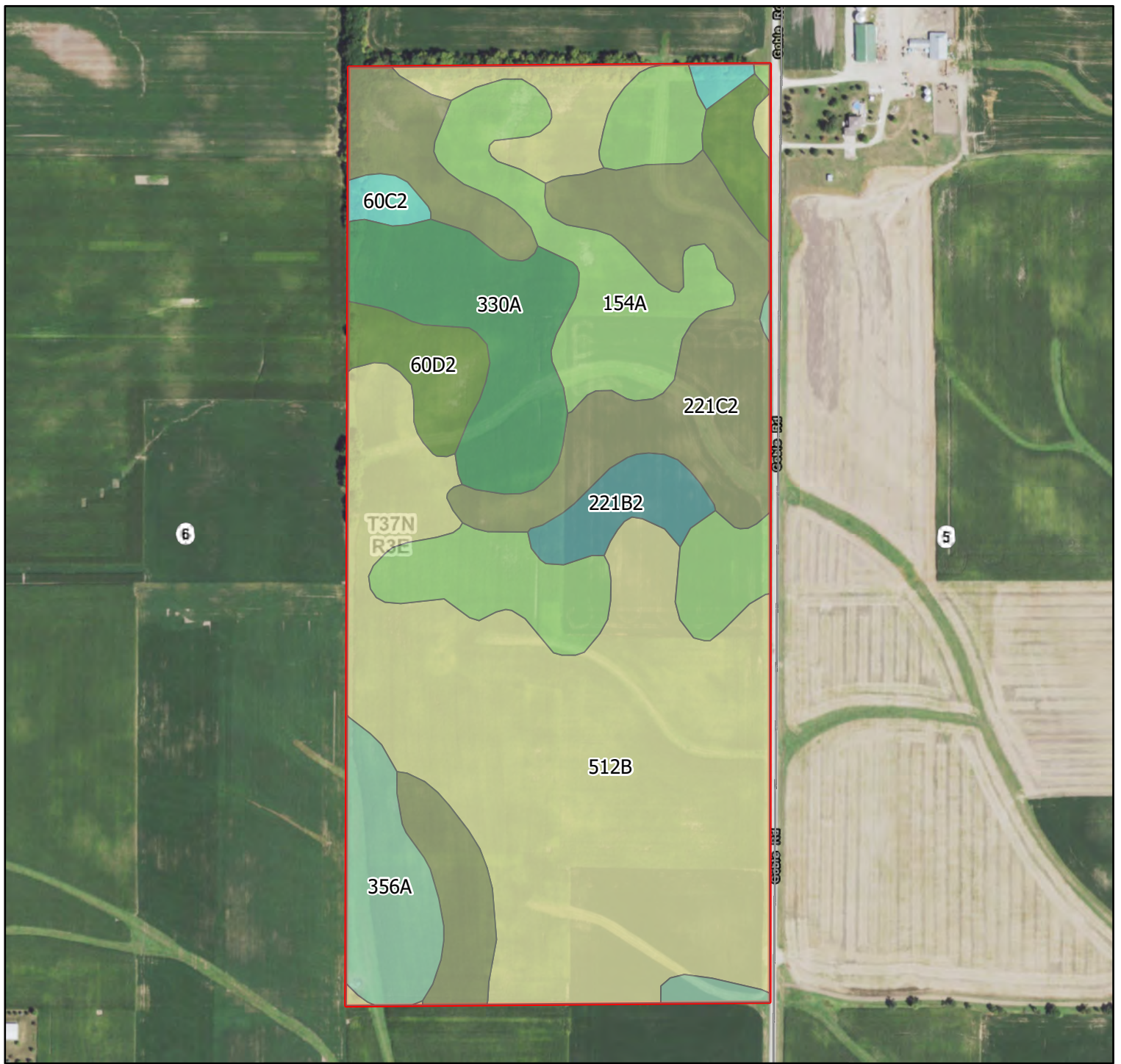
Rte 130

Rte 130



31504
Richards M. Bend Residuary Trust
DeKalb county, Illinois

Latitude: 41.709°N
Longitude: 88.9191°W
Imagery Source: USDA NAIP
Soil Data Source: USDA NRCS
Boundaries are Approximate

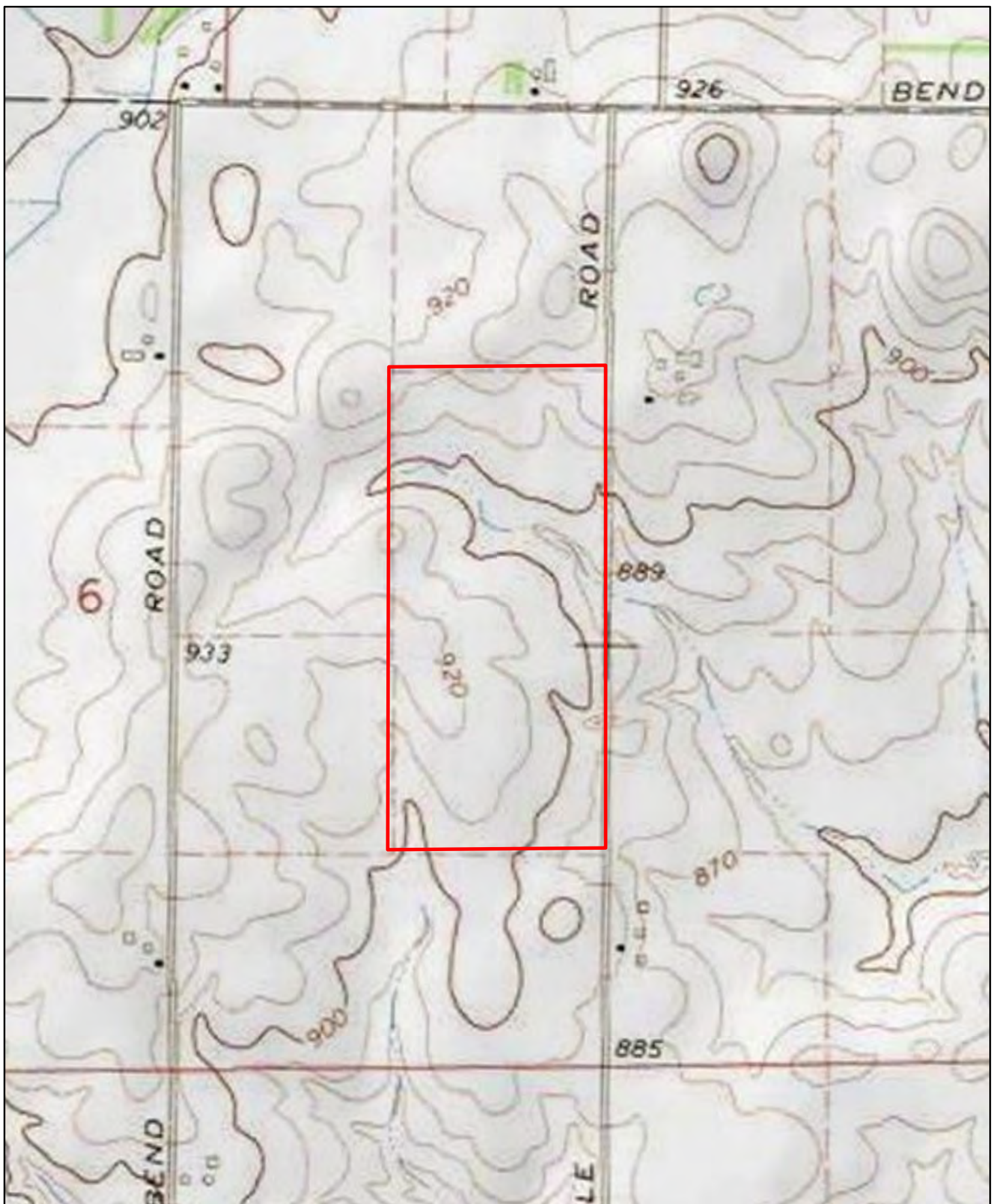


Map Symbol	Name	ACRES
512B	Danabrook silt loam, 2 to 5 percent slopes	36.82
154A	Flanagan silt loam, 0 to 2 percent slopes	14.81
221C2	Parr silt loam, 5 to 10 percent slopes, eroded	16.91
356A	Elpaso silty clay loam, 0 to 2 percent slopes	4.95
60C2	La Rose loam, 5 to 10 percent slopes, eroded	1.15
330A	Peotone silty clay loam, 0 to 2 percent slopes	7.38
60D2	La Rose loam, 10 to 18 percent slopes, eroded	4.07
221B2	Parr silt loam, 2 to 5 percent slopes, eroded	2.41
TOTAL		88.51



31504
 Richards M. Bend Residuary Trust
 Dekalb county, Illinois

Latitude: 41.709°N
 Longitude: 88.9191°W
 Imagery Source: USDA NAIP
 Soil Data Source: USDA NRCS
 Boundaries are Approximate



31504
Richards M. Bend Residuary Trust
DeKalb county, Illinois

Latitude: 41.709°N
Longitude: 88.9191°W
Imagery Source: USDA NAIP
Soil Data Source: USDA NRCS
Boundaries are Approximate