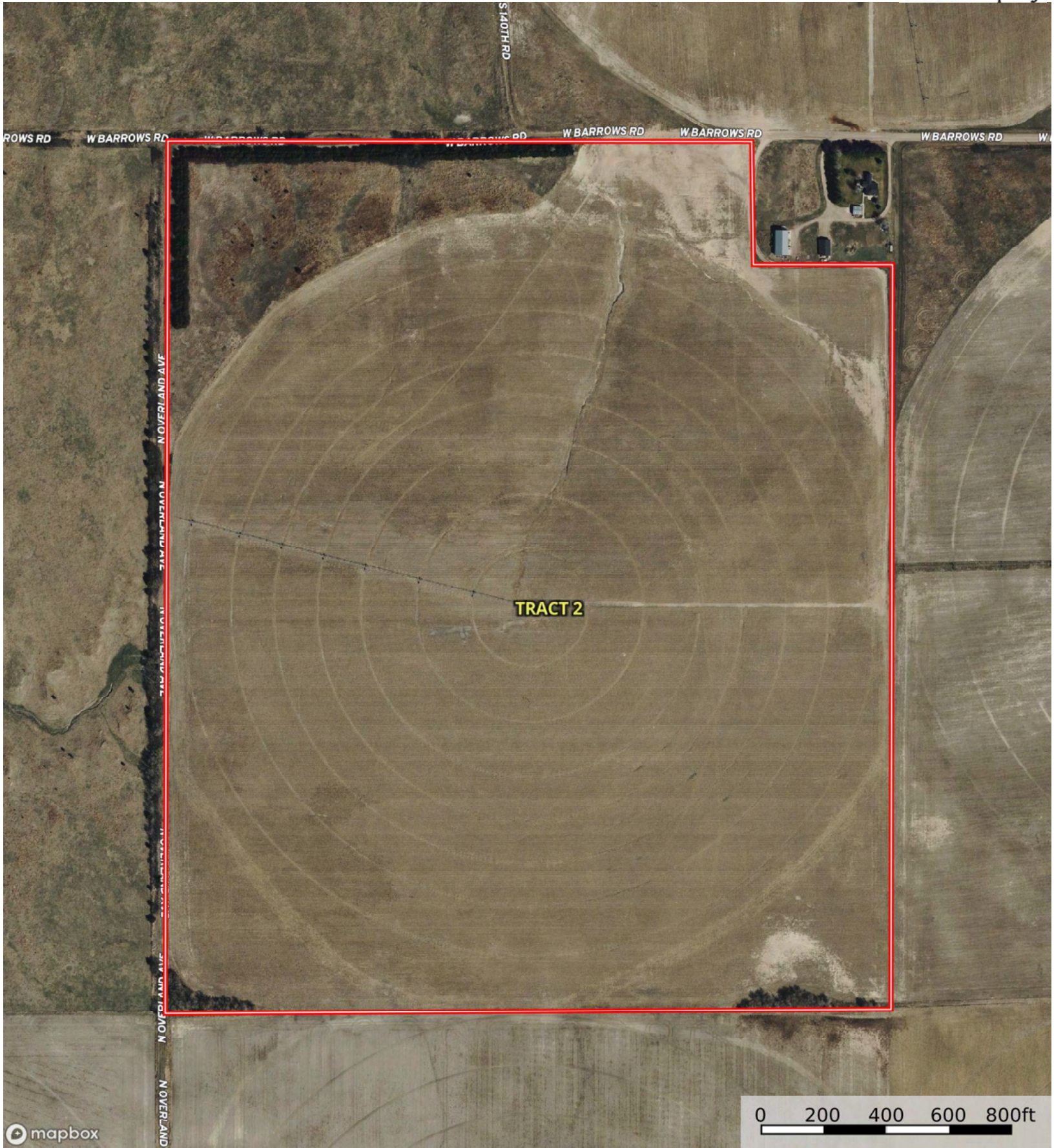


Boundary





Boundary





Boundary

Boundary 144.36 ac

SOIL CODE	SOIL DESCRIPTION	ACRES	%	CPI	NCCPI	CAP
9064	Kenesaw silt loam, 1 to 3 percent slopes	50.62	35.07	0	72	2e
4834	Valentine loamy fine sand, rolling	45.29	31.37	0	30	6e
9063	Kenesaw silt loam, 0 to 1 percent slopes	17.14	11.87	0	73	2c
6571	Thurman-Valentine loamy fine sands, undulating	14.41	9.98	0	38	3e
9066	Kenesaw silt loam, 3 to 6 percent slopes	12.22	8.46	0	71	3e
9027	Gates silt loam, 1 to 3 percent slopes	3.6	2.49	0	61	2e
2533	Coly silt loam, 11 to 30 percent slopes	0.72	0.5	0	59	6e
2596	Hersh fine sandy loam, 3 to 6 percent slopes	0.36	0.25	0	59	3e
TOTALS		144.36(*)	100%	-	55.09	3.46









(\*) Total acres may differ in the second decimal compared to the sum of each acreage soil. This is due to a round error because we only show the acres of each soil with two decimal.

## Capability Legend

Increased Limitations and Hazards

Decreased Adaptability and Freedom of Choice Users

Land, Capability

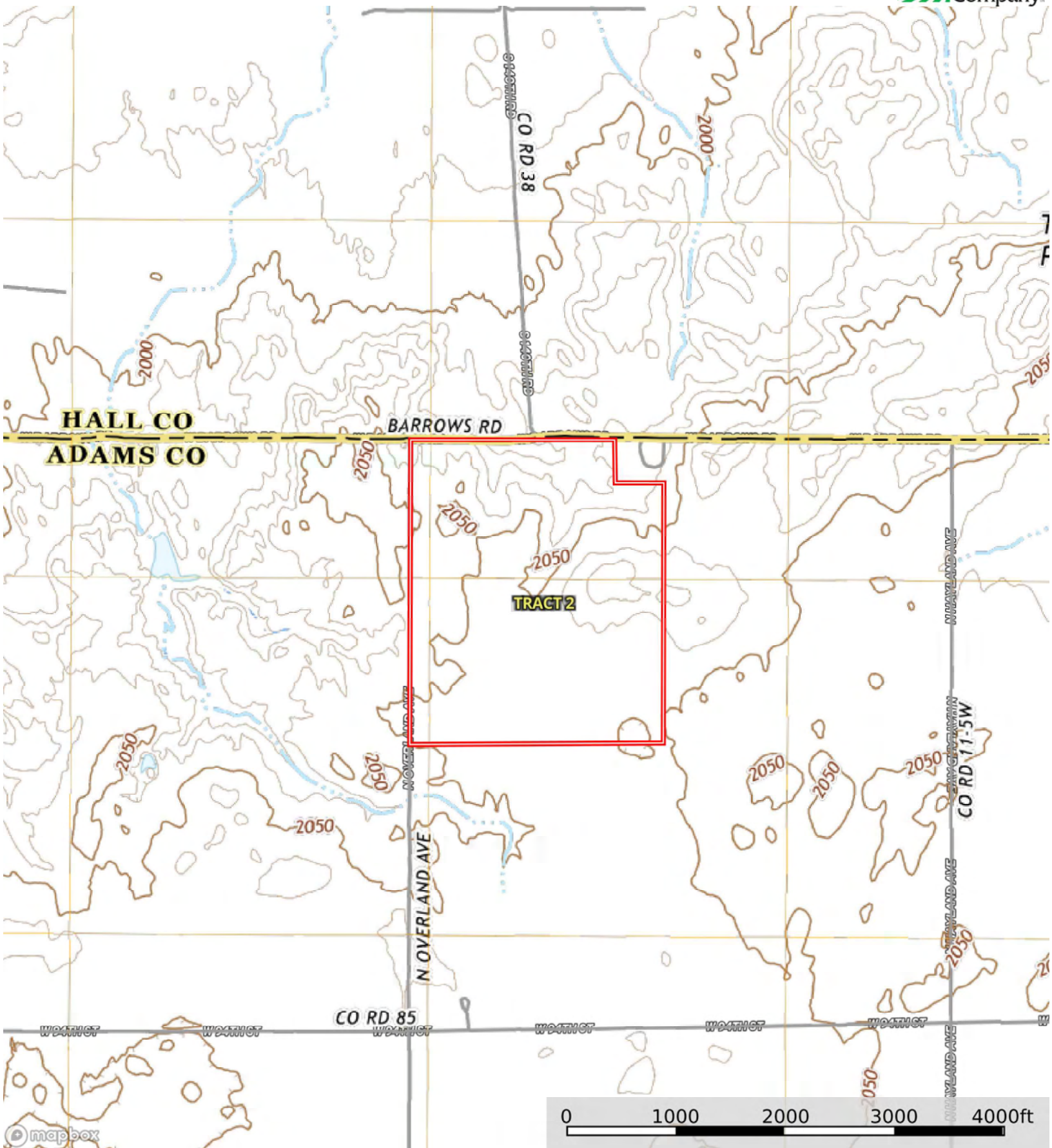
								
	1	2	3	4	5	6	7	8
'Wild Life'	•	•	•	•	•	•	•	•
Forestry	•	•	•	•	•	•	•	
Limited	•	•	•	•	•	•	•	
Moderate	•	•	•	•	•	•		
Intense	•	•	•	•	•			
Limited	•	•	•	•				
Moderate	•	•	•					
Intense	•	•						
Very Intense	•							

## Grazing Cultivation

(c) climatic limitations (e) susceptibility to erosion

(s) soil limitations within the rooting zone (w) excess of water





Boundary