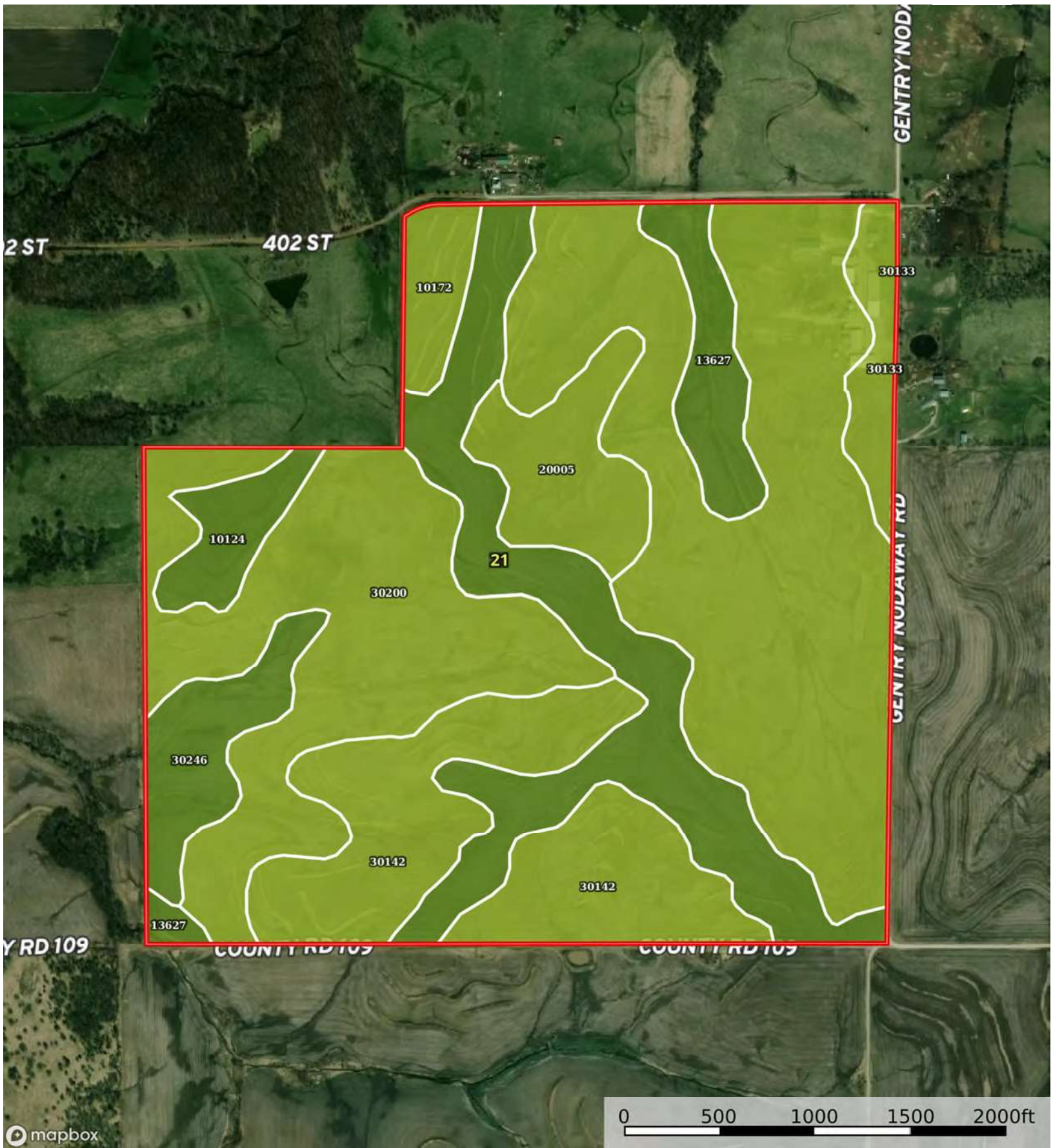
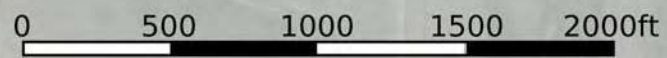


mapbox

Boundary



mapbox



Boundary

|  Boundary 312.59 ac

SOIL CODE	SOIL DESCRIPTION	ACRES	%	CPI	NCCPI	CAP
10172	Shelby clay loam, 9 to 14 percent slopes, moderately eroded	101.24	32.39	0	68	3e
30200	Shelby loam, 9 to 14 percent slopes	60.36	19.31	0	72	3e
10124	Sharpsburg silty clay loam, loess hill, 2 to 5 percent slopes	52.6	16.83	0	80	2e
30142	Lamoni silty clay loam, 5 to 9 percent slopes, moderately eroded	48.31	15.46	0	60	3e
20005	Lamoni clay loam, 5 to 9 percent slopes	16.09	5.15	0	64	3e
30246	Olmitz loam, heavy till, 2 to 5 percent slopes	13.06	4.18	0	92	2e
13627	Colo, frequently flooded-Judson silty clay loams, 0 to 5 percent slopes	12.76	4.08	0	76	2w
30133	Lamoni clay loam, 5 to 9 percent slopes, eroded	8.17	2.61	0	56	3e
TOTALS		312.59(*)	100%	-	70.37	2.75

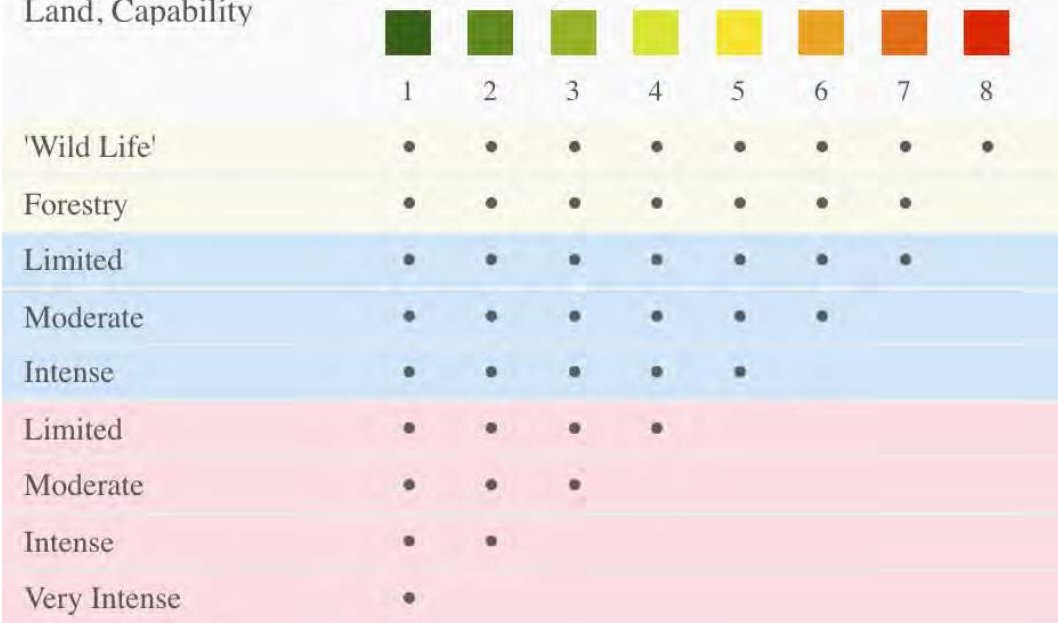
(*) Total acres may differ in the second decimal compared to the sum of each acreage soil. This is due to a round error because we only show the acres of each soil with two decimal.

Capability Legend

Increased Limitations and Hazards

Decreased Adaptability and Freedom of Choice Users

Land, Capability



Grazing Cultivation

(c) climatic limitations (e) susceptibility to erosion

(s) soil limitations within the rooting zone (w) excess of water