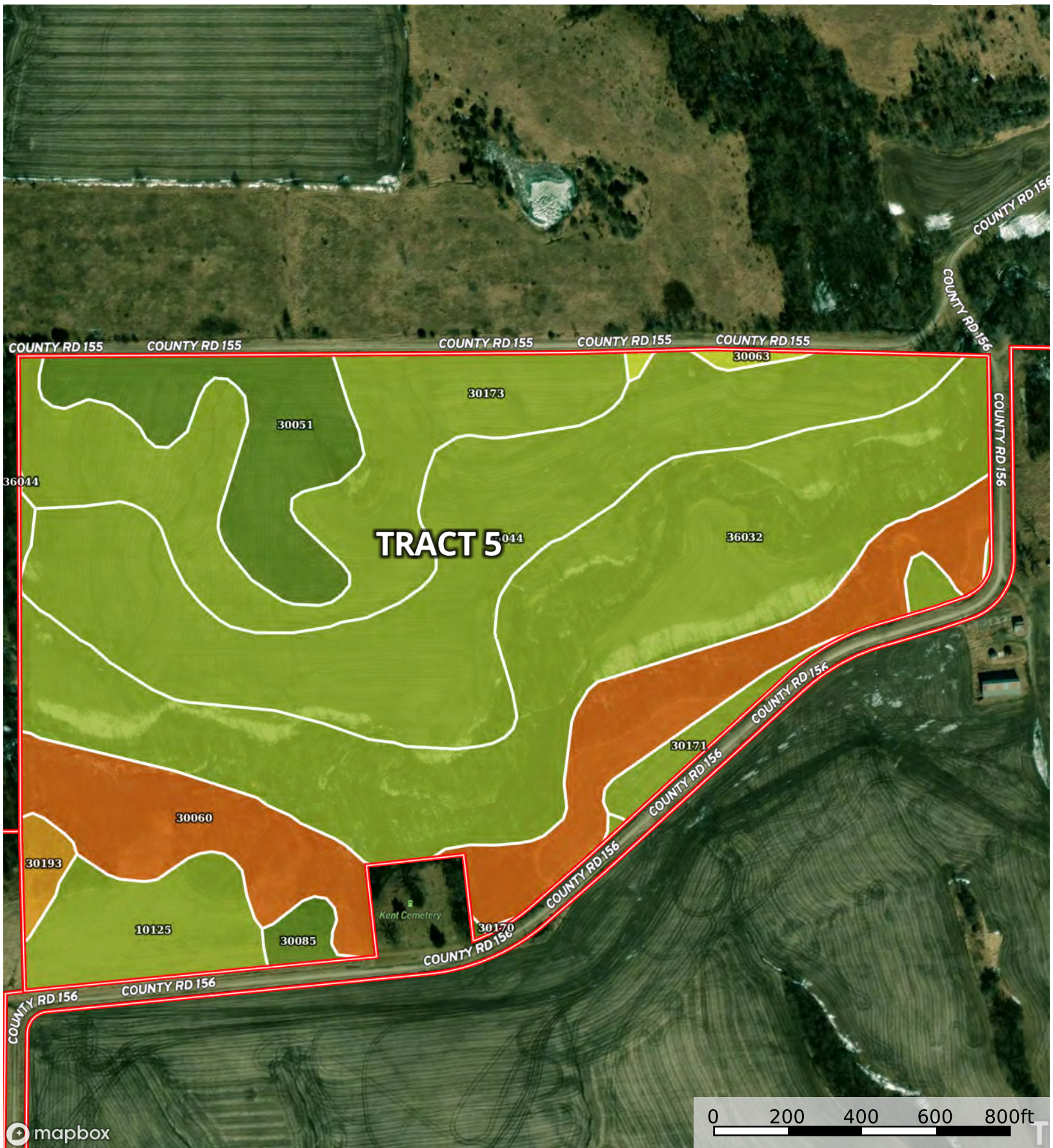


Goodson Missouri tracts

Gentry County, Worth County, Missouri, AC +/-



Boundary

|  Boundary 78.59 ac

| SOIL CODE | SOIL DESCRIPTION | ACRES | % | CPI | NCCPI | CAP |
|-----------|--|--------------|-------|-----|-------|------|
| 36032 | Nodaway silt loam, 0 to 2 percent slopes, overflow, frequently flooded | 22.81 | 29.03 | 0 | 62 | 3w |
| 36044 | Wabash silty clay loam, 0 to 2 percent slopes, occasionally flooded | 18.32 | 23.31 | 0 | 51 | 3w |
| 30060 | Gara loam, 20 to 35 percent slopes | 12.36 | 15.73 | 0 | 18 | 7e |
| 30173 | Pershing silt loam, benches, 5 to 9 percent slopes, eroded | 11.73 | 14.93 | 0 | 83 | 3e |
| 30051 | Edina silt loam, benches, 0 to 3 percent slopes | 5.93 | 7.55 | 0 | 71 | 2w |
| 10125 | Sharpsburg silty clay loam, loess hill, 5 to 9 percent slopes | 4.06 | 5.17 | 0 | 84 | 3e |
| 30171 | Pershing silt loam, terrace, 2 to 5 percent slopes | 1.53 | 1.95 | 0 | 73 | 3e |
| 30085 | Grundy silt loam, 2 to 5 percent slopes | 0.71 | 0.9 | 0 | 74 | 2e |
| 30193 | Shelby and Gara soils, 9 to 20 percent slopes, severely eroded | 0.71 | 0.9 | 0 | 61 | 6e |
| 30063 | Gara loam, 9 to 14 percent slopes, moderately eroded | 0.35 | 0.45 | 0 | 66 | 4e |
| 30170 | Pershing silt loam, 5 to 9 percent slopes, eroded | 0.08 | 0.1 | 0 | 72 | 3e |
| TOTALS | | 78.59(*) | 100% | - | 57.81 | 3.58 |









(*) Total acres may differ in the second decimal compared to the sum of each acreage soil. This is due to a round error because we only show the acres of each soil with two decimal.

Capability Legend

Increased Limitations and Hazards

Decreased Adaptability and Freedom of Choice Users

Land, Capability

| |  |  |  |  |  |  |  |  |
|--------------|---|---|---|---|--|---|---|---|
| | 1 | 2 | 3 | 4 | 5 | 6 | 7 | 8 |
| 'Wild Life' | • | • | • | • | • | • | • | • |
| Forestry | • | • | • | • | • | • | • | |
| Limited | • | • | • | • | • | • | • | |
| Moderate | • | • | • | • | • | • | | |
| Intense | • | • | • | • | • | | | |
| Limited | • | • | • | • | | | | |
| Moderate | • | • | • | | | | | |
| Intense | • | • | | | | | | |
| Very Intense | • | | | | | | | |

Grazing Cultivation

(c) climatic limitations (e) susceptibility to erosion

(s) soil limitations within the rooting zone (w) excess of water