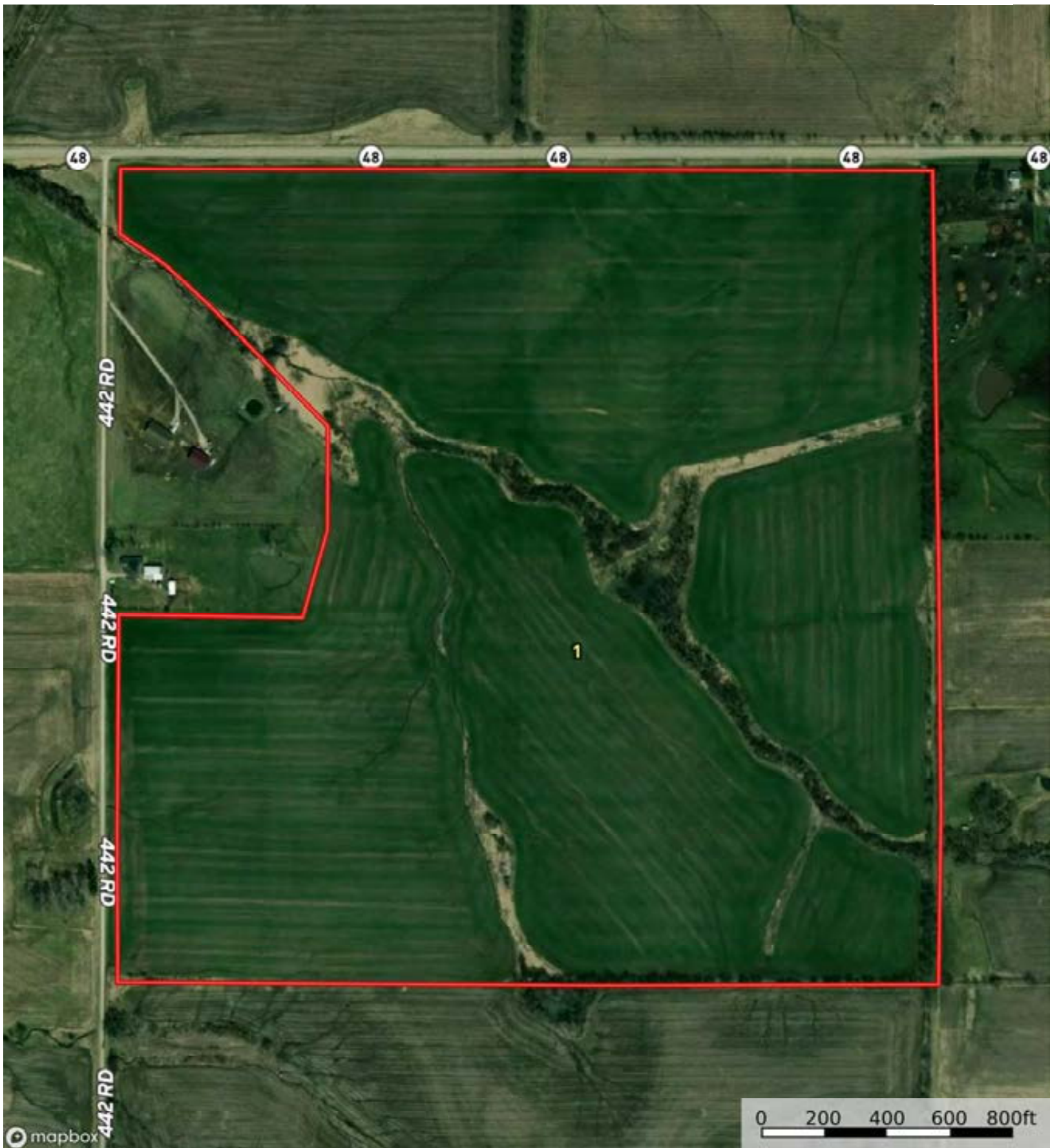


A-22249

Gentry County, Nodaway County, Andrew County, Missouri, 3318 AC



mapbox

Boundary

0 200 400 600 800ft

id. The information contained herein was obtained from sources deemed to be reliable. id. Services makes no warranties or guarantees as to the completeness or accuracy thereof.



Boundary

0 200 400 600 800ft

Boundary 143.01 ac

SOIL CODE	SOIL DESCRIPTION	ACRES	%	CPI	NCCPI	CAP
30087	Grundy silt loam, 5 to 9 percent slopes	40.63	28.41	0	66	3e
30136	Lamoni loam, 5 to 9 percent slopes	36.98	25.86	0	61	3e
30085	Grundy silt loam, 2 to 5 percent slopes	31.33	21.91	0	74	2e
30120	Lagonda silty clay loam, 5 to 9 percent slopes, eroded	21.48	15.02	0	67	3e
34020	Colo silty clay loam, drainageway, 2 to 5 percent slopes, frequently flooded	6.76	4.73	0	82	2w
30200	Shelby loam, 9 to 14 percent slopes	5.67	3.97	0	72	3e
30133	Lamoni clay loam, 5 to 9 percent slopes, eroded	0.16	0.11	0	56	3e
TOTALS		143.01(*)	100%	..	67.6	2.73

(*) Total acres may differ in the second decimal compared to the sum of each acreage soil. This is due to a round error because we only show the acres of each soil with two decimal.



A-22249

Gentry County, Nodaway County, Andrew County, Missouri, 3318 AC



Boundary



 Boundary

0 200 400 600 800ft

 Boundary 68.48 ac

SOIL CODE	SOIL DESCRIPTION	ACRES	%	CPI	NCCPI	CAP
30133	Lamoni clay loam, 5 to 9 percent slopes, eroded	15.54	22.69	0	56	3e
30092	Grundy silty clay loam, 5 to 9 percent slopes, moderately eroded	14.7	21.46	0	74	3e
36020	Kennebec silt loam, 0 to 2 percent slopes, occasionally flooded	14.31	20.89	0	91	2w
34020	Colo silty clay loam, drainageway, 2 to 5 percent slopes, frequently flooded	8.6	12.56	0	82	2w
13510	Colo silty clay loam, heavy till, 0 to 2 percent slopes, occasionally flooded	8.37	12.22	0	95	2w
30085	Grundy silt loam, 2 to 5 percent slopes	6.96	10.16	0	74	2e
TOTALS		68.48 (*)	100%	-	77.03	2.44

(*) Total acres may differ in the second decimal compared to the sum of each acreage soil. This is due to a round error because we only show the acres of each soil with two decimal.

