

A-22249

Gentry County, Nodaway County, Andrew County, Missouri, 3318 AC



Boundary



The information contained herein was obtained from sources deemed to be reliable. ID. Services makes no warranties or guarantees as to the completeness or accuracy thereof.

A-22249

Gentry County, Nodaway County, Andrew County, Missouri, 3318 AC



mapbox

Boundary

The information contained herein was obtained from sources deemed to be reliable. id. Services makes no warranties or guarantees as to the completeness or accuracy thereof.

Boundary 56.5 ac

SOIL CODE	SOIL DESCRIPTION	ACRES	%	CPI	NCCPI	CAP
30133	Lamoni clay loam, 5 to 9 percent slopes, eroded	36.58	64.74	0	56	3e
30085	Grundy silt loam, 2 to 5 percent slopes	11.3	20	0	74	2e
10172	Shelby clay loam, 9 to 14 percent slopes, moderately eroded	8.38	14.83	0	68	3e
34010	Humeston silt loam, 0 to 2 percent slopes, rarely flooded	0.2	0.35	0	79	2w
34020	Colo silty clay loam, drainageway, 2 to 5 percent slopes, frequently flooded	0.04	0.07	0	82	2w
TOTALS		56.5(*)	100%	-	61.48	2.8


(*) Total acres may differ in the second decimal compared to the sum of each acreage soil. This is due to a round error because we only show the acres of each soil with two decimal.

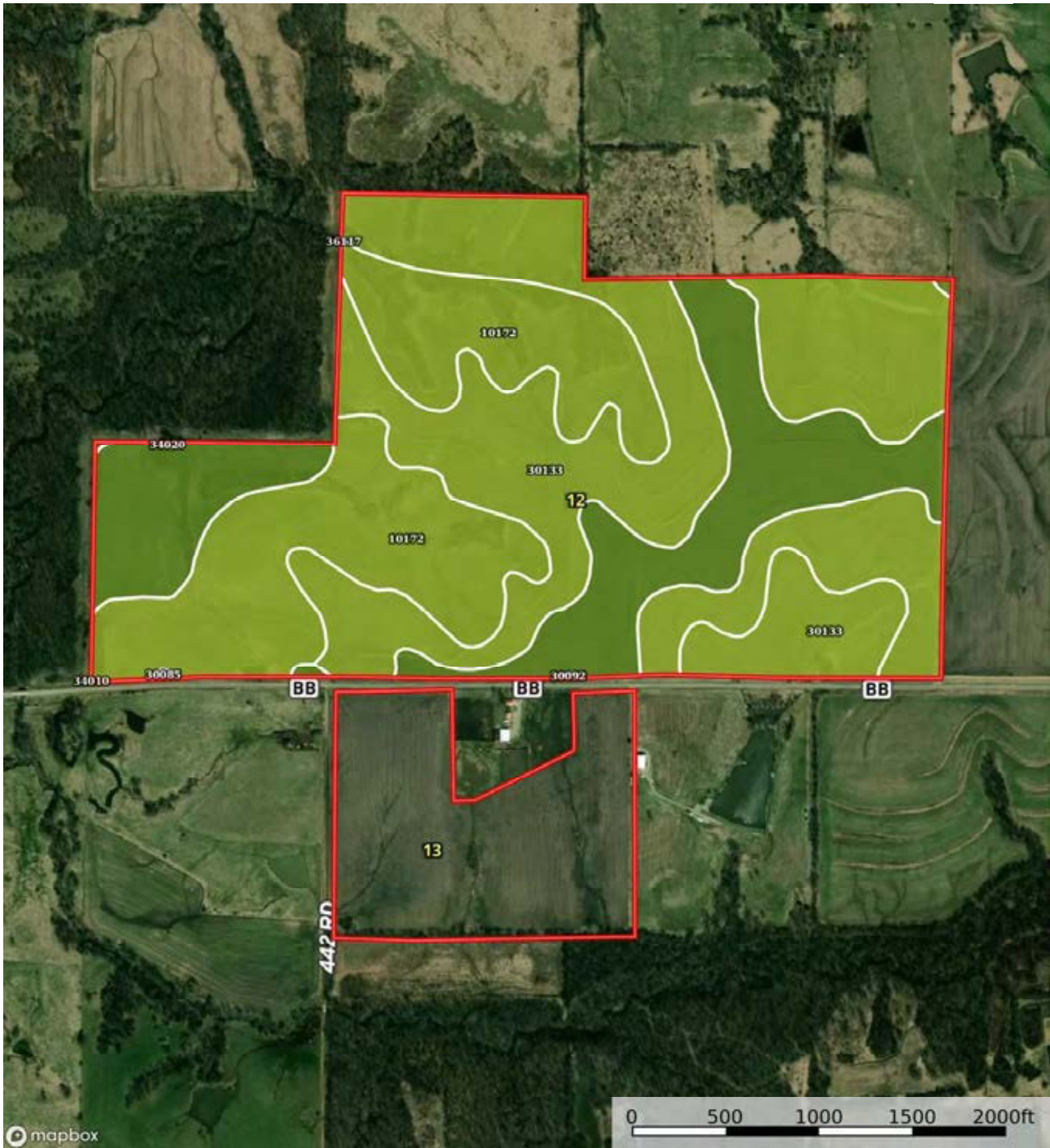


A-22249

Gentry County, Nodaway County, Andrew County, Missouri, 3318 AC



 Boundary



Boundary

Boundary 212.1 ac

SOIL CODE	SOIL DESCRIPTION	ACRES	%	CPI	NCCPI	CAP
30133	Lamoni clay loam, 5 to 9 percent slopes, erodec	86.47	40.77	0	56	3e
10172	Shelby clay loam, 9 to 14 percent slopes, moderately eroded	60.79	28.67	0	68	3e
30085	Grundy silt loam, 2 to 5 percent slopes	32.94	15.53	0	74	2e
30092	Grundy silty clay loam, 5 to 9 percent slopes, moderately eroded	16.87	7.95	0	74	3e
34010	Humeston silt loam, 0 to 2 percent slopes, rarely floodec	14.83	6.99	0	79	2w
34020	Colo silty clay loam, drainageway, 2 to 5 percent slopes, frequently floodec	0.17	0.08	0	82	2w
36117	Nodaway silt loam, heavy till, 0 to 2 percent slopes, occasionally floodec	0.03	0.01	0	84	2w
TOTALS		212.14 (*)	100%	-	65.31	2.77

(*) Total acres may differ in the second decimal compared to the sum of each acreage soil. This is due to a round error because we only show the acres of each soil with two decimal.

