

A-22249

Gentry County, Nodaway County, Andrew County, Missouri, 3318 AC



mapbox

Boundary

The information contained herein was obtained from sources deemed to be reliable. id. Land ID™ Services makes no warranties or guarantees as to the completeness or accuracy thereof.

A-22249

Gentry County, Nodaway County, Andrew County, Missouri, 3318 AC



Boundary

 Boundary 41.95 ac

SOIL CODE	SOIL DESCRIPTION	ACRES	%	CPI	NCCPI	CAP
30133	Lamoni clay loam, 5 to 9 percent slopes, eroded	19.69	46.94	0	56	3e
30092	Grundy silty clay loam, 5 to 9 percent slopes, moderately eroded	13.77	32.82	0	74	3e
30085	Grundy silt loam, 2 to 5 percent slopes	8.49	20.24	0	74	2e
<b>TOTALS</b>		<b>41.95</b> (*)	<b>100%</b>	<b>..</b>	<b>65.55</b>	<b>2.8</b>

(\*) Total acres may differ in the second decimal compared to the sum of each acreage soil. This is due to a round error because we only show the acres of each soil with two decimal.



A-22249

Gentry County, Nodaway County, Andrew County, Missouri, 3318 AC



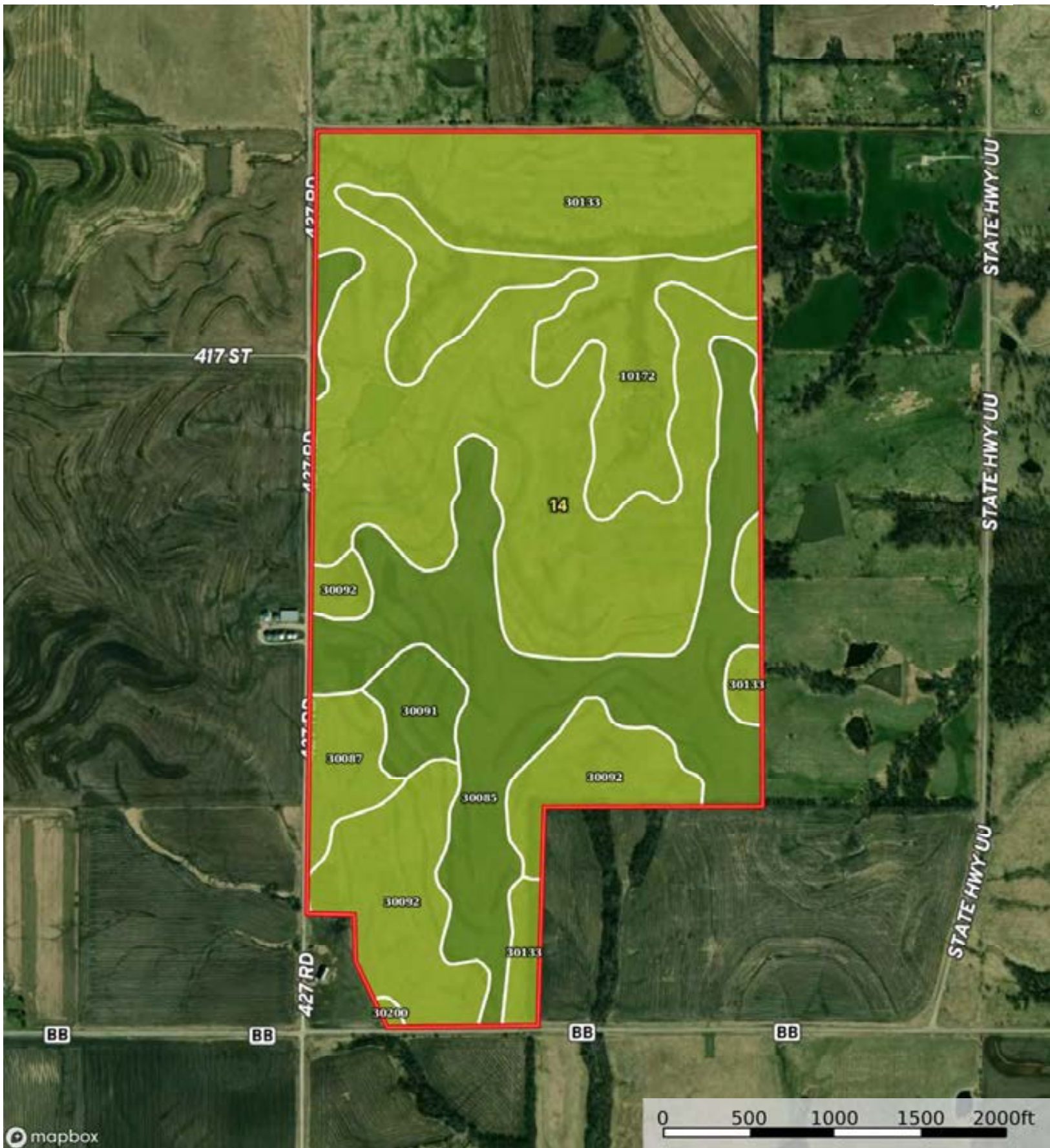
Boundary



The information contained herein was obtained from sources deemed to be reliable. id.com makes no warranties or guarantees as to the completeness or accuracy thereof.

A-22249

Gentry County, Nodaway County, Andrew County, Missouri, 3318 AC



Boundary

Boundary 273.86 ac

SOIL CODE	SOIL DESCRIPTION	ACRES	%	CPI	NCCPI	CAP
30133	Lamoni clay loam, 5 to 9 percent slopes, eroded	124.92	45.62	0	56	3e
30085	Grundy silt loam, 2 to 5 percent slopes	64.24	23.46	0	74	2e
30092	Grundy silty clay loam, 5 to 9 percent slopes, moderately eroded	35.87	13.1	0	74	3e
10172	Shelby clay loam, 9 to 14 percent slopes, moderately eroded	33.07	12.08	0	68	3e
30087	Grundy silt loam, 5 to 9 percent slopes	8.15	2.98	0	66	3e
30091	Grundy silty clay loam, 2 to 5 percent slopes, moderately eroded	7.16	2.61	0	74	2e
30200	Shelby loam, 9 to 14 percent slopes	0.45	0.16	0	72	3e
<b>TOTALS</b>		273.86(*)	100%	..	64.83	2.74

(\*) Total acres may differ in the second decimal compared to the sum of each acreage soil. This is due to a round error because we only show the acres of each soil with two decimal.

