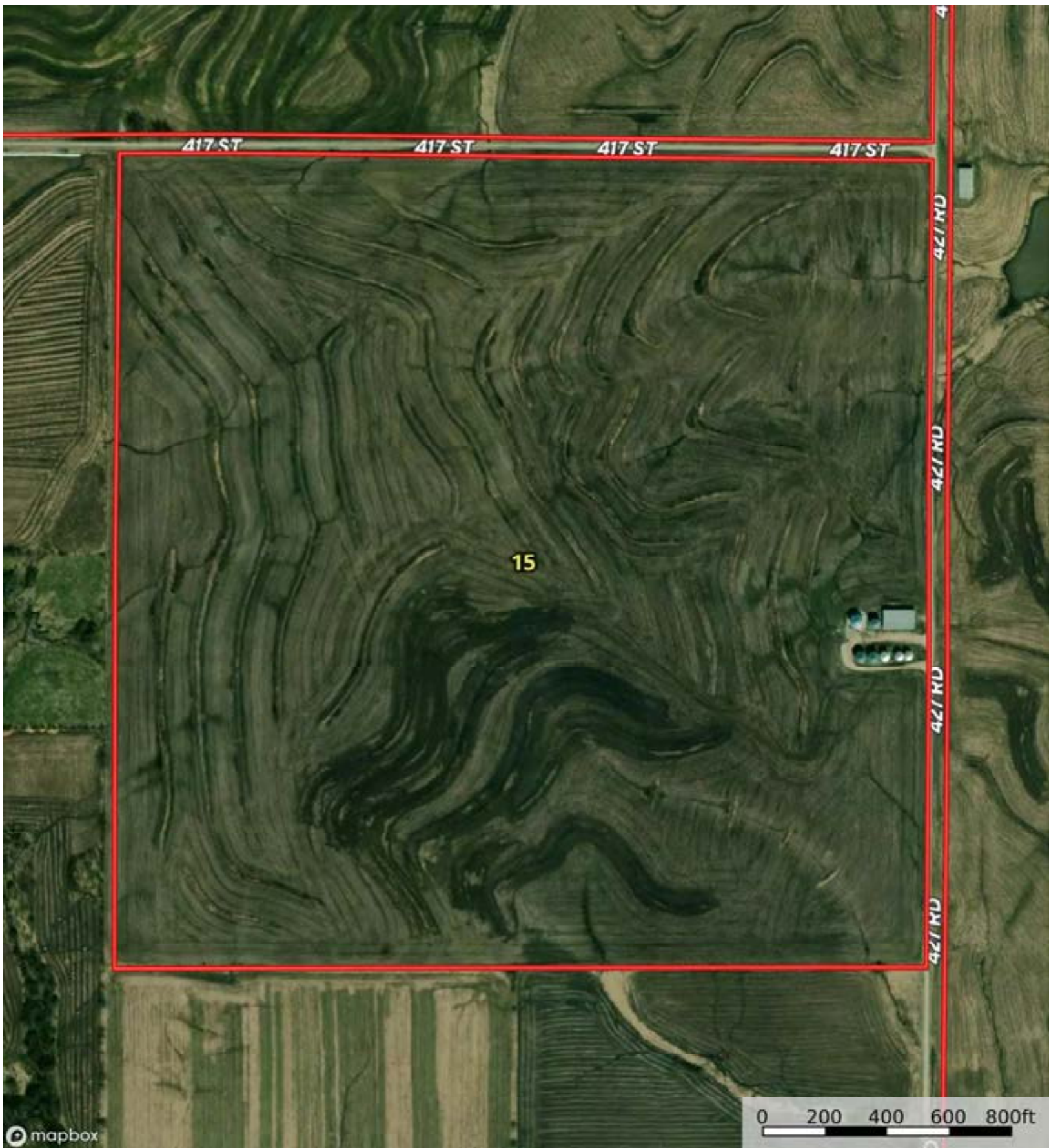


A-22249

Gentry County, Nodaway County, Andrew County, Missouri, 3318 AC



mapbox

Boundary

0 200 400 600 800ft

The information contained herein was obtained from sources deemed to be reliable. id. Land ID™ Services makes no warranties or guarantees as to the completeness or accuracy thereof.

A-22249

Gentry County, Nodaway County, Andrew County, Missouri, 3318 AC



mapbox

Boundary

0 200 400 600 800ft

The information contained herein was obtained from sources deemed to be reliable. id. Services makes no warranties or guarantees as to the completeness or accuracy thereof.

Boundary 157.96 ac

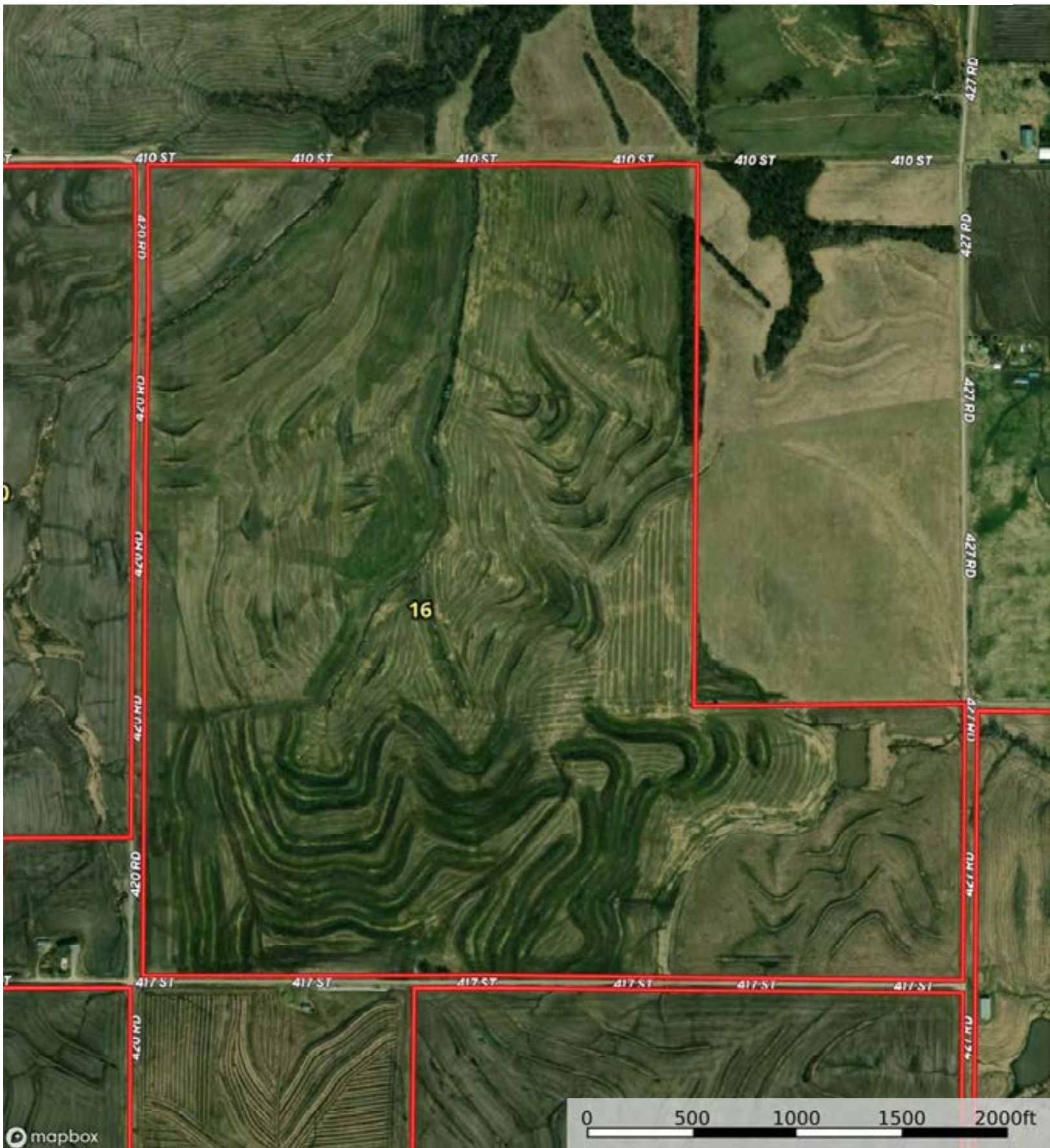
SOIL CODE	SOIL DESCRIPTION	ACRES	%	CPI	NCCPI	CAP
30085	Grundy silt loam, 2 to 5 percent slopes	68.49	43.36	0	74	2e
30087	Grundy silt loam, 5 to 9 percent slopes	53.73	34.01	0	66	3e
30092	Grundy silty clay loam, 5 to 9 percent slopes, moderately eroded	22.01	13.93	0	74	3e
30133	Lamoni clay loam, 5 to 9 percent slopes, eroded	13.73	8.69	0	56	3e
TOTALS		157.96(*)	100%	..	69.71	2.57

(*) Total acres may differ in the second decimal compared to the sum of each acreage soil. This is due to a round error because we only show the acres of each soil with two decimal.



A-22249

Gentry County, Nodaway County, Andrew County, Missouri, 3318 AC

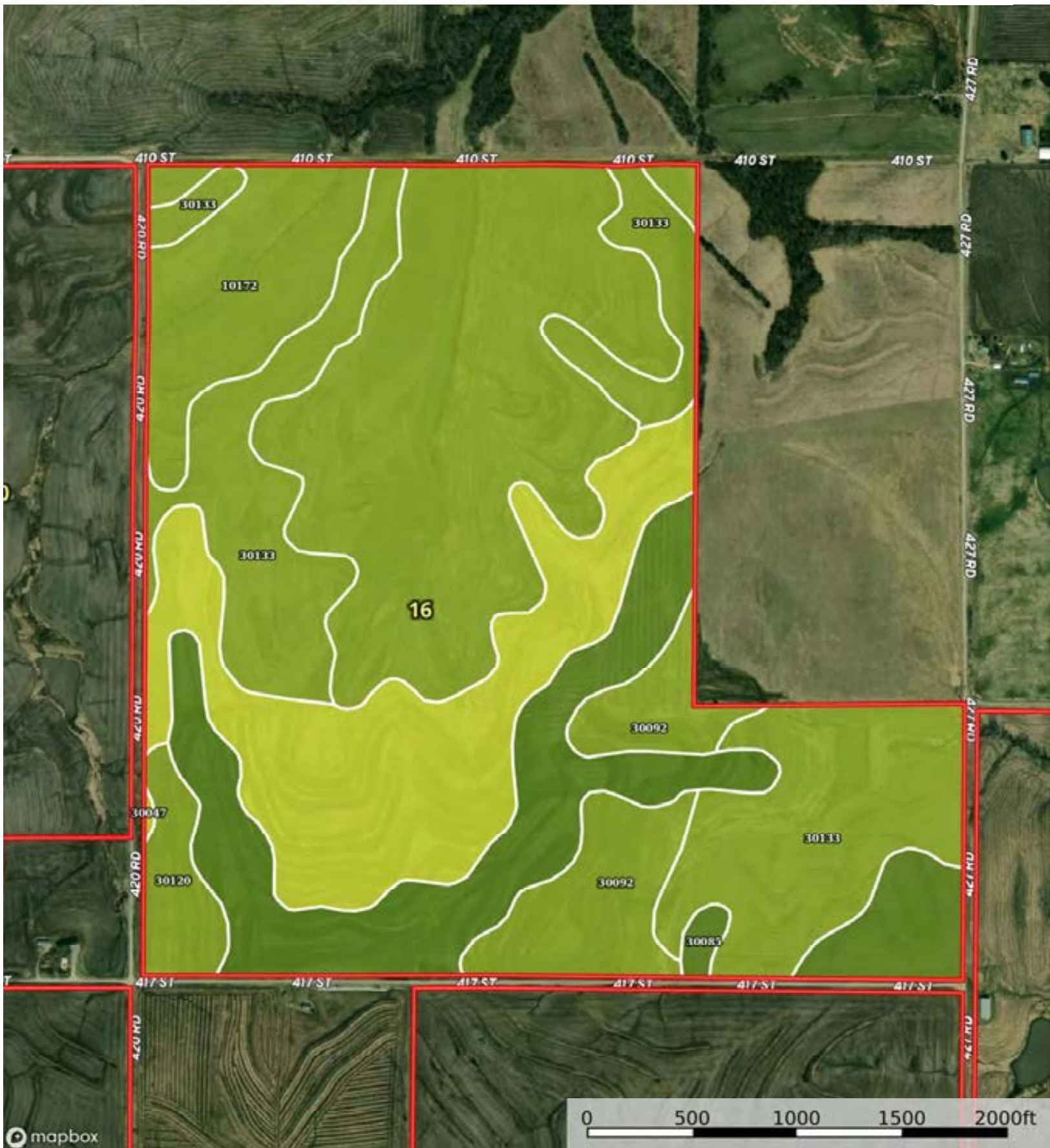


mapbox

Boundary

A-22249

Gentry County, Nodaway County, Andrew County, Missouri, 3318 AC



Boundary

Boundary 273.06 ac

SOIL CODE	SOIL DESCRIPTION	ACRES	%	CPI	NCCPI	CAP
10172	Shelby clay loam, 9 to 14 percent slopes, moderately eroded	92.06	33.71	0	68	3e
30133	Lamoni clay loam, 5 to 9 percent slopes, eroded	62.32	22.82	0	56	3e
30047	Clarinda silty clay loam, 5 to 9 percent slopes, moderately eroded	46.7	17.1	0	52	4w
30085	Grundy silt loam, 2 to 5 percent slopes	45.3	16.59	0	74	2e
30092	Grundy silty clay loam, 5 to 9 percent slopes, moderately eroded	19.76	7.24	0	74	3e
30120	Lagonda silty clay loam, 5 to 9 percent slopes, eroded	6.92	2.53	0	67	3e
TOTALS		273.06(*)	100%	..	63.93	3.01

(*) Total acres may differ in the second decimal compared to the sum of each acreage soil. This is due to a round error because we only show the acres of each soil with two decimal.

