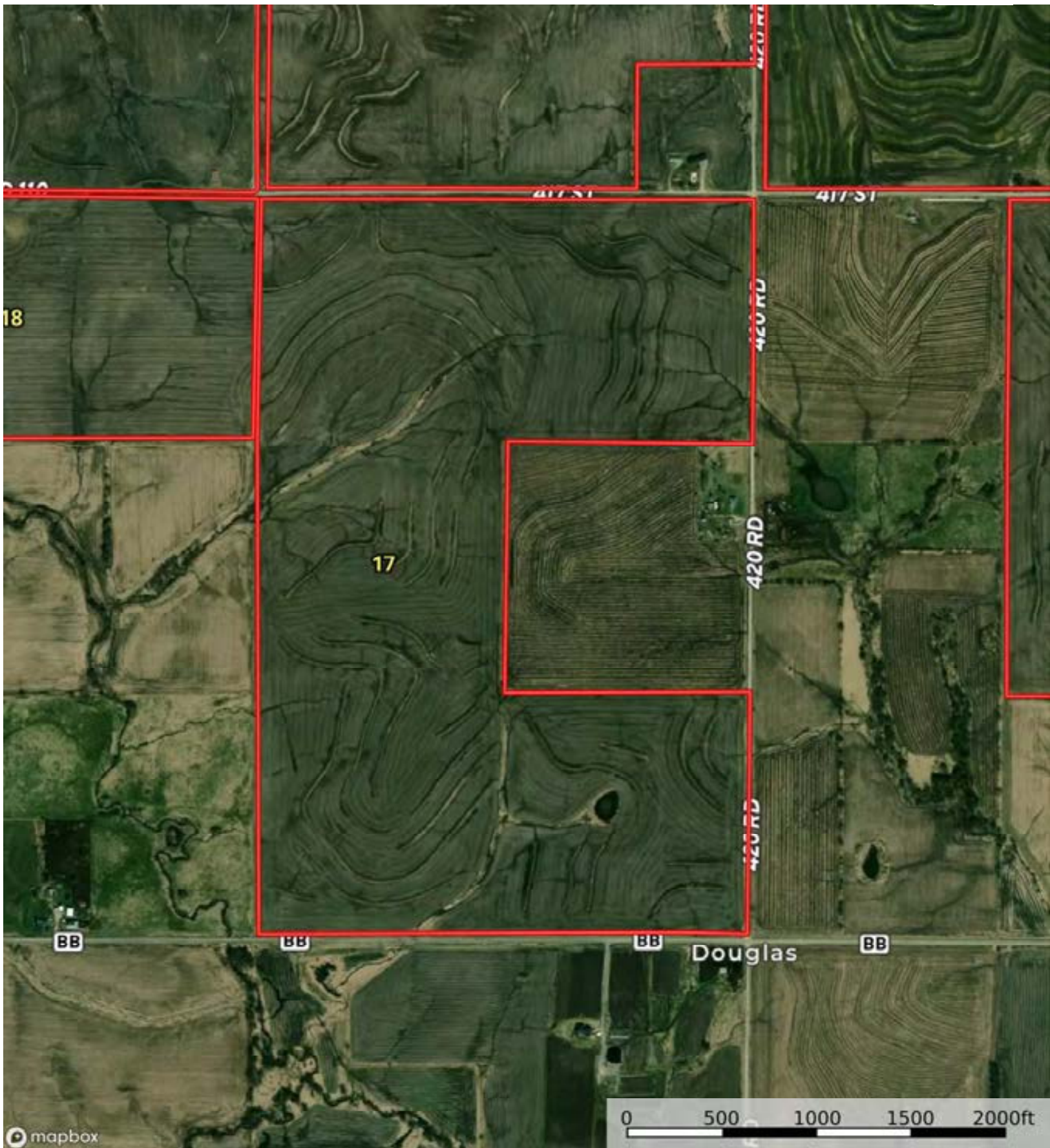


A-22249

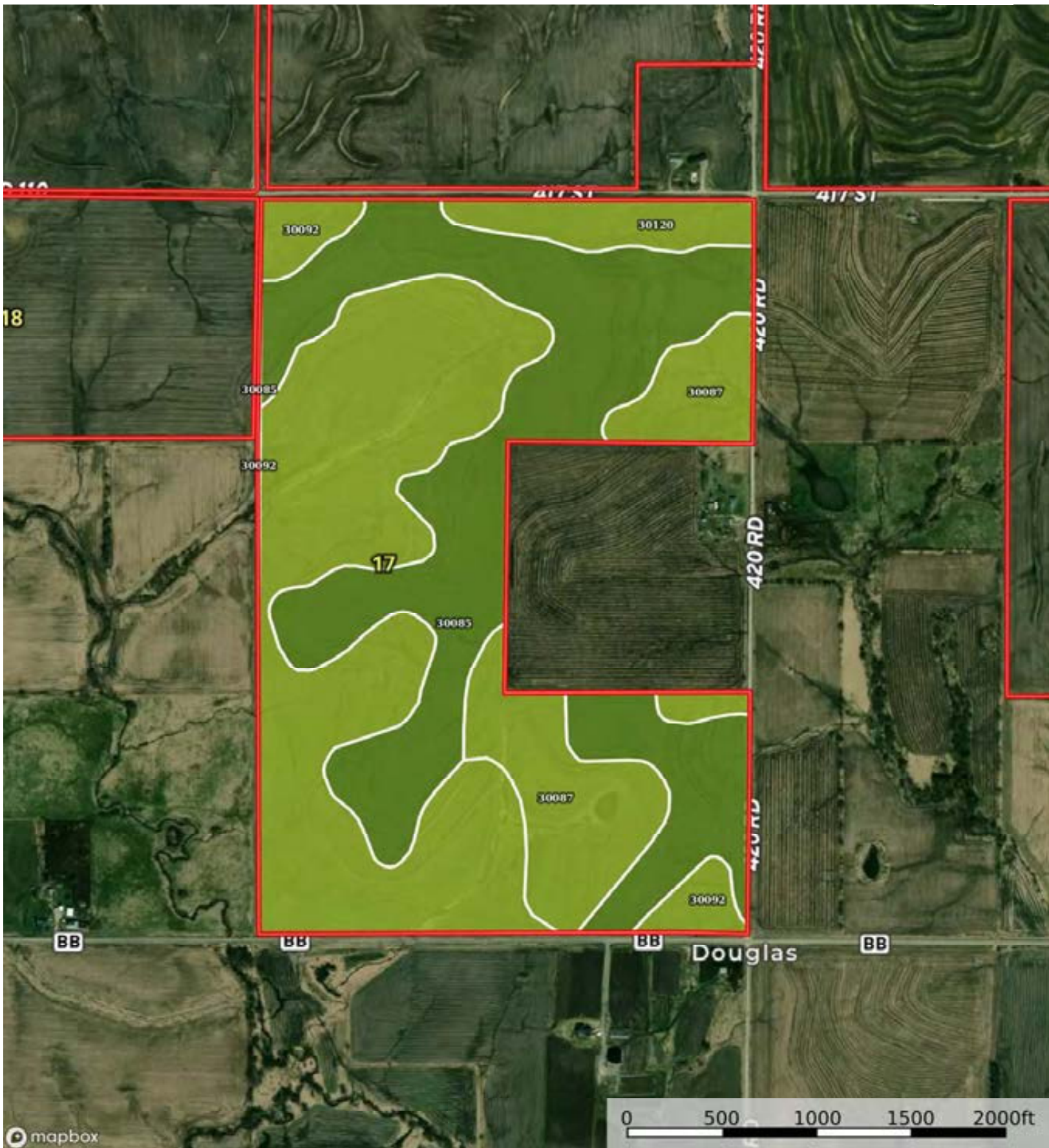
Gentry County, Nodaway County, Andrew County, Missouri, 3318 AC



Boundary

A-22249

Gentry County, Nodaway County, Andrew County, Missouri, 3318 AC



Boundary

Boundary 193.79 ac

SOIL CODE	SOIL DESCRIPTION	ACRES	%	CPI	NCCPI	CAP
30092	Grundy silty clay loam, 5 to 9 percent slopes, moderately eroded	79.42	40.98	0	74	3e
30085	Grundy silt loam, 2 to 5 percent slopes	77.64	40.06	0	74	2e
30087	Grundy silt loam, 5 to 9 percent slopes	28.14	14.52	0	66	3e
30120	Lagonda silty clay loam, 5 to 9 percent slopes, eroded	8.59	4.43	0	67	3e
<b>TOTALS</b>		193.79(*)	100%	..	72.53	2.6

(\*) Total acres may differ in the second decimal compared to the sum of each acreage soil. This is due to a round error because we only show the acres of each soil with two decimal.



A-22249

Gentry County, Nodaway County, Andrew County, Missouri, 3318 AC



mapbox

Boundary

A-22249

Gentry County, Nodaway County, Andrew County, Missouri, 3318 AC



Boundary

Boundary 76.44 ac

SOIL CODE	SOIL DESCRIPTION	ACRES	%	CPI	NCCPI	CAP
30092	Grundy silty clay loam, 5 to 9 percent slopes, moderately eroded	52.89	69.19	0	74	3e
10164	Macksburg silty clay loam, 2 to 5 percent slopes	12.73	16.65	0	74	2e
30142	Lamoni silty clay loam, 5 to 9 percent slopes, moderately eroded	5.21	6.82	0	60	3e
13629	Colo silt loam, 1 to 4 percent slopes, occasionally flooded	3.04	3.98	0	83	2w
30085	Grundy silt loam, 2 to 5 percent slopes	2.56	3.35	0	74	2e
30200	Shelby loam, 9 to 14 percent slopes	0.01	0.01	0	72	3e
<b>TOTALS</b>		<b>76.44</b> (*)	<b>100%</b>	<b>..</b>	<b>73.4</b>	<b>2.76</b>

(\*) Total acres may differ in the second decimal compared to the sum of each acreage soil. This is due to a round error because we only show the acres of each soil with two decimal.

