

A-22249

Gentry County, Nodaway County, Andrew County, Missouri, 3318 AC



mapbox

Boundary



mapbox

Boundary

 Boundary 352.31 ac

SOIL CODE	SOIL DESCRIPTION	ACRES	%	CPI	NCCPI	CAP
30200	Shelby loam, 9 to 14 percent slopes	158.17	44.89	0	72	3e
30142	Lamoni silty clay loam, 5 to 9 percent slopes, moderately eroded	85.26	24.2	0	60	3e
13627	Colo, frequently flooded-Judson silty clay loams, 0 to 5 percent slopes	51.87	14.72	0	76	2w
30057	Gara loam, 14 to 18 percent slopes	29.74	8.44	0	68	6e
10164	Macksburg silty clay loam, 2 to 5 percent slopes	11.67	3.31	0	74	2e
30085	Grundy silt loam, 2 to 5 percent slopes	6.07	1.72	0	74	2e
10124	Sharpsburg silty clay loam, loess hill, 2 to 5 percent slopes	5.8	1.65	0	80	2e
30092	Grundy silty clay loam, 5 to 9 percent slopes, moderately eroded	3.73	1.06	0	74	3e
TOTALS		352.31(*)	100%	-	69.6	3.04

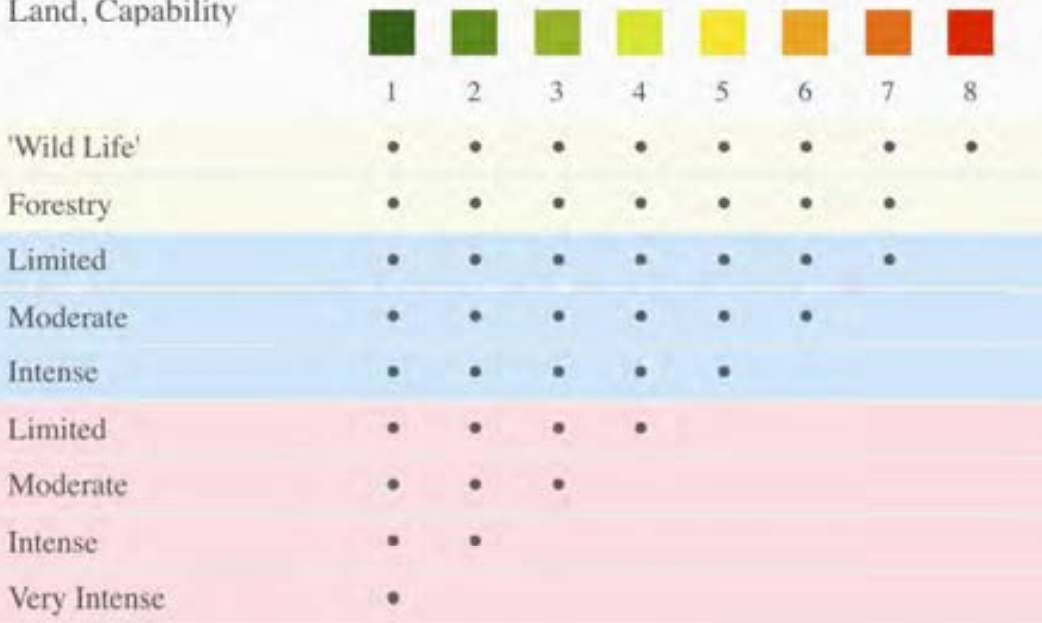
(*) Total acres may differ in the second decimal compared to the sum of each acreage soil. This is due to a round error because we only show the acres of each soil with two decimal.

Capability Legend

Increased Limitations and Hazards

Decreased Adaptability and Freedom of Choice Users

Land, Capability



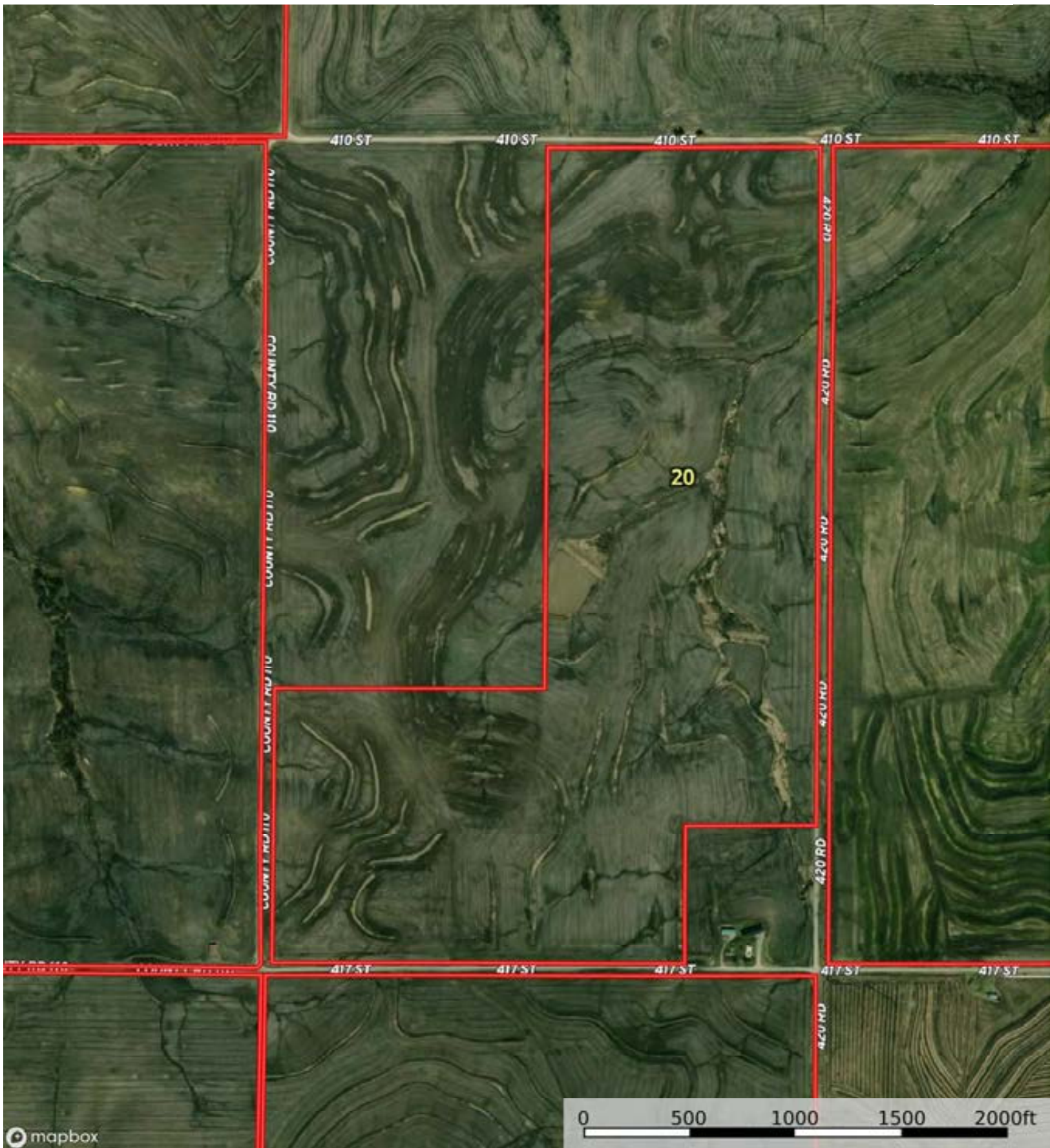
Grazing Cultivation

(c) climatic limitations (e) susceptibility to erosion

(s) soil limitations within the rooting zone (w) excess of water

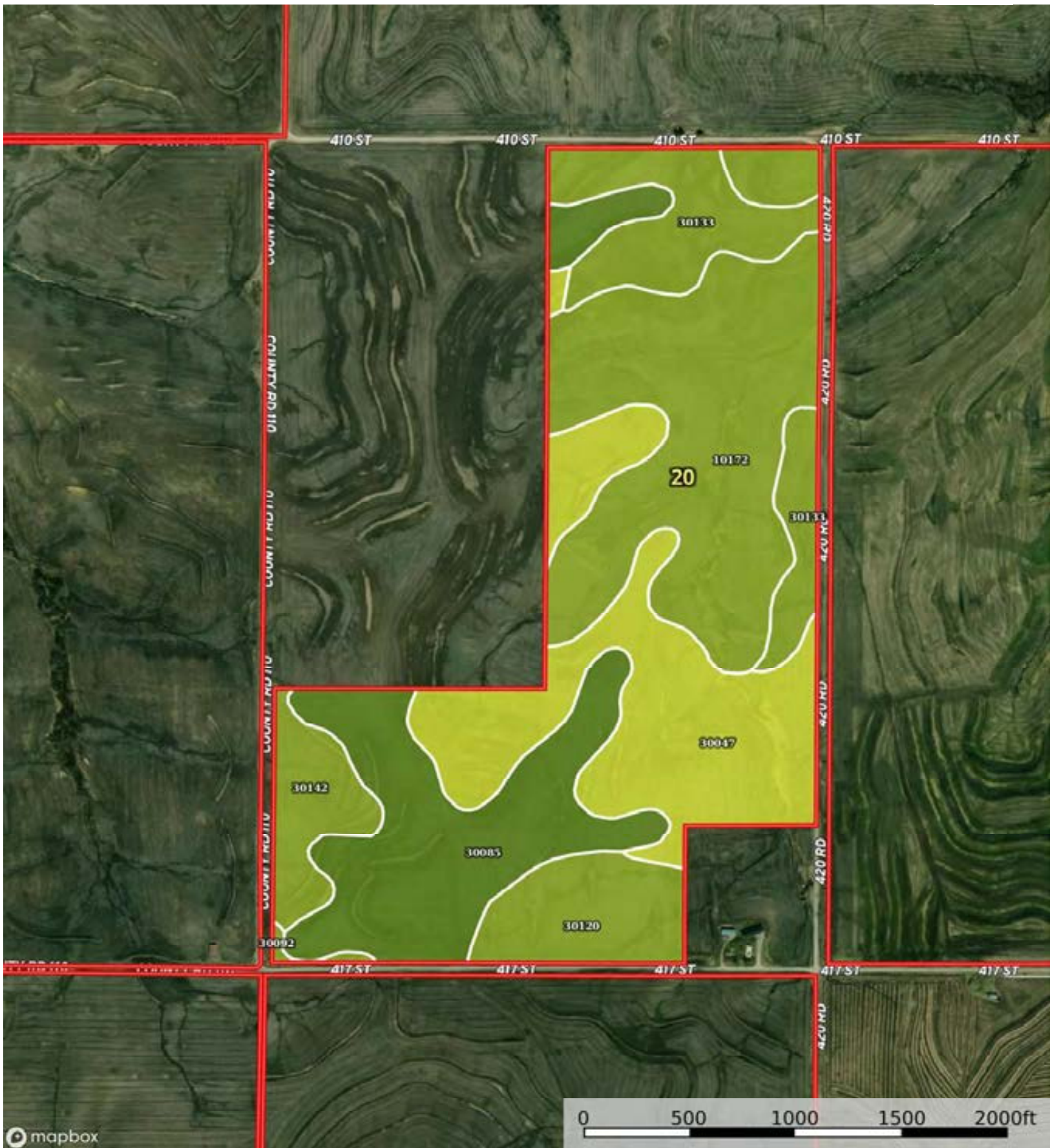
A-22249

Gentry County, Nodaway County, Andrew County, Missouri, 3318 AC



mapbox

Boundary



mapbox

Boundary

 Boundary 143.84 ac

SOIL CODE	SOIL DESCRIPTION	ACRES	%	CPI	NCCPI	CAP
10172	Shelby clay loam, 9 to 14 percent slopes, moderately eroded	42.98	29.88	0	68	3e
30047	Clarinda silty clay loam, 5 to 9 percent slopes, moderately eroded	34.86	24.23	0	52	4w
30085	Grundy silt loam, 2 to 5 percent slopes	30.56	21.24	0	74	2e
30133	Lamoni clay loam, 5 to 9 percent slopes, eroded	17.15	11.92	0	56	3e
30120	Lagonda silty clay loam, 5 to 9 percent slopes, eroded	10.34	7.19	0	67	3e
30142	Lamoni silty clay loam, 5 to 9 percent slopes, moderately eroded	7.43	5.17	0	60	3e
30092	Grundy silty clay loam, 5 to 9 percent slopes, moderately eroded	0.52	0.36	0	74	3e
TOTALS		143.84(*)	100%	-	63.5	3.03

(*) Total acres may differ in the second decimal compared to the sum of each acreage soil. This is due to a round error because we only show the acres of each soil with two decimal.

