

A-22249

Gentry County, Nodaway County, Andrew County, Missouri, 3318 AC



Boundary

A-22249

Gentry County, Nodaway County, Andrew County, Missouri, 3318 AC



mapbox

Boundary

Boundary 35.22 ac

SOIL CODE	SOIL DESCRIPTION	ACRES	%	CPI	NCCPI	CAP
10159	Arispe silty clay loam, 5 to 9 percent slopes, eroded	21.2	60.19	0	75	3e
30085	Grundy silt loam, 2 to 5 percent slopes	14.02	39.81	0	74	2e
TOTALS		35.22(*)	100%	-	74.6	2.6

(*) Total acres may differ in the second decimal compared to the sum of each acreage soil. This is due to a round error because we only show the acres of each soil with two decimal.



A-22249

Gentry County, Nodaway County, Andrew County, Missouri, 3318 AC



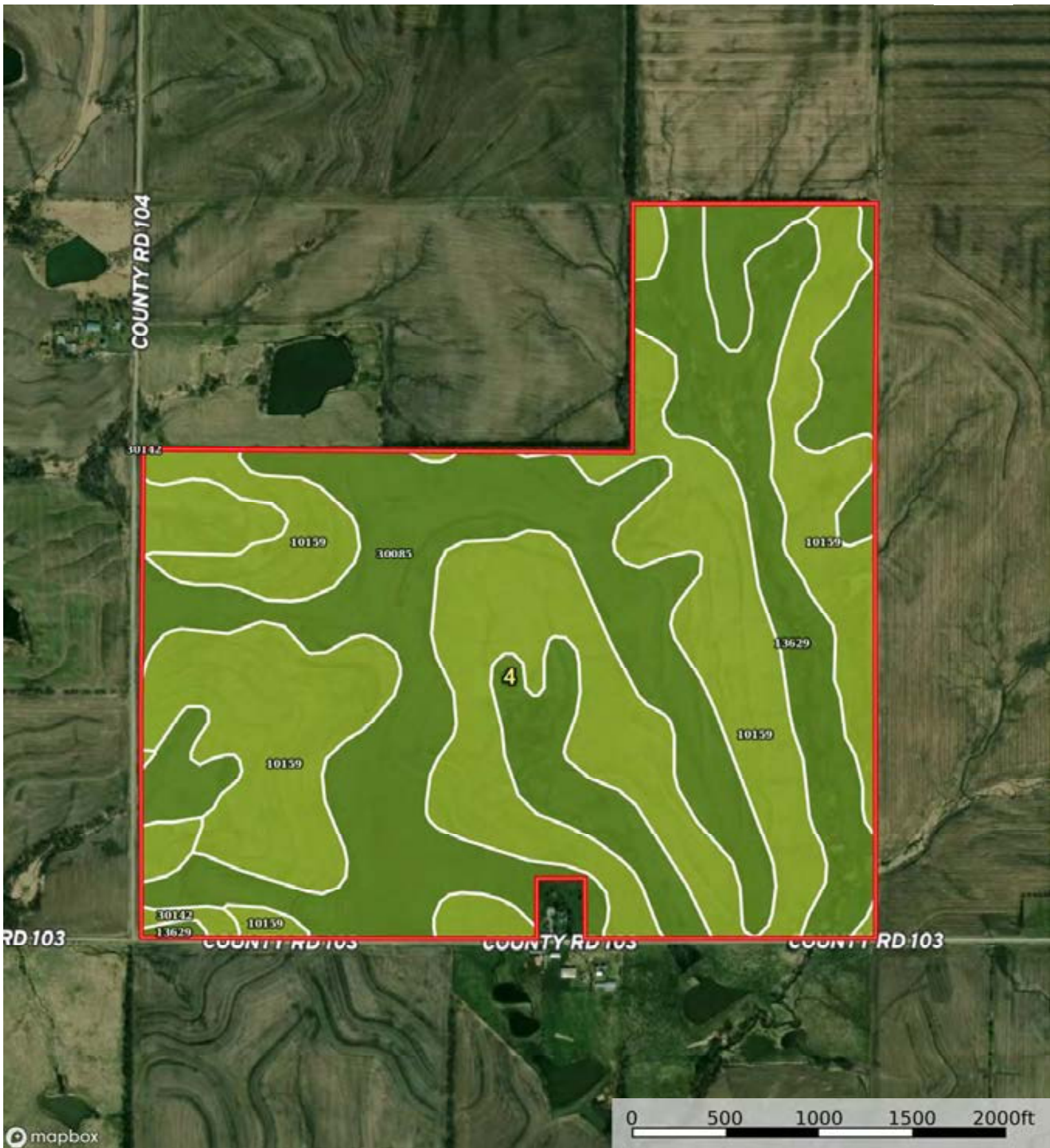
Boundary



The information contained herein was obtained from sources deemed to be reliable. id.com Services makes no warranties or guarantees as to the completeness or accuracy thereof.

A-22249

Gentry County, Nodaway County, Andrew County, Missouri, 3318 AC



mapbox

0 500 1000 1500 2000ft

Boundary

The information contained herein was obtained from sources deemed to be reliable. id. Services makes no warranties or guarantees as to the completeness or accuracy thereof.

Boundary 274.95 ac

SOIL CODE	SOIL DESCRIPTION	ACRES	%	CPI	NCCPI	CAP
10159	Arispe silty clay loam, 5 to 9 percent slopes, eroded	129.33	47.04	0	75	3e
30085	Grundy silt loam, 2 to 5 percent slopes	86.37	31.41	0	74	2e
13629	Colo silt loam, 1 to 4 percent slopes, occasionally flooded	50.39	18.33	0	83	2w
30142	Lamoni silty clay loam, 5 to 9 percent slopes, moderately eroded	8.86	3.22	0	60	3e
TOTALS		274.95(*)	100%	-	75.67	2.5

(*) Total acres may differ in the second decimal compared to the sum of each acreage soil. This is due to a round error because we only show the acres of each soil with two decimal.

