

A-22249

Gentry County, Nodaway County, Andrew County, Missouri, 3318 AC



mapbox

Boundary

The information contained herein was obtained from sources deemed to be reliable. id. Services makes no warranties or guarantees as to the completeness or accuracy thereof.

Boundary 58.34 ac

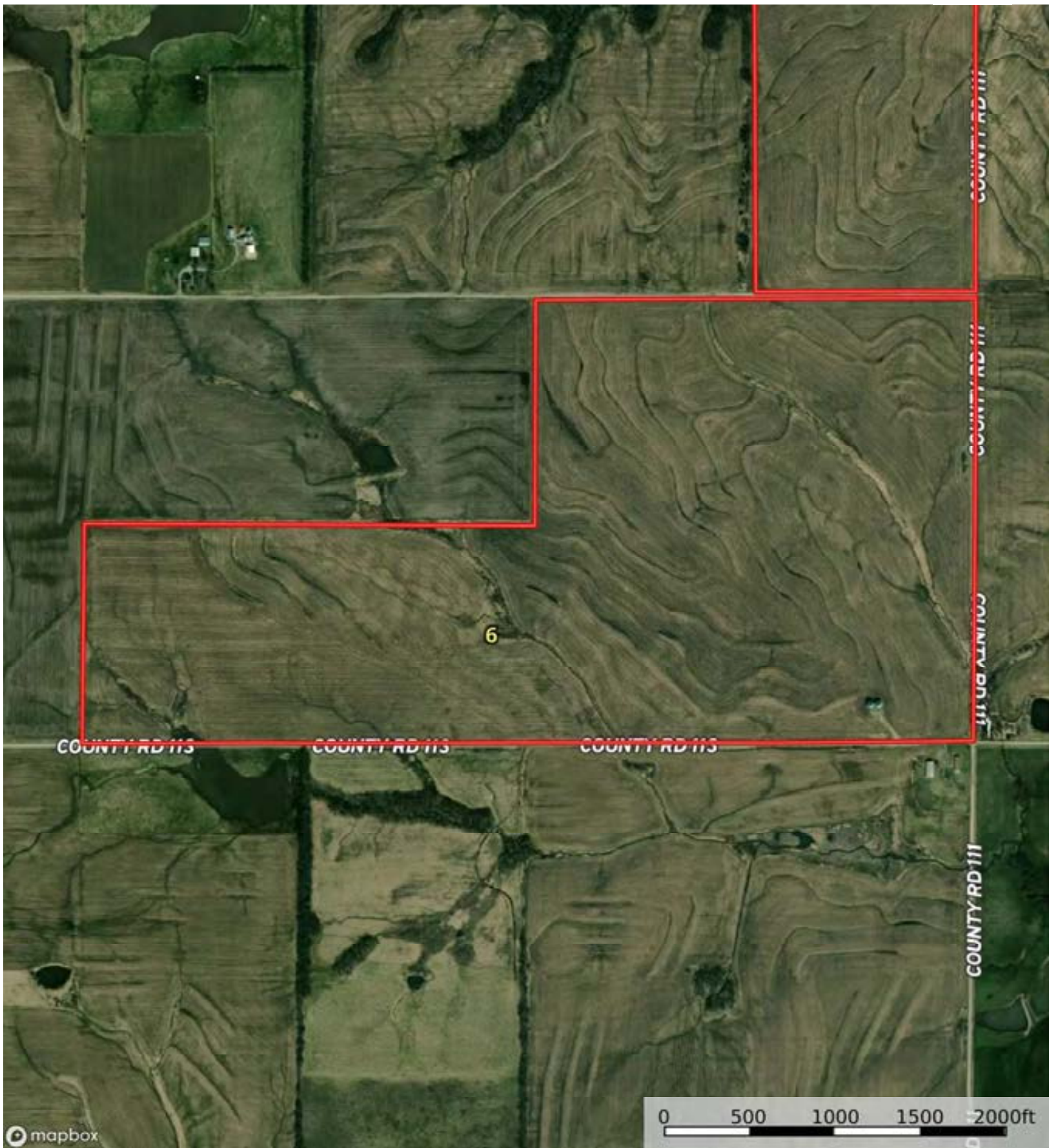
SOIL CODE	SOIL DESCRIPTION	ACRES	%	CPI	NCCPI	CAP
30142	Lamoni silty clay loam, 5 to 9 percent slopes, moderately eroded	22.25	38.14	0	60	3e
10159	Arispe silty clay loam, 5 to 9 percent slopes, eroded	21.03	36.05	0	75	3e
30085	Grundy silt loam, 2 to 5 percent slopes	10.5	18.0	0	74	2e
30200	Shelby loam, 9 to 14 percent slopes	4.56	7.82	0	72	3e
TOTALS		58.34 (*)	100%	..	68.86	2.82

(*) Total acres may differ in the second decimal compared to the sum of each acreage soil. This is due to a round error because we only show the acres of each soil with two decimal.



A-22249

Gentry County, Nodaway County, Andrew County, Missouri, 3318 AC



mapbox

Boundary

A-22249

Gentry County, Nodaway County, Andrew County, Missouri, 3318 AC



Boundary

 Boundary 232.82 ac

SOIL CODE	SOIL DESCRIPTION	ACRES	%	CPI	NCCPI	CAP
30085	Grundy silt loam, 2 to 5 percent slopes	104.28	44.79	0	74	2e
30092	Grundy silty clay loam, 5 to 9 percent slopes, moderately eroded	72.57	31.17	0	74	3e
10159	Arispe silty clay loam, 5 to 9 percent slopes, eroded	28.99	12.45	0	75	3e
13629	Colo silt loam, 1 to 4 percent slopes, occasionally flooded	26.98	11.59	0	83	2w
TOTALS		232.82(*)	100%	-	75.17	2.44

(*) Total acres may differ in the second decimal compared to the sum of each acreage soil. This is due to a round error because we only show the acres of each soil with two decimal.

