

A-22249

Gentry County, Nodaway County, Andrew County, Missouri, 3318 AC



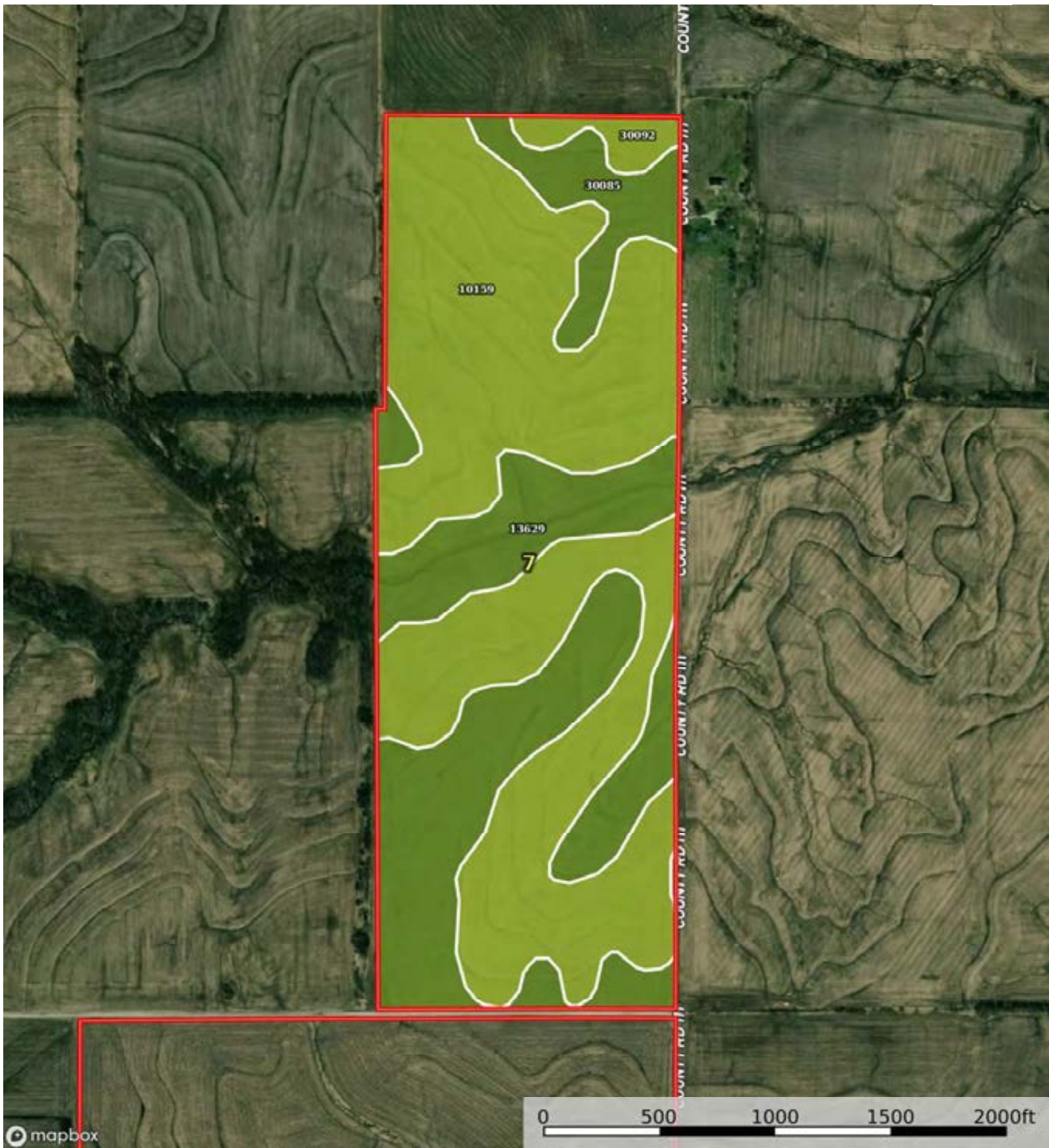
Boundary



The information contained herein was obtained from sources deemed to be reliable. Imagery and other services makes no warranties or guarantees as to the completeness or accuracy thereof.

A-22249

Gentry County, Nodaway County, Andrew County, Missouri, 3318 AC



Boundary

Boundary 115.26 ac

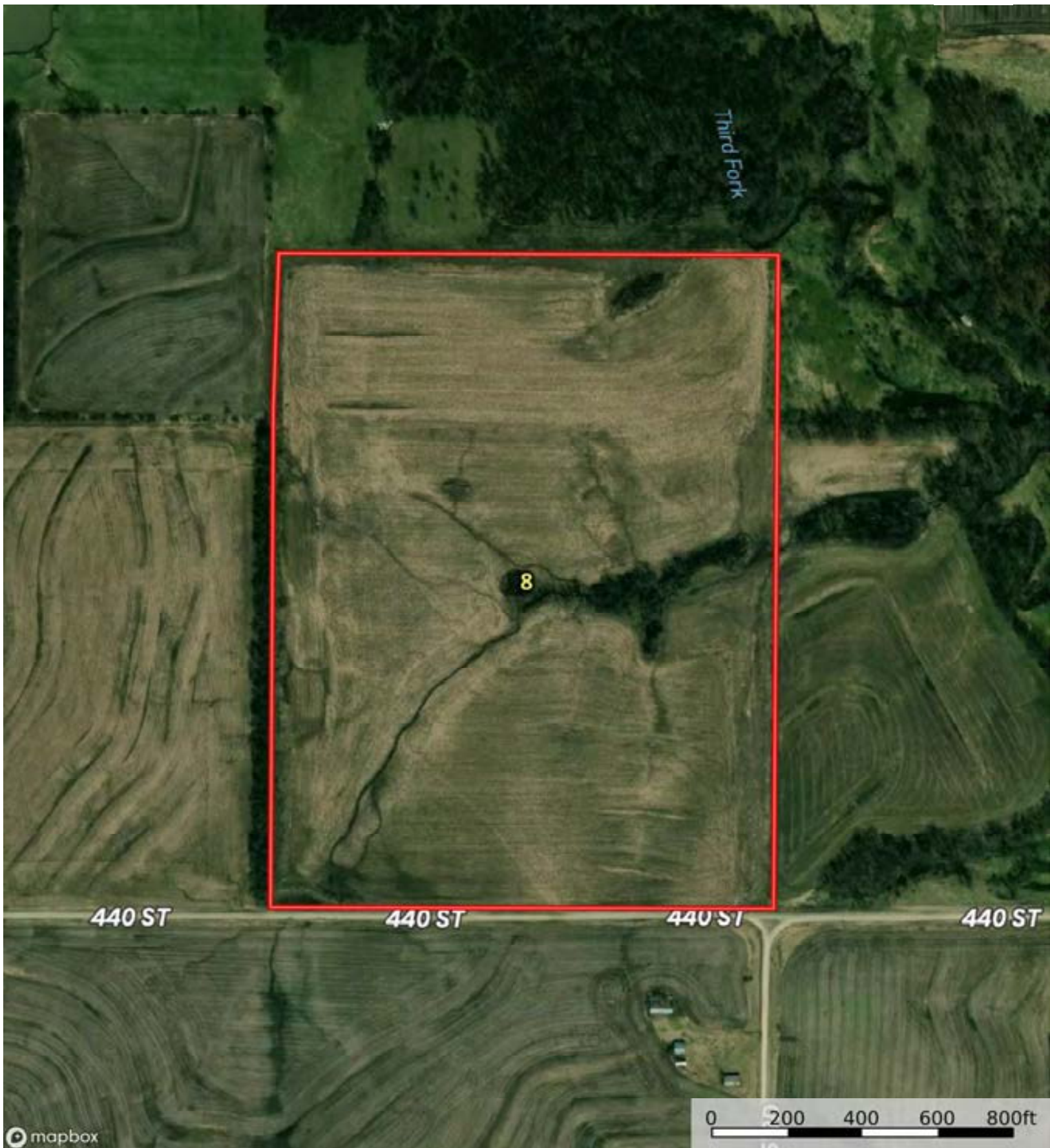
SOIL CODE	SOIL DESCRIPTION	ACRES	%	CPI	NCCPI	CAP
10159	Arispe silty clay loam, 5 to 9 percent slopes, eroded	68.11	59.09	0	75	3e
30085	Grundy silt loam, 2 to 5 percent slopes	29.03	25.19	0	74	2e
13629	Colo silt loam, 1 to 4 percent slopes, occasionally flooded	15.61	13.54	0	83	2w
30092	Grundy silty clay loam, 5 to 9 percent slopes, moderately eroded	2.51	2.18	0	74	3e
<b>TOTALS</b>		115.26(*)	100%	..	75.81	2.61

(\*) Total acres may differ in the second decimal compared to the sum of each acreage soil. This is due to a round error because we only show the acres of each soil with two decimal.



A-22249

Gentry County, Nodaway County, Andrew County, Missouri, 3318 AC



 Boundary

A-22249

Gentry County, Nodaway County, Andrew County, Missouri, 3318 AC



Boundary



The information contained herein was obtained from sources deemed to be reliable. id.com Services makes no warranties or guarantees as to the completeness or accuracy thereof.

Boundary 53.79 ac

SOIL CODE	SOIL DESCRIPTION	ACRES	%	CPI	NCCPI	CAP
30092	Grundy silty clay loam, 5 to 9 percent slopes, moderately eroded	26.63	49.51	0	74	3e
30133	Lamoni clay loam, 5 to 9 percent slopes, eroded	18.21	33.85	0	56	3e
30085	Grundy silt loam, 2 to 5 percent slopes	7.06	13.13	0	74	2e
30087	Grundy silt loam, 5 to 9 percent slopes	1.76	3.27	0	66	3e
34020	Colo silty clay loam, drainageway, 2 to 5 percent slopes, frequently flooded	0.13	0.24	0	82	2w
<b>TOTALS</b>		<b>53.79</b> (*)	<b>100%</b>	-	<b>67.66</b>	<b>2.87</b>

(\*) Total acres may differ in the second decimal compared to the sum of each acreage soil. This is due to a round error because we only show the acres of each soil with two decimal.

