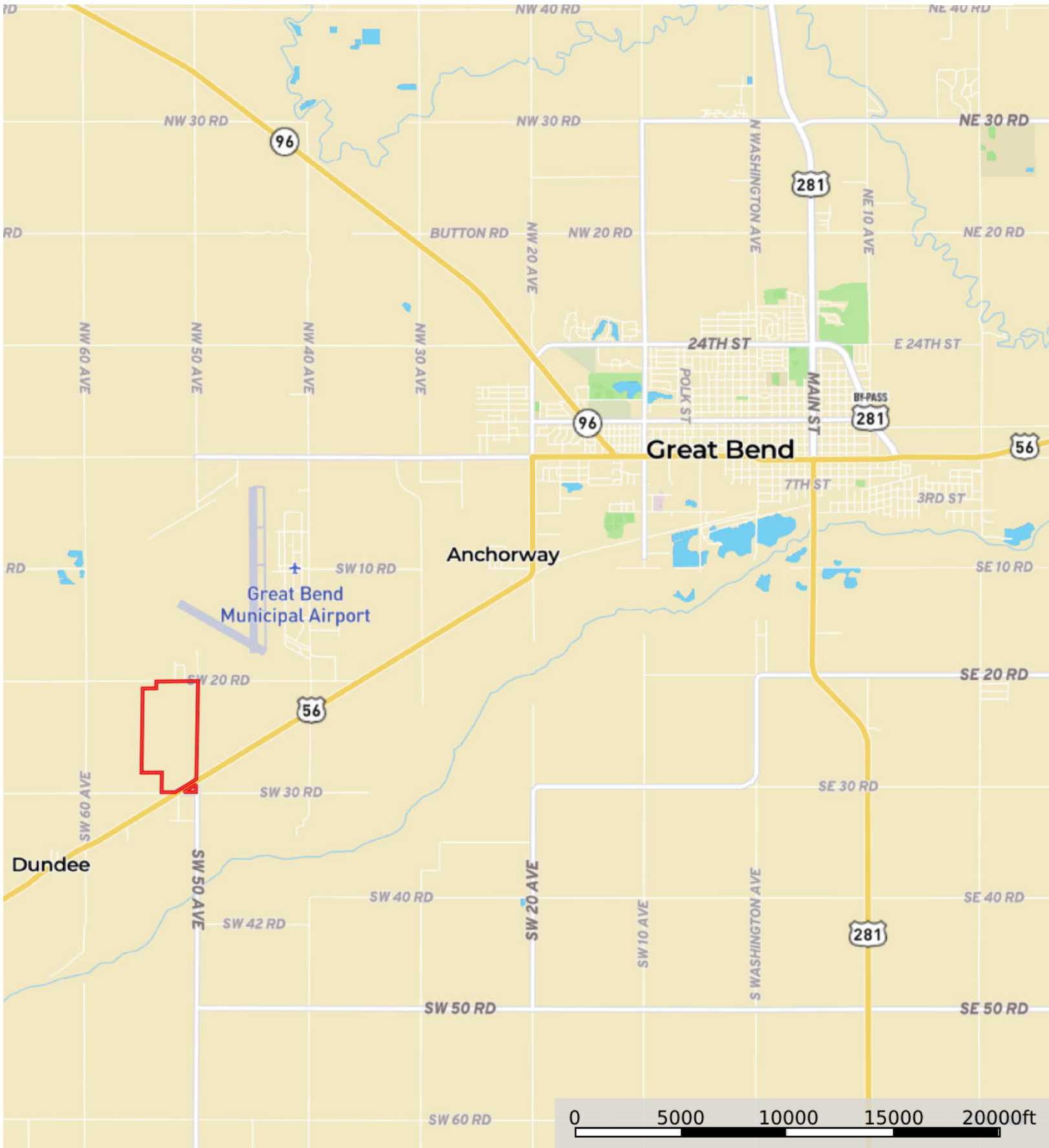

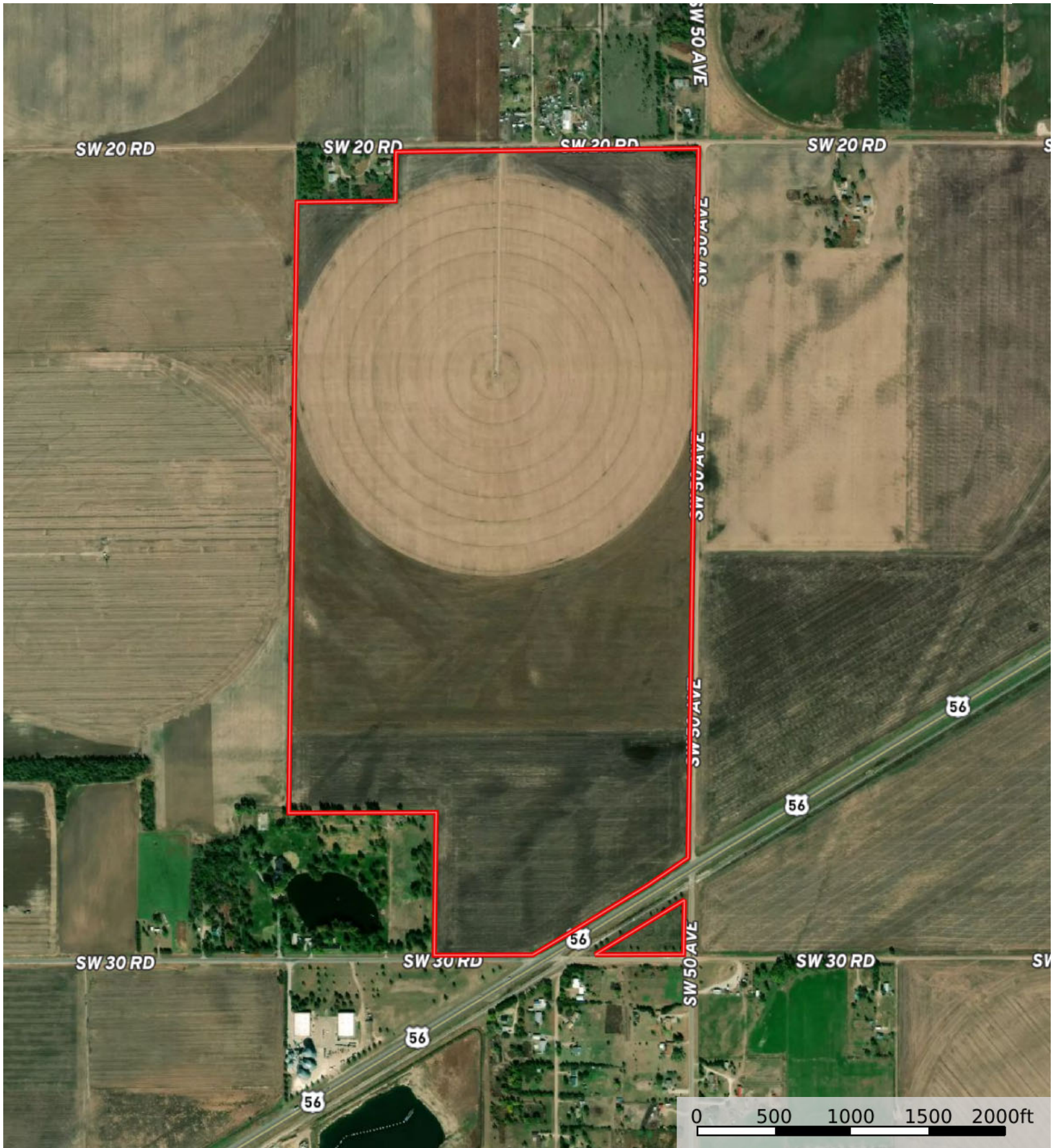



Turner Farms, LLC.

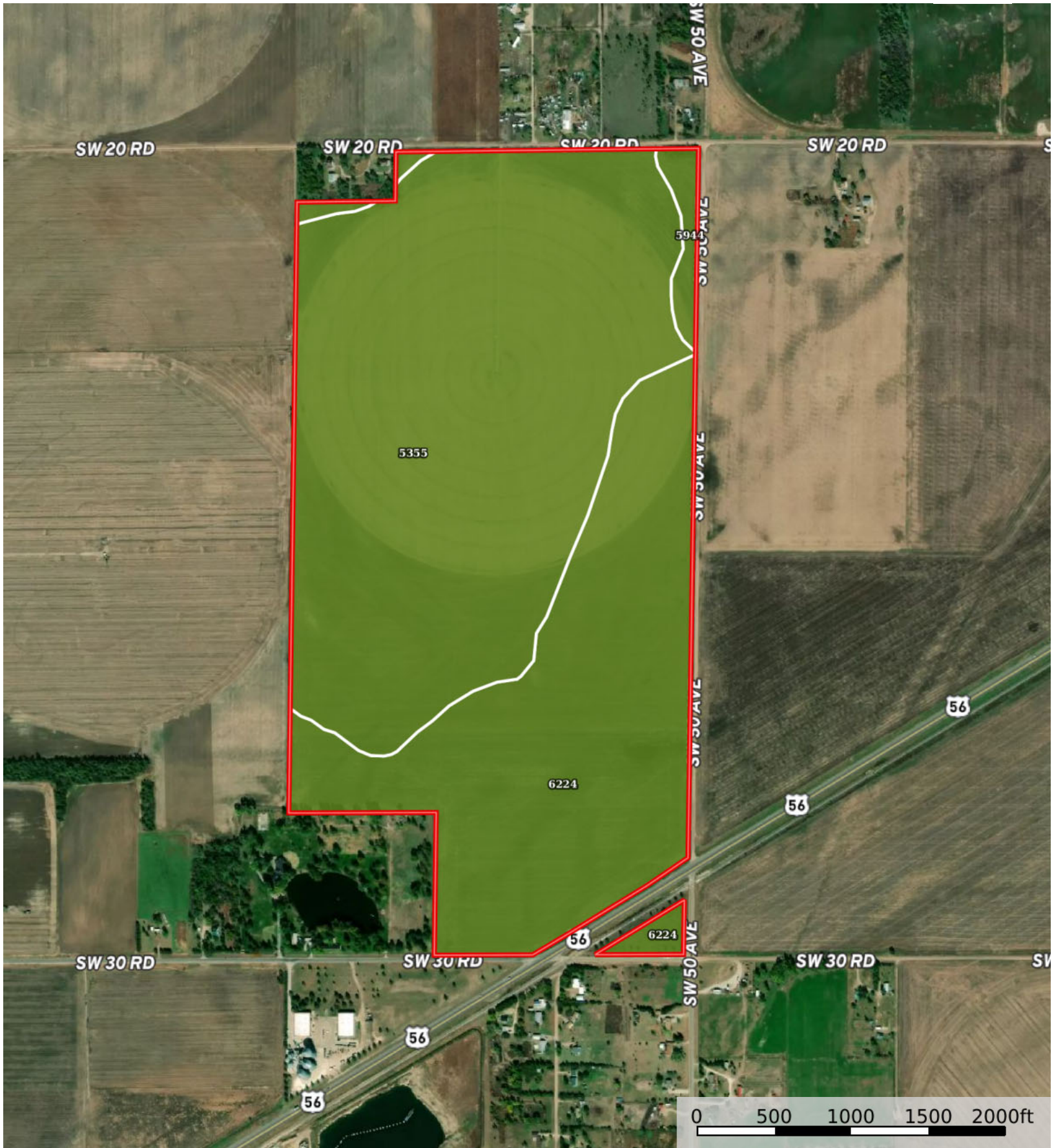
Barton County, Kansas, 283 AC +/-




 Boundary



 Boundary



 Boundary

|  All Polygons 283.67 ac

SOIL CODE	SOIL DESCRIPTION	ACRES	%	CPI	NCCPI	CAP
5355	Kaski loam, rarely flooded	170.76	60.2	0	76	2w
6224	Canadian fine sandy loam, rarely flooded	106.86	37.67	0	51	2c
5944	Saltcreek and Naron fine sandy loams, 1 to 3 percent slopes	6.05	2.13	0	57	2e
TOTALS		283.67(*)	100%	-	66.18	2.0

(*) Total acres may differ in the second decimal compared to the sum of each acreage soil. This is due to a round error because we only show the acres of each soil with two decimal.

|  Boundary 281.33 ac

SOIL CODE	SOIL DESCRIPTION	ACRES	%	CPI	NCCPI	CAP
5355	Kaski loam, rarely flooded	170.76	60.7	0	76	2w
6224	Canadian fine sandy loam, rarely flooded	104.52	37.15	0	51	2c
5944	Saltcreek and Naron fine sandy loams, 1 to 3 percent slopes	6.05	2.15	0	57	2e
TOTALS		281.33(*)	100%	-	66.3	2.0

(*) Total acres may differ in the second decimal compared to the sum of each acreage soil. This is due to a round error because we only show the acres of each soil with two decimal.

|  Boundary 2.34 ac

SOIL CODE	SOIL DESCRIPTION	ACRES	%	CPI	NCCPI	CAP
6224	Canadian fine sandy loam, rarely flooded	2.34	100	0	51	2c
TOTALS		2.34(*)	100%	-	51.0	2









(*) Total acres may differ in the second decimal compared to the sum of each acreage soil. This is due to a round error because we only show the acres of each soil with two decimal.

Capability Legend

Increased Limitations and Hazards

Decreased Adaptability and Freedom of Choice Users

Land, Capability

								
	1	2	3	4	5	6	7	8
'Wild Life'	•	•	•	•	•	•	•	•
Forestry	•	•	•	•	•	•	•	
Limited	•	•	•	•	•	•	•	
Moderate	•	•	•	•	•	•		
Intense	•	•	•	•	•			
Limited	•	•	•	•				
Moderate	•	•	•					
Intense	•	•						
Very Intense	•							

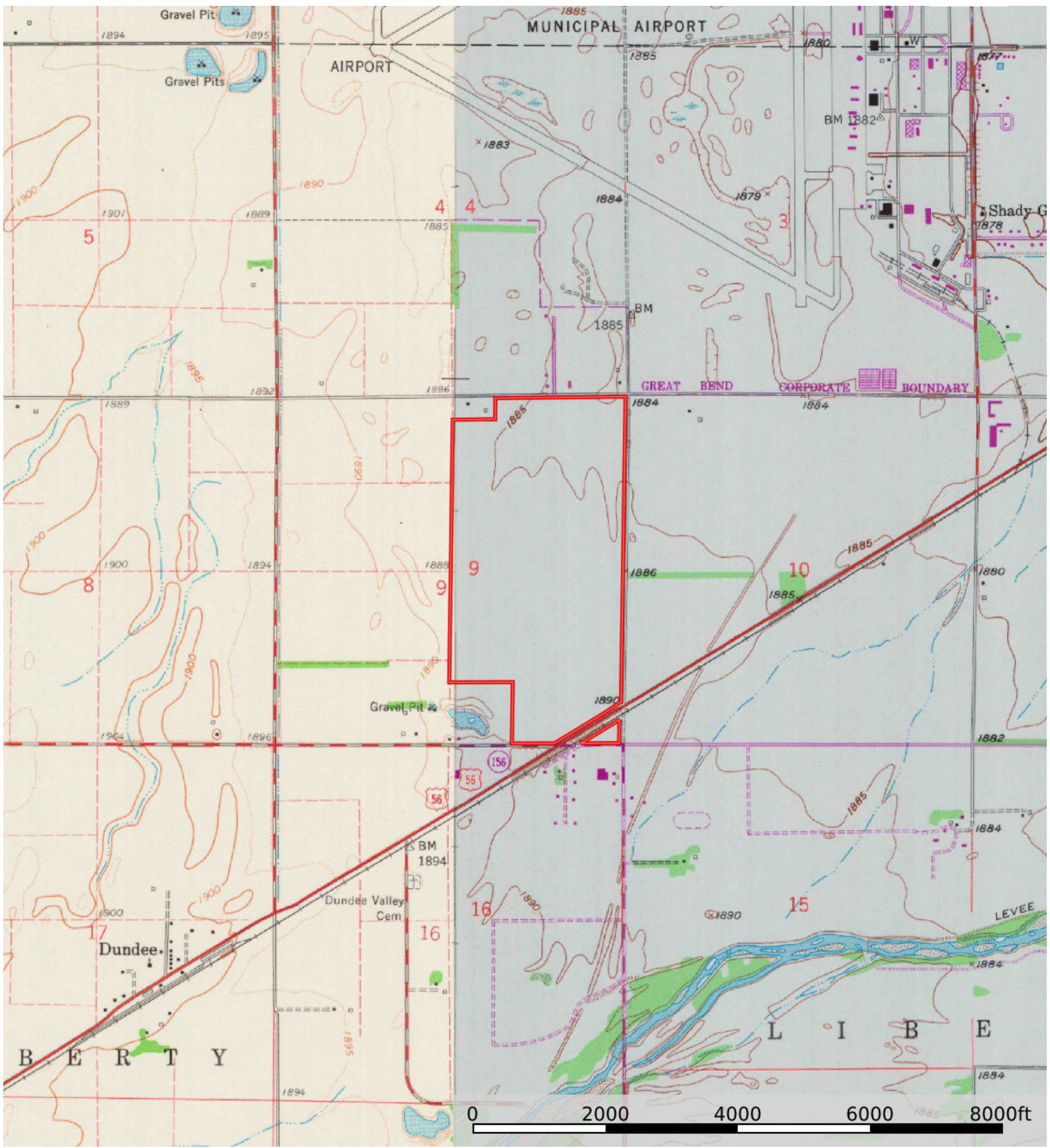
Grazing Cultivation

(c) climatic limitations (e) susceptibility to erosion

(s) soil limitations within the rooting zone (w) excess of water

Turner Farms, LLC.

Barton County, Kansas, 283 AC +/-



 Boundary