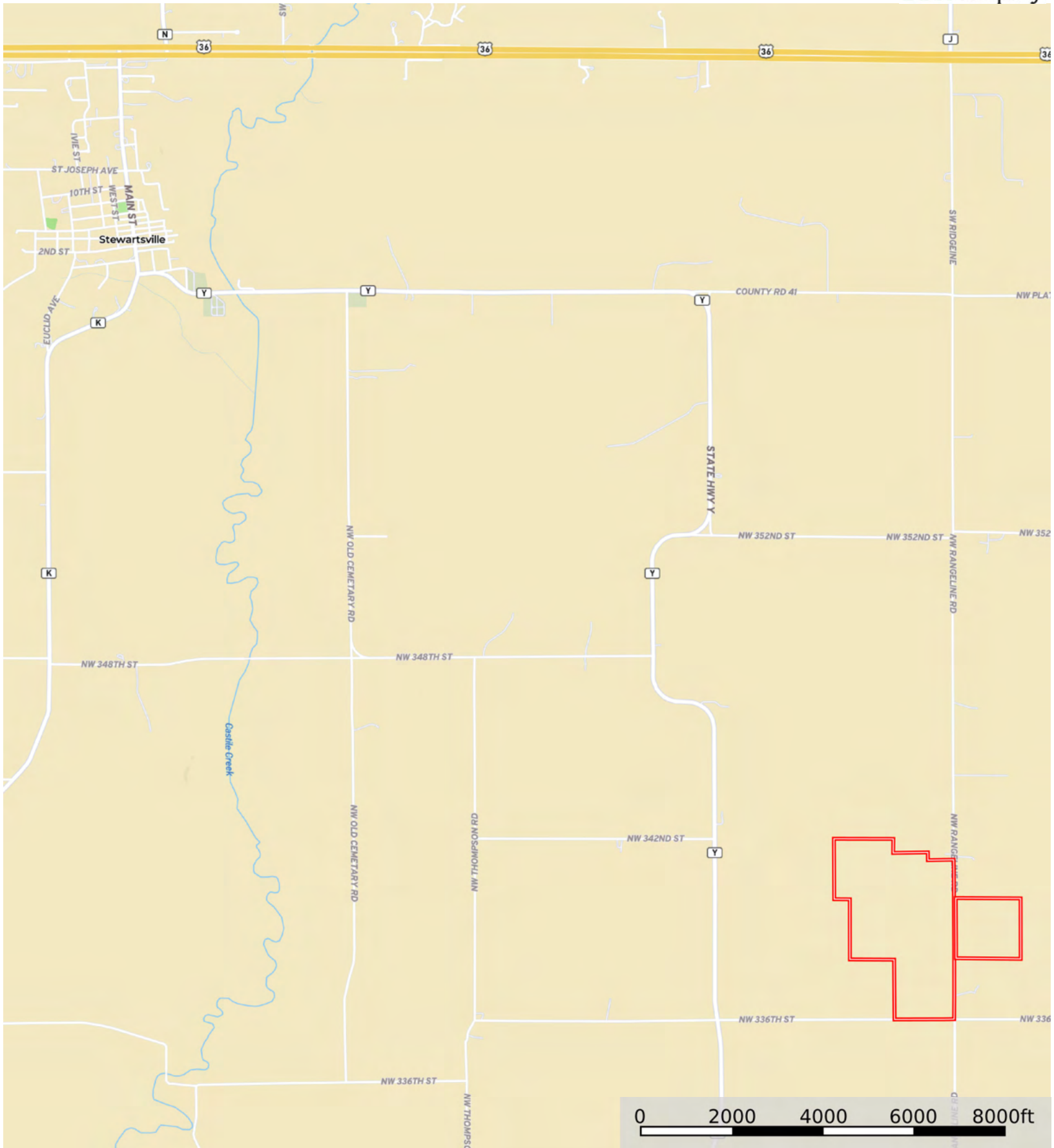


L-2500210

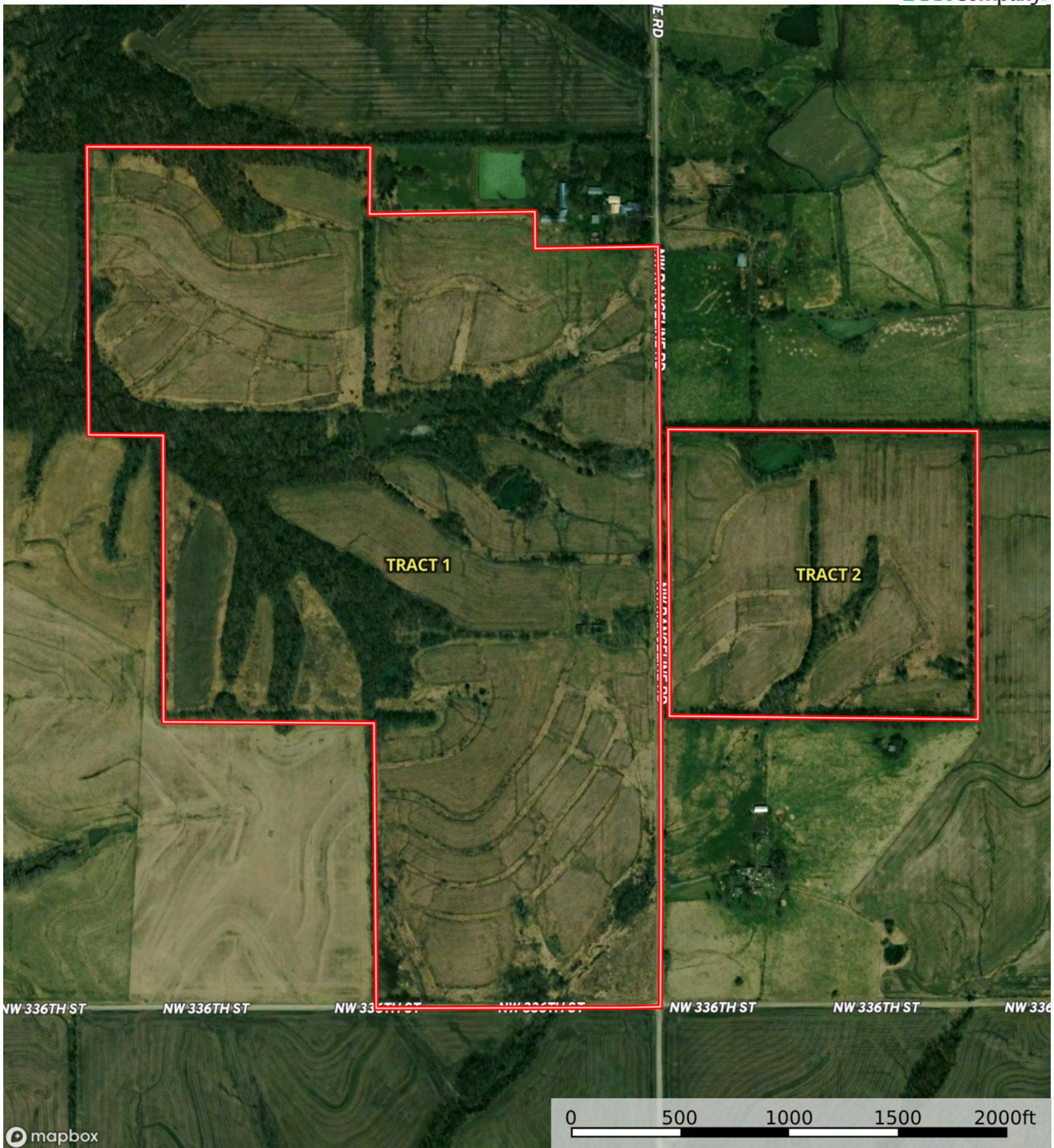
Clinton County, Missouri, 217 AC +/-



 Boundary

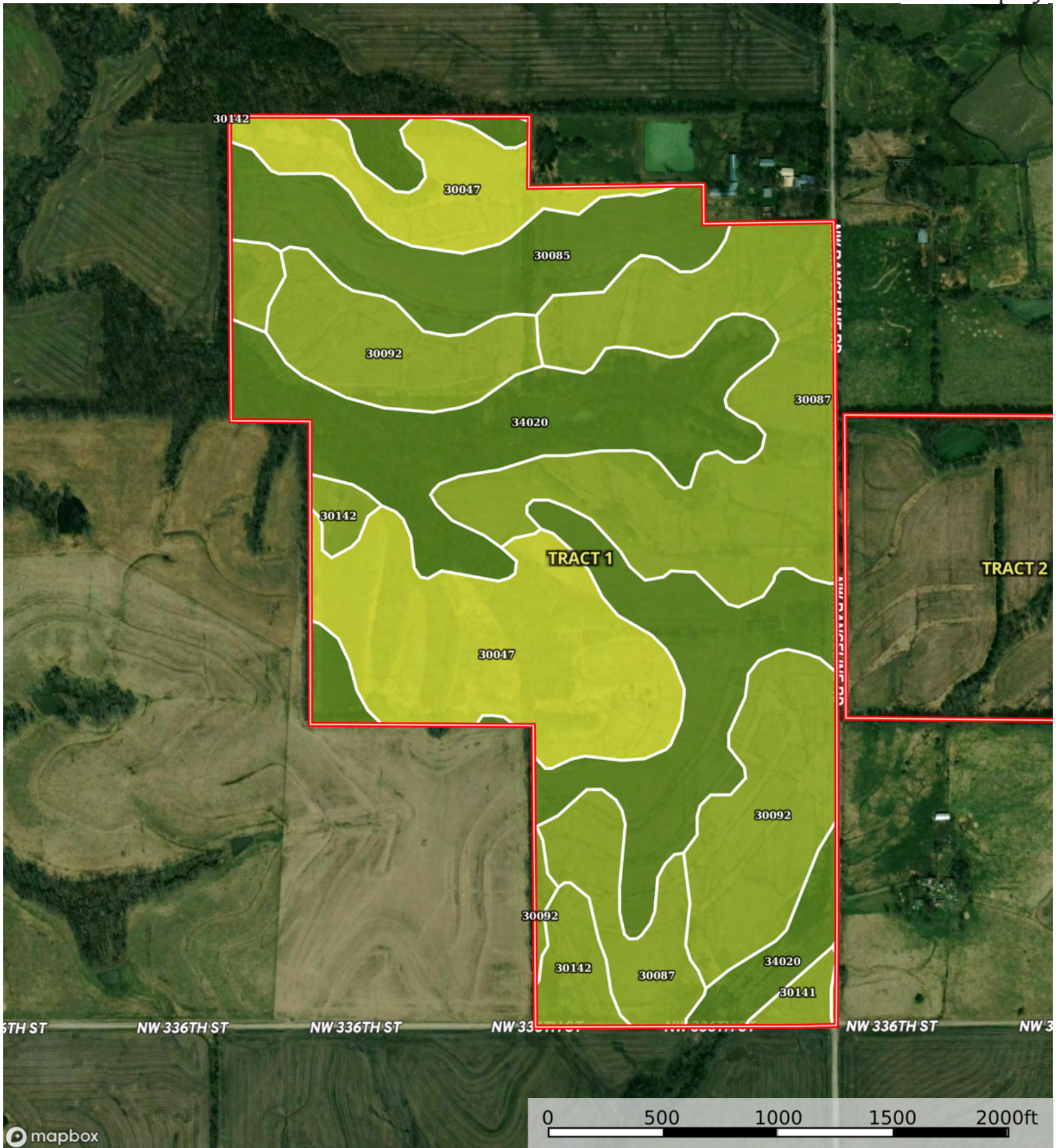
L-2500210

Clinton County, Missouri, 217 AC +/-



mapbox

Boundary



 Boundary

Boundary 178.58 ac

SOIL CODE	SOIL DESCRIPTION	ACRES	%	CPI	NCCPI	CAP
30087	Grundy silt loam, 5 to 9 percent slopes	40.06	22.43	0	66	3e
30085	Grundy silt loam, 2 to 5 percent slopes	37.04	20.74	0	74	2e
30047	Clarinda silty clay loam, 5 to 9 percent slopes, moderately eroded	36.33	20.34	0	52	4w
34020	Colo silty clay loam, drainageway, 2 to 5 percent slopes, frequently flooded	30.71	17.2	0	82	2w
30092	Grundy silty clay loam, 5 to 9 percent slopes, moderately eroded	25.88	14.49	0	74	3e
30142	Lamoni silty clay loam, 5 to 9 percent slopes, moderately eroded	6.99	3.91	0	60	3e
30141	Lamoni silty clay loam, 5 to 9 percent slopes	1.57	0.88	0	71	3e
TOTALS		178.58(*)	100%	-	68.53	2.82

(*) Total acres may differ in the second decimal compared to the sum of each acreage soil. This is due to a round error because we only show the acres of each soil with two decimal.

Capability Legend

Increased Limitations and Hazards

Decreased Adaptability and Freedom of Choice Users

Land, Capability


	1	2	3	4	5	6	7	8
'Wild Life'	•	•	•	•	•	•	•	•
Forestry	•	•	•	•	•	•	•	
Limited	•	•	•	•	•	•	•	
Moderate	•	•	•	•	•	•		
Intense	•	•	•	•	•			
Limited	•	•	•	•				
Moderate	•	•	•					
Intense	•	•						
Very Intense	•							

Grazing Cultivation

(c) climatic limitations (e) susceptibility to erosion

(s) soil limitations within the rooting zone (w) excess of water



 Boundary

|  Boundary 43.35 ac

SOIL CODE	SOIL DESCRIPTION	ACRES	%	CPI	NCCPI	CAP
30085	Grundy silt loam, 2 to 5 percent slopes	19.26	44.43	0	74	2e
30091	Grundy silty clay loam, 2 to 5 percent slopes, moderately eroded	11.69	26.97	0	74	2e
30087	Grundy silt loam, 5 to 9 percent slopes	11.52	26.57	0	66	3e
34020	Colo silty clay loam, drainageway, 2 to 5 percent slopes, frequently flooded	0.81	1.87	0	82	2w
30092	Grundy silty clay loam, 5 to 9 percent slopes, moderately eroded	0.07	0.16	0	74	3e
TOTALS		43.35(*)	100%	-	72.02	2.27









(*) Total acres may differ in the second decimal compared to the sum of each acreage soil. This is due to a round error because we only show the acres of each soil with two decimal.

Capability Legend

Increased Limitations and Hazards

Decreased Adaptability and Freedom of Choice Users

Land, Capability

								
	1	2	3	4	5	6	7	8
'Wild Life'	•	•	•	•	•	•	•	•
Forestry	•	•	•	•	•	•	•	
Limited	•	•	•	•	•	•	•	
Moderate	•	•	•	•	•	•		
Intense	•	•	•	•	•			
Limited	•	•	•	•				
Moderate	•	•	•					
Intense	•	•						
Very Intense	•							

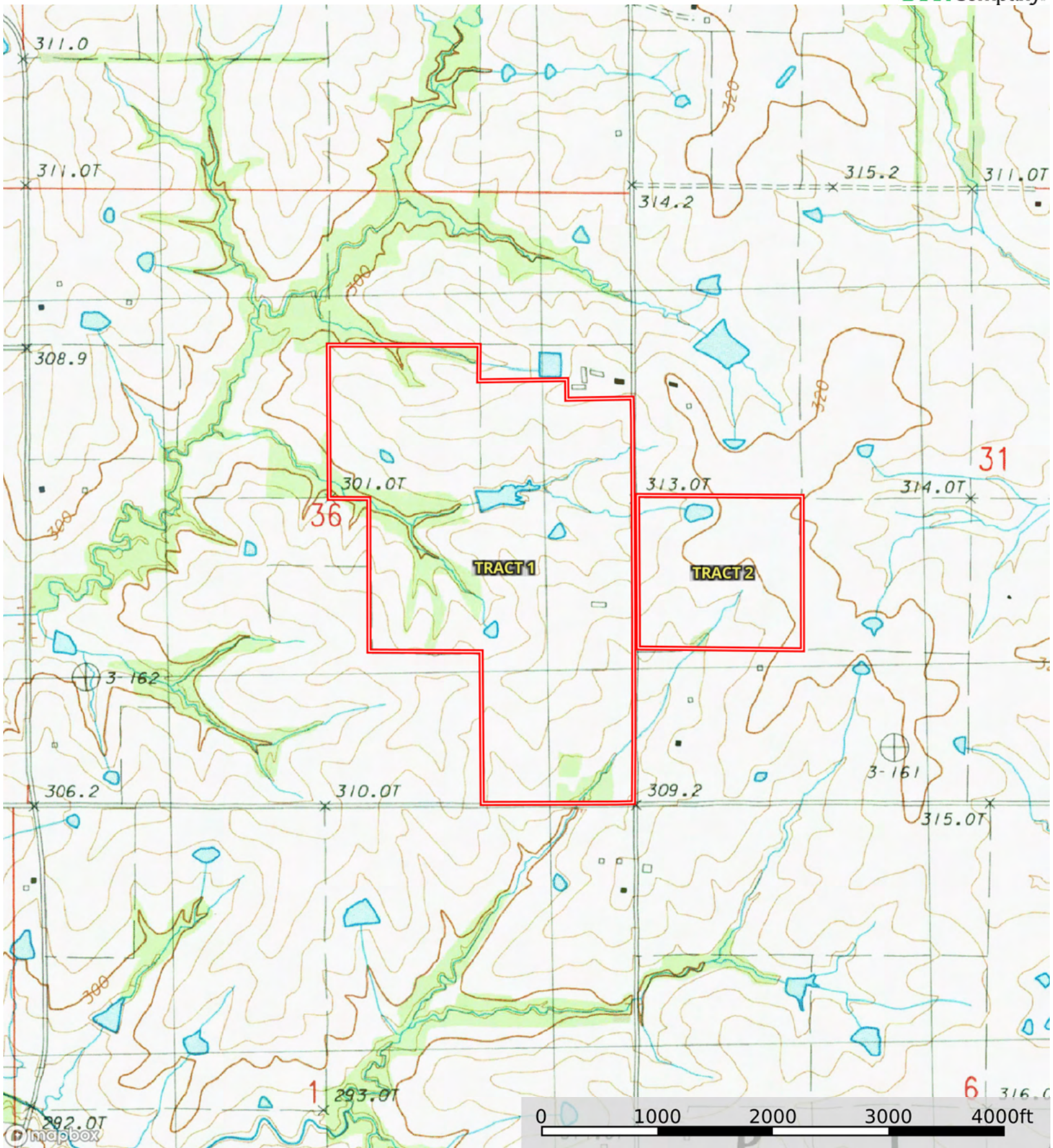
Grazing Cultivation

(c) climatic limitations (e) susceptibility to erosion

(s) soil limitations within the rooting zone (w) excess of water

L-2500210

Clinton County, Missouri, 217 AC +/-



Boundary