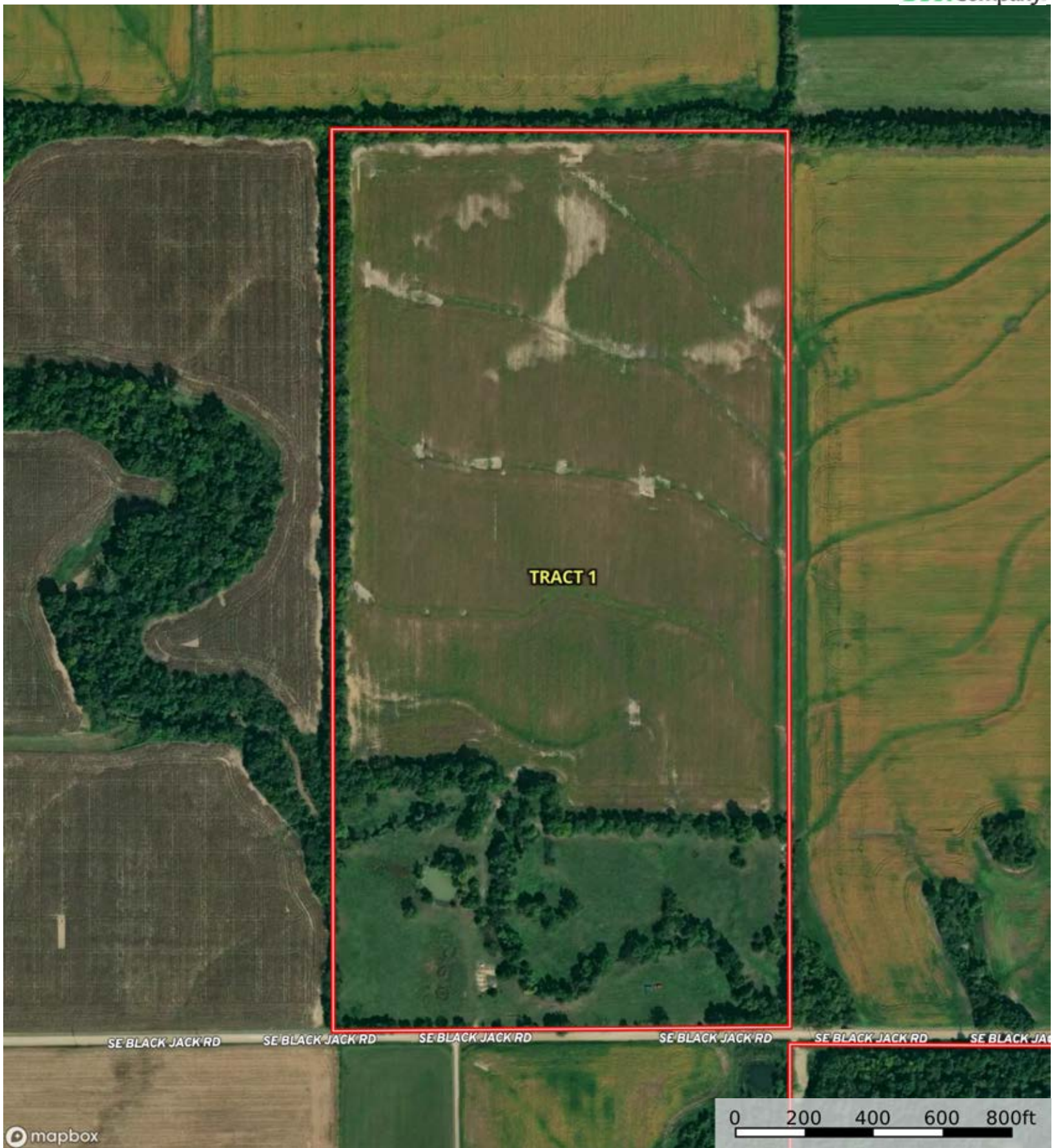

 Boundary



 Boundary



Boundary

|  Boundary 79.64 ac

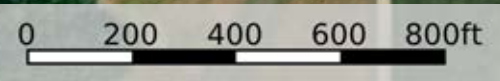
SOIL CODE	SOIL DESCRIPTION	ACRES	%	CPI	NCCPI	CAP
8927	Taloka silt loam, 0 to 1 percent slopes	45.4	57.01	0	60	3s
8679	Dennis silt loam, 1 to 3 percent slopes	24.52	30.79	0	81	2e
8100	Hepler silt loam, 0 to 3 percent slopes, frequently flooded	9.72	12.2	0	74	5w
TOTALS		79.64(*)	100%	-	68.17	2.94

(*) Total acres may differ in the second decimal compared to the sum of each acreage soil. This is due to a round error because we only show the acres of each soil with two decimal.






mapbox



Boundary



 Boundary


|  Boundary 159.63 ac

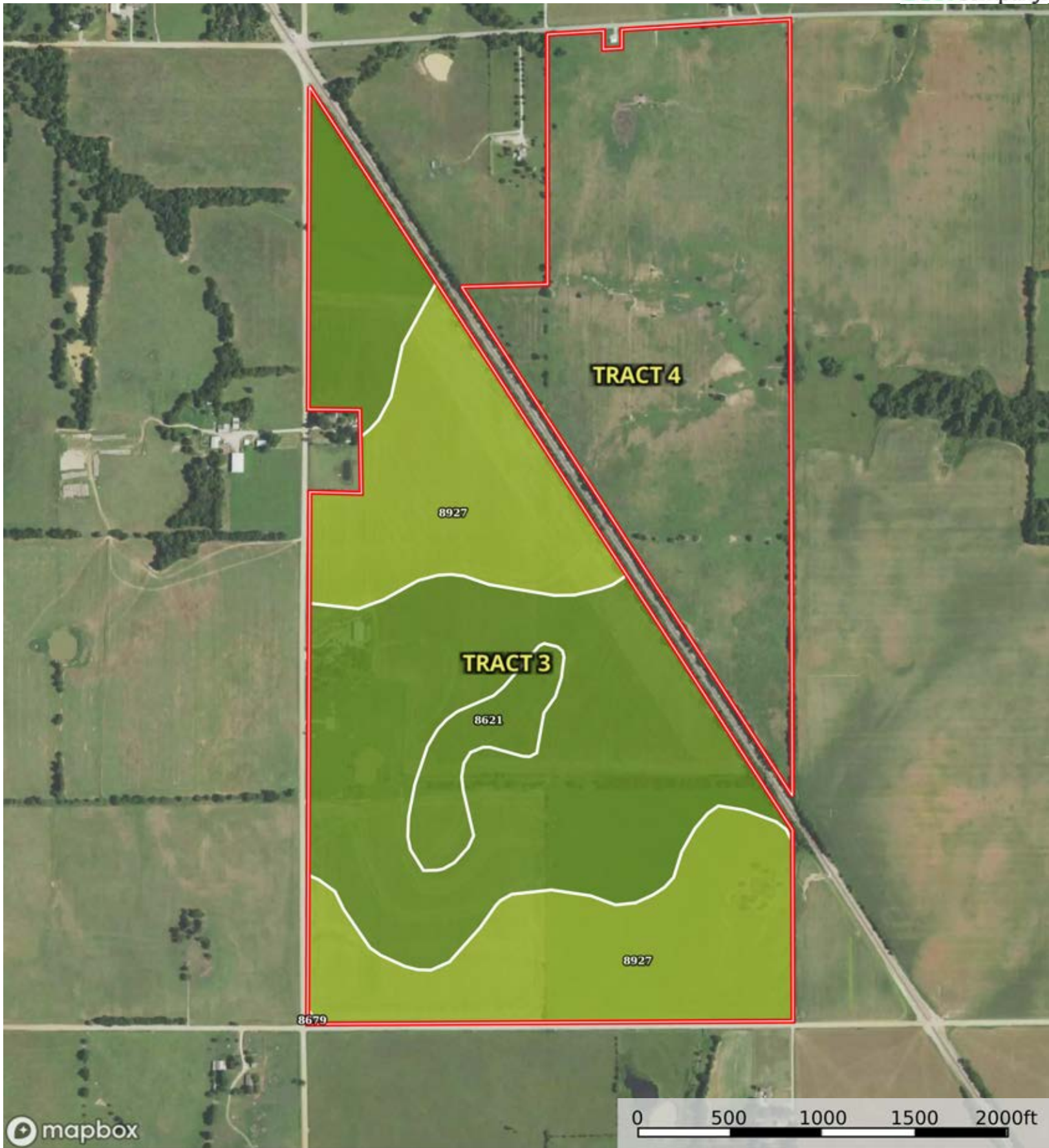
SOIL CODE	SOIL DESCRIPTION	ACRES	%	CPI	NCCPI	CAP
8679	Dennis silt loam, 1 to 3 percent slopes	68.08	42.65	0	81	2e
8927	Taloka silt loam, 0 to 1 percent slopes	54.56	34.18	0	60	3s
8100	Hepler silt loam, 0 to 3 percent slopes, frequently flooded	28.57	17.9	0	74	5w
8621	Bates loam, 1 to 3 percent slopes	6.3	3.95	0	66	2e
8623	Bates loam, 3 to 7 percent slopes	2.12	1.33	0	63	3e
TOTALS		159.6 3(*)	100%	-	71.75	2.89


(*) Total acres may differ in the second decimal compared to the sum of each acreage soil. This is due to a round error because we only show the acres of each soil with two decimal.





 Boundary



 Boundary


|  Boundary 181.69 ac

SOIL CODE	SOIL DESCRIPTION	ACRES	%	CPI	NCCPI	CAP
8679	Dennis silt loam, 1 to 3 percent slopes	94.49	52.01	0	81	2e
8927	Taloka silt loam, 0 to 1 percent slopes	78.05	42.96	0	60	3s
8621	Bates loam, 1 to 3 percent slopes	9.15	5.04	0	66	2e
TOTALS		181.69(*)	100%	-	71.23	2.43

(*) Total acres may differ in the second decimal compared to the sum of each acreage soil. This is due to a round error because we only show the acres of each soil with two decimal.





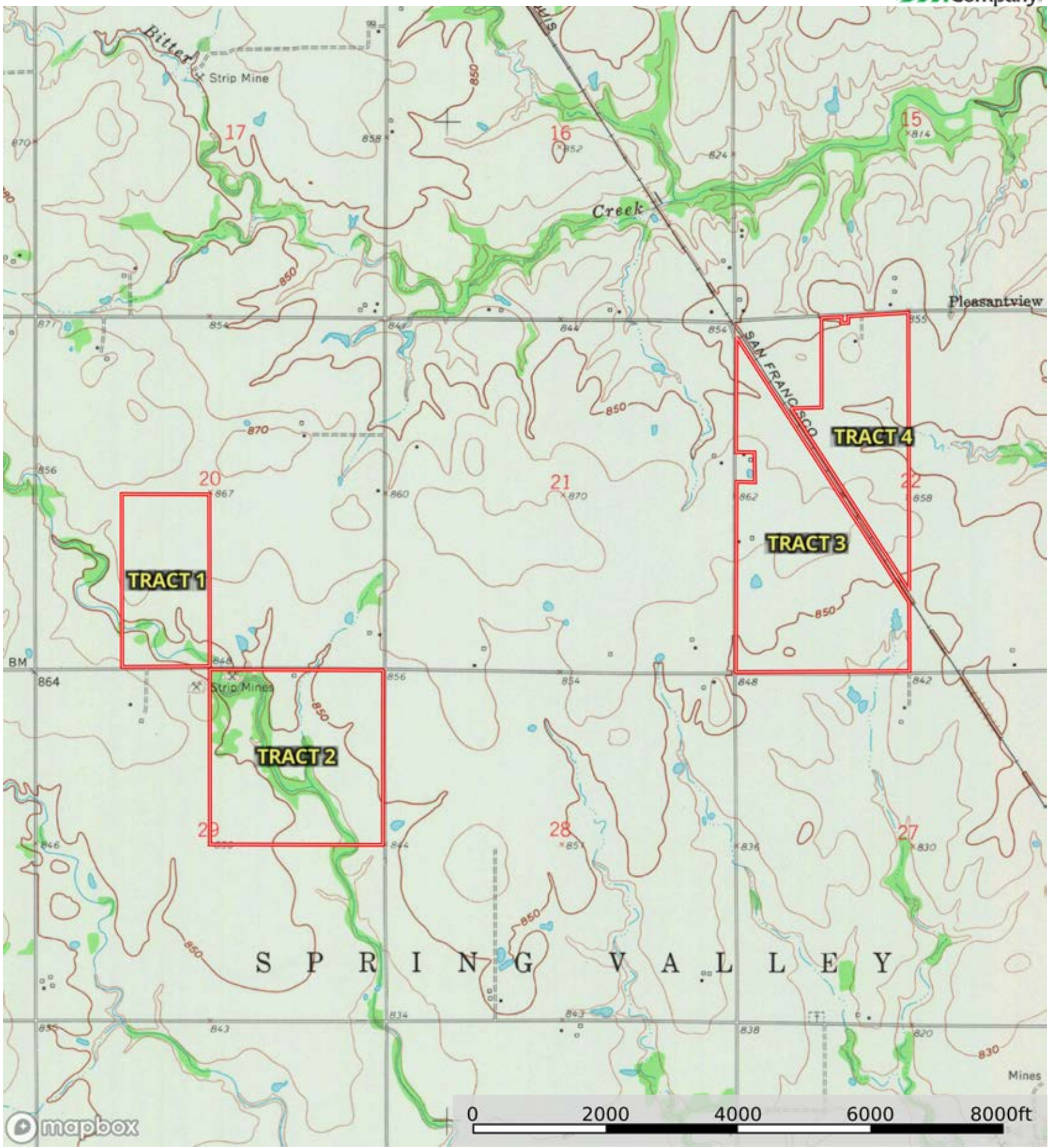
 Boundary

|  Boundary 99.03 ac

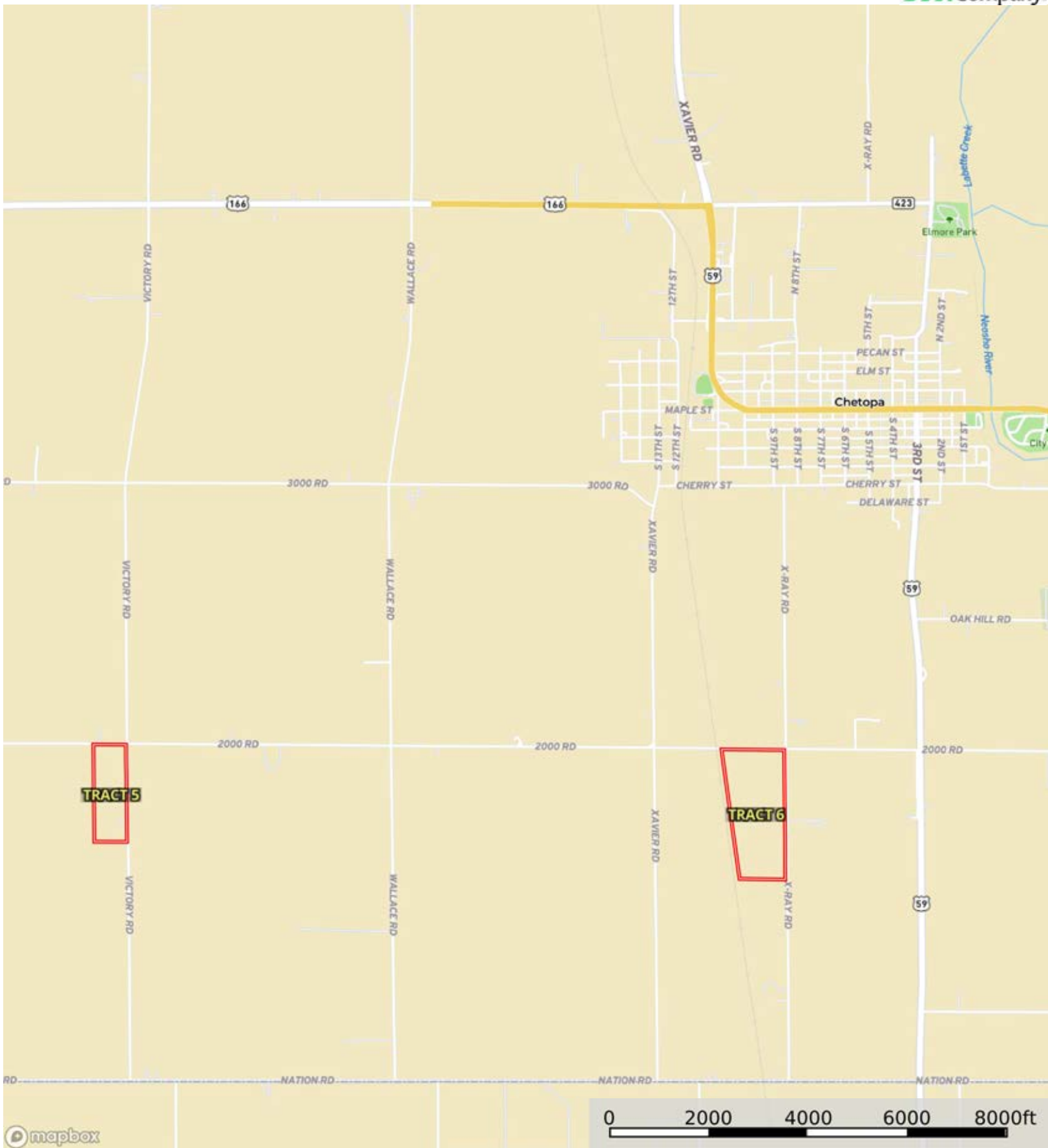
SOIL CODE	SOIL DESCRIPTION	ACRES	%	CPI	NCCPI	CAP
8927	Taloka silt loam, 0 to 1 percent slopes	60.1	60.69	0	60	3s
8679	Dennis silt loam, 1 to 3 percent slopes	23.57	23.8	0	81	2e
8621	Bates loam, 1 to 3 percent slopes	8.11	8.19	0	66	2e
8100	Hepler silt loam, 0 to 3 percent slopes, frequently flooded	7.25	7.32	0	74	5w
TOTALS		99.03(*)	100%	-	66.52	2.83


(*) Total acres may differ in the second decimal compared to the sum of each acreage soil. This is due to a round error because we only show the acres of each soil with two decimal.

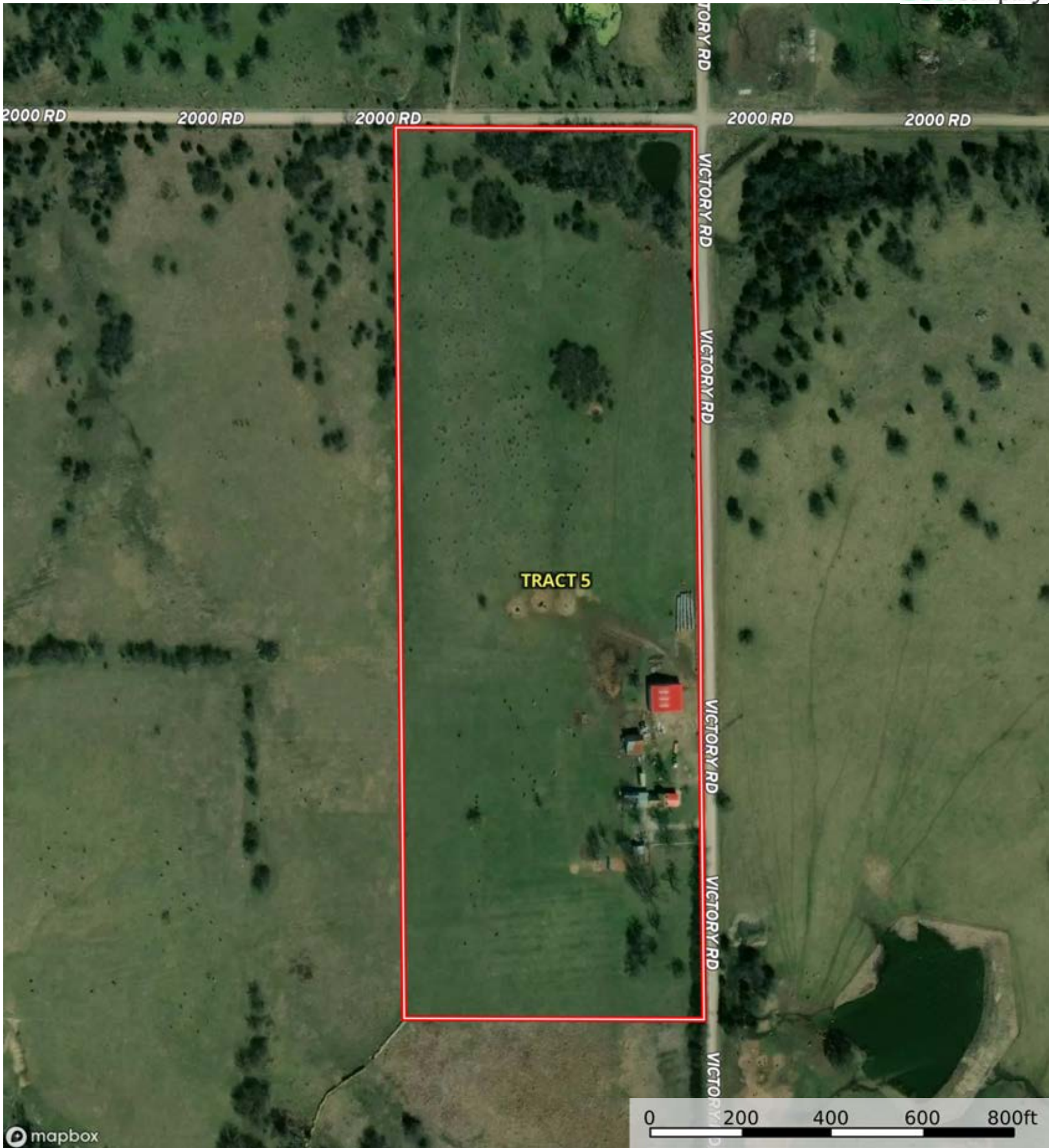




 Boundary



 Boundary



mapbox

Boundary



mapbox

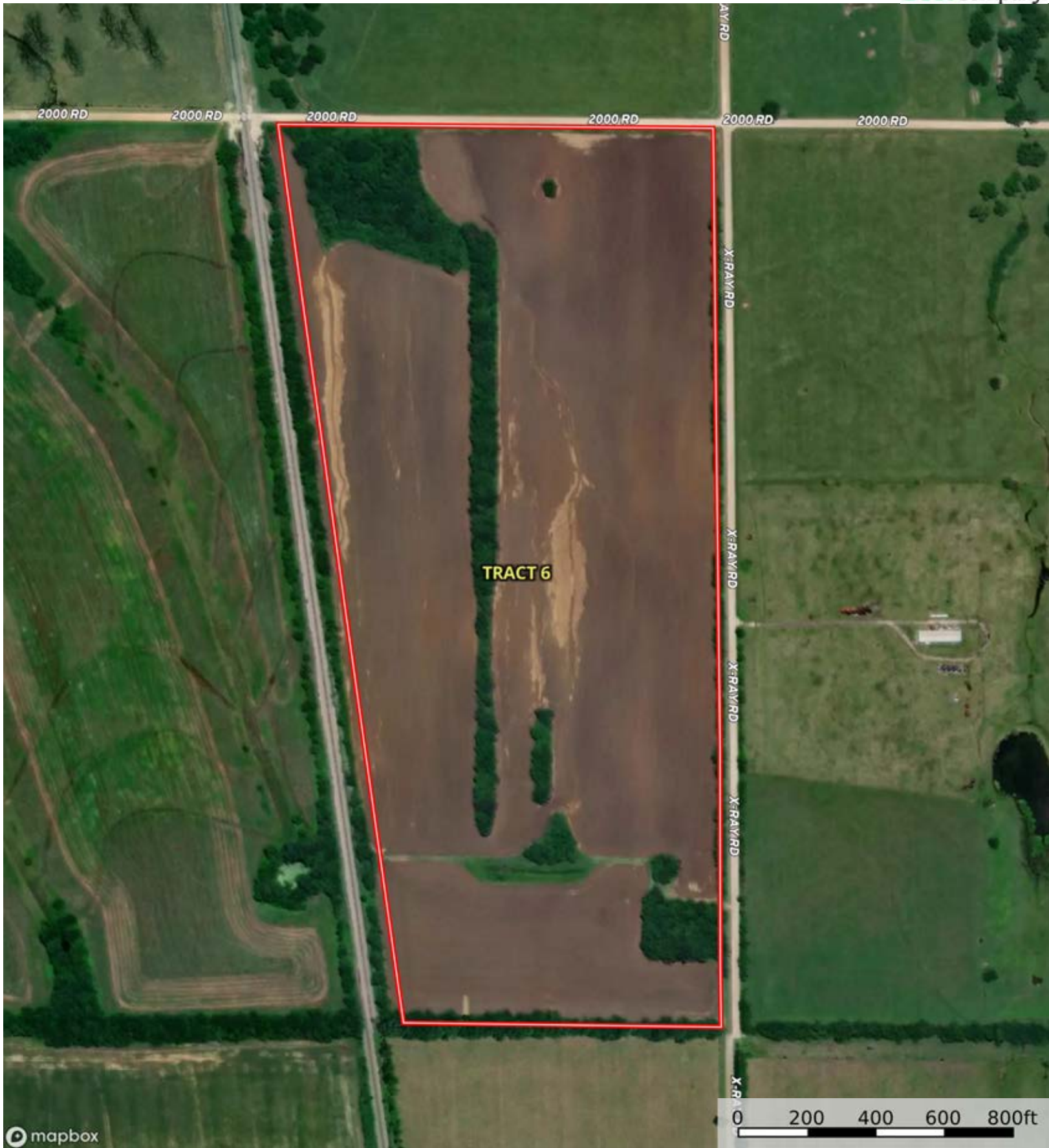
Boundary

|  Boundary 29.81 ac

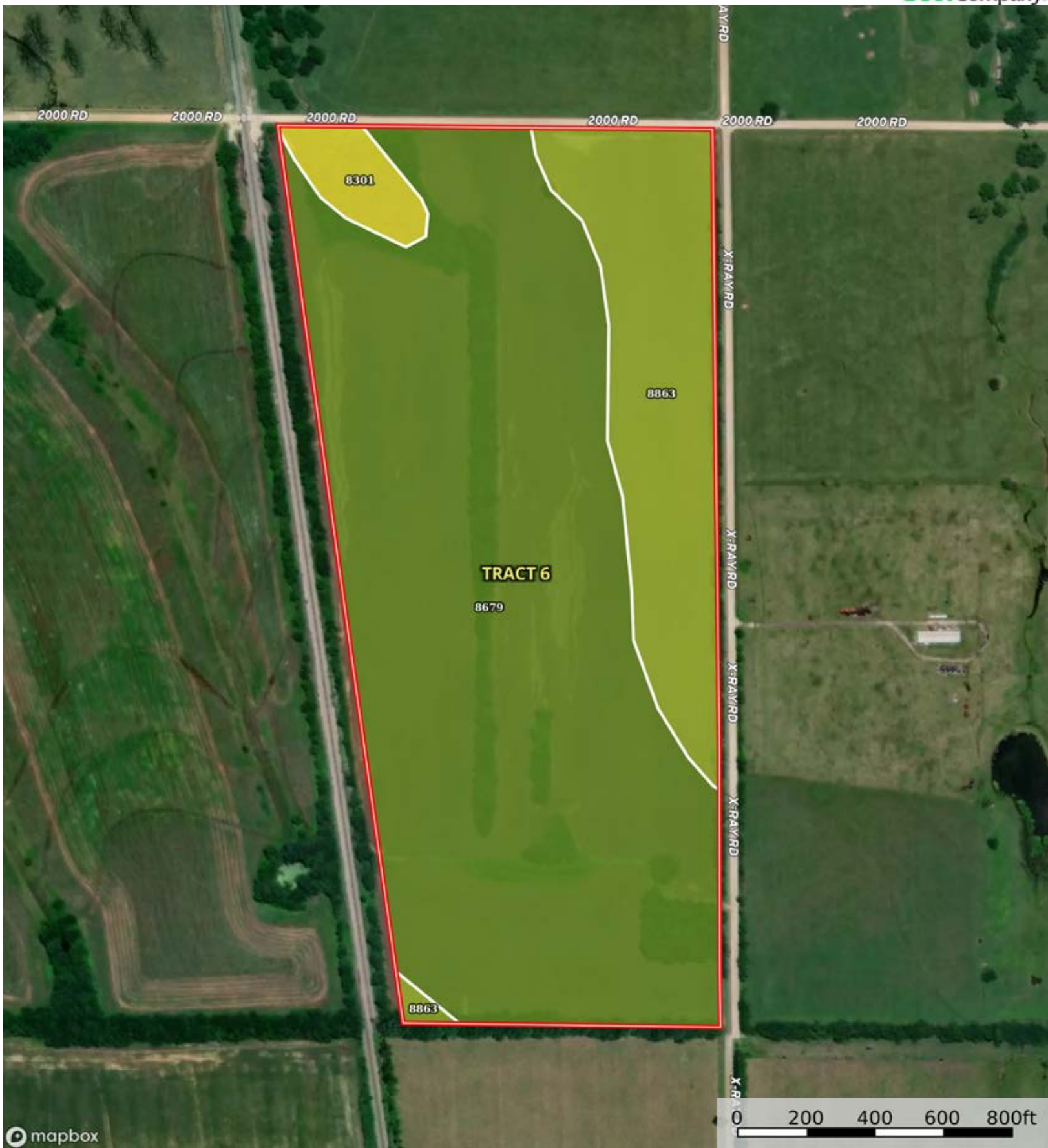
SOIL CODE	SOIL DESCRIPTION	ACRES	%	CPI	NCCPI	CAP
8957	Wagstaff-Shidler complex, 1 to 8 percent slopes	20.86	69.98	0	37	3e
8610	Apperson silty clay loam, 1 to 3 percent slopes	8.95	30.02	0	49	3e
TOTALS		29.81(*)	100%	-	40.6	3.0


(*) Total acres may differ in the second decimal compared to the sum of each acreage soil. This is due to a round error because we only show the acres of each soil with two decimal.





Boundary



 Boundary

|  Boundary 65.99 ac

SOIL CODE	SOIL DESCRIPTION	ACRES	%	CPI	NCCPI	CAP
8679	Dennis silt loam, 1 to 3 percent slopes	50.93	77.18	0	81	2e
8863	Parsons silt loam, 0 to 1 percent slopes	13.11	19.87	0	82	3w
8301	Verdigris silt loam, 0 to 1 percent slopes, frequently flooded	1.95	2.95	0	65	5w
TOTALS		65.99(*)	100%	-	80.73	2.29

(*) Total acres may differ in the second decimal compared to the sum of each acreage soil. This is due to a round error because we only show the acres of each soil with two decimal.



