


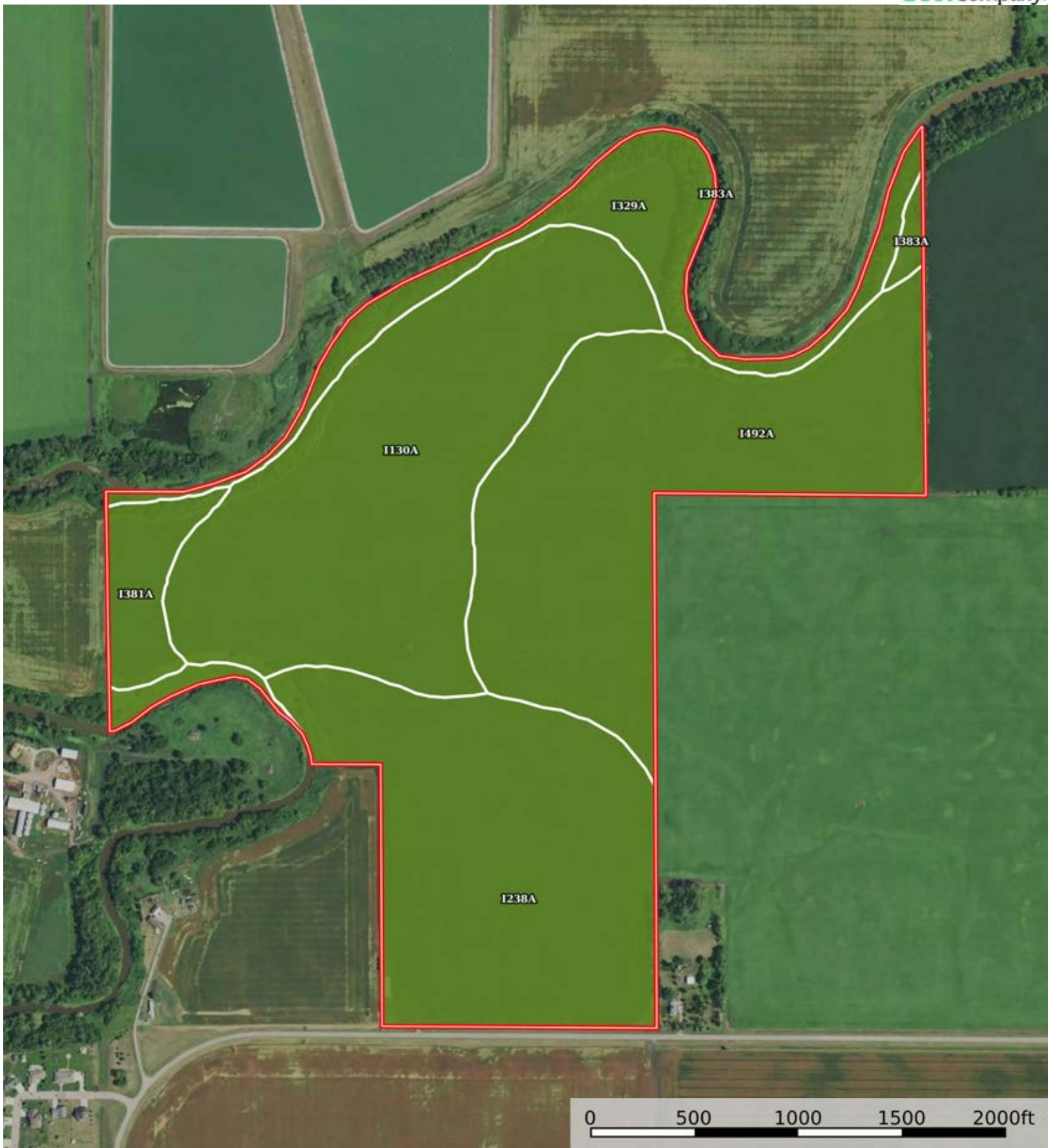
Boundary




 Boundary


L-2400138

Trail County, North Dakota, 187.81 AC +/-



 Boundary

Cris Miller
11516 Nicholas St

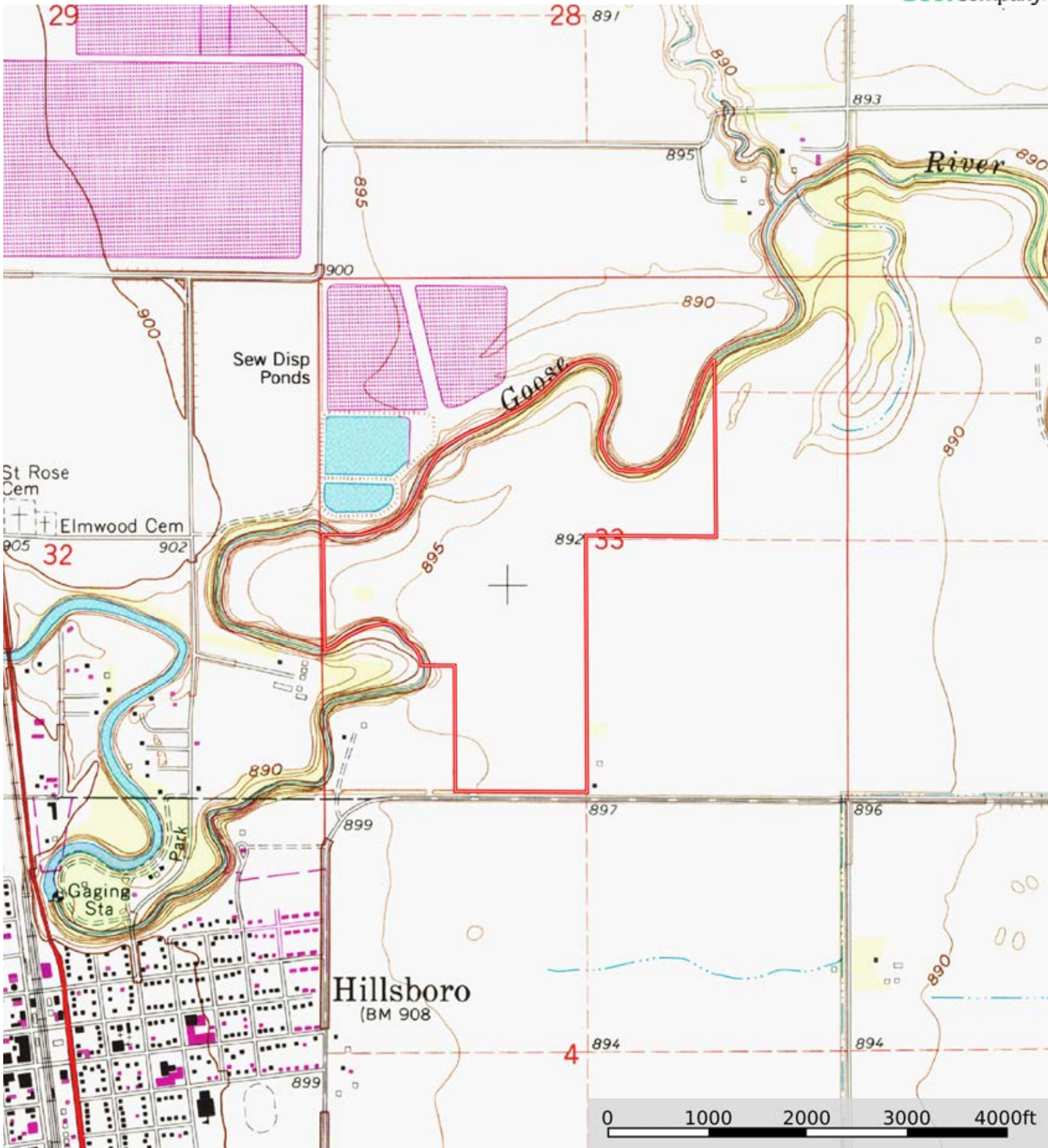
 The information contained herein was obtained from sources deemed to be reliable. Land id™ Services makes no warranties or guarantees as to the completeness or accuracy thereof.

|  Boundary 192.24 ac

SOIL CODE	SOIL DESCRIPTION	ACRES	%	CPI	NCCPI	CAP
I130A	Hegne-Fargo silty clays, 0 to 1 percent slopes	58.16	30.25	83	52	2w
I492A	Bearden-Lindaas silty clay loams, 0 to 2 percent slopes	55.18	28.7	93	61	2e
I238A	Fargo-Hegne silty clays, 0 to 1 percent slopes	51.2	26.63	85	53	2w
I329A	Fairdale silt loam, 0 to 2 percent slopes, occasionally flooded	19.38	10.08	85	69	2c
I381A	LaDelle silty clay loam, 0 to 2 percent slopes, occasionally flooded	7.12	3.7	90	72	2c
I383A	Overly silty clay loam, 0 to 2 percent slopes	1.2	0.62	97	64	2c
TOTALS		192.24(*)	100%	86.95	57.38	2.0

(*) Total acres may differ in the second decimal compared to the sum of each acreage soil. This is due to a round error because we only show the acres of each soil with two decimal.





Boundary