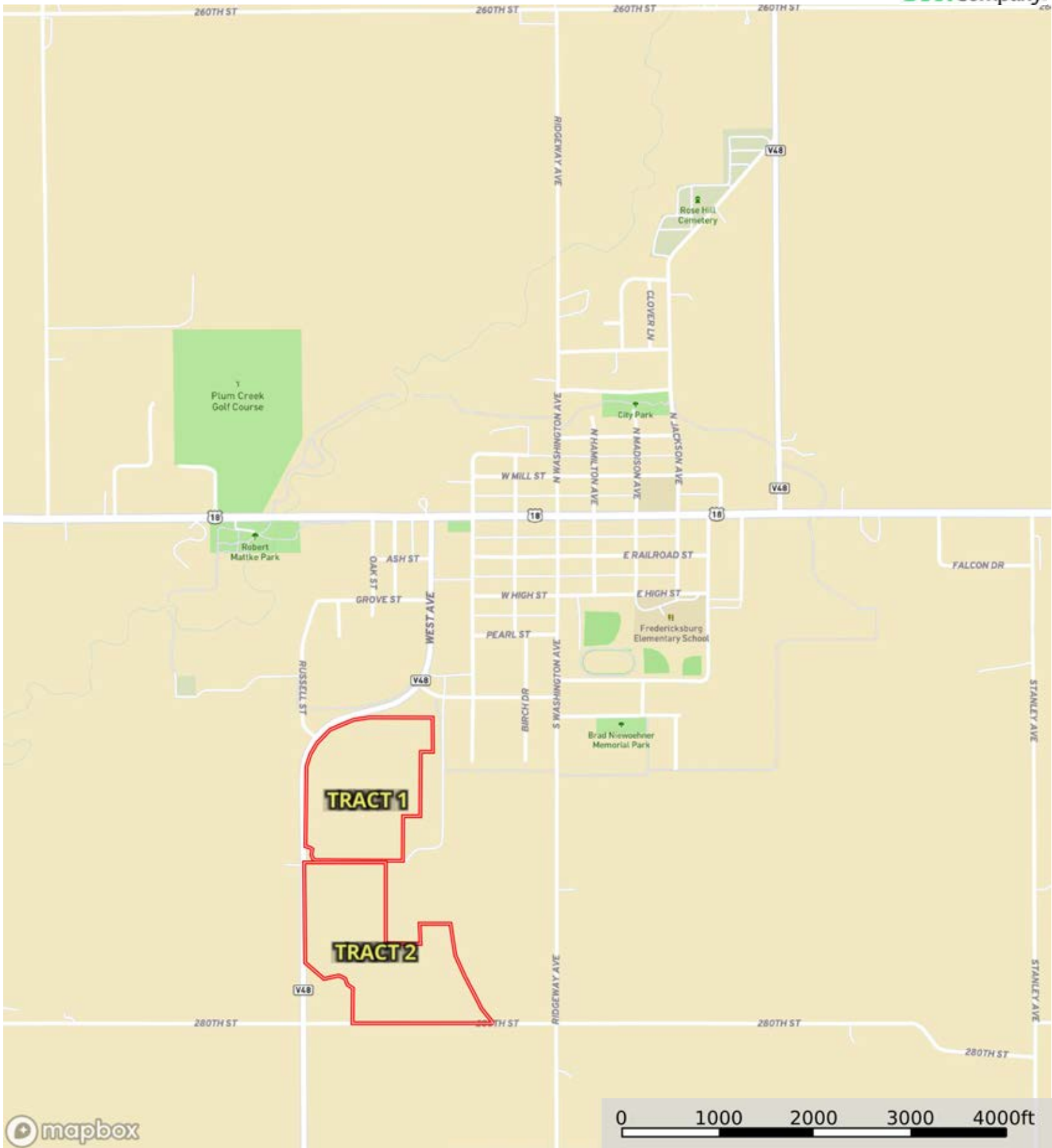


L-2400140

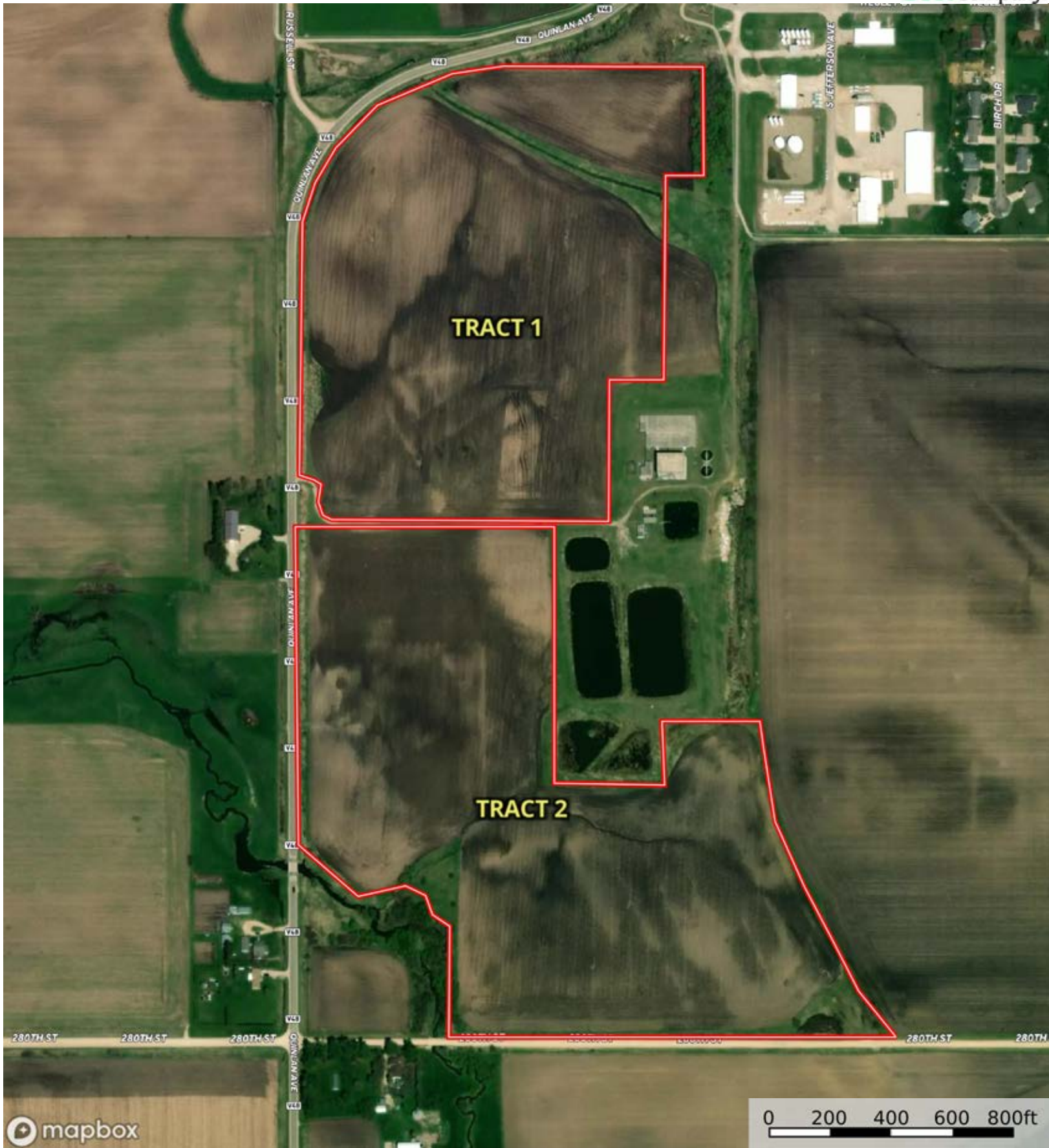
Chickasaw County, Iowa, 81.11 AC +/-



Boundary

L-2400140

Chickasaw County, Iowa, 81.11 AC +/-

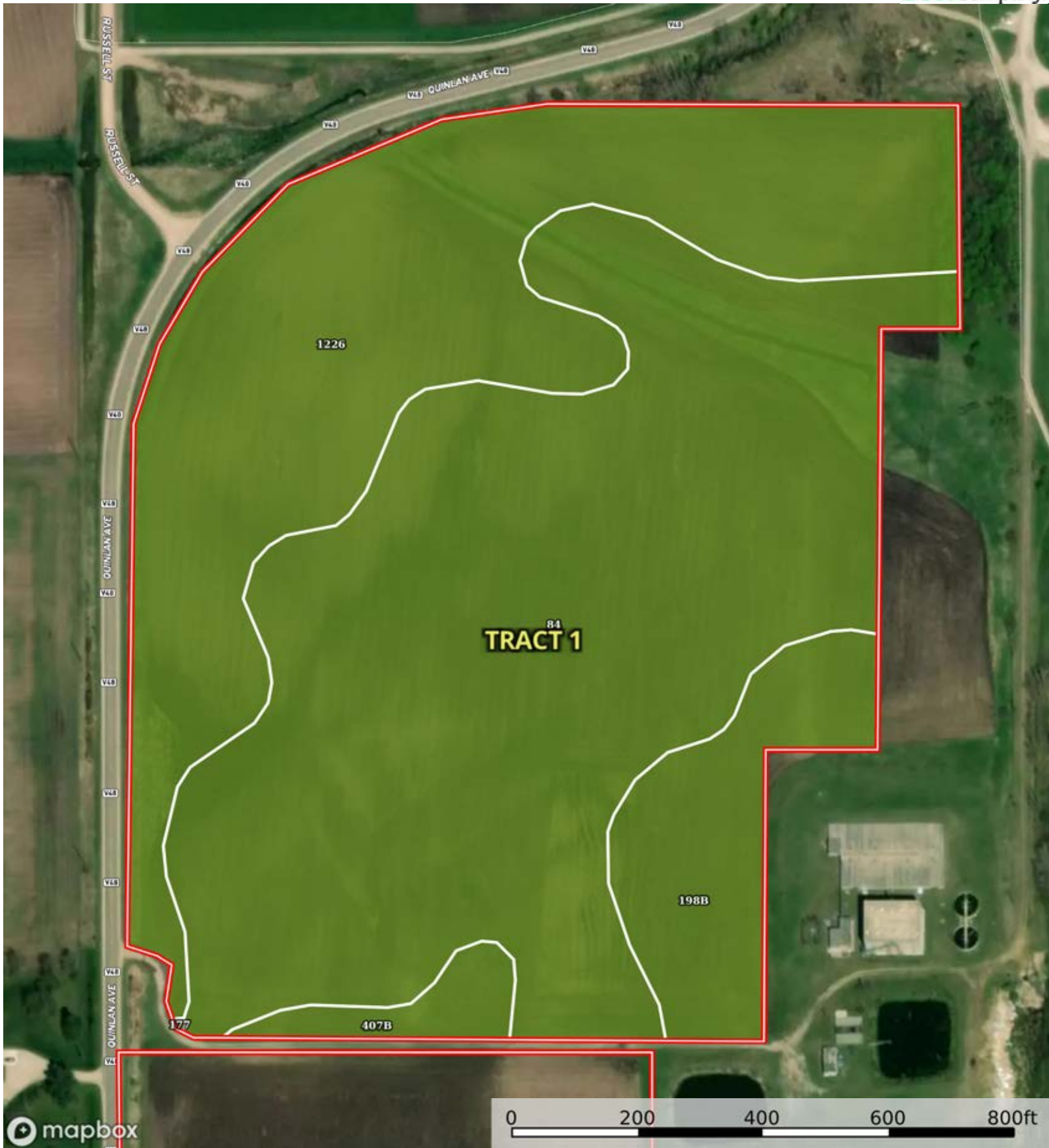



mapbox

Boundary

0 200 400 600 800ft

id. The information contained herein was obtained from sources deemed to be reliable. Land id™ Services makes no warranties or guarantees as to the completeness or accuracy thereof.



 Boundary


|  Boundary 37.85 ac

SOIL CODE	SOIL DESCRIPTION	ACRES	%	CSR2	CPI	NCCPI	CAP
84	Clyde clay loam, 0 to 3 percent slopes	20.89	55.21	88.0	0	91	2w
1226	Lawler loam, 0 to 2 percent slopes, rarely flooded	13	34.36	59.0	0	87	2s
198B	Floyd loam, 1 to 4 percent slopes	3.18	8.4	89.0	0	88	2w
407B	Schley loam, 1 to 4 percent slopes	0.77	2.03	81.0	0	95	2w
177	Saude loam, 0 to 2 percent slopes	0.01	0.03	60.0	0	77	2s
TOTALS		37.85(*)	100%	77.99	-	89.48	2.0

(*) Total acres may differ in the second decimal compared to the sum of each acreage soil. This is due to a round error because we only show the acres of each soil with two decimal.





 Boundary

|  Boundary 45.25 ac

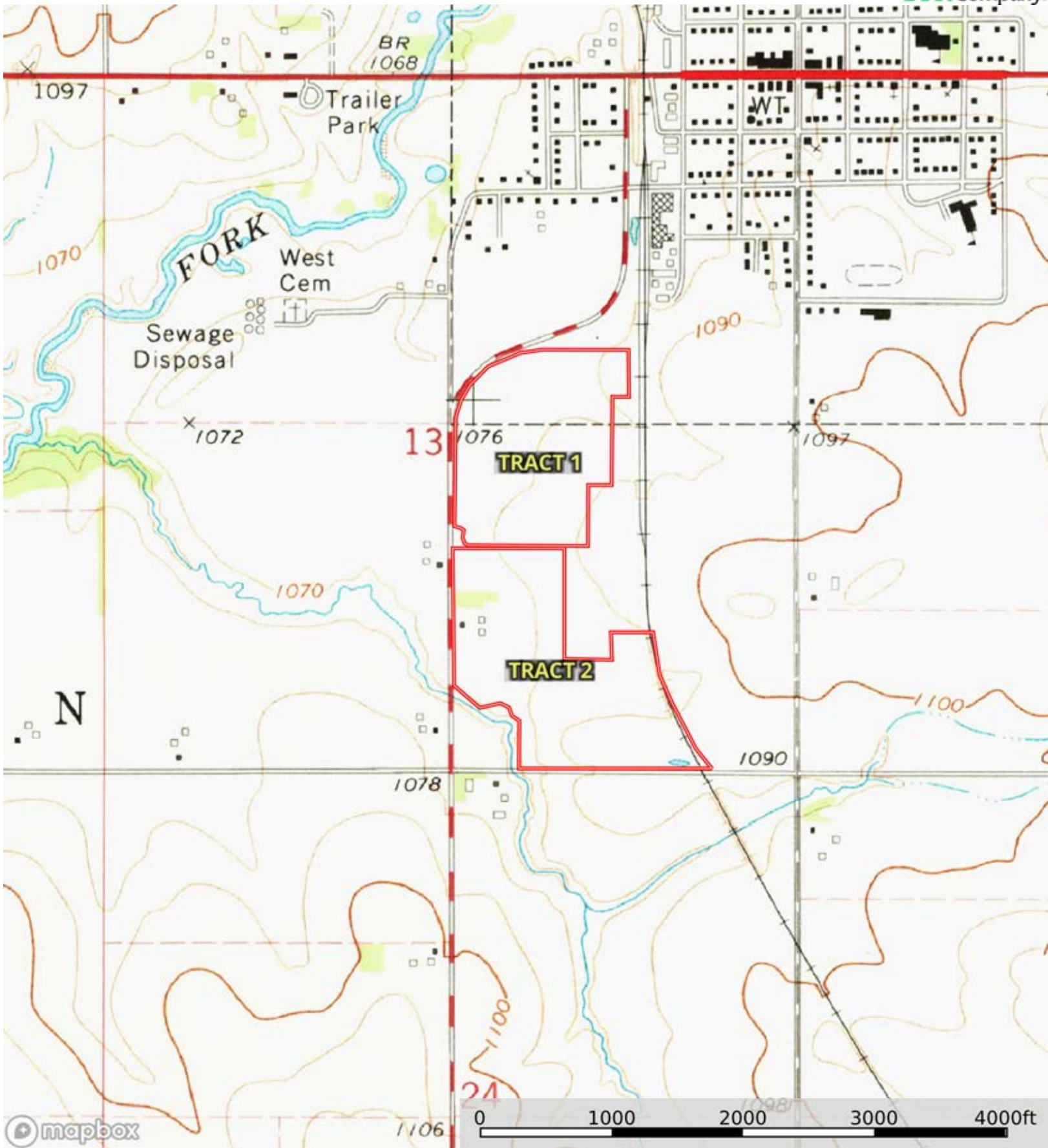
SOIL CODE	SOIL DESCRIPTION	ACRES	%	CSR2	CPI	NCCPI	CAP
407B	Schley loam, 1 to 4 percent slopes	20.72	45.78	81.0	0	95	2w
84	Clyde clay loam, 0 to 3 percent slopes	8.85	19.55	88.0	0	91	2w
173	Hoopeston sandy loam, 0 to 3 percent slopes	6.17	13.63	55.0	0	66	2s
285D	Burkhardt sandy loam, 5 to 14 percent slopes	3.92	8.66	5.0	0	46	6e
83C	Kenyon loam, 5 to 9 percent slopes	2.49	5.5	85.0	0	86	3e
585	Coland-Spillville complex, 0 to 2 percent slopes, occasionally flooded	1.07	2.36	70.0	0	77	2w
83B	Kenyon loam, 2 to 5 percent slopes	1.06	2.34	90.0	0	87	2e
177	Saude loam, 0 to 2 percent slopes	0.84	1.86	60.0	0	77	2s
W	Water	0.13	0.29	-	0	-	-
TOTALS		45.25(*)	100%	71.77	-	84.28	2.4

(*) Total acres may differ in the second decimal compared to the sum of each acreage soil. This is due to a round error because we only show the acres of each soil with two decimal.



L-2400140

Chickasaw County, Iowa, 81.11 AC +/-



Boundary