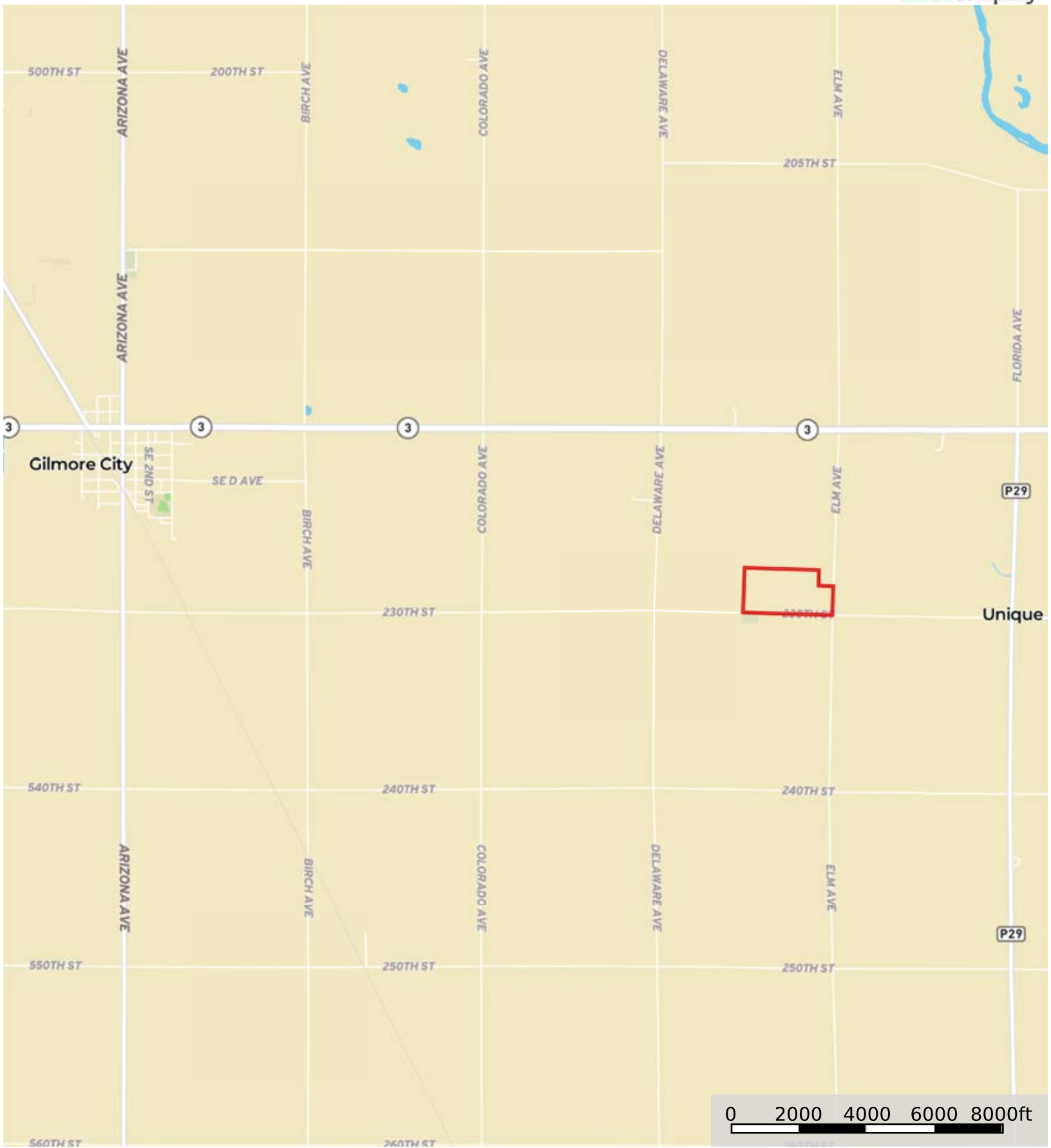



L-2300433-2 Higgins 75.5 acres  
Humboldt County, Iowa, 75.5 AC +/-



Boundary



 Boundary





 Boundary

|  Boundary 75.33 ac


SOIL CODE	SOIL DESCRIPTION	ACRES	%	CSR2	CPI	NCCPI	CAP
338	Garmore loam, 0 to 2 percent slopes	33.24	44.13	91.0	0	96	1
138C2	Clarion loam, 6 to 10 percent slopes, moderately eroded	18.23	24.2	83.0	0	69	3e
138B	Clarion loam, 2 to 6 percent slopes	12.42	16.49	89.0	0	83	2e
188	Kensett silty clay loam, 0 to 2 percent slopes	6.75	8.96	59.0	0	84	2s
274	Rolfe silt loam, 0 to 1 percent slopes	3.18	4.22	57.0	0	83	3w
5030	Pits, limestone quarries	1.51	2.0	-	0	-	-
TOTALS		75.33(*)	100%	82.61	-	83.77	1.84

(\*) Total acres may differ in the second decimal compared to the sum of each acreage soil. This is due to a round error because we only show the acres of each soil with two decimal.







 Boundary

|  All Polygons 55.48 ac

SOIL CODE	SOIL DESCRIPTION	ACRES	%	CSR2	CPI	NCCPI	CAP
338	Garmore loam, 0 to 2 percent slopes	27.06	48.79	91.0	0	96	1
138C2	Clarion loam, 6 to 10 percent slopes, moderately eroded	13.9	25.06	83.0	0	69	3e
138B	Clarion loam, 2 to 6 percent slopes	12.46	22.47	89.0	0	83	2e
274	Rolfe silt loam, 0 to 1 percent slopes	1.28	2.31	57.0	0	83	3w
5030	Pits, limestone quarries	0.55	0.99	-	0	-	-
188	Kensett silty clay loam, 0 to 2 percent slopes	0.23	0.41	59.0	0	84	2s
TOTALS		55.48(*)	100%	86.76	-	85.05	1.78

(\*) Total acres may differ in the second decimal compared to the sum of each acreage soil. This is due to a round error because we only show the acres of each soil with two decimal.

|  Boundary 40.15 ac

SOIL CODE	SOIL DESCRIPTION	ACRES	%	CSR2	CPI	NCCPI	CAP
338	Garmore loam, 0 to 2 percent slopes	19.53	48.65	91.0	0	96	1
138B	Clarion loam, 2 to 6 percent slopes	10.25	25.54	89.0	0	83	2e
138C2	Clarion loam, 6 to 10 percent slopes, moderately eroded	8.5	21.18	83.0	0	69	3e
274	Rolfe silt loam, 0 to 1 percent slopes	1.28	3.19	57.0	0	83	3w
5030	Pits, limestone quarries	0.55	1.37	-	0	-	-
188	Kensett silty clay loam, 0 to 2 percent slopes	0.04	0.1	59.0	0	84	2s
TOTALS		40.15(*)	100%	86.45	-	85.24	1.75

(\*) Total acres may differ in the second decimal compared to the sum of each acreage soil. This is due to a round error because we only show the acres of each soil with two decimal.

|  Boundary 15.33 ac

SOIL CODE	SOIL DESCRIPTION	ACRES	%	CSR2	CPI	NCCPI	CAP
338	Garmore loam, 0 to 2 percent slopes	7.53	49.15	91.0	0	96	1
138C2	Clarion loam, 6 to 10 percent slopes, moderately eroded	5.4	35.25	83.0	0	69	3e
138B	Clarion loam, 2 to 6 percent slopes	2.21	14.43	89.0	0	83	2e
188	Kensett silty clay loam, 0 to 2 percent slopes	0.19	1.24	59.0	0	84	2s
TOTALS		15.33(*)	100%	87.55	-	84.52	1.86





(\*) Total acres may differ in the second decimal compared to the sum of each acreage soil. This is due to a round error because we only show the acres of each soil with two decimal.

## Capability Legend

Increased Limitations and Hazards

Decreased Adaptability and Freedom of Choice Users

Land, Capability

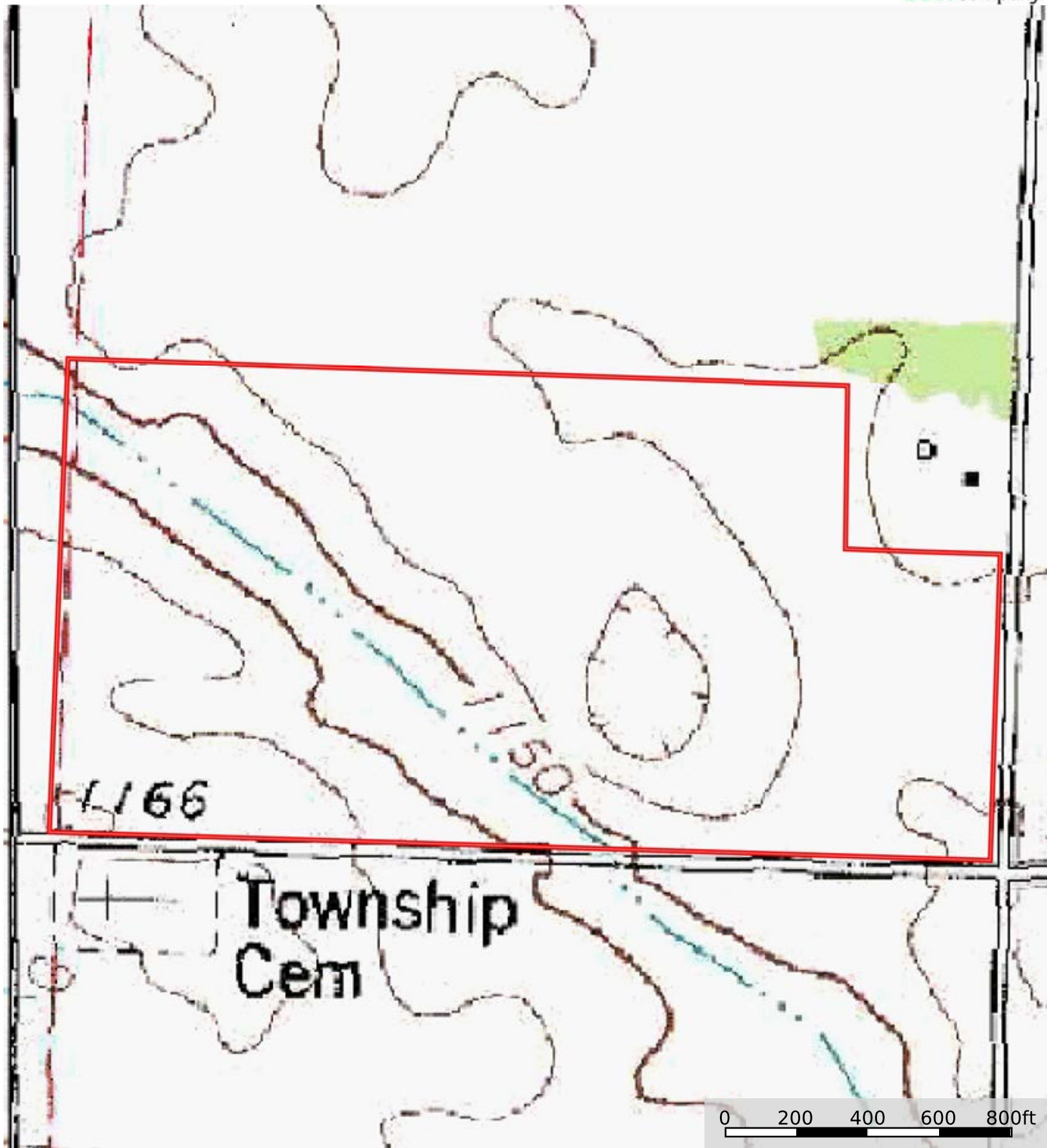
								
	1	2	3	4	5	6	7	8
'Wild Life'	•	•	•	•	•	•	•	•
Forestry	•	•	•	•	•	•	•	
Limited	•	•	•	•	•	•	•	
Moderate	•	•	•	•	•	•		
Intense	•	•	•	•	•			
Limited	•	•	•	•				
Moderate	•	•	•					
Intense	•	•						
Very Intense	•							


### Grazing Cultivation

(c) climatic limitations (e) susceptibility to erosion

(s) soil limitations within the rooting zone (w) excess of water





 Boundary