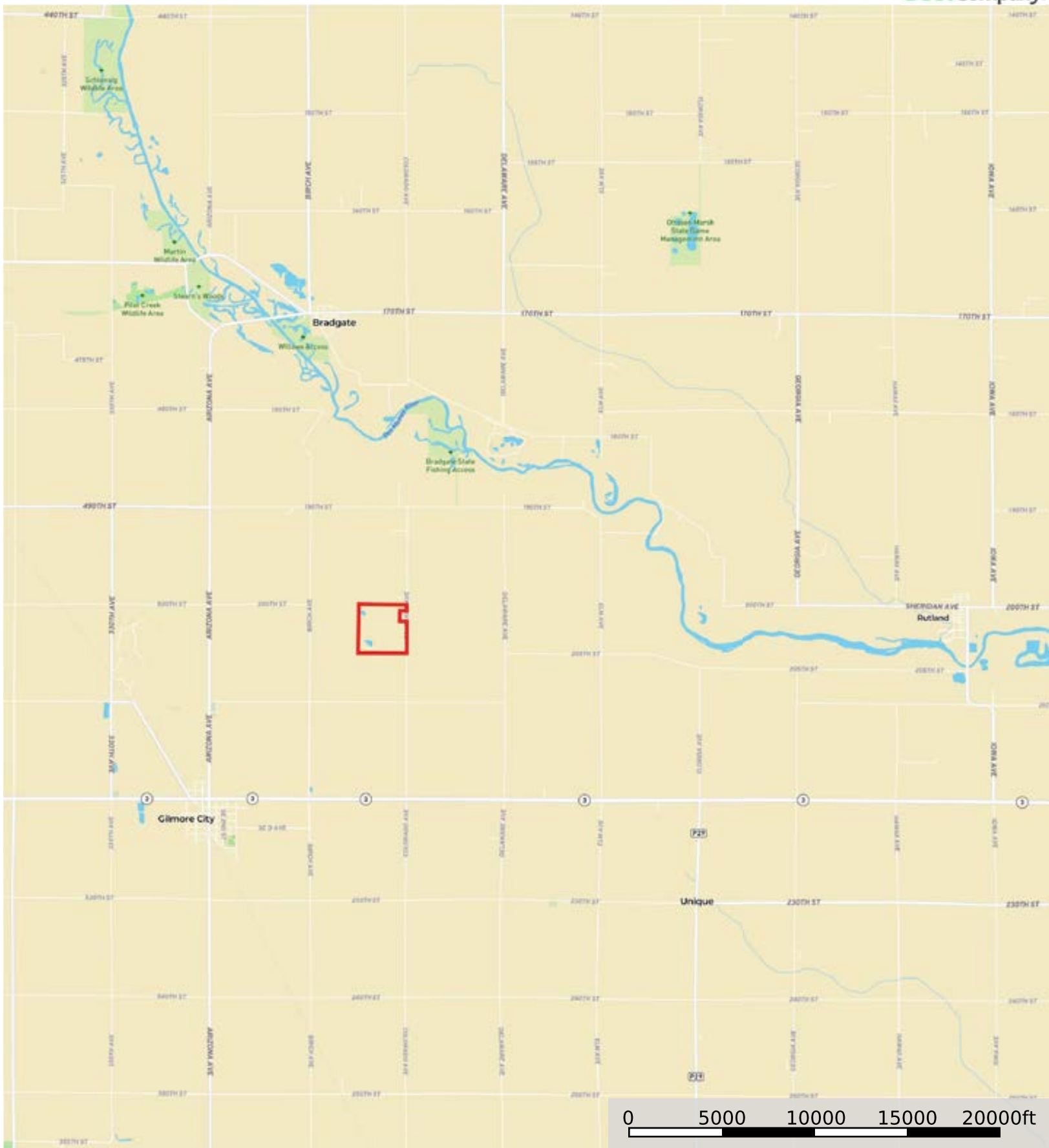


L-2400085 Tinken

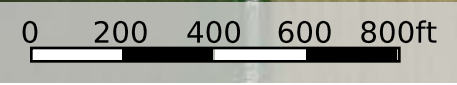
Humboldt County, Iowa, 154.9 AC +/-



 Boundary



 Boundary



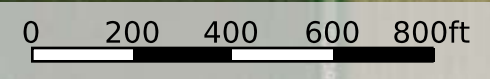
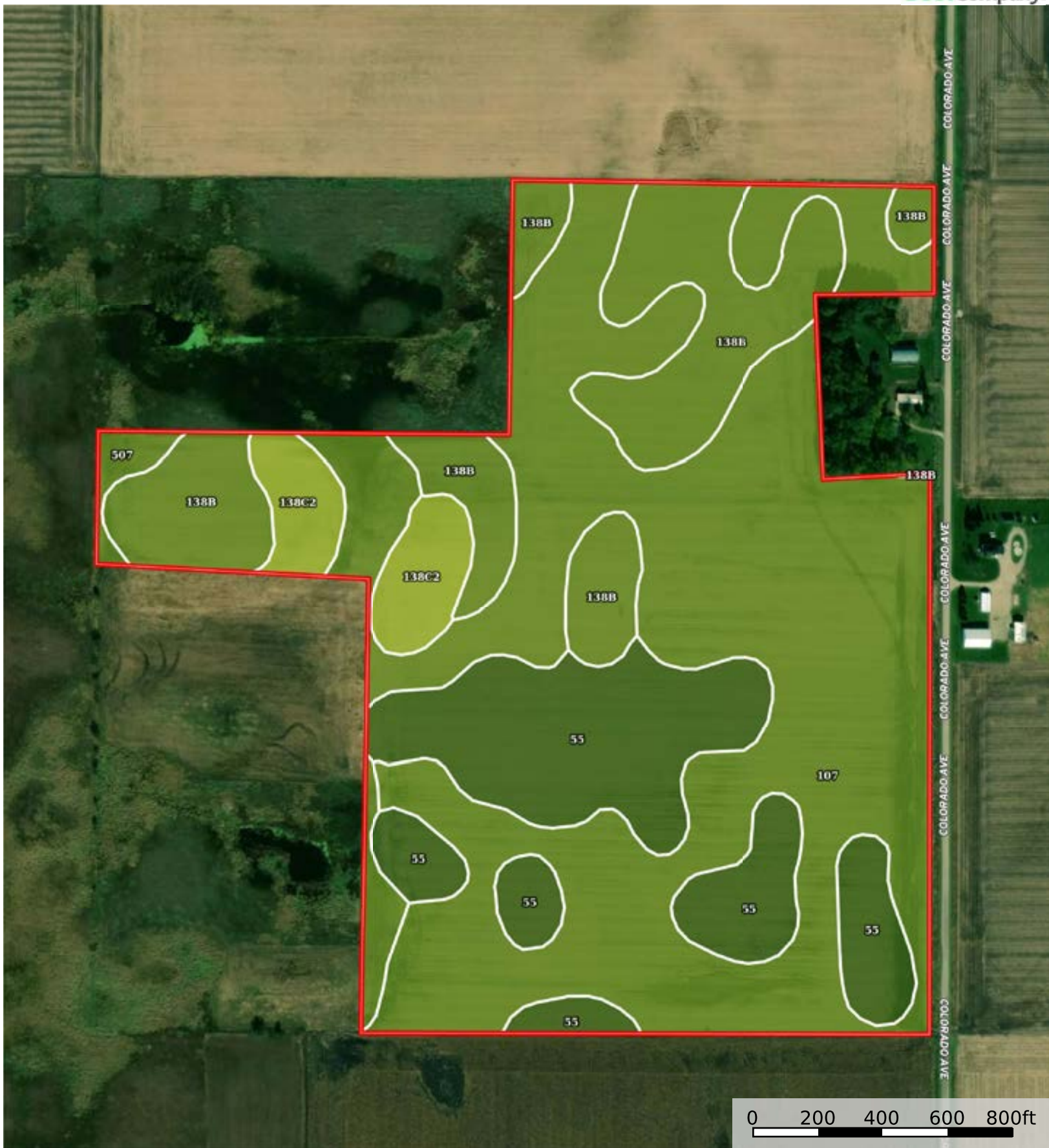
 Boundary

Boundary 154.56 ac

SOIL CODE	SOIL DESCRIPTION	ACRES	%	CSR2	CPI	NCCPI	CAP
107	Webster clay loam, 0 to 2 percent slopes	67.82	43.88	86.0	0	83	2w
507	Canisteo clay loam, 0 to 2 percent slopes	29.55	19.12	84.0	0	82	2w
138B	Clarion loam, 2 to 6 percent slopes	26.22	16.96	89.0	0	83	2e
55	Nicollet clay loam, 1 to 3 percent slopes	20.08	12.99	89.0	0	81	1
6	Okoboji silty clay loam, 0 to 1 percent slopes	5.6	3.62	59.0	0	75	3w
138C2	Clarion loam, 6 to 10 percent slopes, moderately eroded	5.29	3.42	83.0	0	69	3e
TOTALS		154.56(*)	100%	85.44	-	81.78	1.94

(*) Total acres may differ in the second decimal compared to the sum of each acreage soil. This is due to a round error because we only show the acres of each soil with two decimal.





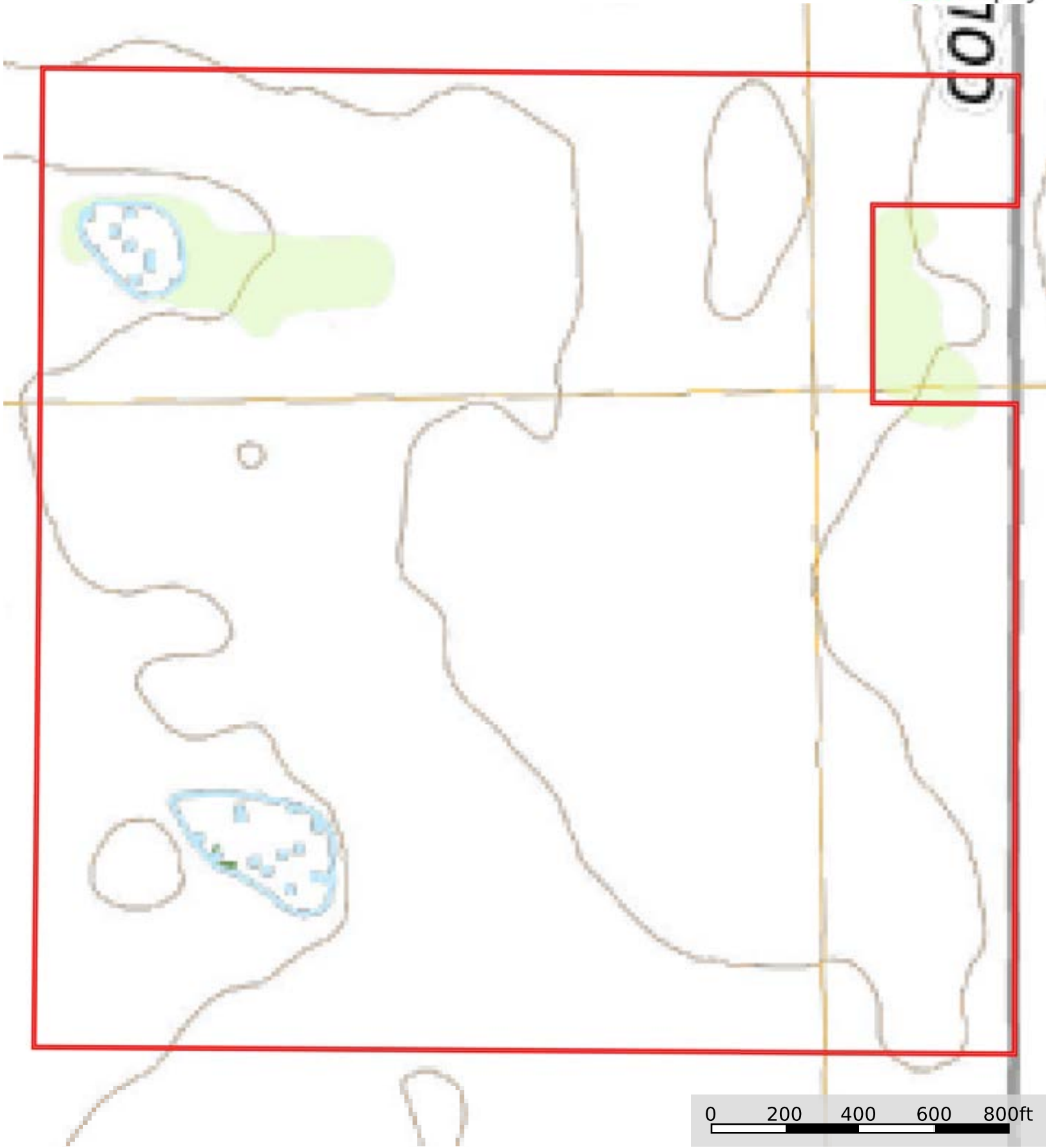
 Boundary

Boundary 101.24 ac

SOIL CODE	SOIL DESCRIPTION	ACRES	%	CSR2	CPI	NCCPI	CAP
107	Webster clay loam, 0 to 2 percent slopes	55.71	55.03	86.0	0	83	2w
55	Nicollet clay loam, 1 to 3 percent slopes	19.91	19.67	89.0	0	81	1
138B	Clarion loam, 2 to 6 percent slopes	18.79	18.56	89.0	0	83	2e
138C2	Clarion loam, 6 to 10 percent slopes, moderately eroded	4.68	4.62	83.0	0	69	3e
507	Canisteo clay loam, 0 to 2 percent slopes	2.15	2.12	84.0	0	82	2w
TOTALS		101.24(*)	100%	86.97	-	81.94	1.85

(*) Total acres may differ in the second decimal compared to the sum of each acreage soil. This is due to a round error because we only show the acres of each soil with two decimal.





 Boundary