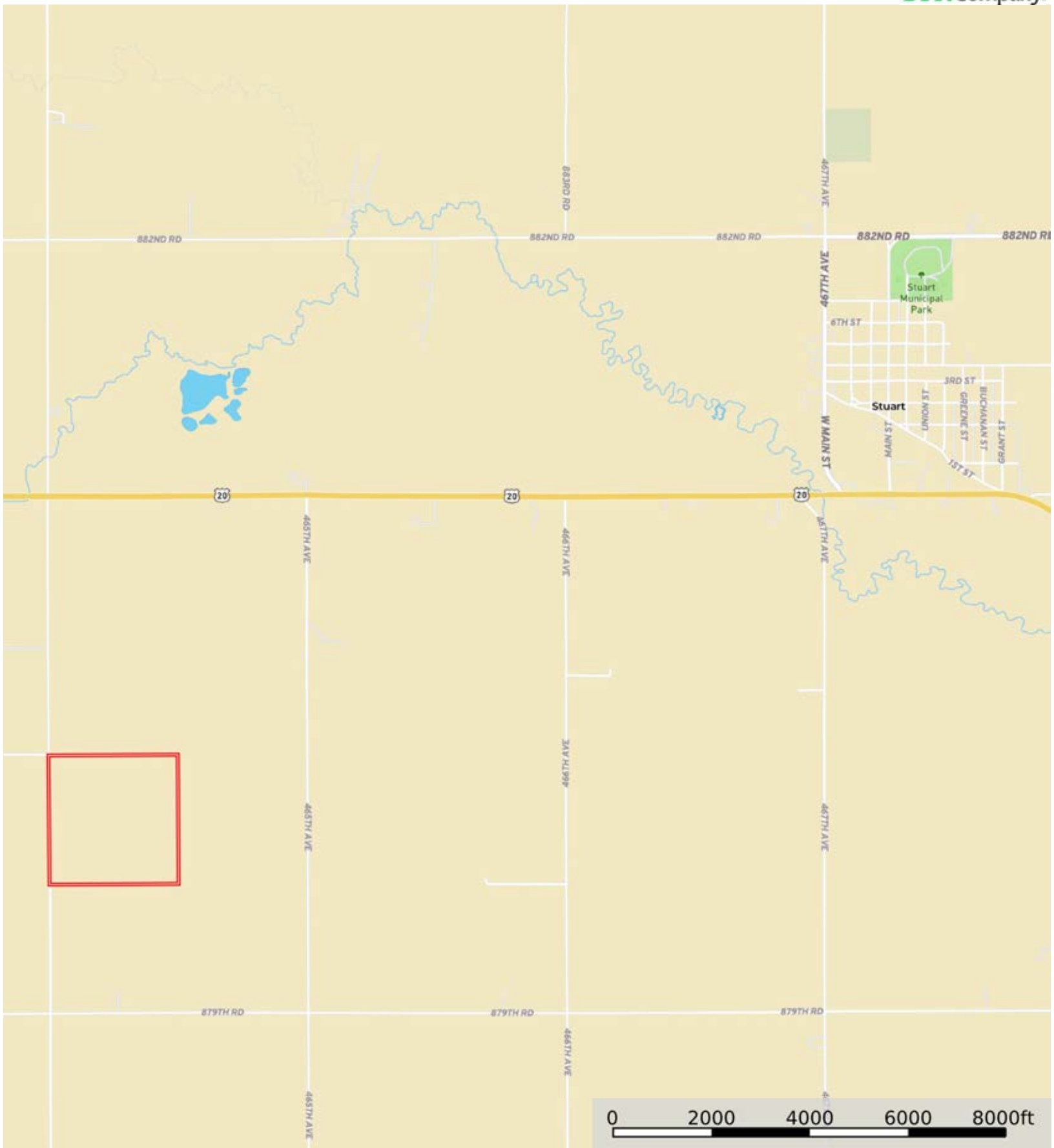




L-2400156

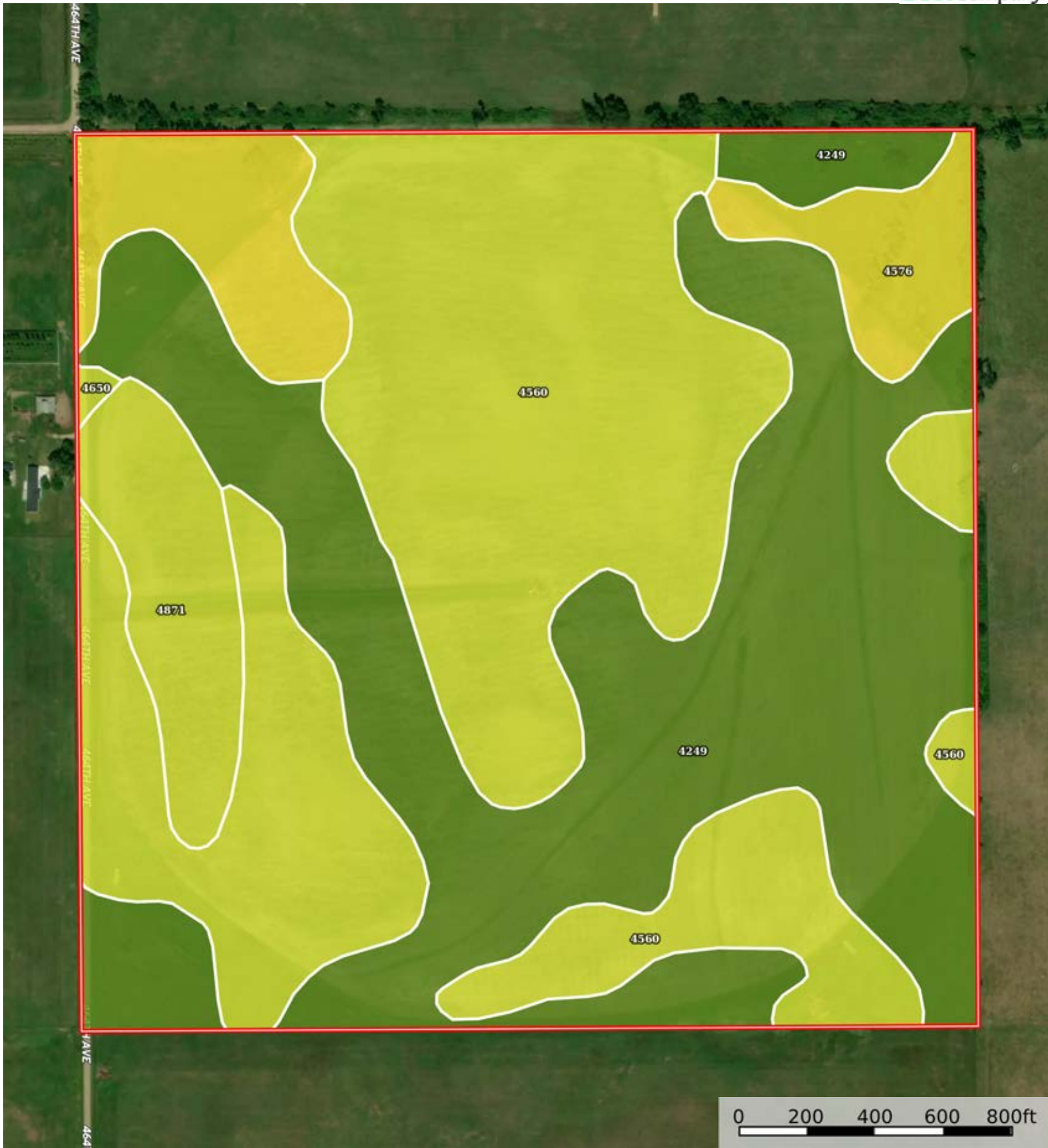
Holt County, Nebraska, 160 AC +/-




 Boundary



 Boundary



 Boundary

|  Boundary 159.94 ac

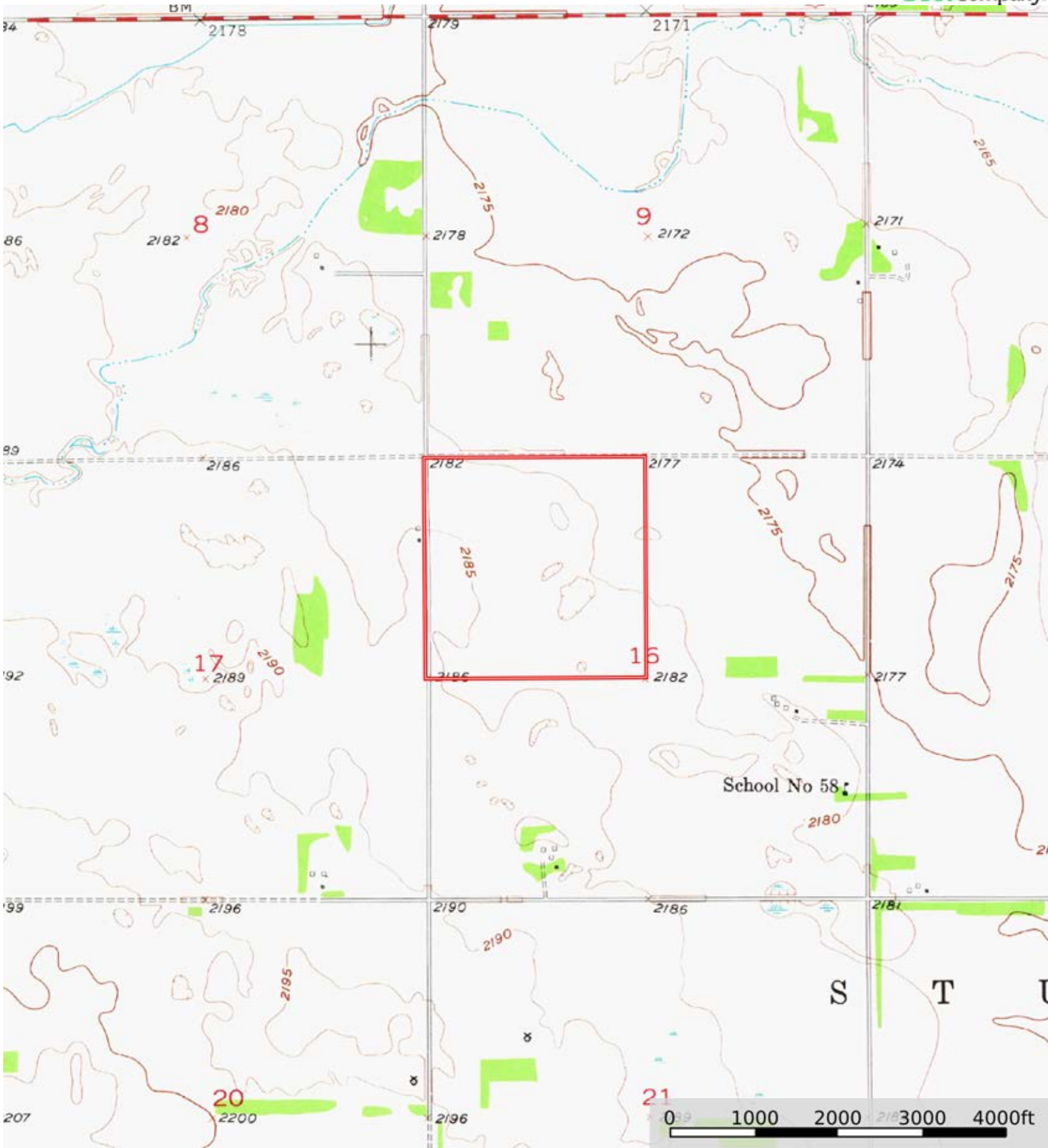
SOIL CODE	SOIL DESCRIPTION	ACRES	%	CPI	NCCPI	CAP
4249	Ord-Lute fine sandy loams, rarely flooded	65.24	40.79	0	30	2w
4560	Elsmere-lpage loamy fine sands, 0 to 3 percent slopes	53.22	33.27	0	24	4w
4650	lpage loamy fine sand, 0 to 3 percent slopes	18.2	11.38	54	24	4e
4576	Gannett loam, 0 to 1 percent slopes	14.32	8.95	51	27	5w
4871	Valentine-Dunday loamy fine sands, 0 to 3 percent slopes	8.96	5.6	0	24	4e
TOTALS		159.94(*)	100%	10.71	26.72	3.27

(*) Total acres may differ in the second decimal compared to the sum of each acreage soil. This is due to a round error because we only show the acres of each soil with two decimal.



L-2400156

Holt County, Nebraska, 160 AC +/-



Boundary



The information contained herein was obtained from sources deemed to be reliable. Land id™ Services makes no warranties or guarantees as to the completeness or accuracy thereof.