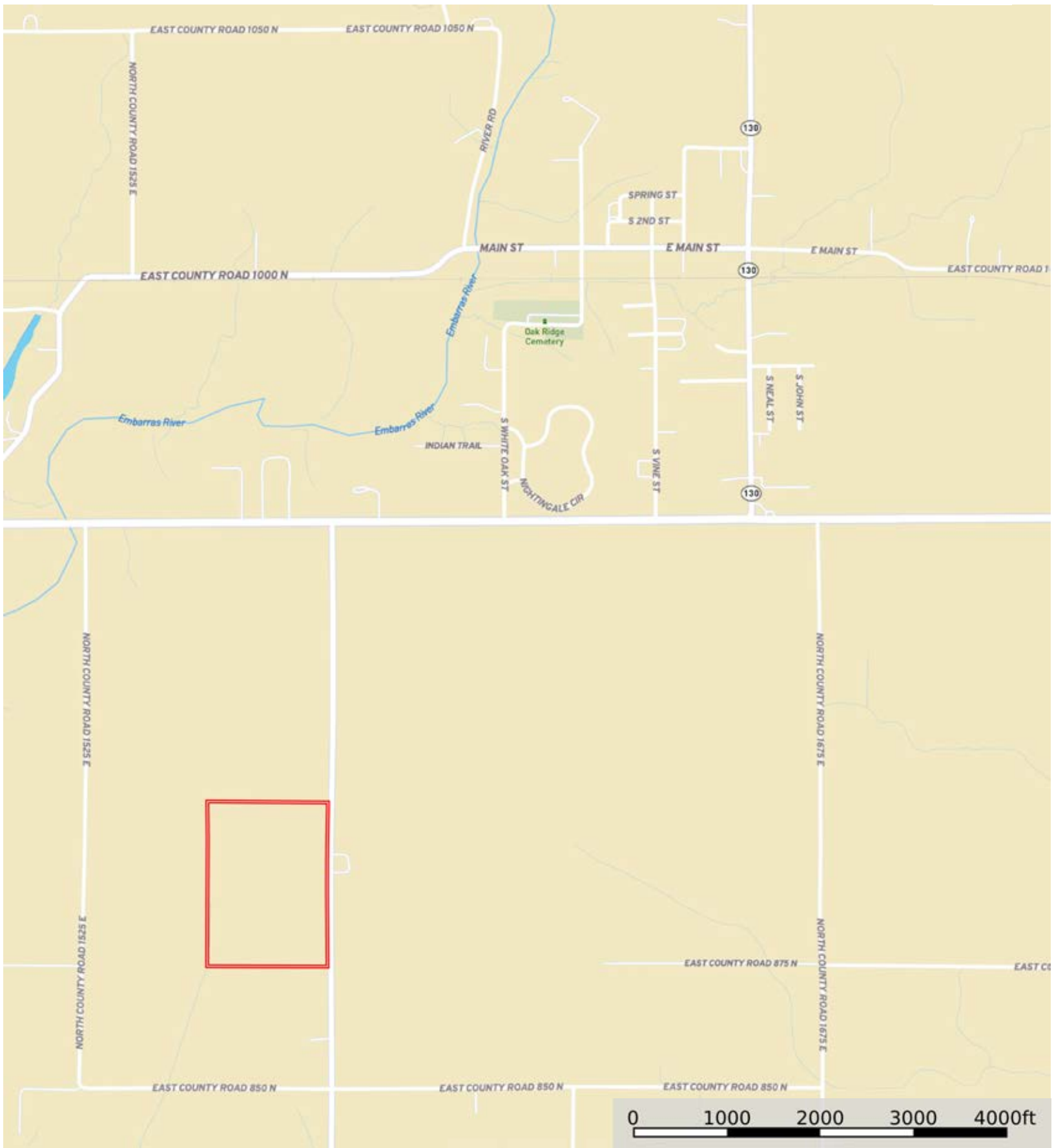



Ware Farms

Douglas County, Illinois, 52.47 AC +/-



 Boundary




The information contained herein was obtained from sources deemed to be reliable. Land id™ Services makes no warranties or guarantees as to the completeness or accuracy thereof.

Ware Farms

Douglas County, Illinois, 52.47 AC +/-



 Boundary




The information contained herein was obtained from sources deemed to be reliable. Land id™ Services makes no warranties or guarantees as to the completeness or accuracy thereof.

Ware Farms

Douglas County, Illinois, 52.47 AC +/-



 Boundary

|  Boundary 52.35 ac

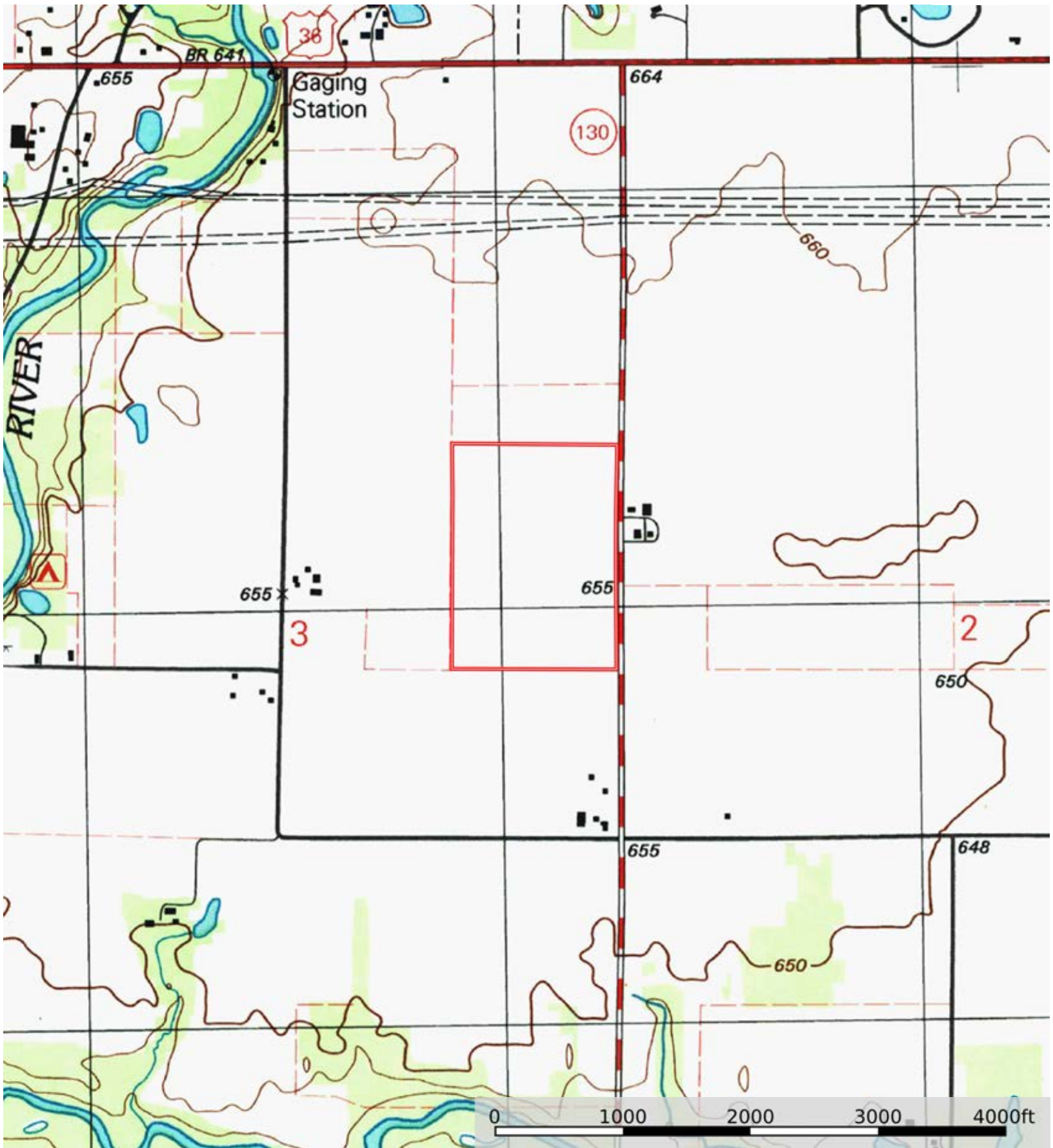
SOIL CODE	SOIL DESCRIPTION	ACRES	%	PI	NCCPI	CAP
242A	Kendall silt loam, 0 to 2 percent slopes	23.42	44.74	125	87	2w
152A	Drummer silty clay loam, 0 to 2 percent slopes	16.81	32.11	144	83	2w
136A	Brooklyn silt loam, 0 to 2 percent slopes	6.82	13.03	112	81	2w
134B	Camden silt loam, 2 to 5 percent slopes	3.68	7.03	117	91	2e
132A	Starks silt loam, 0 to 2 percent slopes	1.62	3.09	119	89	2w
TOTALS		52.35(*)	100%	128.66	85.28	2.0


(*) Total acres may differ in the second decimal compared to the sum of each acreage soil. This is due to a round error because we only show the acres of each soil with two decimal.



Ware Farms

Douglas County, Illinois, 52.47 AC +/-



 Boundary