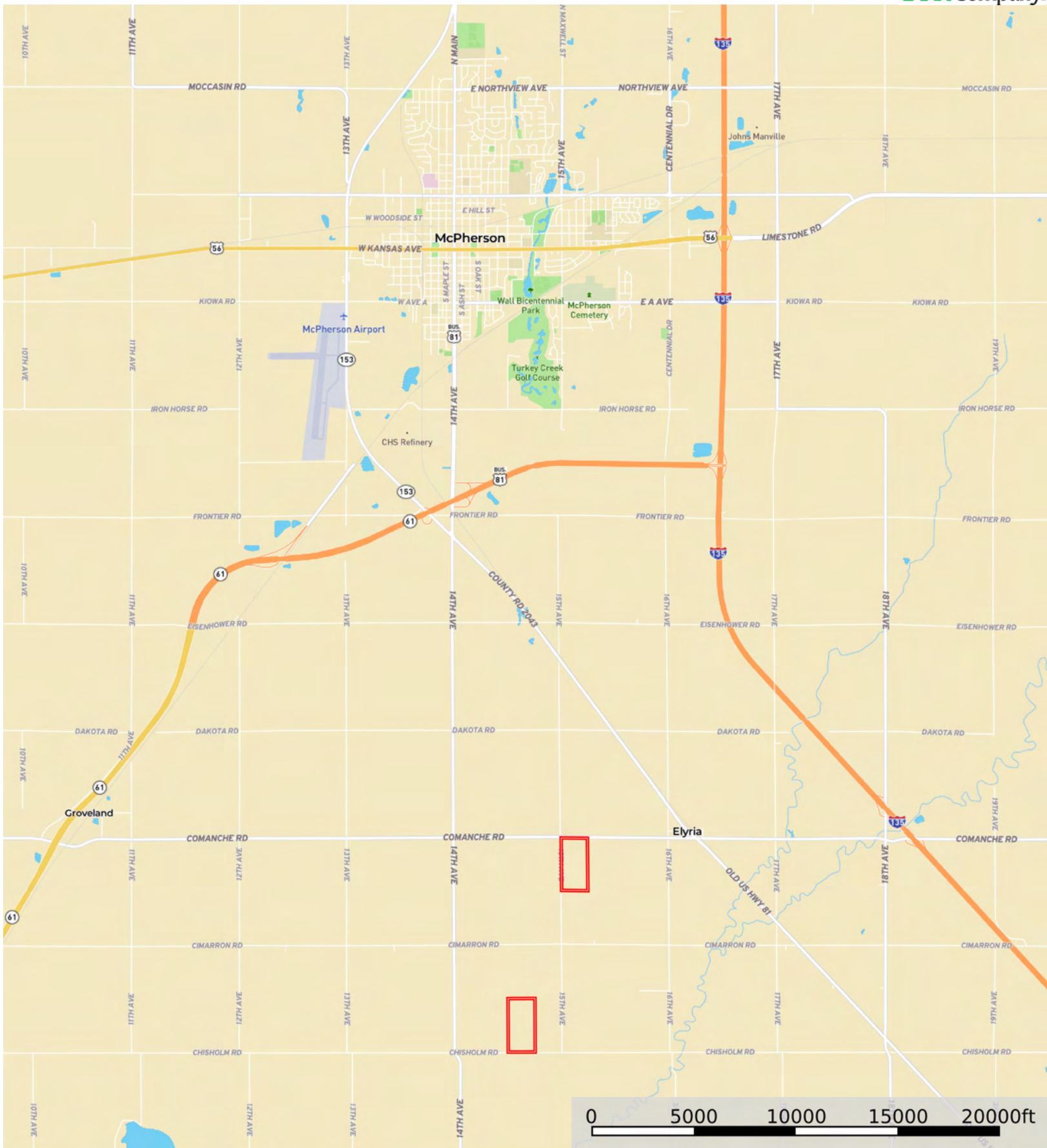
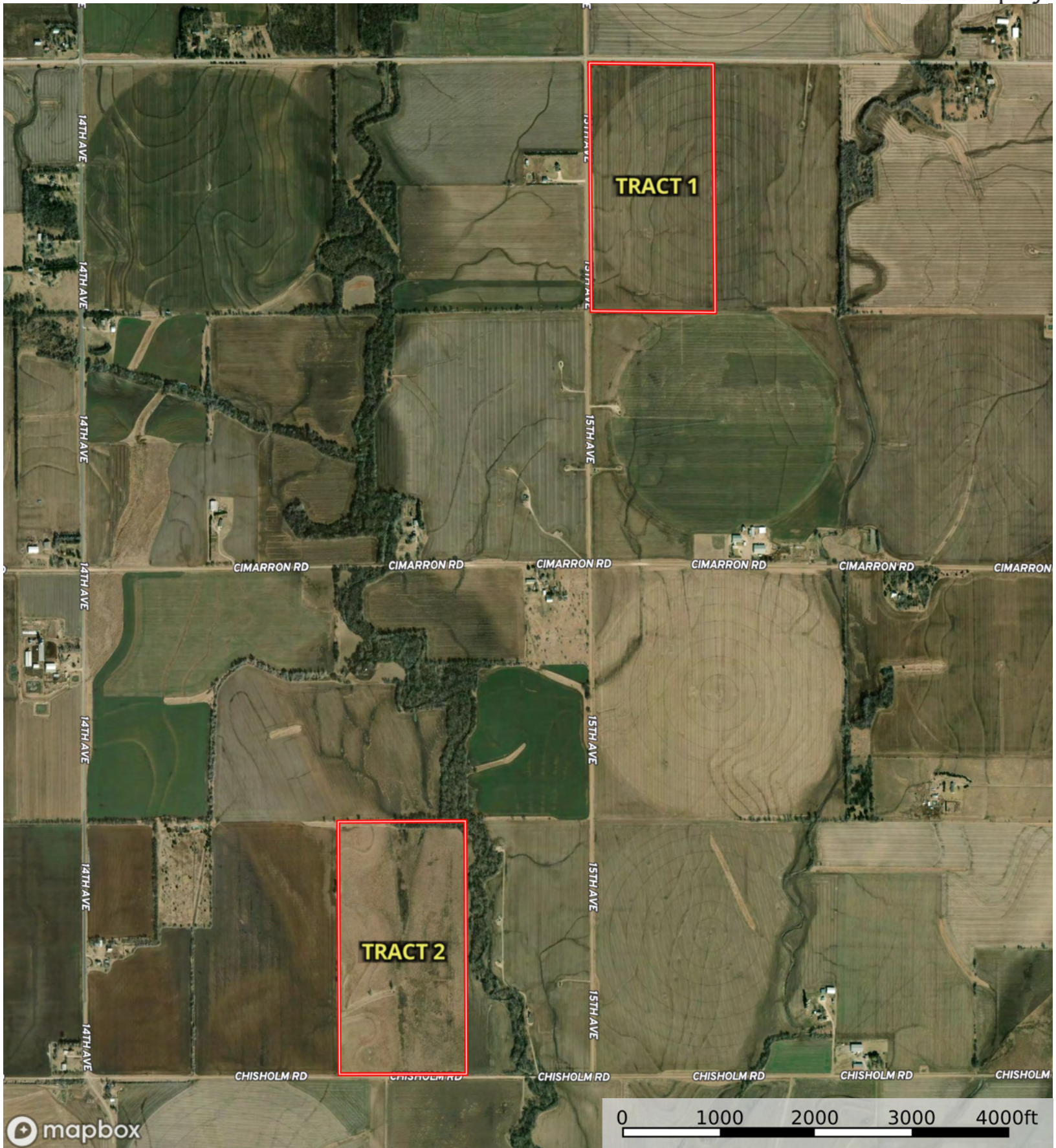


Warren Gering - McPherson

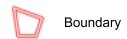
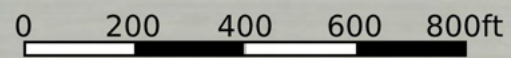
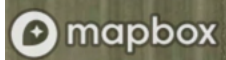
McPherson County, Kansas, 156.7 AC +/-

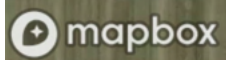


 Boundary



 Boundary





 Boundary

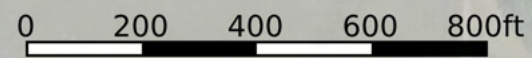
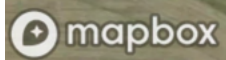
|  Boundary 76.48 ac


SOIL CODE	SOIL DESCRIPTION	ACRES	%	CPI	NCCPI	CAP
3801	Crete silt loam, 1 to 3 percent slopes, loess plains and breaks	40.27	52.65	0	63	2e
3800	Crete silt loam, 0 to 1 percent slopes, loess plains and breaks	36.21	47.35	0	65	2s
TOTALS		76.48(*)	100%	-	63.95	2.0

(*) Total acres may differ in the second decimal compared to the sum of each acreage soil. This is due to a round error because we only show the acres of each soil with two decimal.







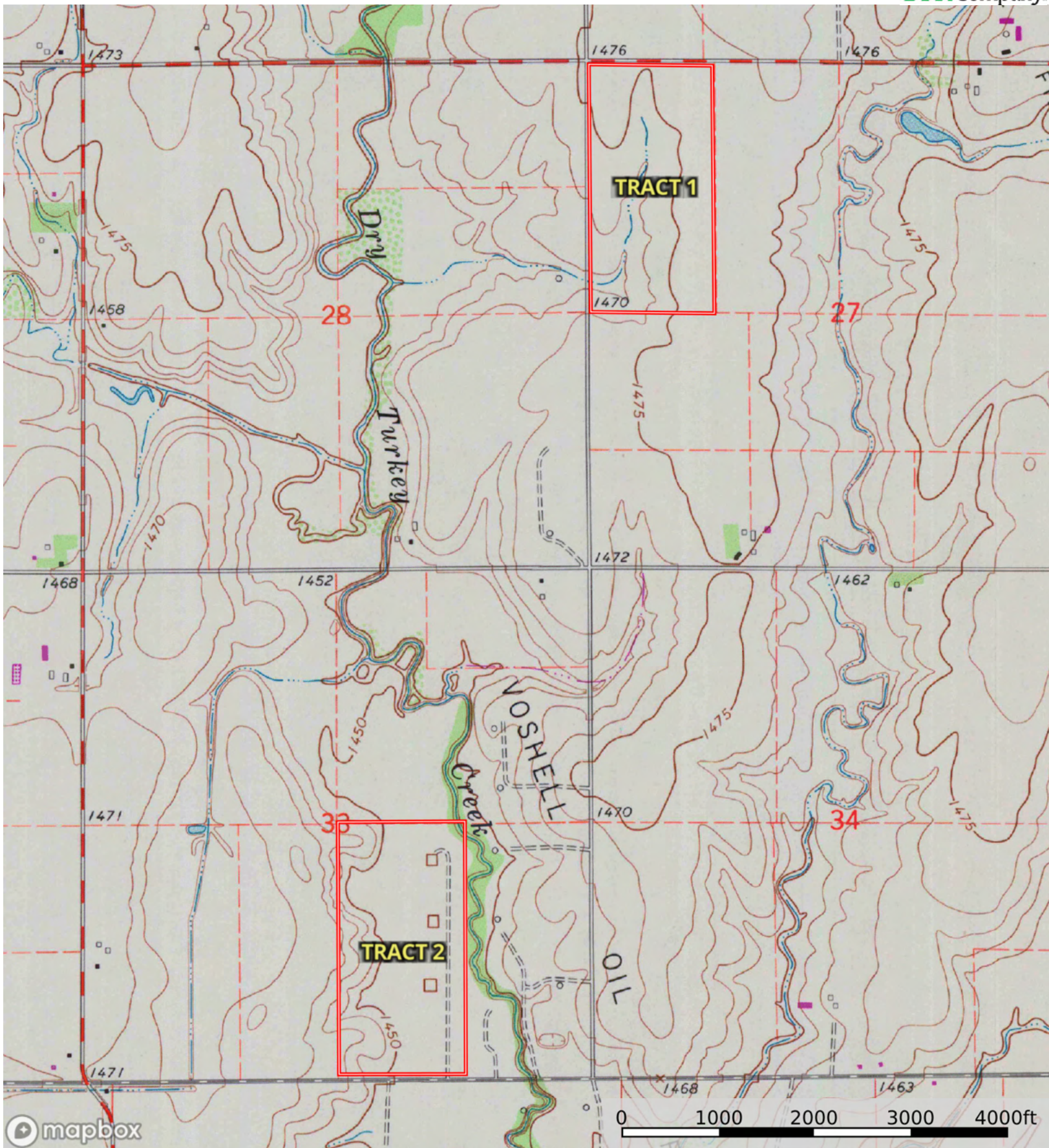
 Boundary


|  Boundary 80.15 ac

SOIL CODE	SOIL DESCRIPTION	ACRES	%	CPI	NCCPI	CAP
2266	Tobin silt loam, occasionally flooded	50.78	63.36	0	84	2w
3829	Crete silty clay loam, 1 to 3 percent slopes, eroded	12.47	15.56	0	55	2e
3801	Crete silt loam, 1 to 3 percent slopes, loess plains and breaks	8.89	11.09	0	63	2e
3921	Smolan silty clay loam, 1 to 3 percent slopes	8.01	9.99	0	65	2e
TOTALS		80.15(*)	100%	-	75.26	2.0

(*) Total acres may differ in the second decimal compared to the sum of each acreage soil. This is due to a round error because we only show the acres of each soil with two decimal.





 Boundary