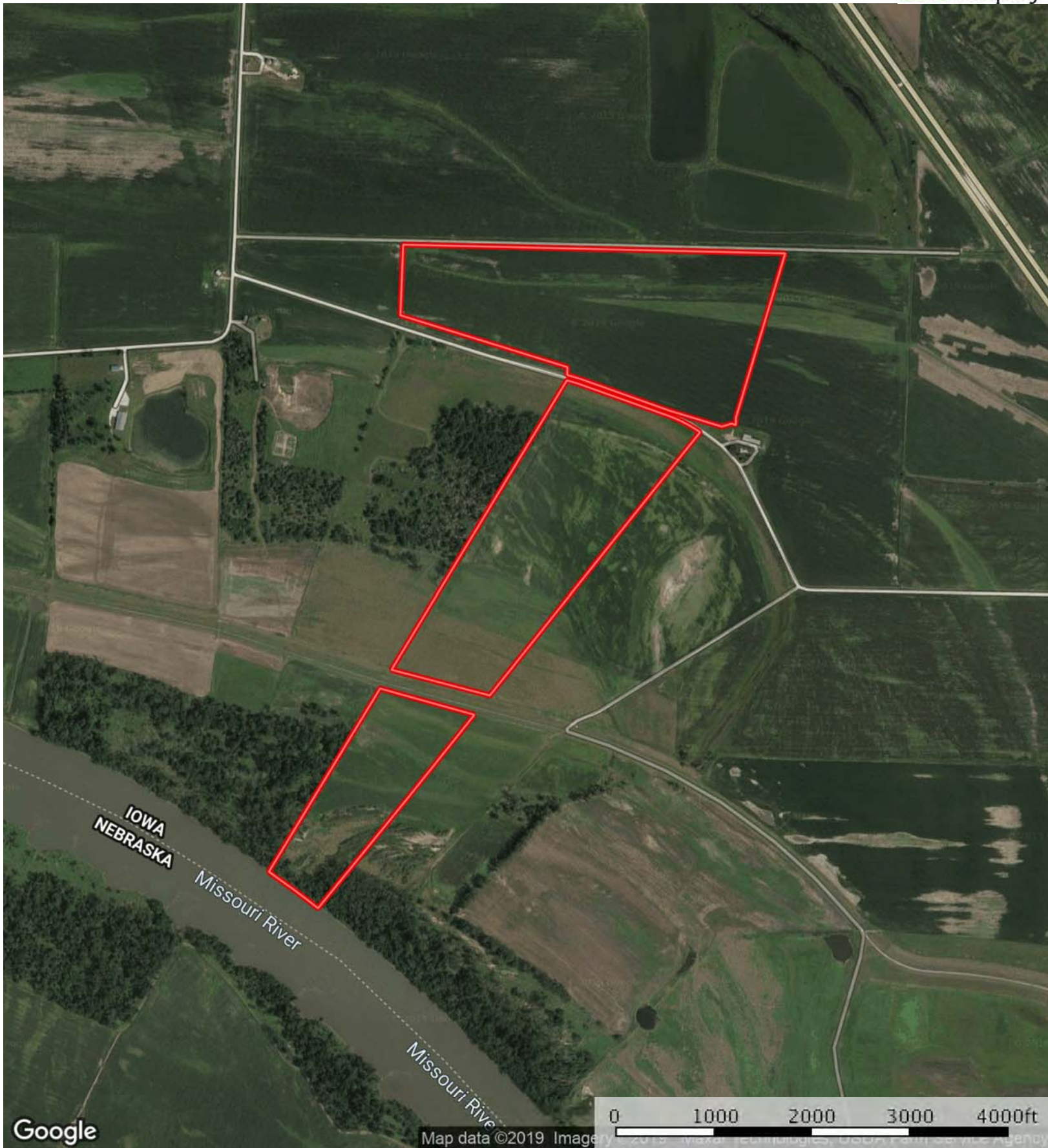
 Boundary

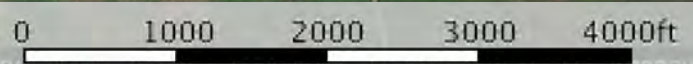


 Boundary



Google

Map data ©2019 Imagery



Boundary

|  All Polygons 143.0 ac

SOIL CODE	SOIL DESCRIPTION	ACRES	%	CSR2	CAP
146	Onawa silty clay	12.9	9.02	79	2w
156	Albaton silty clay, 0 to 2 percent slopes, occasionally flooded	13.8	9.64	52	3w
144	Blake silty clay loam	38.6	26.99	90	1
137	Haynie silt loam, 0 to 2 percent slopes, occasionally flooded	30.1	21.05	67	2w
237B	Sarpy loamy fine sand, 3 to 7 percent slopes	1.3	0.89	8	4s
514	Grable silt loam	3.9	2.7	44	2s
538	Carr fine sandy loam, 1 to 3 percent slopes	28.0	19.59	51	3s
1512	Vore-Haynie complex, 0 to 2 percent slopes, frequently flooded	10.2	7.14	5	5w
53	Riverwash	4.0	2.83	5	7w
W	Water	0.2	0.15	-	-
TOTALS		143.0	100%	62.28	2.39

|  Boundary 63.2 ac

SOIL CODE	SOIL DESCRIPTION	ACRES	%	CSR2	CAP
146	Onawa silty clay	2.4	3.84	79	2w
156	Albaton silty clay, 0 to 2 percent slopes, occasionally flooded	13.8	21.81	52	3w
144	Blake silty clay loam	28.7	45.48	90	1
137	Haynie silt loam, 0 to 2 percent slopes, occasionally flooded	18.2	28.87	67	2w
TOTALS		63.2	100%	74.65	1.76

|  Boundary 55.1 ac

SOIL CODE	SOIL DESCRIPTION	ACRES	%	CSR2	CAP
144	Blake silty clay loam	9.8	17.85	90	1
146	Onawa silty clay	10.5	18.98	79	2w
237B	Sarpy loamy fine sand, 3 to 7 percent slopes	1.3	2.31	8	4s
514	Grable silt loam	3.9	7.0	44	2s
137	Haynie silt loam, 0 to 2 percent slopes, occasionally flooded	1.7	3.06	67	2w
538	Carr fine sandy loam, 1 to 3 percent slopes	28.0	50.8	51	3s
TOTALS		55.1	100%	62.28	2.38

|  Boundary 24.6 ac

SOIL CODE	SOIL DESCRIPTION	ACRES	%	CSR2	CAP
1512	Vore-Haynie complex, 0 to 2 percent slopes, frequently flooded	10.2	41.43	5	5w

137	Haynie silt loam, 0 to 2 percent slopes, occasionally flooded	10.2	41.27	67	2w
53	Riverwash	4.0	16.41	5	7w
W	Water	0.2	0.89	-	-
TOTALS		24.6	100%	30.54	4.05

Capability Legend

Increased Limitations and Hazards

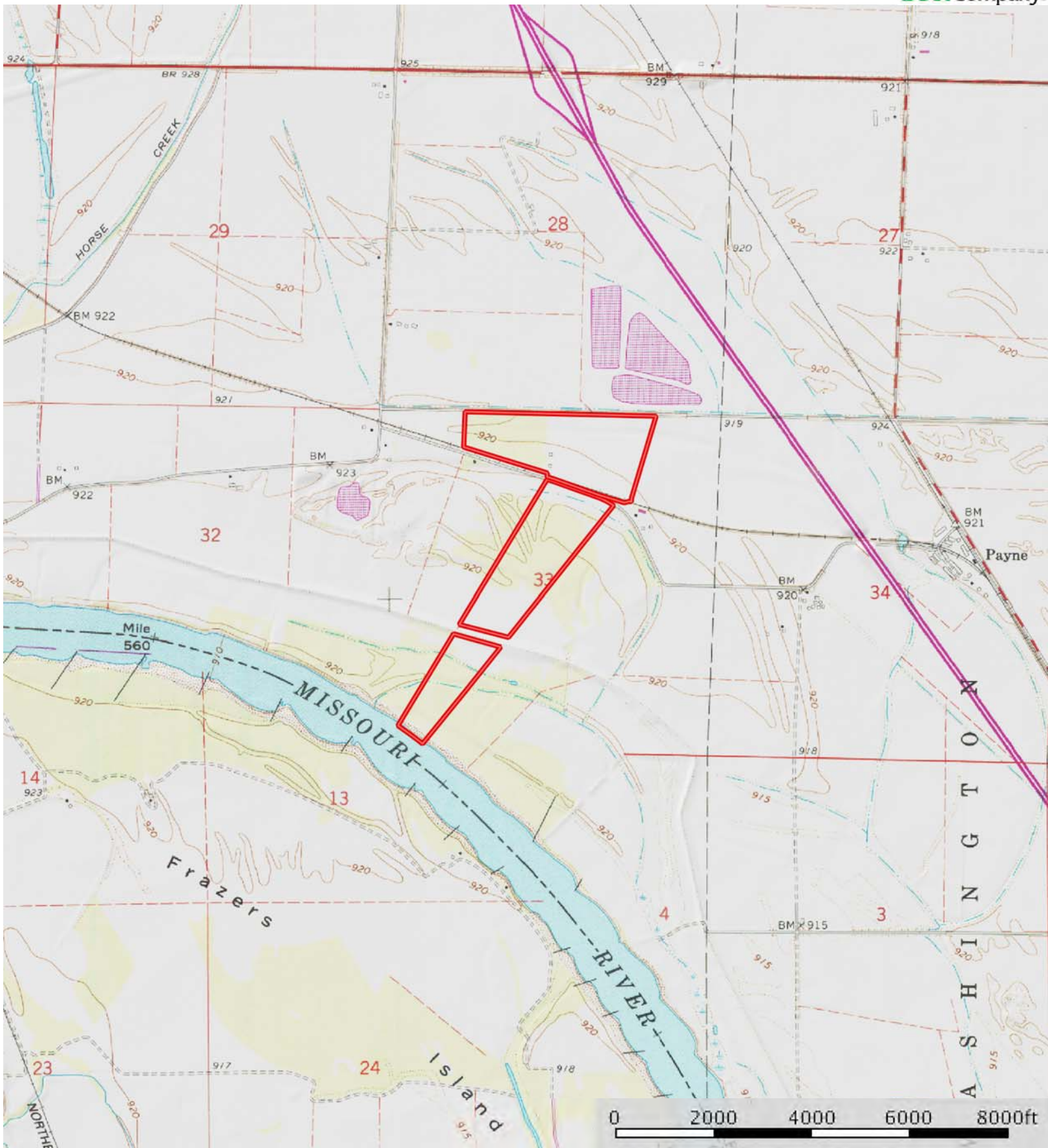
Decreased Adaptability and Freedom of Choice Users

Land, Capability Class(non-irrigated)	1	2	3	4	5	6	7	8
'Wild Life'	•	•	•	•	•	•	•	•
Forestry	•	•	•	•	•	•	•	
Limited	•	•	•	•	•	•	•	
Moderate	•	•	•	•	•	•		
Intense	•	•	•	•	•			
Limited	•	•	•	•				
Moderate	•	•	•					
Intense	•	•						
Very Intense	•							

Grazing Cultivation

(c) climatic limitations (e) susceptibility to erosion

(s) soil limitations within the rooting zone (w) excess of water



 Boundary