



HIGHLY ERODIBLE LAND AND WETLAND CONSERVATION DETERMINATION

Name Address:	Walter & Lois Appel Rev. Living Trust 5320 W. 49th St. Sioux Falls, SD 57106-1849	Request Date:	10/26/17	County:	Lincoln
Agency or Person Requesting Determination:	Farm Service Agency	Tract No:	2000	FSA Farm No.:	981

Section I - Highly Erodible Land (Y/N)

Is a soil survey now available for making a highly erodible land determination?	Y
Are there highly erodible soil map units on this farm?	N

Fields in this section have undergone a determination of whether they are highly erodible land (HEL) or not; fields for which an HEL Determination has not been completed are not listed. In order to be eligible for USDA benefits, a person must be using an approved conservation system on all HEL.

Field(s)	HEL(Y/N)	Sodbust(Y/N)	Acres	Determination Date
See previous determination				

The Highly Erodible Land determination was completed in the _____

Section II - Wetlands

Fields in this section have had wetland determinations completed. See the Definition of Wetland Label Codes for additional information regarding allowable activities under the wetland conservation provisions of the Food Security Act and/or when wetland determinations are necessary to determine USDA program eligibility.

Field(s)	Wetland Label*	Occurrence Year (CW)	Acres	Determination Date	Certification Date
1	PC		10.8	12/27/17	12/27/17
1	NW		122.3	12/27/17	12/27/17

The wetland determination was completed in the _____ Office It was mailed to the person on 12/27/2017

Remarks: _____

I certify that the above determinations are correct and were conducted in accordance with policies and procedures contained in the National Food Security Act Manual.

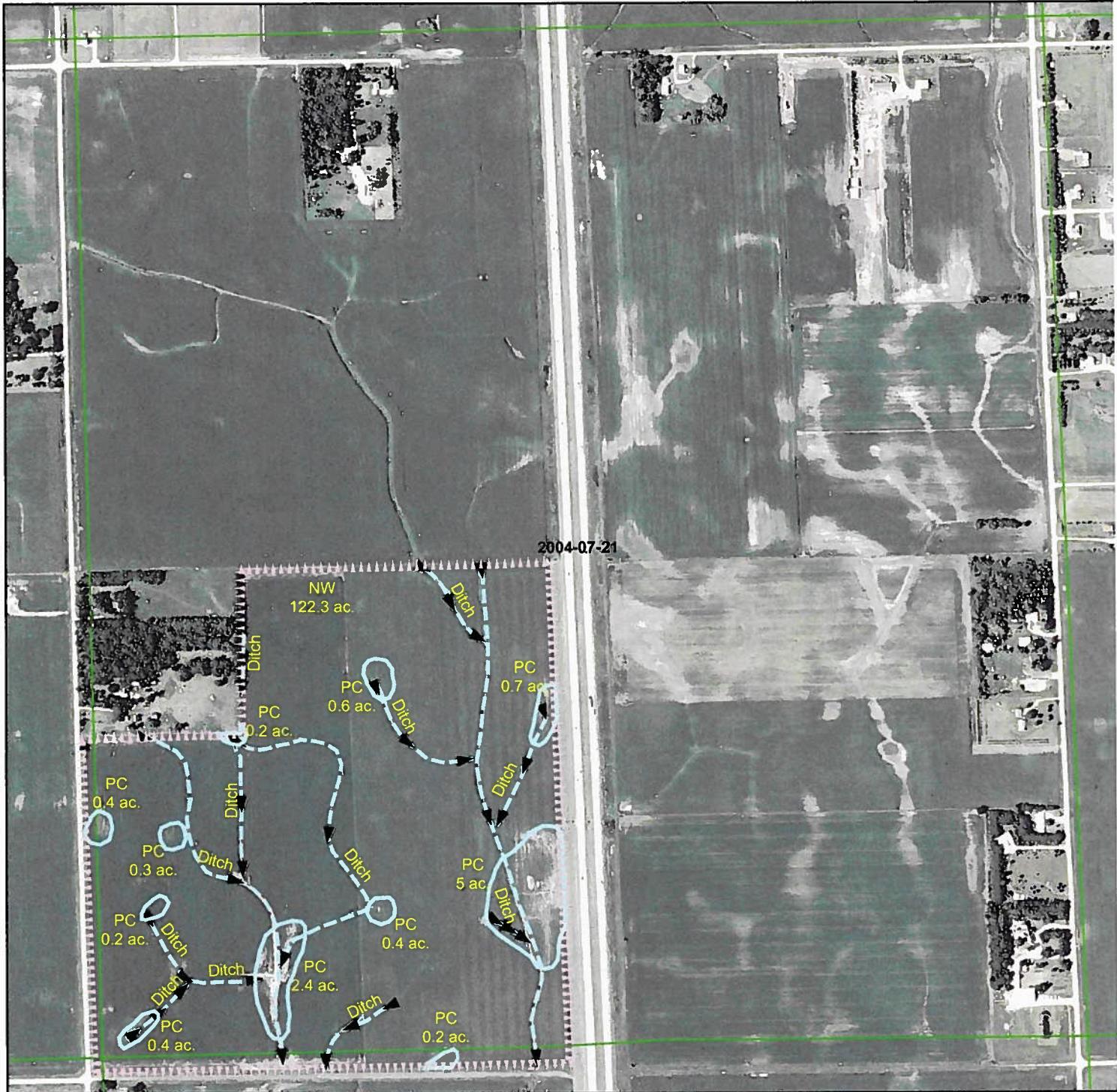
Signature	Designated Conservationist	Date
		12-27-17

The U.S. Department of Agriculture (USDA) prohibits discrimination in all its programs and activities on the basis of race, color, national origin, gender, religion, age, disability, political beliefs, sexual orientation, and marital or family status. (Not all prohibited bases apply to all programs.) Persons with disabilities who require alternative means for communication of program information (Braille, large print, audiotape, etc.) should contact USDA's TARGET Center at 202-720-2600 (voice and TDD). To file a complaint of discrimination, write USDA, Assistant Secretary for Civil Rights, 1400 Independence Avenue, S.W., Stop 9410, Washington, DC 20250-9410, or call toll-free at (866) 632-9992 (English) or (800) 877-8339 (TDD) or (866) 377-8642 (English Federal-relay) or (800) 845-6136 (Spanish Federal-relay). USDA is an equal opportunity provider and employer.

Certified Wetland Determination

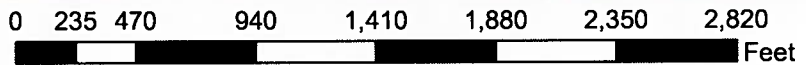
Field Office: Canton FO
 Certified By: Andrew Champa
 Legal Desc: SW4 7-99-50

Agency: USDA-NRCS
 Certified Date: 12-27-17
 Tract: 2000



Legend

- Certified Wetland Determination Boundary
- Wetlands
- Wetlands Ditch
- Ditch
- NI
- NI/Ditch
- Tile



- W Wetland
 - FW Farmed Wetland Drained or modified & cropped prior to 12-23-1985, but still meets wetland criteria
 - PC Prior Converted
 - NW Non Wetland
 - NI Not Inventoried Potential Waters of the US
- See NRCS CPA-O26E for definitions and additional info.

