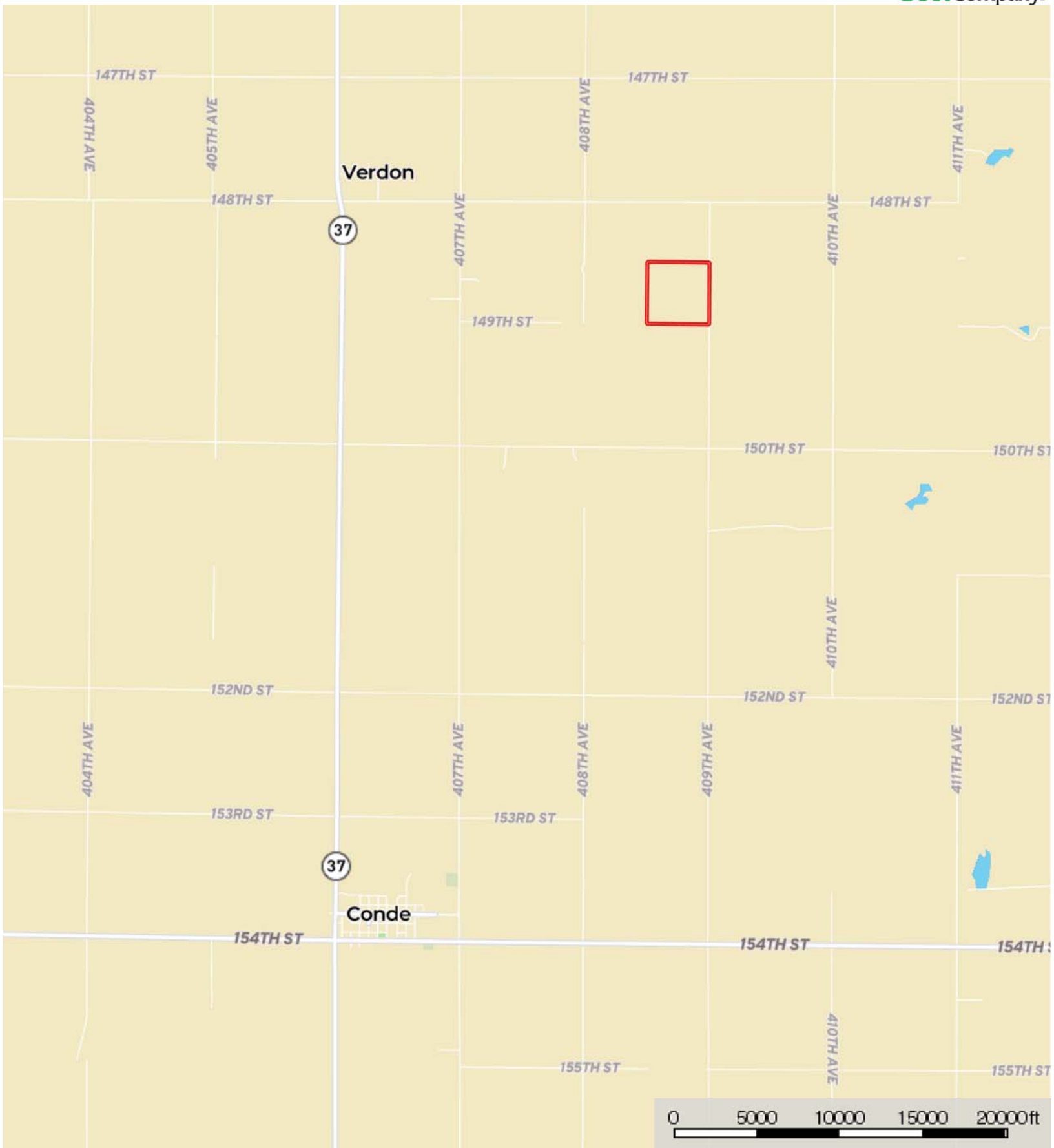


Wettstein

Spink County, South Dakota, 160.7 AC +/-



 Boundary



 Boundary

Wettstein

Spink County, South Dakota, 160.7 AC +/-



 Boundary

Boundary 160.7 ac

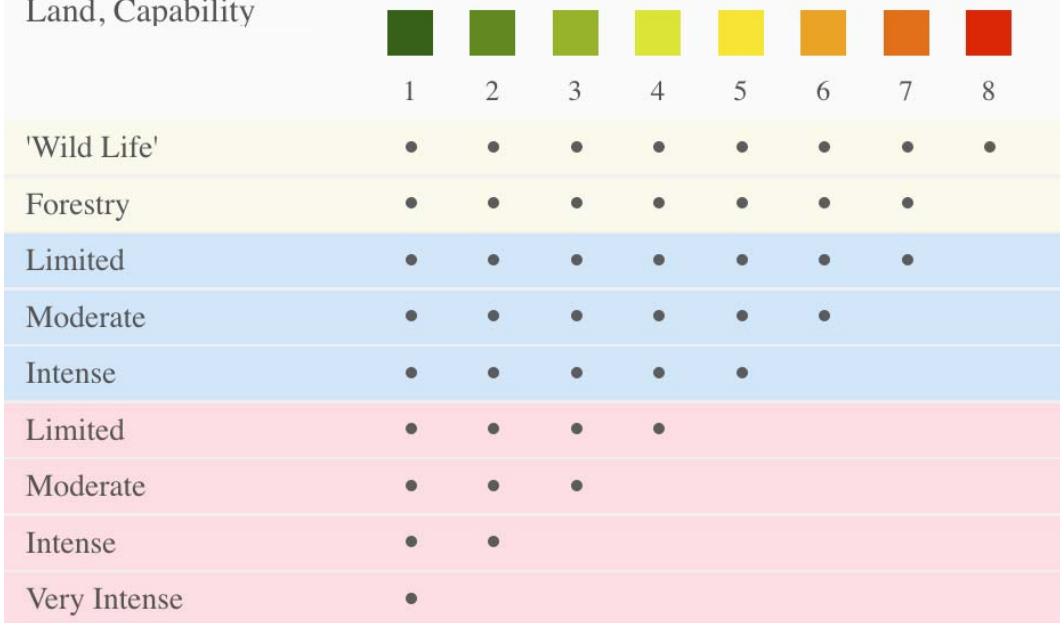
SOIL CODE	SOIL DESCRIPTION	ACRES	%	CPI	CAP
G561A	La Prairie loam, 0 to 2 percent slopes, occasionally flooded	0.7	0.44	84	2c
G193A	Aastad-Forman loams, 0 to 3 percent slopes	19.2	11.96	92	2c
G208B	Peever-Buse clay loams, 1 to 6 percent slopes	50.6	31.5	63	3e
G124A	Cresbard-Cavour loams, 0 to 3 percent slopes	13.2	8.22	58	3s
G017A	Heil silt loam, till substratum, 0 to 1 percent slopes	3.0	1.85	11	6s
G574A	Fluvaquents, channeled-La Prairie-Holmquist complex, 0 to 2 percent slopes, frequently flooded	13.2	8.23	33	6w
G193C	Forman-Buse-Langhei loams, 6 to 9 percent slopes	3.5	2.19	52	3e
G126A	Cresbard-Cavour-Heil complex, 0 to 3 percent slopes	57.2	35.6	45	3s
TOTALS		160.7	100%	56.07	3.18

Capability Legend

Increased Limitations and Hazards

Decreased Adaptability and Freedom of Choice Users

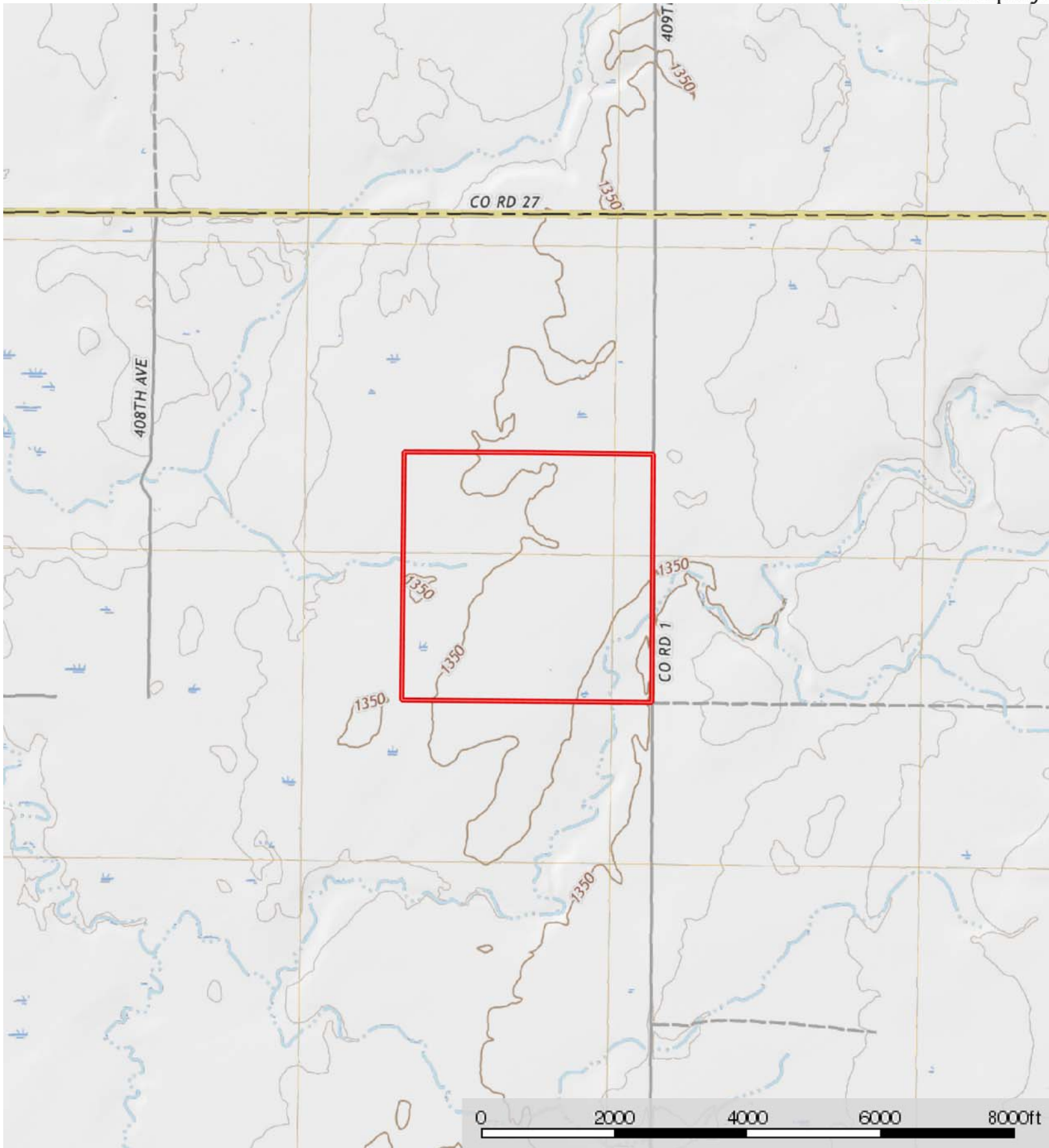
Land, Capability




Grazing Cultivation

(c) climatic limitations (e) susceptibility to erosion

(s) soil limitations within the rooting zone (w) excess of water



 Boundary