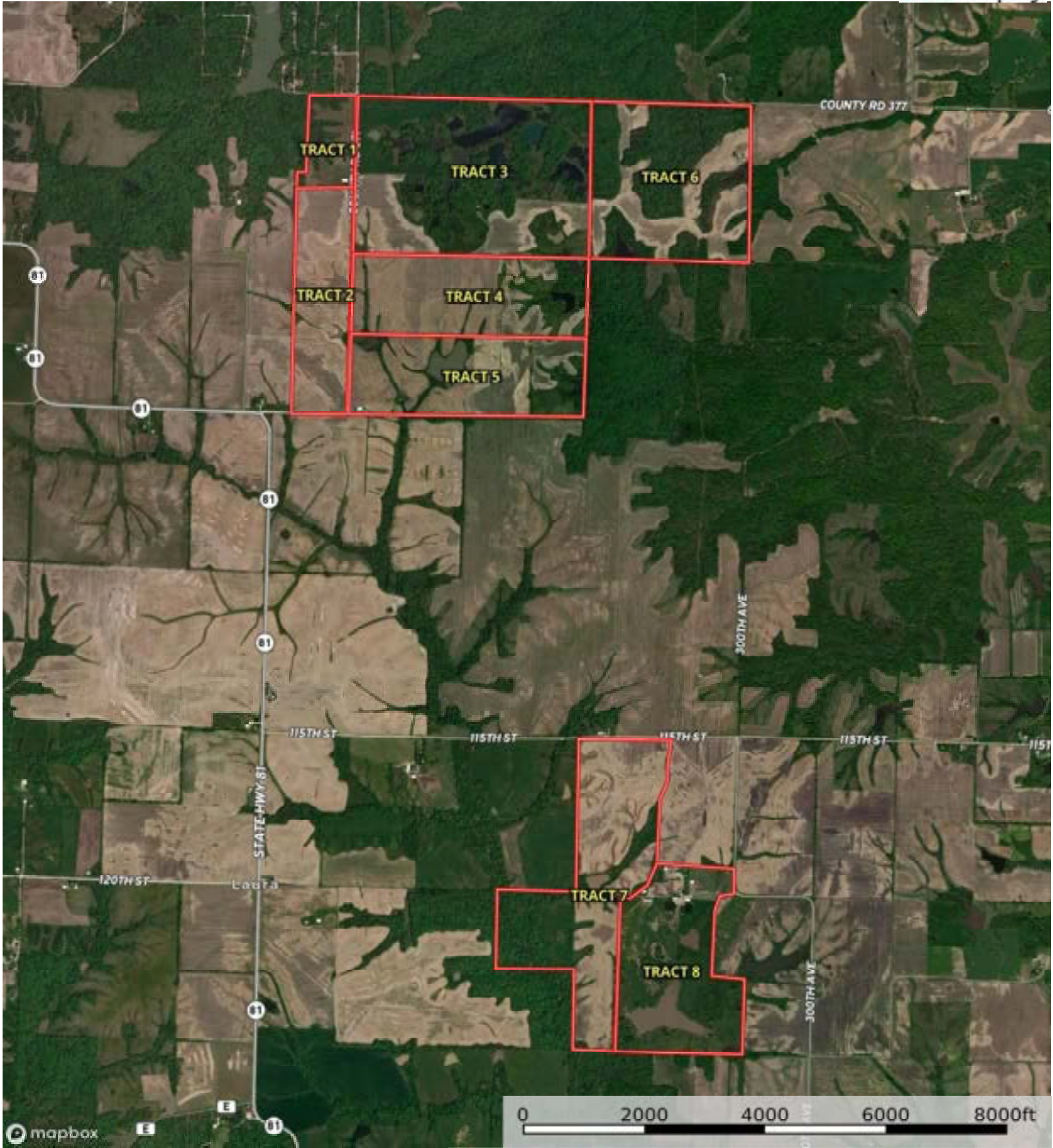


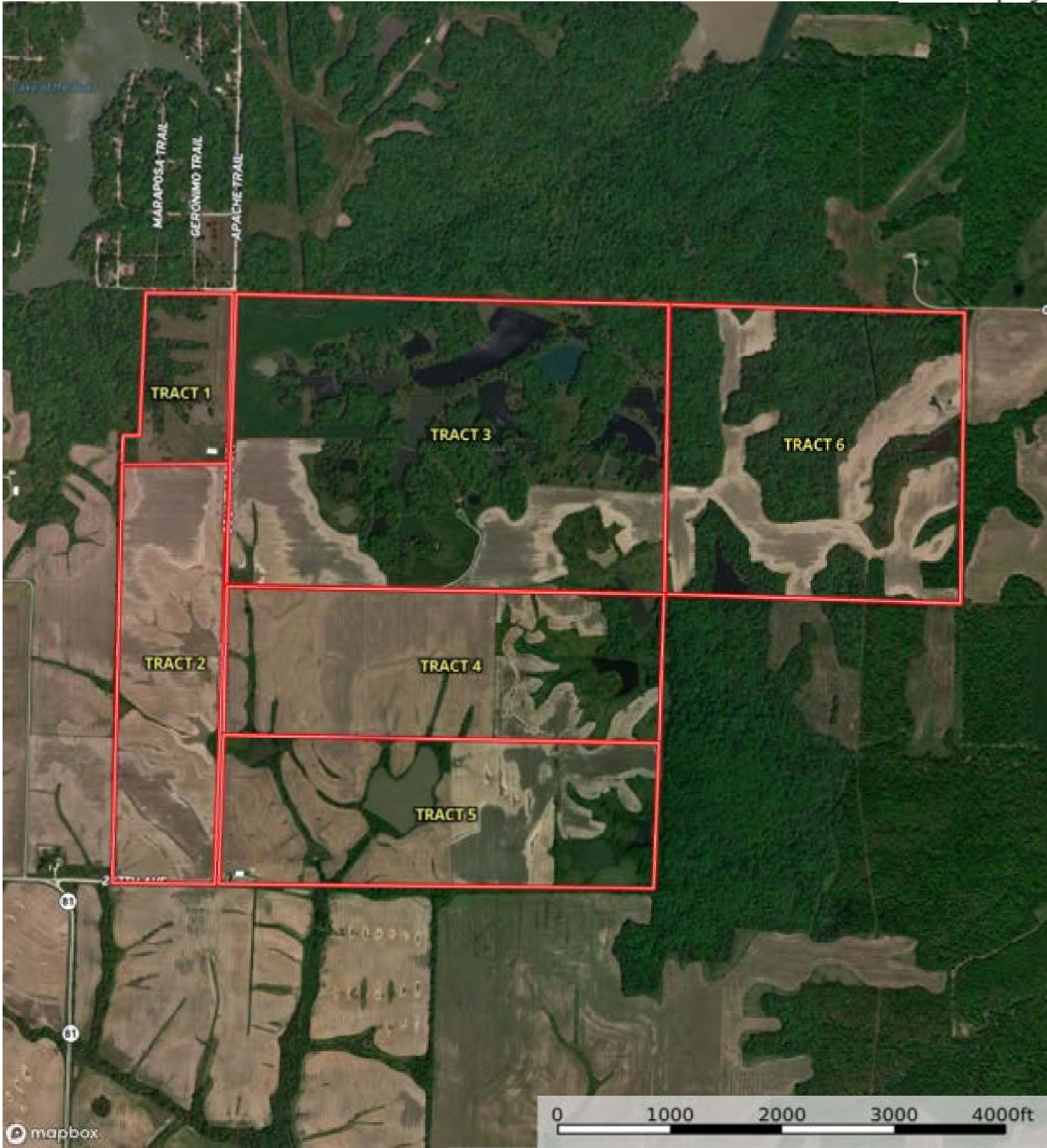
Boundary



Boundary

A-20513

Lewis County, Clark County, Missouri, 1044.8 AC +/-



Boundary



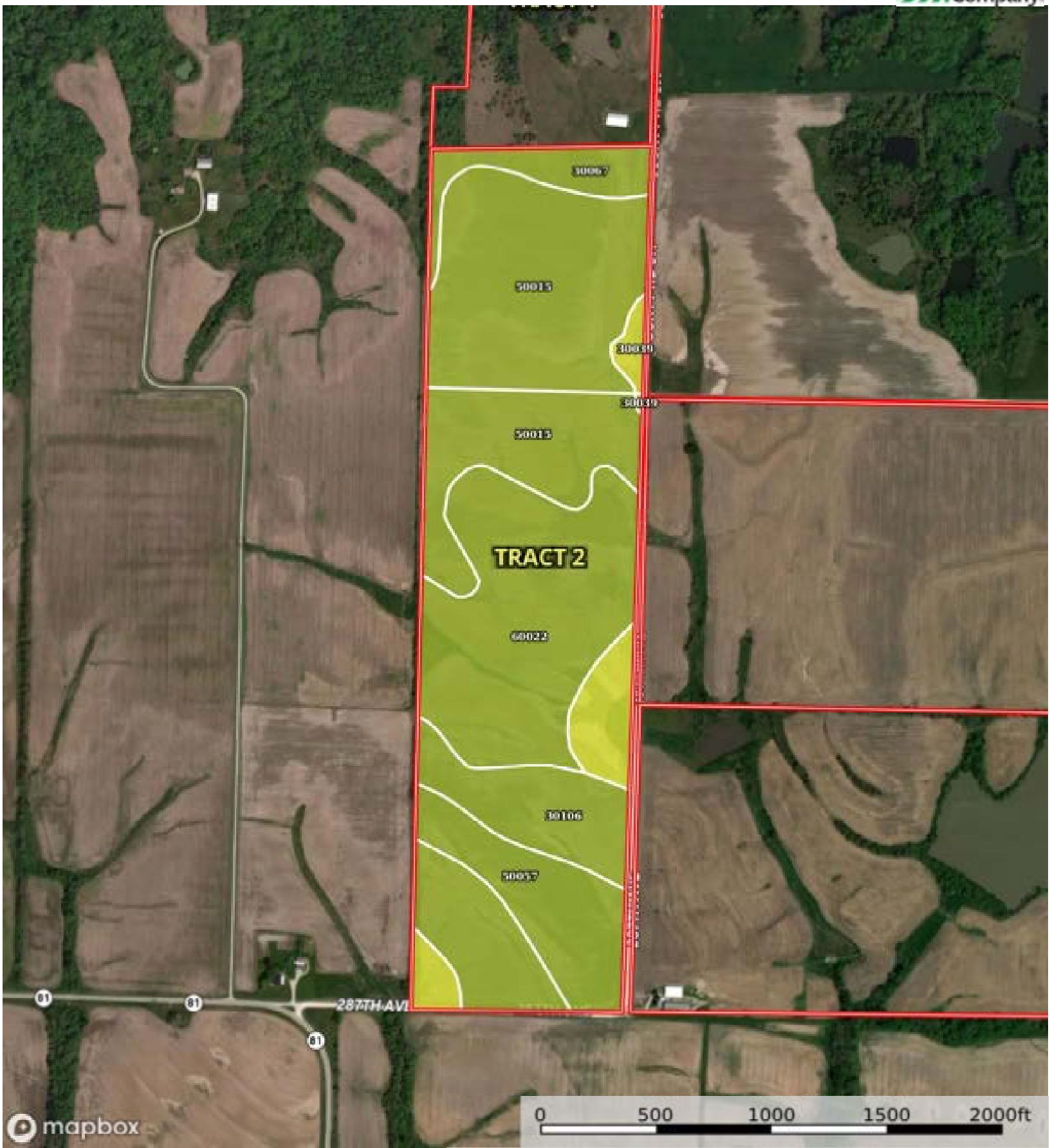
Boundary

|  Boundary 28.66 ac

SOIL CODE	SOIL DESCRIPTION	ACRES	%	CPI	NCCPI	CAP
50042	Lindley loam, 20 to 35 percent slopes, eroded	10.08	35.17	0	46	6e
30067	Gorin silt loam, 3 to 9 percent slopes, eroded	9.66	33.71	0	70	3e
30097	Keswick loam, 12 to 18 percent slopes, eroded	8.31	29.0	0	48	6e
50015	Adco silt loam, 1 to 5 percent slopes	0.61	2.13	0	63	3e
TOTALS		28.66(*)	100%	-	55.03	4.92

(*) Total acres may differ in the second decimal compared to the sum of each acreage soil. This is due to a round error because we only show the acres of each soil with two decimal.





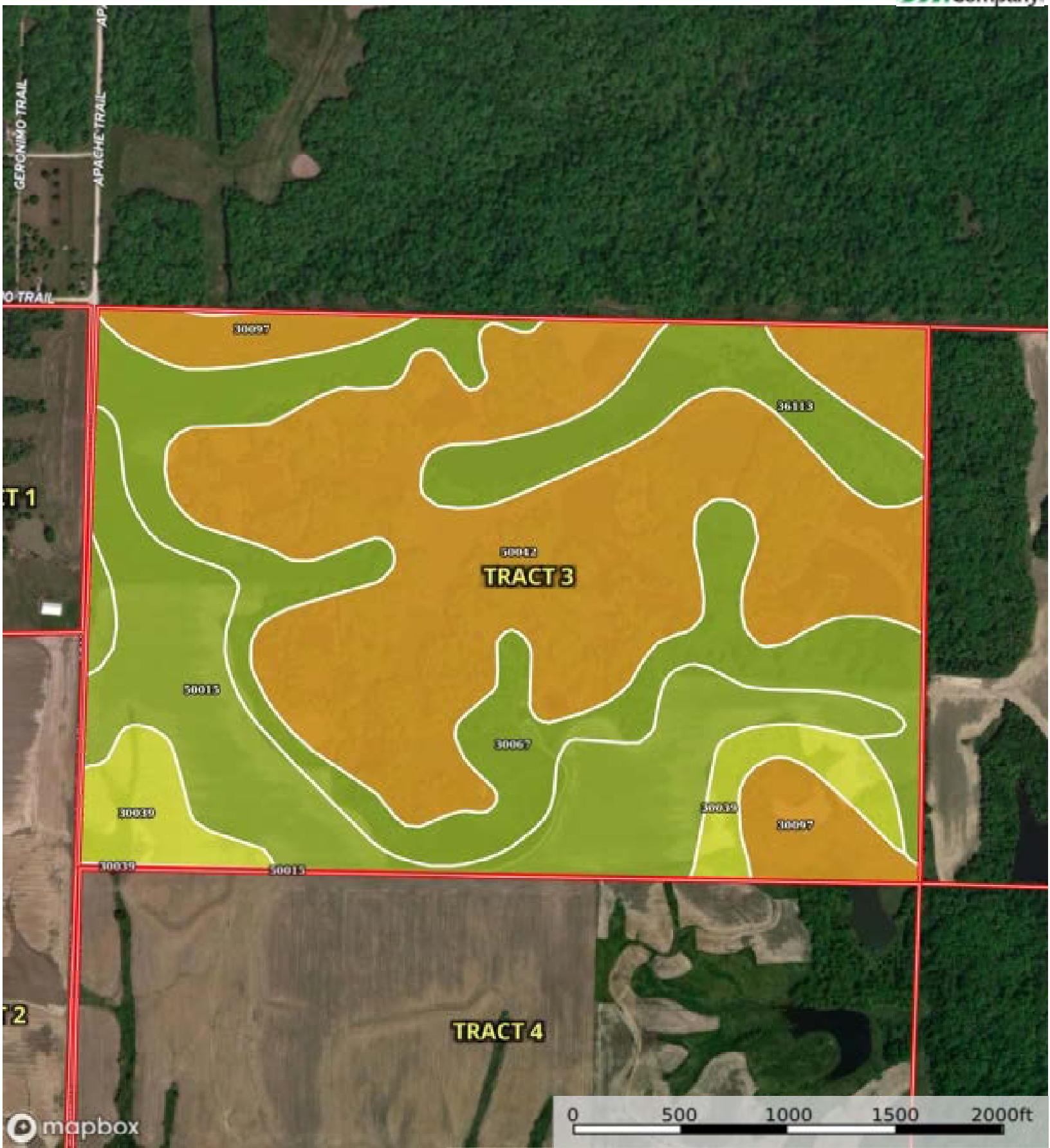
Boundary

|  Boundary 80.68 ac

SOIL CODE	SOIL DESCRIPTION	ACRES	%	CPI	NCCPI	CAP
50015	Adco silt loam, 1 to 5 percent slopes	28.55	35.38	0	63	3e
60022	Leonard silt loam, 1 to 6 percent slopes, eroded	21.26	26.35	0	61	3e
30106	Kilwinning silt loam, 1 to 5 percent slopes	13.18	16.33	0	65	3e
50057	Putnam silt loam, 1 to 3 percent slopes	8.34	10.34	0	65	3w
30039	Armstrong loam, 9 to 14 percent slopes, eroded	5.35	6.63	0	63	4e
30067	Gorin silt loam, 3 to 9 percent slopes, eroded	4	4.96	0	70	3e
TOTALS		80.68(*)	100%	-	63.35	3.07

(*) Total acres may differ in the second decimal compared to the sum of each acreage soil. This is due to a round error because we only show the acres of each soil with two decimal.





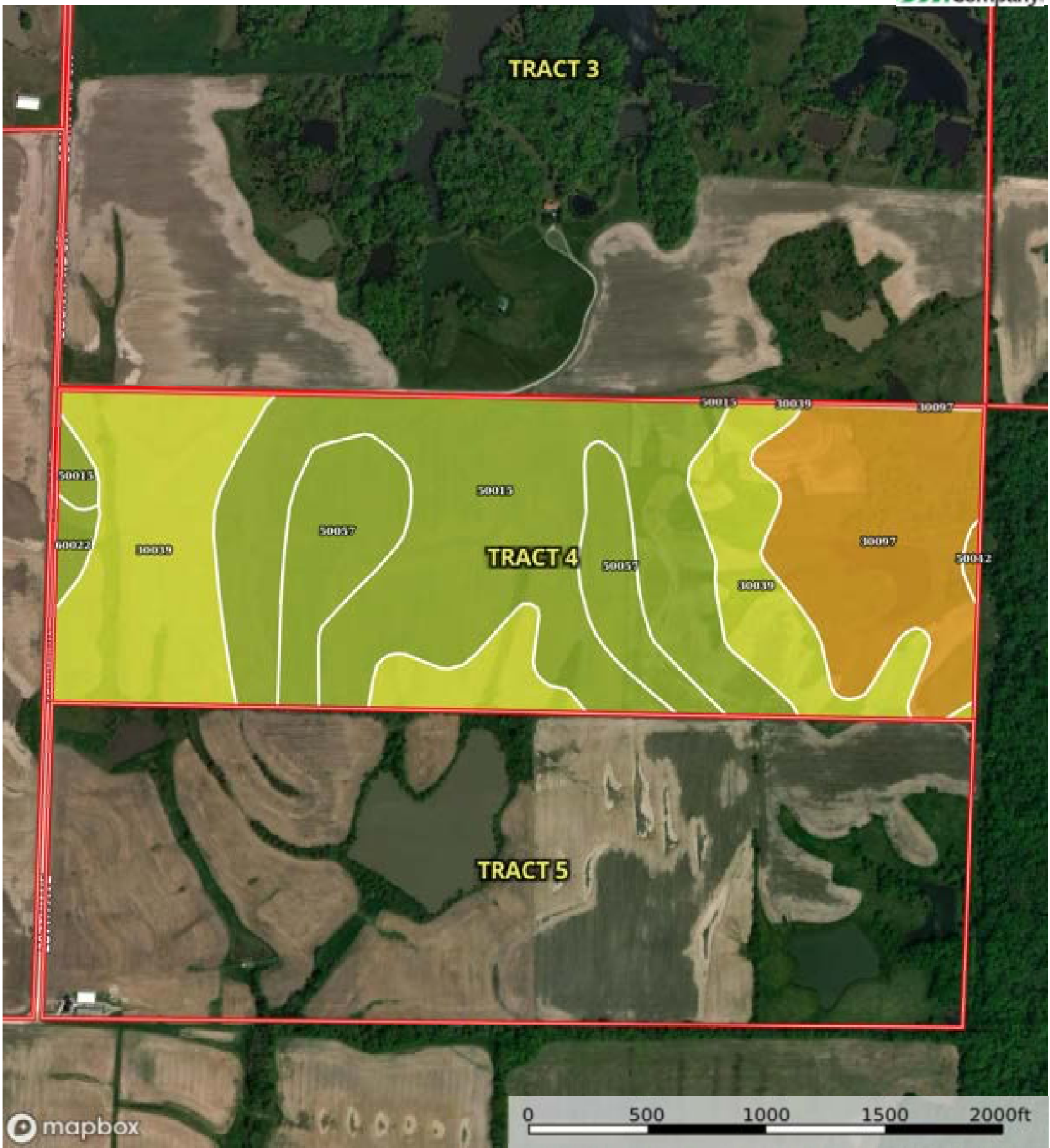
Boundary

|  Boundary 232.86 ac

SOIL CODE	SOIL DESCRIPTION	ACRES	%	CPI	NCCPI	CAP
50042	Lindley loam, 20 to 35 percent slopes, eroded	97.64	41.93	0	46	6e
30067	Gorin silt loam, 3 to 9 percent slopes, eroded	48.4	20.79	0	70	3e
50015	Adco silt loam, 1 to 5 percent slopes	41.5	17.82	0	63	3e
36113	Klum fine sandy loam, 1 to 3 percent slopes, frequently floded	17.03	7.31	0	61	3w
30039	Armstrong loam, 9 to 14 percent slopes, eroded	14.63	6.28	0	63	4e
30097	Keswick loam, 12 to 18 percent slopes, eroded	13.66	5.87	0	48	6e
TOTALS		232.86(*)	100%	-	56.3	4.5

(*) Total acres may differ in the second decimal compared to the sum of each acreage soil. This is due to a round error because we only show the acres of each soil with two decimal.





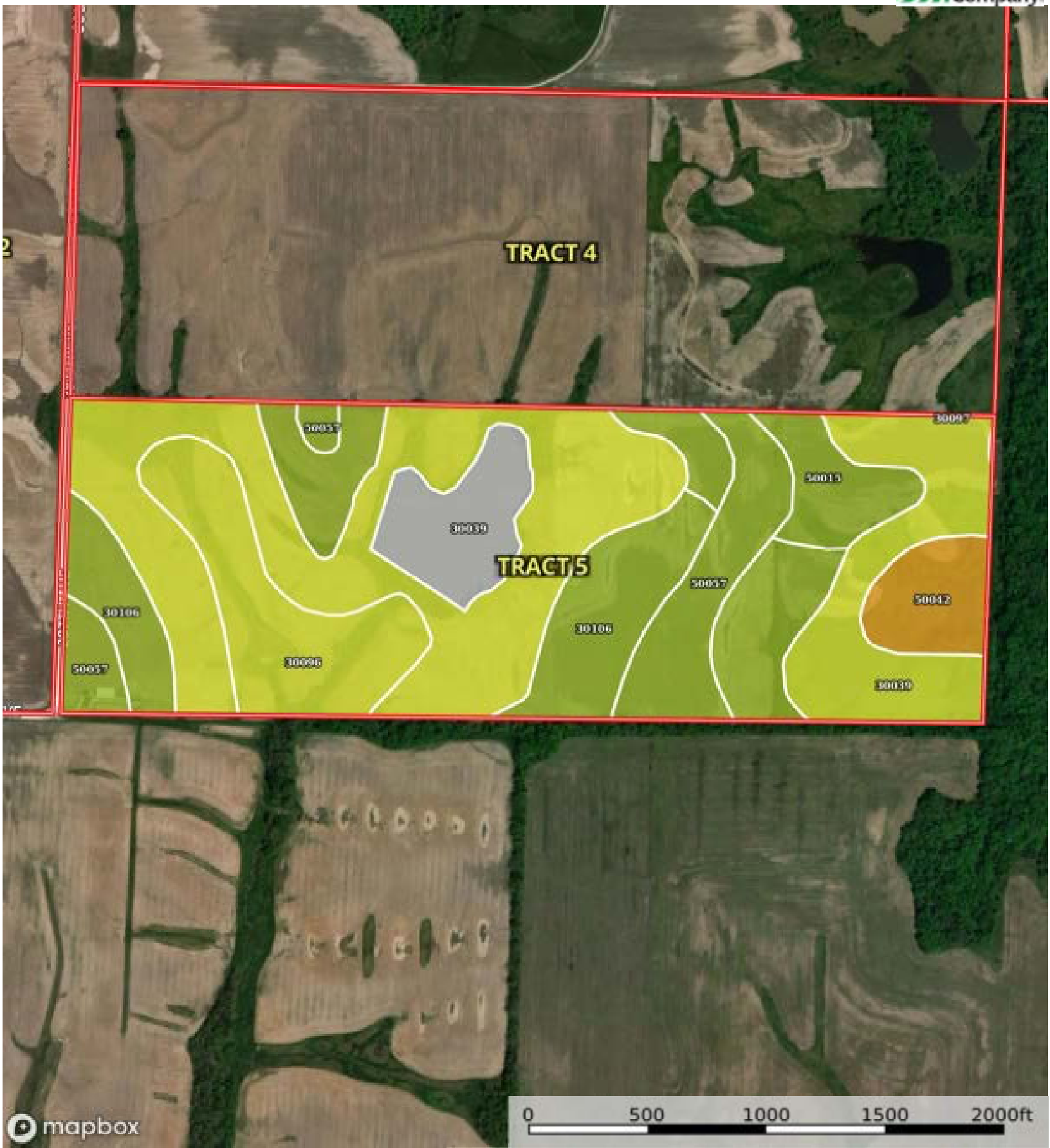
 Boundary

|  Boundary 119.18 ac

SOIL CODE	SOIL DESCRIPTION	ACRES	%	CPI	NCCPI	CAP
50015	Adco silt loam, 1 to 5 percent slopes	45.74	38.38	0	63	3e
30039	Armstrong loam, 9 to 14 percent slopes, eroded	35.52	29.8	0	63	4e
30097	Keswick loam, 12 to 18 percent slopes, eroded	22.03	18.48	0	48	6e
50057	Putnam silt loam, 1 to 3 percent slopes	14.21	11.92	0	65	3w
60022	Leonard silt loam, 1 to 6 percent slopes, eroded	1.28	1.07	0	61	3e
50042	Lindley loam, 20 to 35 percent slopes, eroded	0.4	0.34	0	46	6e
TOTALS		119.18(*)	100%	-	60.39	3.86

(*) Total acres may differ in the second decimal compared to the sum of each acreage soil. This is due to a round error because we only show the acres of each soil with two decimal.





Boundary

|  Boundary 117.75 ac

SOIL CODE	SOIL DESCRIPTION	ACRES	%	CPI	NCCPI	CAP
30039	Armstrong loam, 9 to 14 percent slopes, eroded	48.77	41.41	0	63	4e
30106	Kilwinning silt loam, 1 to 5 percent slopes	19.65	16.69	0	65	3e
30096	Keswick clay loam, Audrain-Shelby plain, 9 to 14 percent slopes, eroded	13.22	11.23	0	57	4e
50057	Putnam silt loam, 1 to 3 percent slopes	11.98	10.17	0	65	3w
50015	Adco silt loam, 1 to 5 percent slopes	11.71	9.94	0	63	3e
99001	Water	7.09	6.02	0	-	-
50042	Lindley loam, 20 to 35 percent slopes, eroded	5.28	4.48	0	46	6e
30097	Keswick loam, 12 to 18 percent slopes, eroded	0.05	0.04	0	48	6e
TOTALS		117.75(*)	100%	-	58.29	3.7

(*) Total acres may differ in the second decimal compared to the sum of each acreage soil. This is due to a round error because we only show the acres of each soil with two decimal.



Lewis County, Clark County, Missouri, 1044.8 AC +/-



The information contained herein was obtained from sources deemed to be reliable.

Land id™ Services makes no warranties or guarantees as to the completeness or accuracy thereof.

|  Boundary 158.07 ac

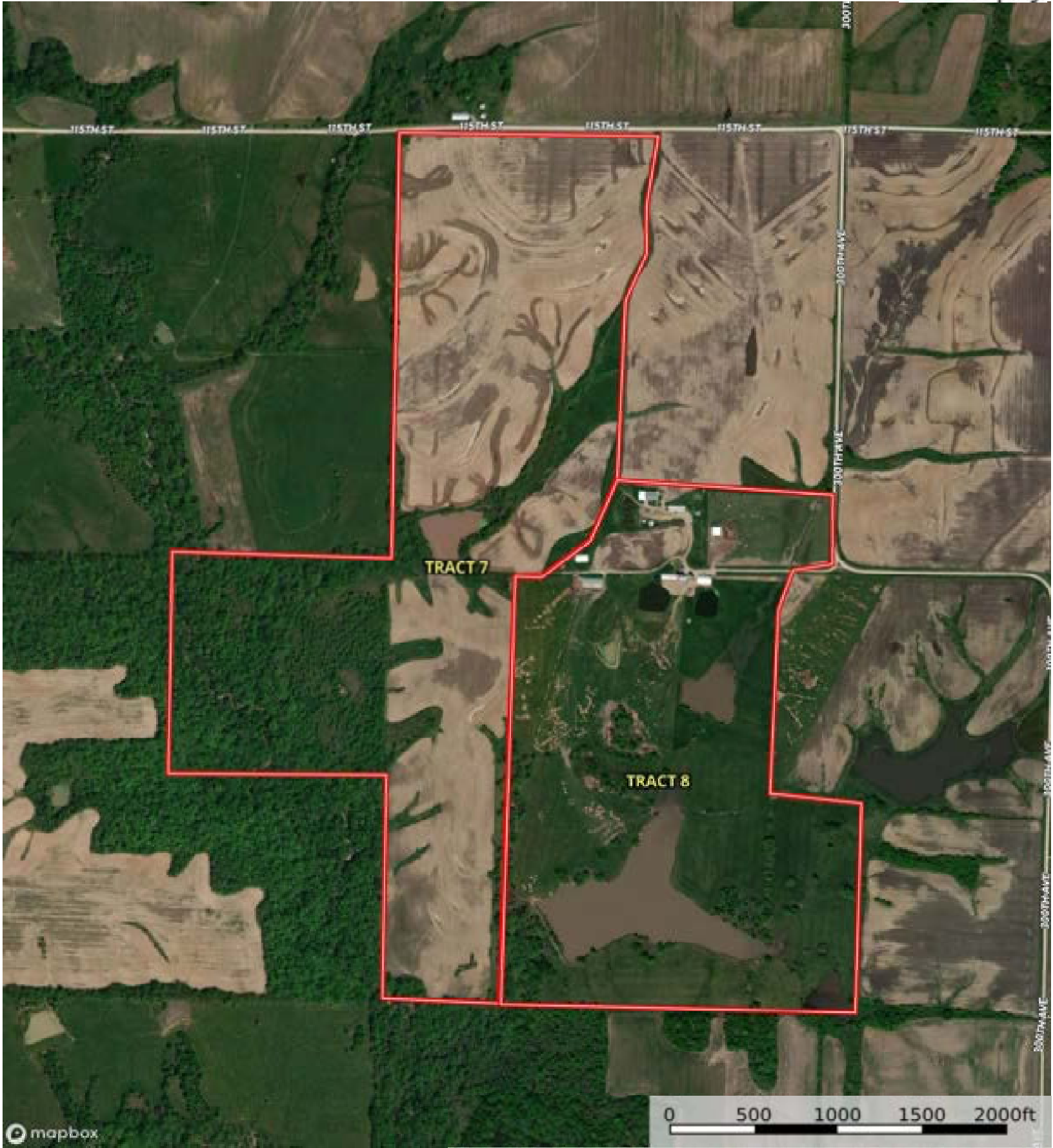
SOIL CODE	SOIL DESCRIPTION	ACRES	%	CPI	NCCPI	CAP
50042	Lindley loam, 20 to 35 percent slopes, eroded	63.1	39.92	0	46	6e
30067	Gorin silt loam, 3 to 9 percent slopes, eroded	57.06	36.1	0	70	3e
30097	Keswick loam, 12 to 18 percent slopes, eroded	24.24	15.33	0	48	6e
60248	Winfield silt loam, 5 to 12 percent slopes, eroded	13.6	8.6	0	74	4e
36113	Klum fine sandy loam, 1 to 3 percent slopes, frequently fllooded	0.07	0.04	0	61	3w
TOTALS		158.07(*)	100%	-	57.39	4.74

(*) Total acres may differ in the second decimal compared to the sum of each acreage soil. This is due to a round error because we only show the acres of each soil with two decimal.



A-20513

Lewis County, Clark County, Missouri, 1044.8 AC +/-



Boundary



Farmers
National
Company.

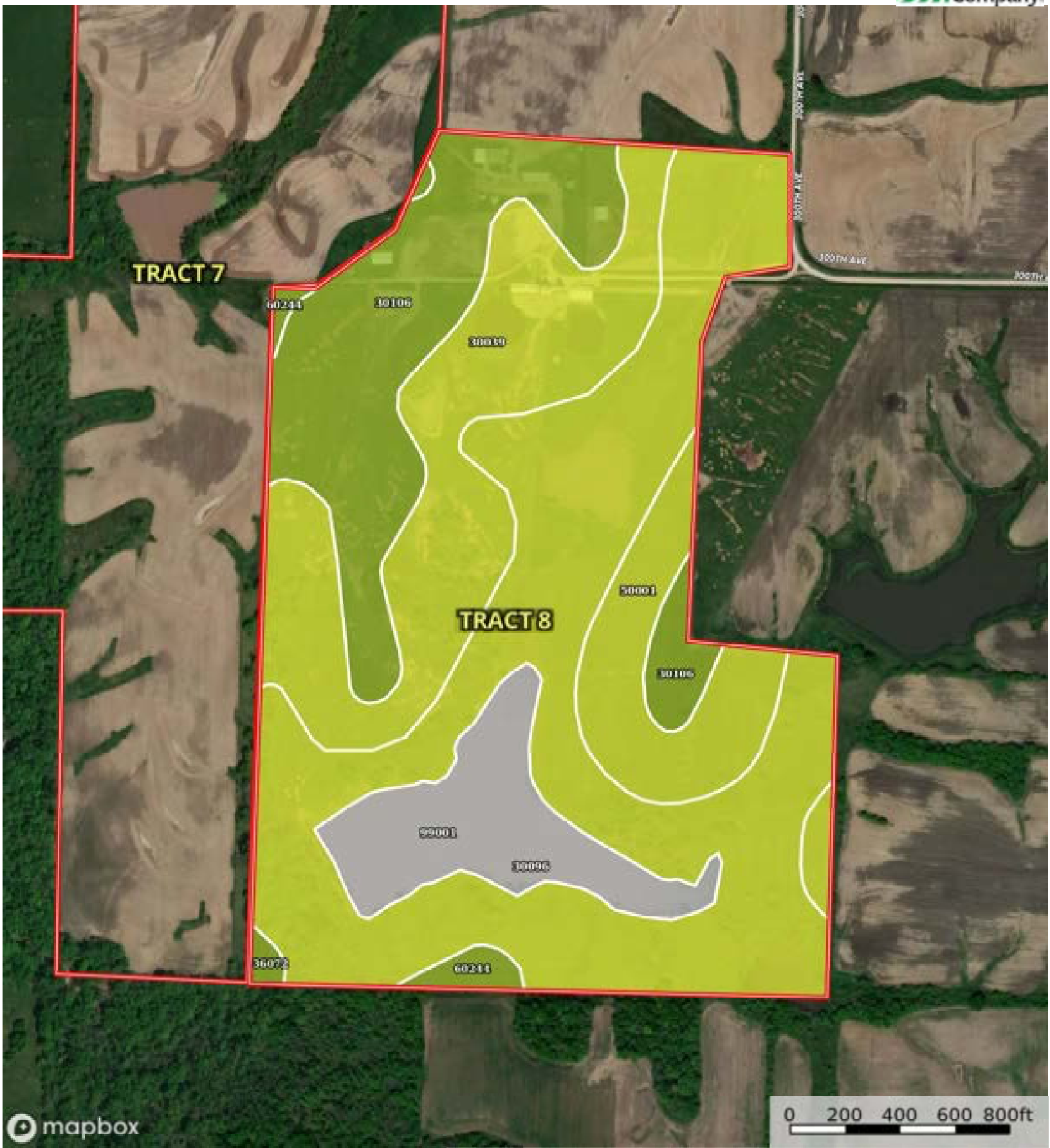


|  Boundary 163.05 ac

SOIL CODE	SOIL DESCRIPTION	ACRES	%	CPI	NCCPI	CAP
30096	Keswick clay loam, Audrain-Shelby plain, 9 to 14 percent slopes, eroded	43.39	26.61	0	57	4e
30106	Kilwinning silt loam, 1 to 5 percent slopes	32.33	19.83	0	65	3e
60244	Winfield silt loam, 5 to 10 percent slopes, eroded	22.79	13.98	0	79	3e
36072	Blackoar silt loam, 1 to 4 percent slopes, frequently flooded	22.18	13.6	0	70	3w
50001	Armstrong loam, 5 to 9 percent slopes, eroded	15.25	9.35	0	66	4e
30039	Armstrong loam, 9 to 14 percent slopes, eroded	12.21	7.49	0	63	4e
60031	Winfield silt loam, 9 to 14 percent slopes, eroded	10.67	6.54	0	77	6e
50057	Putnam silt loam, 1 to 3 percent slopes	4.23	2.59	0	65	3w
TOTALS		163.05(*)	100%	-	66.23	3.63

(*) Total acres may differ in the second decimal compared to the sum of each acreage soil. This is due to a round error because we only show the acres of each soil with two decimal.





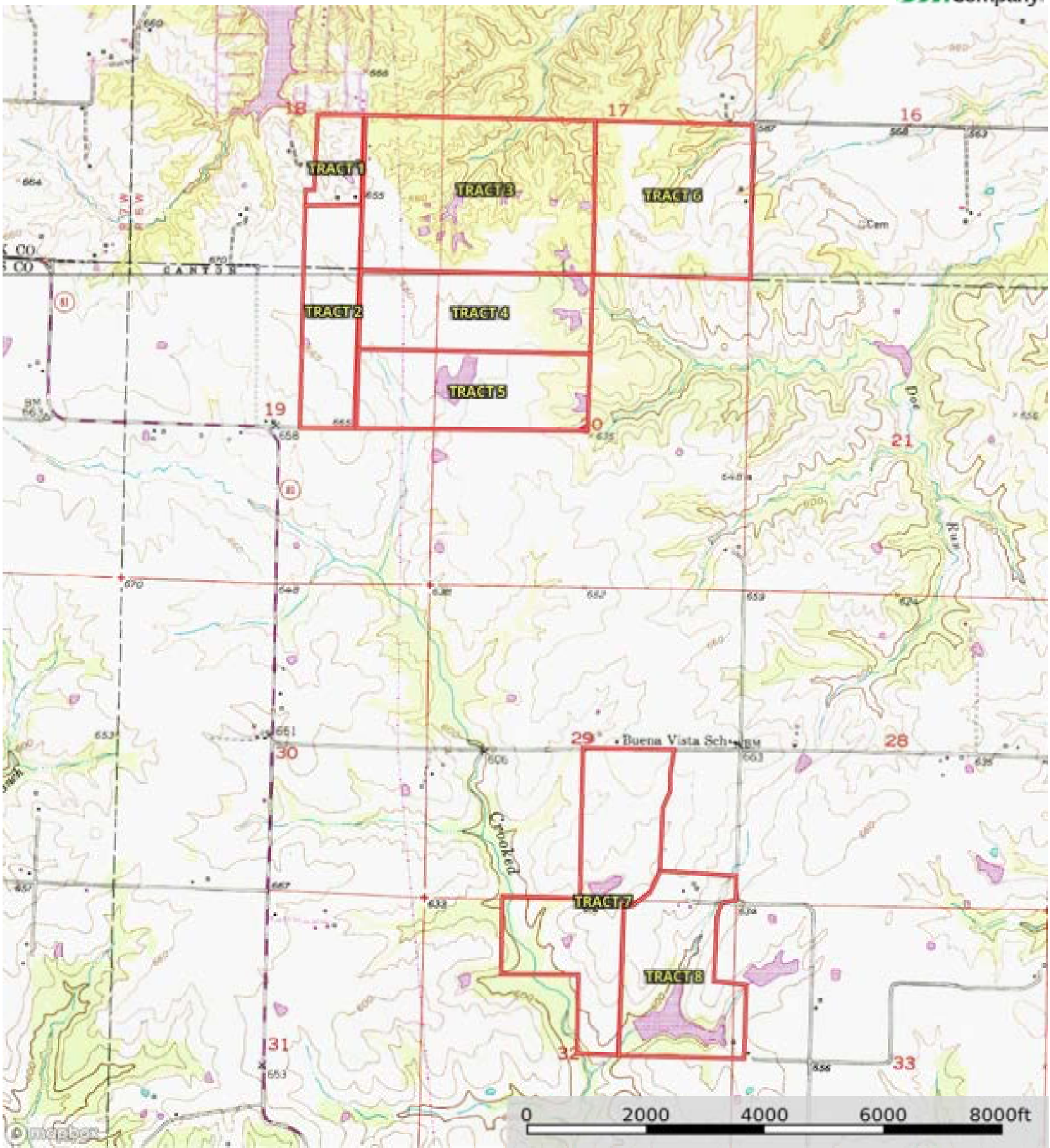
Boundary

|  Boundary 125.72 ac

SOIL CODE	SOIL DESCRIPTION	ACRES	%	CPI	NCCPI	CAP
30096	Keswick clay loam, Audrain-Shelby plain, 9 to 14 percent slopes, eroded	52.59	41.83	0	57	4e
30039	Armstrong loam, 9 to 14 percent slopes, eroded	25.16	20.01	0	63	4e
30106	Kilwinning silt loam, 1 to 5 percent slopes	23.45	18.65	0	65	3e
99001	Water	11.53	9.17	0	-	-
50001	Armstrong loam, 5 to 9 percent slopes, eroded	10.92	8.69	0	66	4e
60244	Winfield silt loam, 5 to 10 percent slopes, eroded	1.61	1.28	0	79	3e
36072	Blackoar silt loam, 1 to 4 percent slopes, frequently flooded	0.46	0.37	0	70	3w
TOTALS		125.72(*)	100%	-	55.58	3.78

(*) Total acres may differ in the second decimal compared to the sum of each acreage soil. This is due to a round error because we only show the acres of each soil with two decimal.





Boundary