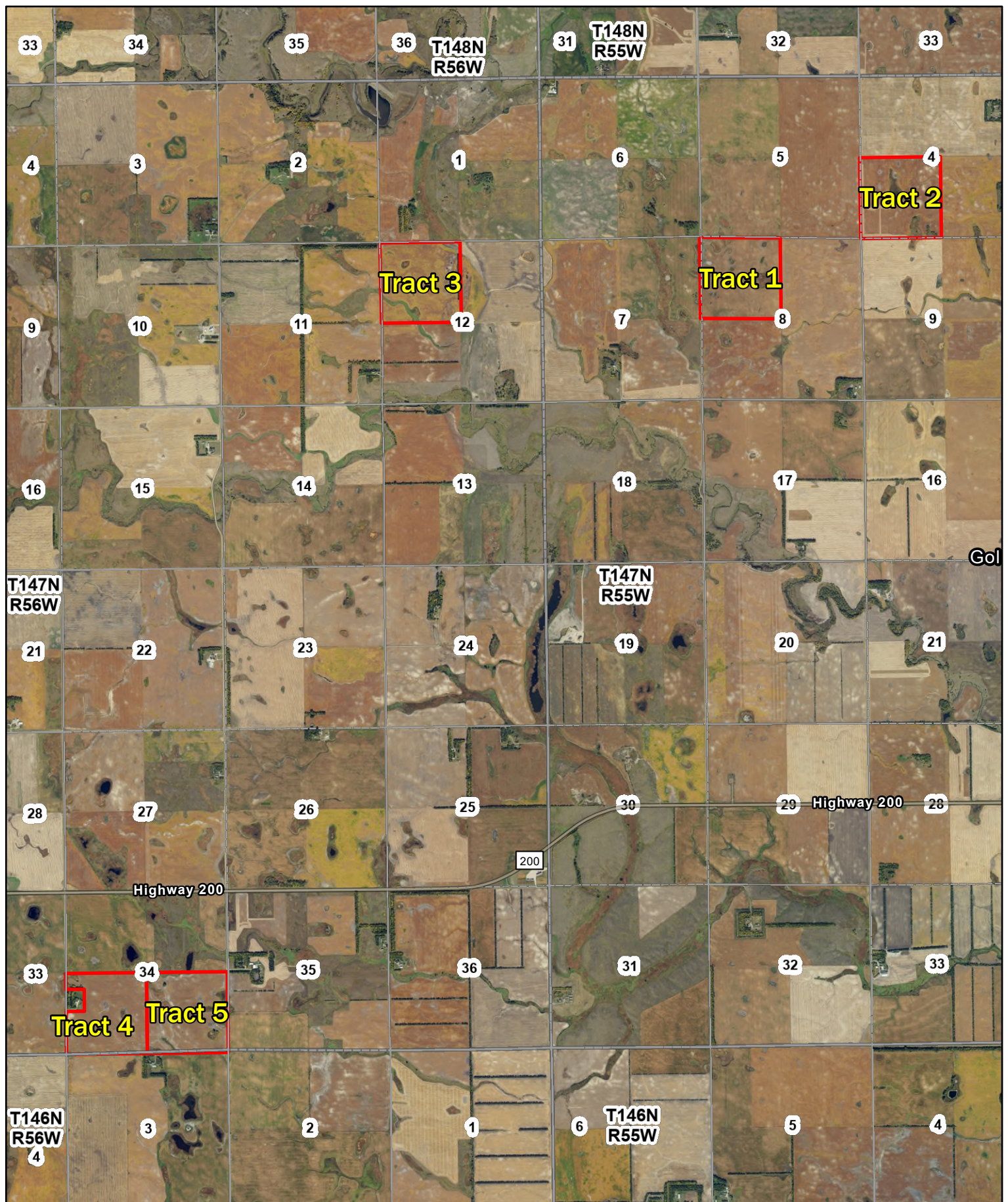


Windloss Family Trust
Steele County, North Dakota

Latitude: 47.5384° N
Longitude: 97.7608° W
Imagery Source: USDA NAIP
Soil Data Source: USDA NRCS
Boundaries are Approximate



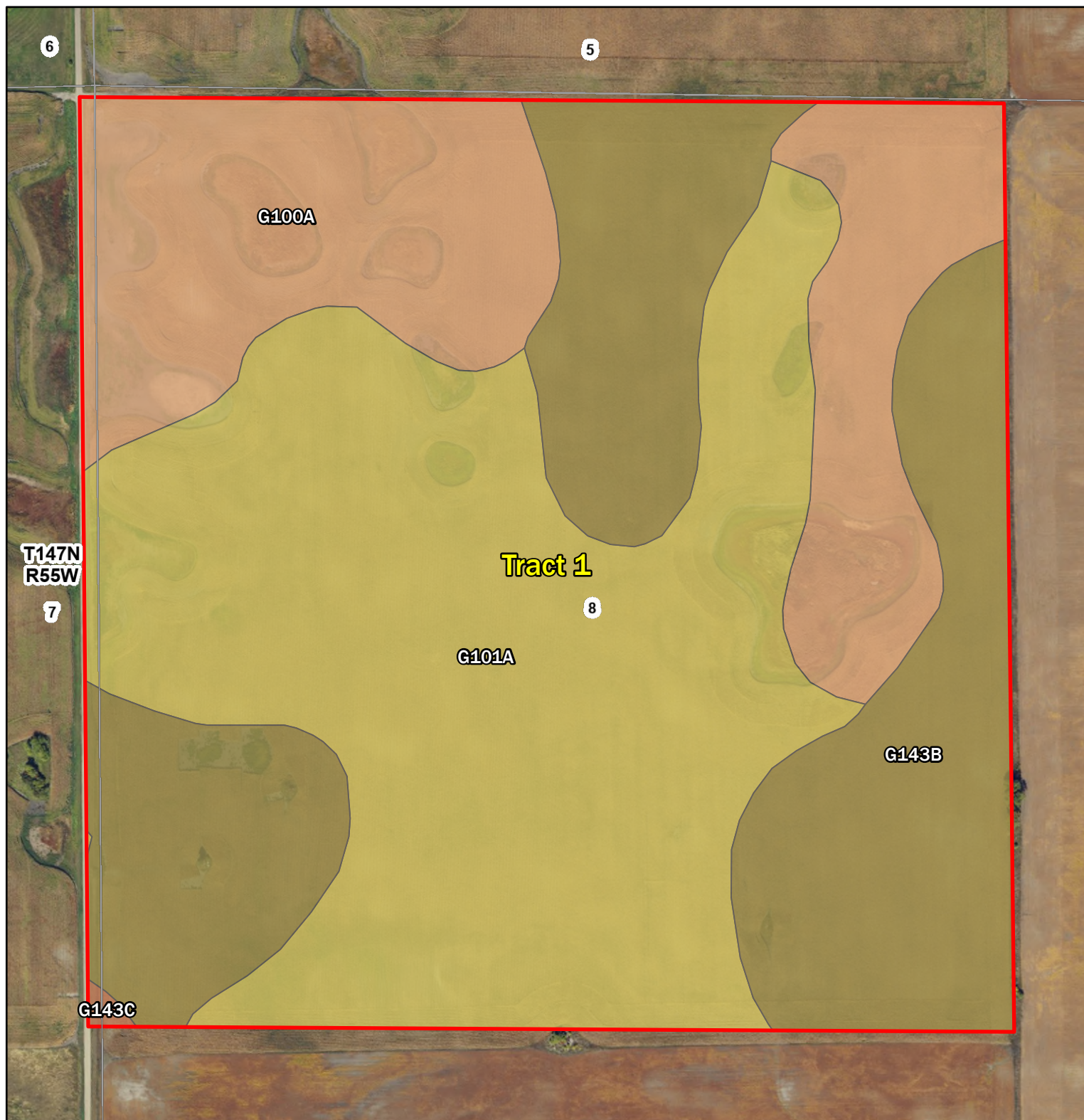
Windloss Family Trust
Steele County, North Dakota

Latitude: 47.5391° N
Longitude: 97.7343° W
Imagery Source: USDA NAIP
Soil Data Source: USDA NRCS
Boundaries are Approximate



Windloss Family Trust
Steele County, North Dakota

Latitude: 47.5681° N
Longitude: 97.7024° W
Imagery Source: USDA NAIP
Soil Data Source: USDA NRCS
Boundaries are Approximate

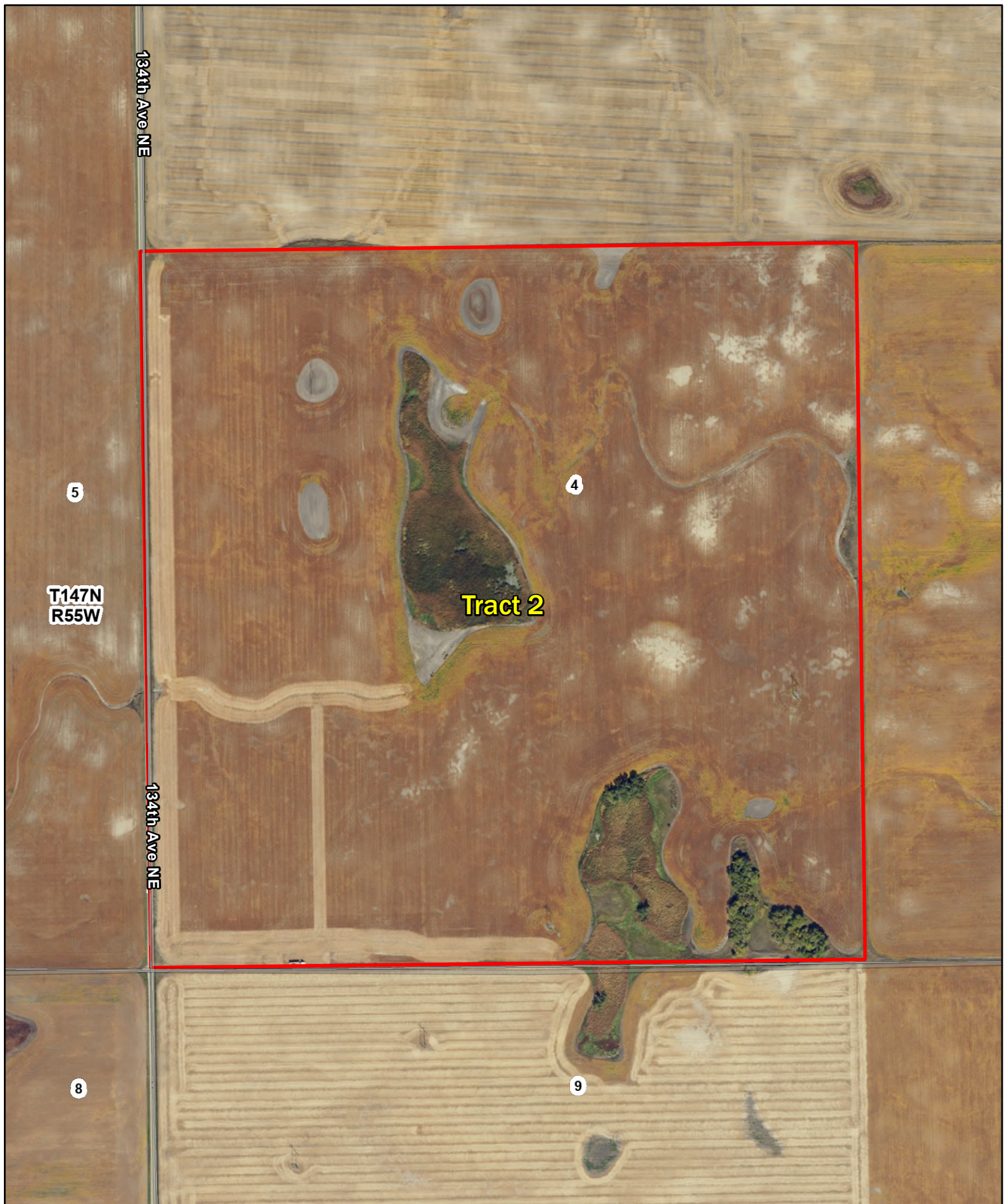


| Map Symbol | Name | Non-IRR LCC | PRODUCTIVITY INDEX | ACRES |
|------------|--|-------------|--------------------|-------|
| G101A | Hamerly-Wyard loams, 0 to 3 percent slopes | 2e | 74 | 71.9 |
| G143B | Barnes-Svea loams, 3 to 6 percent slopes | 2e | 79 | 50.2 |
| G100A | Hamerly-Tonka complex, 0 to 3 percent slopes | 2e | 61 | 37.9 |
| G143C | Barnes-Buse-Langhei loams, 6 to 9 percent slopes | 3e | 57 | 0.2 |
| TOTAL | | | 72.5 | 160.3 |



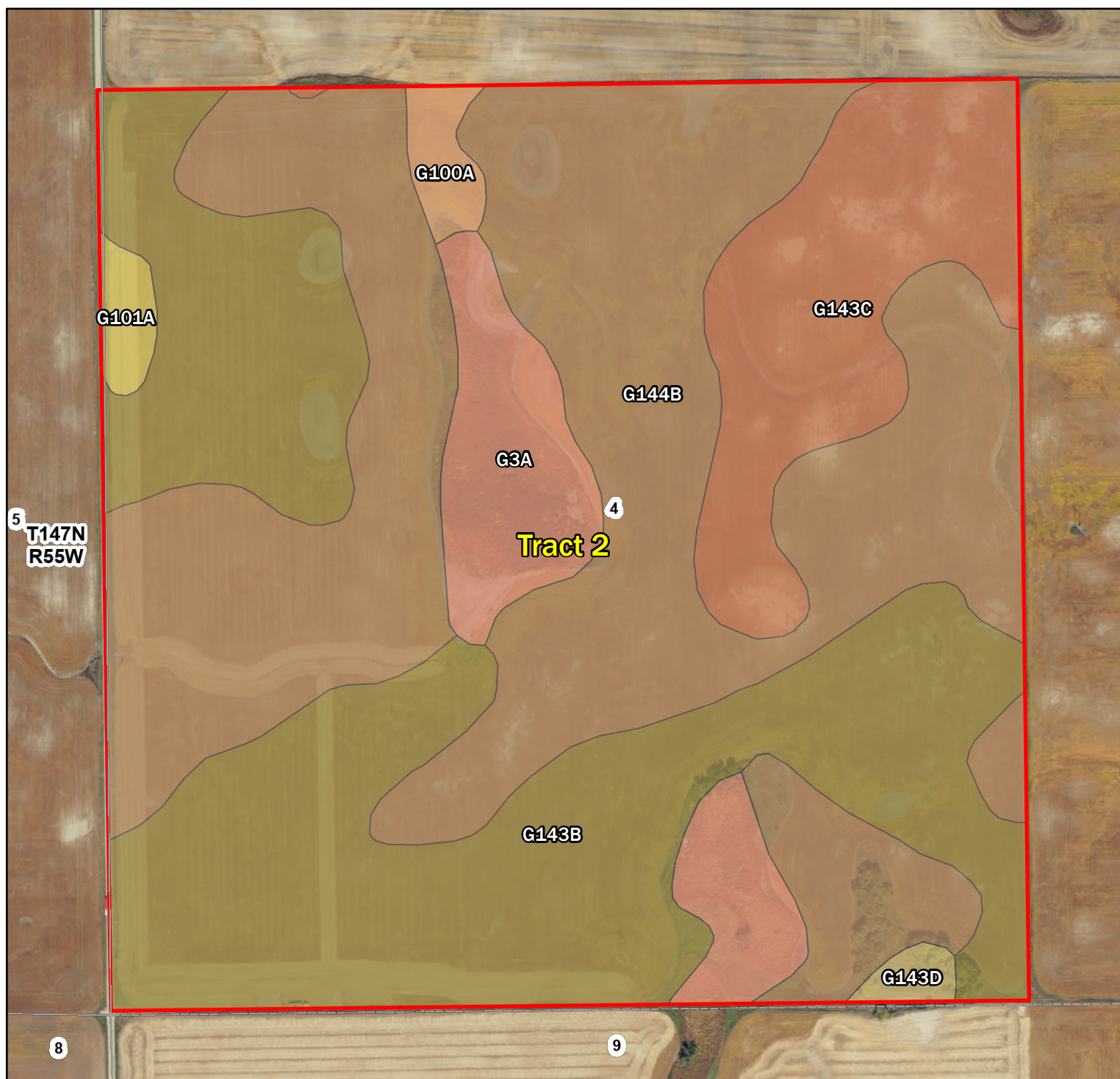
Windloss Family Trust
Steele County, North Dakota

Latitude: 47.5681° N
Longitude: 97.7024° W
Imagery Source: USDA NAIP
Soil Data Source: USDA NRCS
Boundaries are Approximate



Windloss Family Trust
Steele County, North Dakota

Latitude: 47.5751° N
Longitude: 97.6809° W
Imagery Source: USDA NAIP
Soil Data Source: USDA NRCS
Boundaries are Approximate

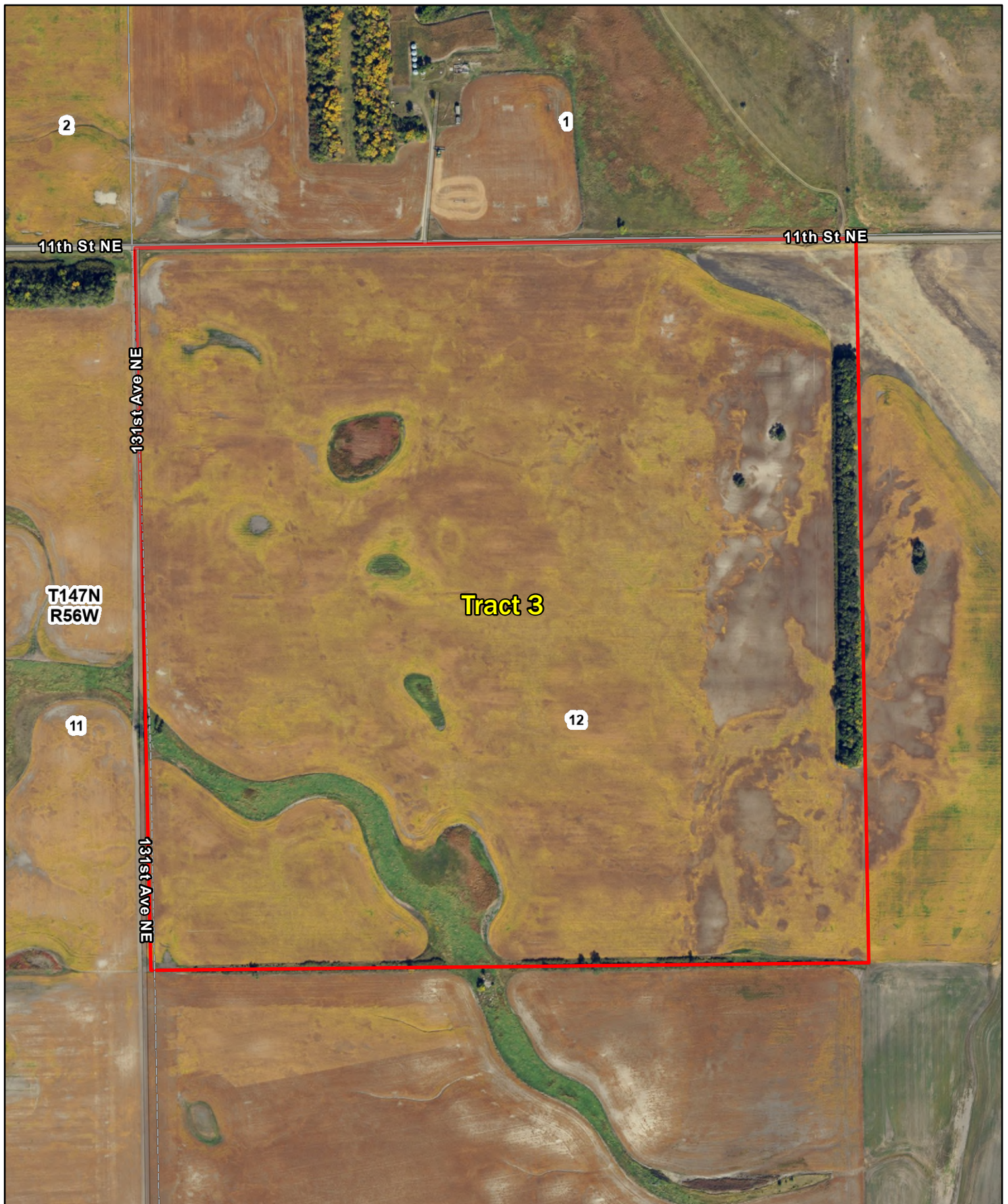


| Map Symbol | Name | Non-IRR LCC | PRODUCTIVITY INDEX | ACRES |
|------------|---|-------------|--------------------|-------|
| G144B | Barnes-Buse loams, 3 to 6 percent slopes | 2e | 71 | 72 |
| G143B | Barnes-Svea loams, 3 to 6 percent slopes | 2e | 79 | 55 |
| G143C | Barnes-Buse-Langhei loams, 6 to 9 percent slopes | 3e | 57 | 17.5 |
| G3A | Parnell silty clay loam, 0 to 1 percent slopes | 5w | 25 | 11.6 |
| G100A | Hamerly-Tonka complex, 0 to 3 percent slopes | 2e | 61 | 1.7 |
| G101A | Hamerly-Wyard loams, 0 to 3 percent slopes | 2e | 74 | 1.4 |
| G143D | Barnes-Buse-Langhei loams, 9 to 15 percent slopes | 4e | 41 | 0.9 |
| TOTAL | | | 68.6 | 160.2 |



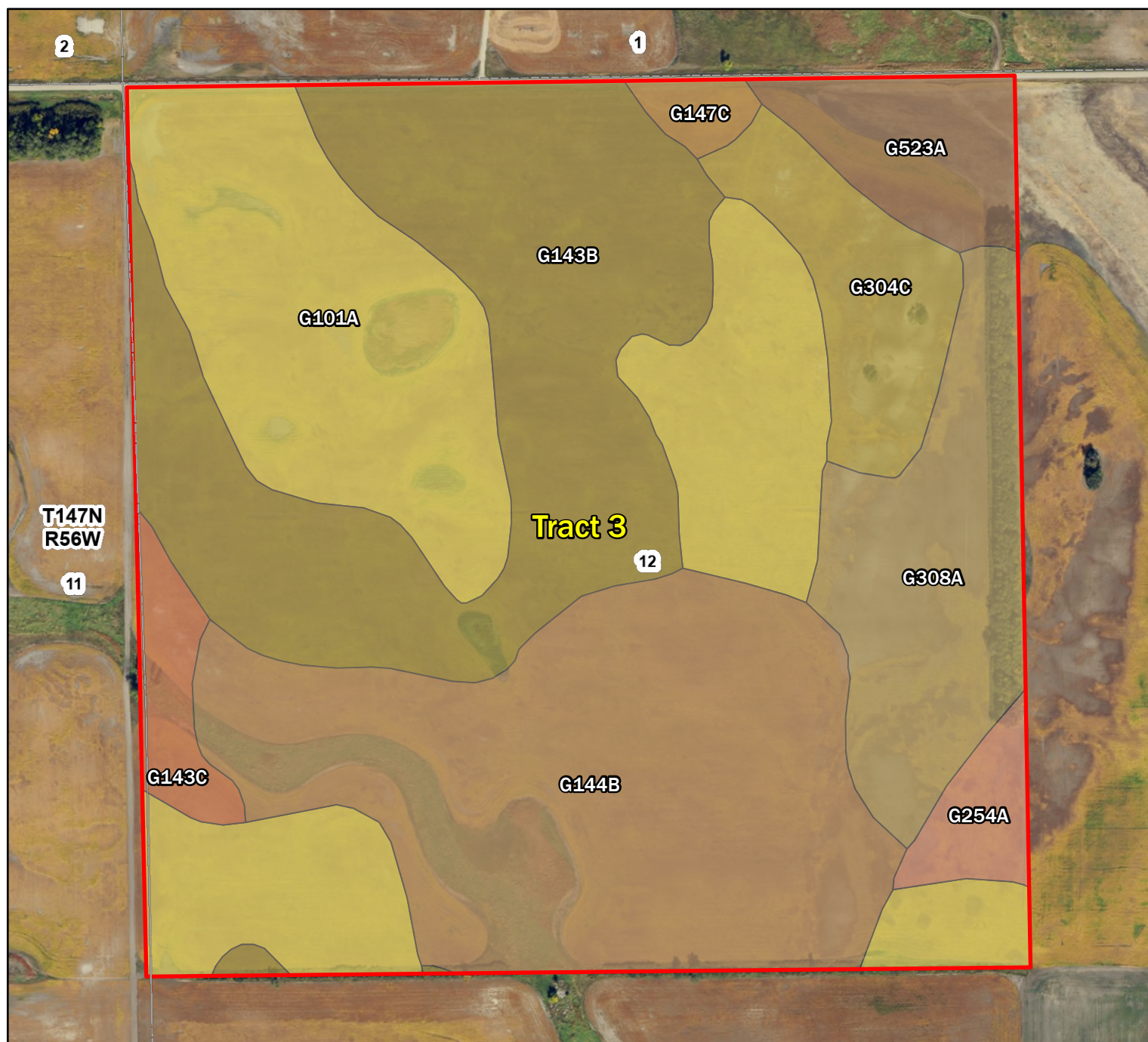
Windloss Family Trust
Steele County, North Dakota

Latitude: 47.5751° N
Longitude: 97.6809° W
Imagery Source: USDA NAIP
Soil Data Source: USDA NRCS
Boundaries are Approximate



Windloss Family Trust
Steele County, North Dakota

Latitude: 47.5682° N
Longitude: 97.7447° W
Imagery Source: USDA NAIP
Soil Data Source: USDA NRCS
Boundaries are Approximate



| Map Symbol | Name | Non-IRR LCC | PRODUCTIVITY INDEX | ACRES |
|------------|--|-------------|--------------------|-------|
| G101A | Hamerly-Wyard loams, 0 to 3 percent slopes | 2e | 74 | 44 |
| G144B | Barnes-Buse loams, 3 to 6 percent slopes | 2e | 71 | 38.9 |
| G143B | Barnes-Svea loams, 3 to 6 percent slopes | 2e | 79 | 37.4 |
| G308A | Brantford loam, 0 to 2 percent slopes | 4s | 48 | 15.3 |
| G304C | Coe-Binford complex, 6 to 9 percent slopes | 6s | 29 | 8.4 |
| G523A | Lowe-Fluvaquents, channeled complex, 0 to 2 percent slopes, frequently flooded | 6w | 21 | 6.3 |
| G143C | Barnes-Buse-Langhei loams, 6 to 9 percent slopes | 3e | 57 | 3.4 |
| G254A | Divide loam, shaly, 0 to 2 percent slopes | 2s | 58 | 2.9 |
| G147C | Buse-Barnes-Darnen loams, 3 to 9 percent slopes | 4e | 64 | 1.4 |
| TOTAL | | | 66.7 | 158.1 |



Windloss Family Trust
Steele County, North Dakota

Latitude: 47.5682° N
Longitude: 97.7447° W
Imagery Source: USDA NAIP
Soil Data Source: USDA NRCS
Boundaries are Approximate



Windloss Family Trust
Steele County, North Dakota

Latitude: 47.5031° N
Longitude: 97.7878° W
Imagery Source: USDA NAIP
Soil Data Source: USDA NRCS
Boundaries are Approximate



| Map Symbol | Name | Non-IRR LCC | PRODUCTIVITY INDEX | ACRES |
|------------|--|-------------|--------------------|-------|
| G143B | Barnes-Svea loams, 3 to 6 percent slopes | 2e | 79 | 108.5 |
| G100A | Hamerly-Tonka complex, 0 to 3 percent slopes | 2e | 61 | 22.3 |
| G101A | Hamerly-Wyard loams, 0 to 3 percent slopes | 2e | 74 | 12.5 |
| G167B | Balaton-Wyard loams, 0 to 6 percent slopes | 3e | 73 | 5.3 |
| G3A | Parnell silty clay loam, 0 to 1 percent slopes | 5w | 25 | 1.2 |
| G143C | Barnes-Buse-Langhei loams, 6 to 9 percent slopes | 3e | 57 | 0.7 |
| TOTAL | | | 75.2 | 150.6 |



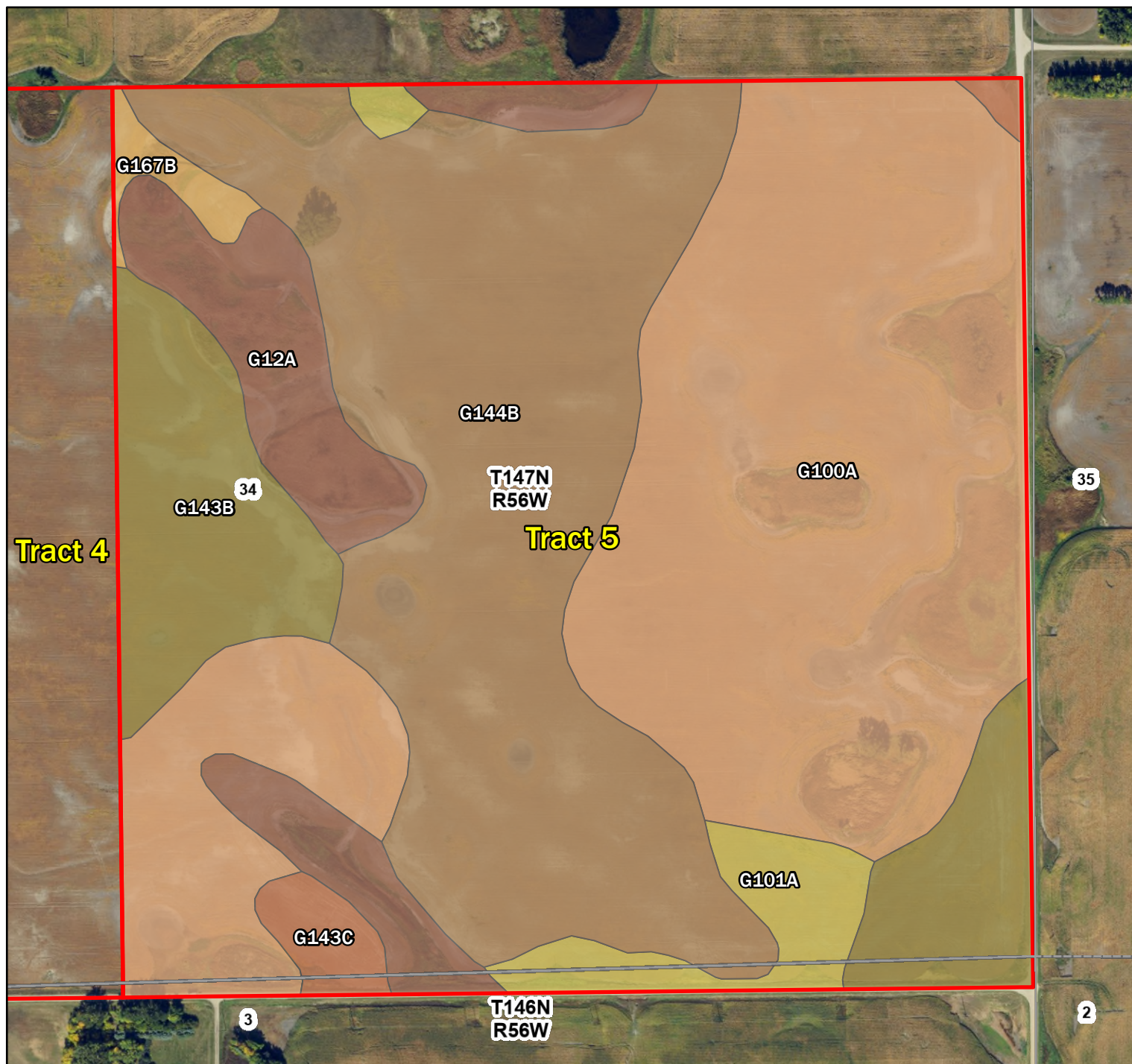
Windloss Family Trust
Steele County, North Dakota

Latitude: 47.5031° N
Longitude: 97.7878° W
Imagery Source: USDA NAIP
Soil Data Source: USDA NRCS
Boundaries are Approximate



Windloss Family Trust
Steele County, North Dakota

Latitude: 47.503° N
Longitude: 97.7771° W
Imagery Source: USDA NAIP
Soil Data Source: USDA NRCS
Boundaries are Approximate



| Map Symbol | Name | Non-IRR LCC | PRODUCTIVITY INDEX | ACRES |
|------------|--|-------------|--------------------|-------|
| G100A | Hamerly-Tonka complex, 0 to 3 percent slopes | 2e | 61 | 65.9 |
| G144B | Barnes-Buse loams, 3 to 6 percent slopes | 2e | 71 | 51.8 |
| G143B | Barnes-Svea loams, 3 to 6 percent slopes | 2e | 79 | 18.6 |
| G12A | Vallers, saline-Parnell complex, 0 to 1 percent slopes | 4w | 31 | 14.3 |
| G101A | Hamerly-Wyard loams, 0 to 3 percent slopes | 2e | 74 | 5.8 |
| G143C | Barnes-Buse-Langhei loams, 6 to 9 percent slopes | 3e | 57 | 2.5 |
| G167B | Balaton-Wyard loams, 0 to 6 percent slopes | 3e | 73 | 1.6 |
| TOTAL | | | 64.2 | 160.4 |



Windloss Family Trust
Steele County, North Dakota

Latitude: 47.503° N
Longitude: 97.7771° W
Imagery Source: USDA NAIP
Soil Data Source: USDA NRCS
Boundaries are Approximate