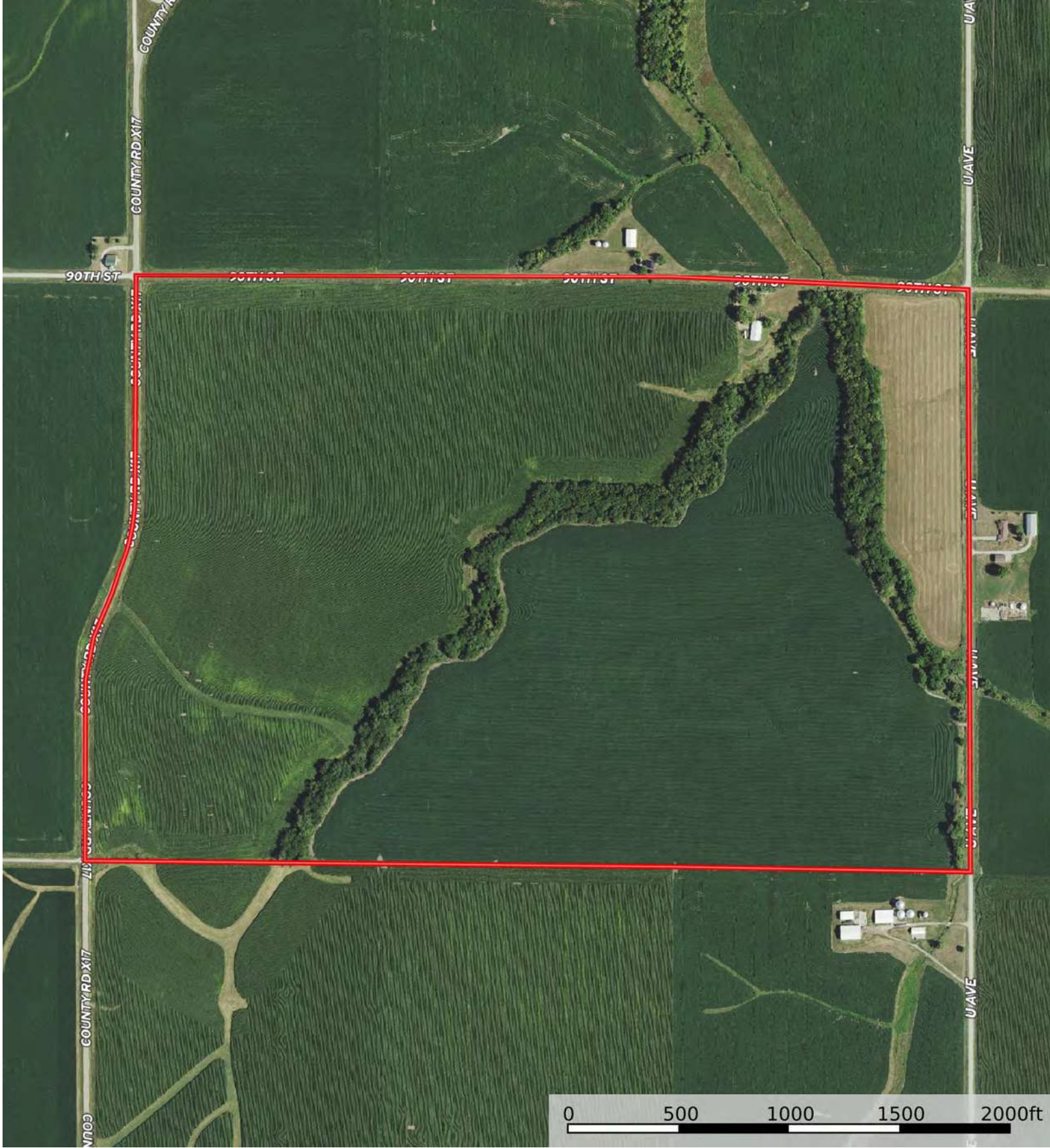
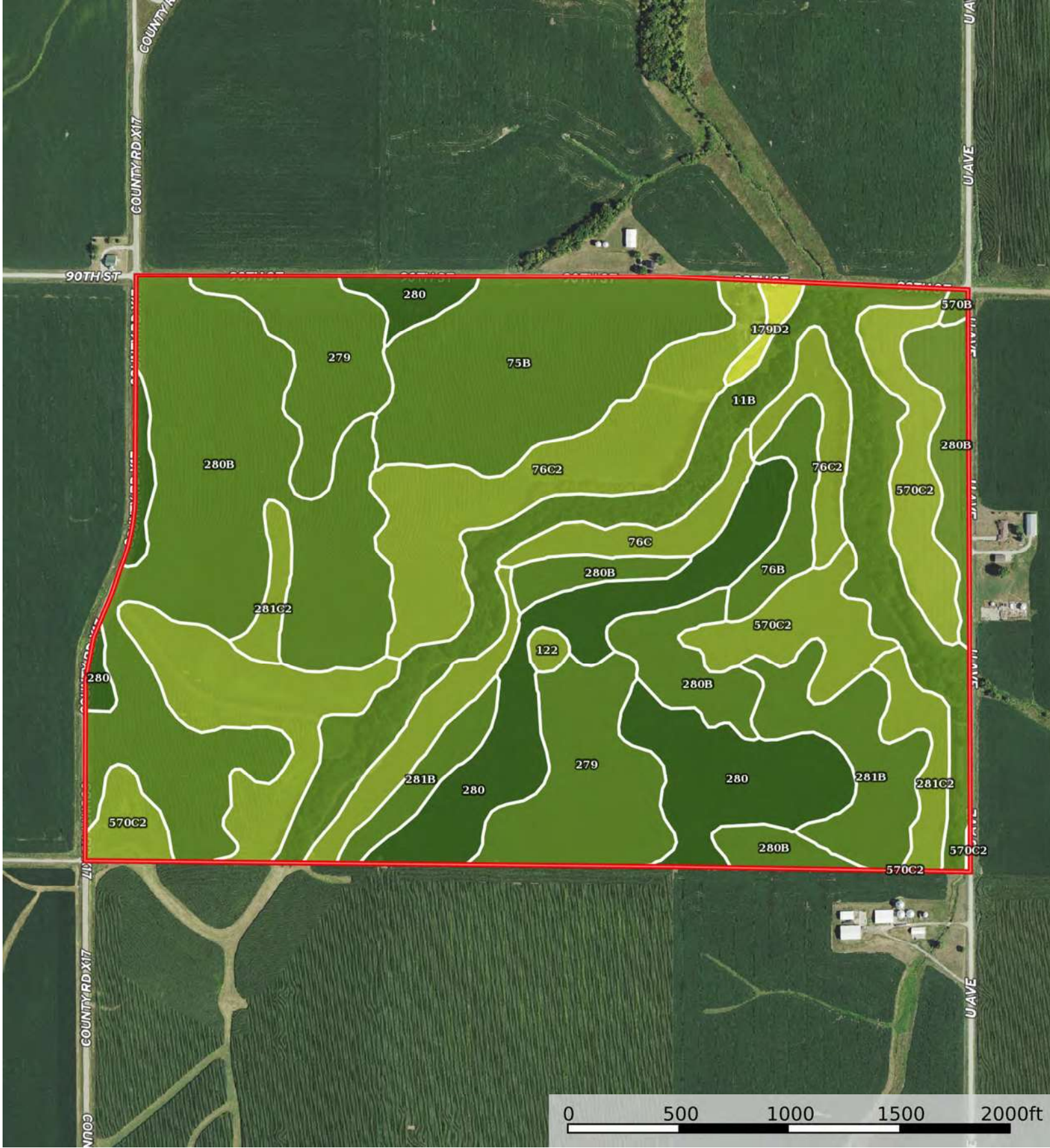


 Boundary



 Boundary



 Boundary

Boundary 237.27 ac

SOIL CODE	SOIL DESCRIPTION	ACRES	%	CSR2	CPI	NCCPI	CAP
280B	Mahaska silty clay loam, 2 to 5 percent slopes	56.03	23.61	89.0	0	86	2e
570C2	Nira silty clay loam, 5 to 9 percent slopes, moderately eroded	32.44	13.67	70.0	0	91	3e
280	Mahaska silty clay loam, 0 to 2 percent slopes	28.89	12.18	94.0	0	87	1
11B	Colo-Ely complex, 0 to 5 percent slopes	26.52	11.18	86.0	0	92	2w
76C2	Ladoga silt loam, 5 to 9 percent slopes, eroded	22.09	9.31	75.0	0	88	3e
75B	Givin silt loam, 2 to 5 percent slopes	21.85	9.21	80.0	0	90	2e
279	Taintor silty clay loam, 0 to 2 percent slopes	21.22	8.94	83.0	0	84	2w
281B	Otley silty clay loam, 2 to 5 percent slopes	12.23	5.15	91.0	0	89	2e
281C2	Otley silty clay loam, 5 to 9 percent slopes, eroded	5.67	2.39	82.0	0	83	3e
76C	Ladoga silt loam, 5 to 9 percent slopes	4.12	1.74	79.0	0	94	3e
76B	Ladoga silt loam, 2 to 5 percent slopes	4.01	1.69	86.0	0	93	2e
179D2	Gara loam, 9 to 14 percent slopes, moderately eroded	1.16	0.49	45.0	0	77	4e
122	Sperry silt loam, 0 to 1 percent slopes	0.67	0.28	33.0	0	80	3w
570B	Nira silty clay loam, 2 to 5 percent slopes	0.37	0.16	81.0	0	98	2e
TOTALS		237.27(*)	100%	83.33	-	88.15	2.16









(*) Total acres may differ in the second decimal compared to the sum of each acreage soil. This is due to a round error because we only show the acres of each soil with two decimal.

Capability Legend

Increased Limitations and Hazards

Decreased Adaptability and Freedom of Choice Users

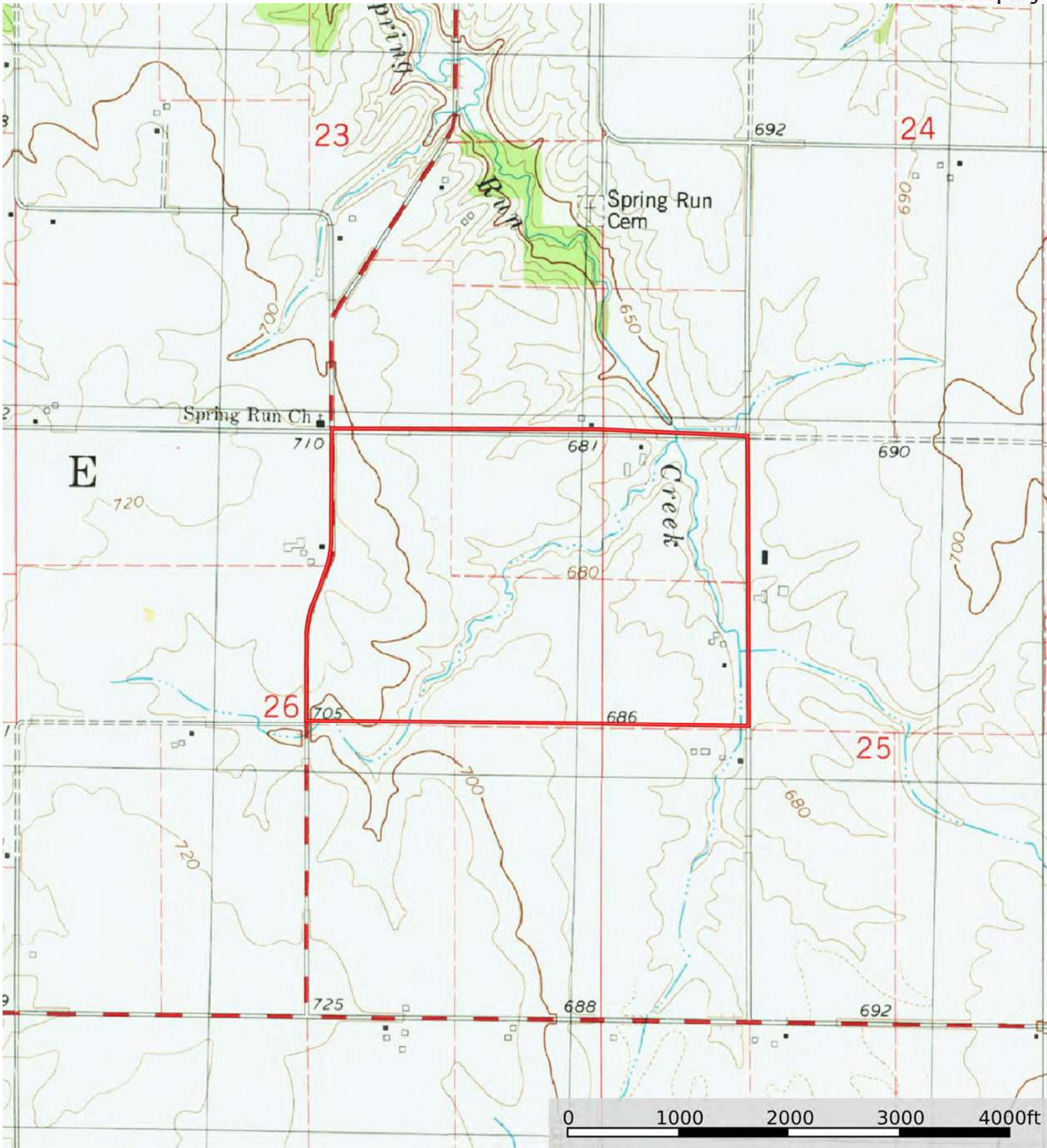
Land, Capability

								
	1	2	3	4	5	6	7	8
'Wild Life'	•	•	•	•	•	•	•	•
Forestry	•	•	•	•	•	•	•	
Limited	•	•	•	•	•	•	•	
Moderate	•	•	•	•	•	•		
Intense	•	•	•	•	•			
Limited	•	•	•	•				
Moderate	•	•	•					
Intense	•	•						
Very Intense	•							

Grazing Cultivation

(c) climatic limitations (e) susceptibility to erosion

(s) soil limitations within the rooting zone (w) excess of water



 Boundary