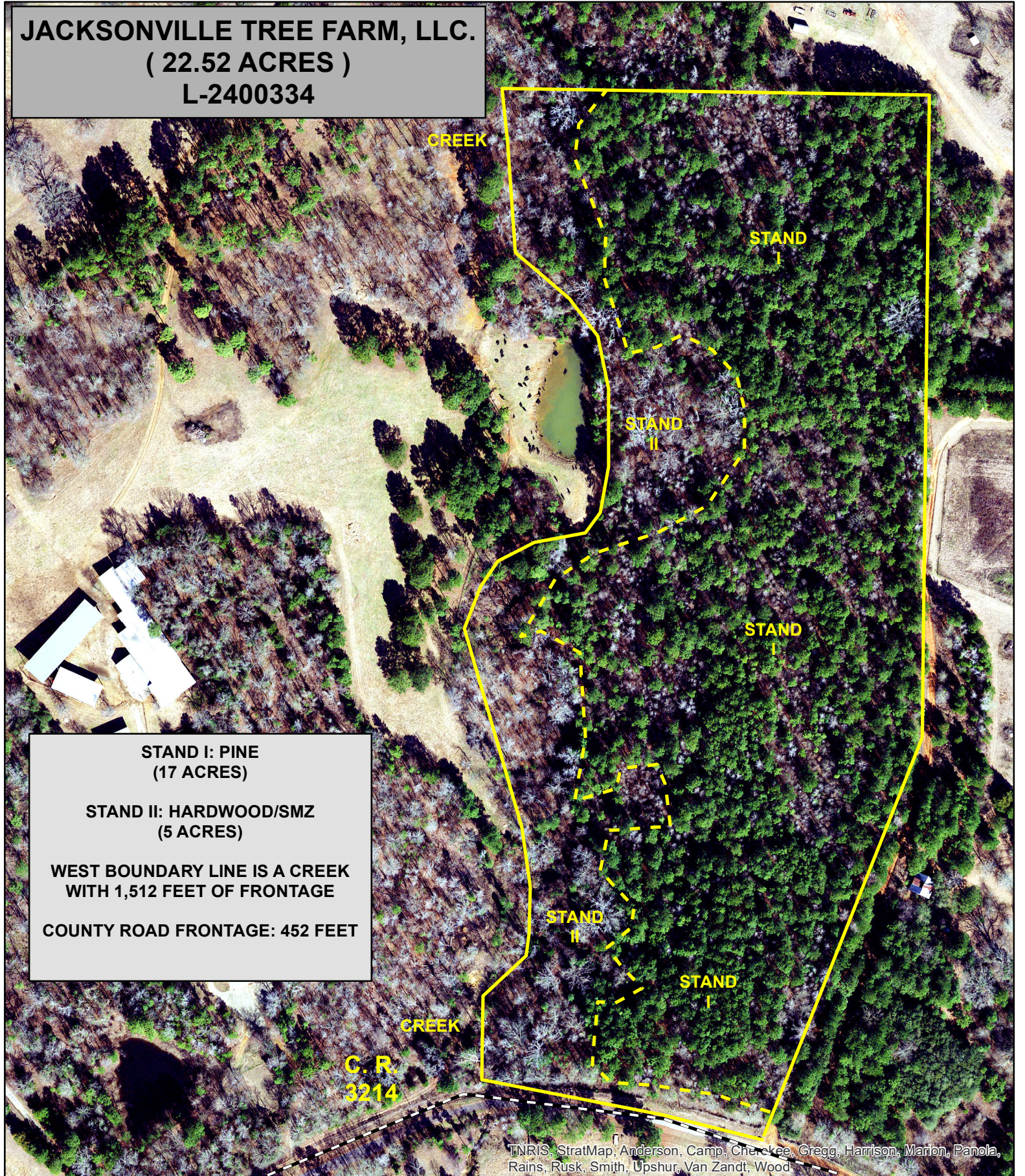


JACKSONVILLE TREE FARM, LLC.
(22.52 ACRES)
L-2400334



**STAND I: PINE
(17 ACRES)**

**STAND II: HARDWOOD/SMZ
(5 ACRES)**

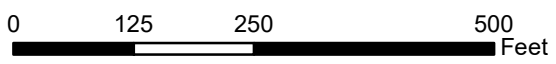
**WEST BOUNDARY LINE IS A CREEK
WITH 1,512 FEET OF FRONTAGE**

COUNTY ROAD FRONTAGE: 452 FEET

TNRIS, StratMap, Anderson, Camp, Cherokee, Gregg, Harrison, Marion, Panola, Rains, Rusk, Smith, Upshur, Van Zandt, Wood



JOSE PINEDA SURVEY, A-40
CHEROKEE COUNTY, TEXAS



2018 WINTER AERIAL PHOTO
LEAF-OFF, NATURAL COLOR
31.953218, -95.361001 COORDINATES
FNC-FRMD-(06-17-2024)-MS
MSchmitt@farmersnational.com
903-586-9375