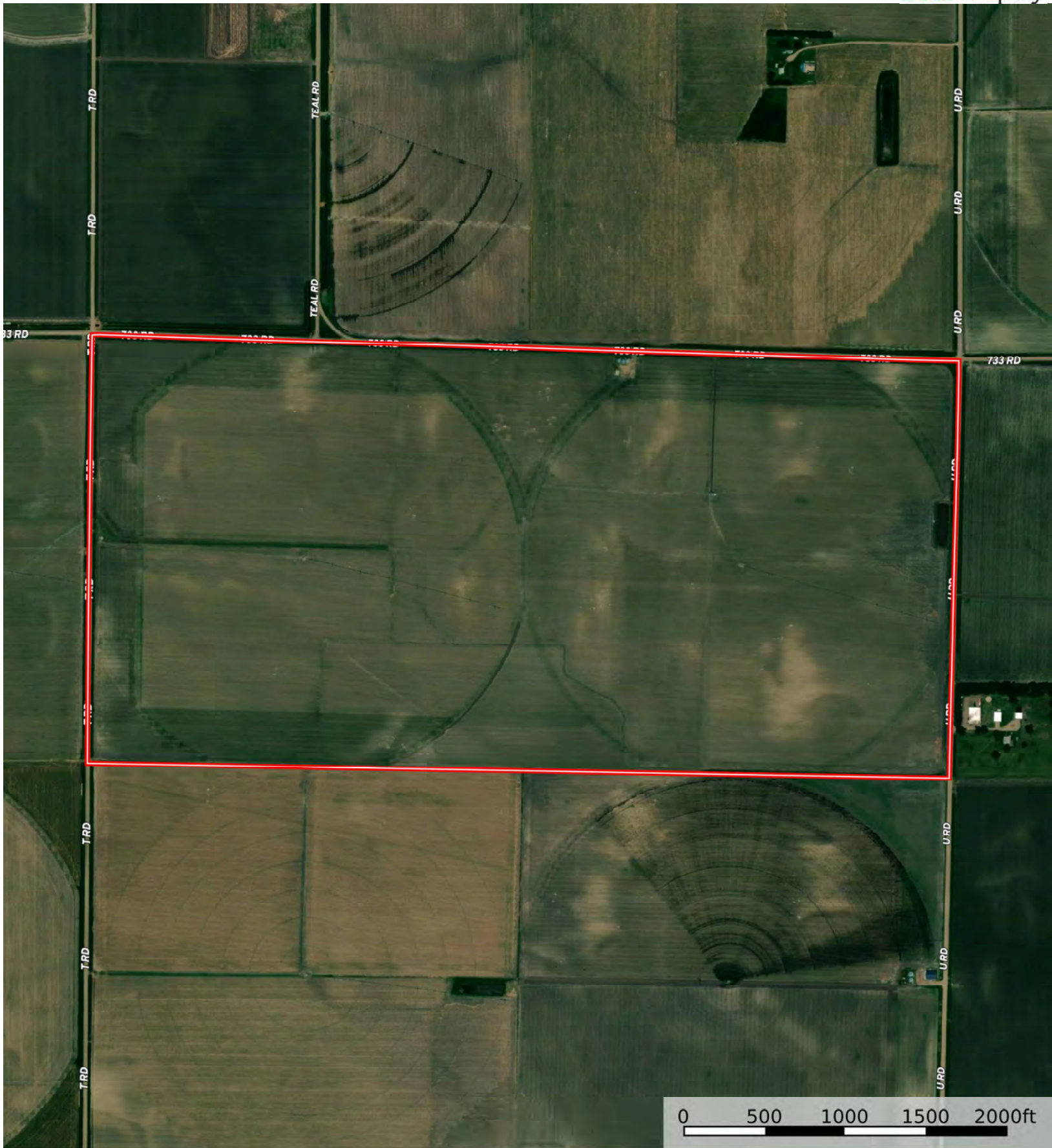




Boundary

L-2400522

Phelps County, Nebraska, 324.408 AC +/-

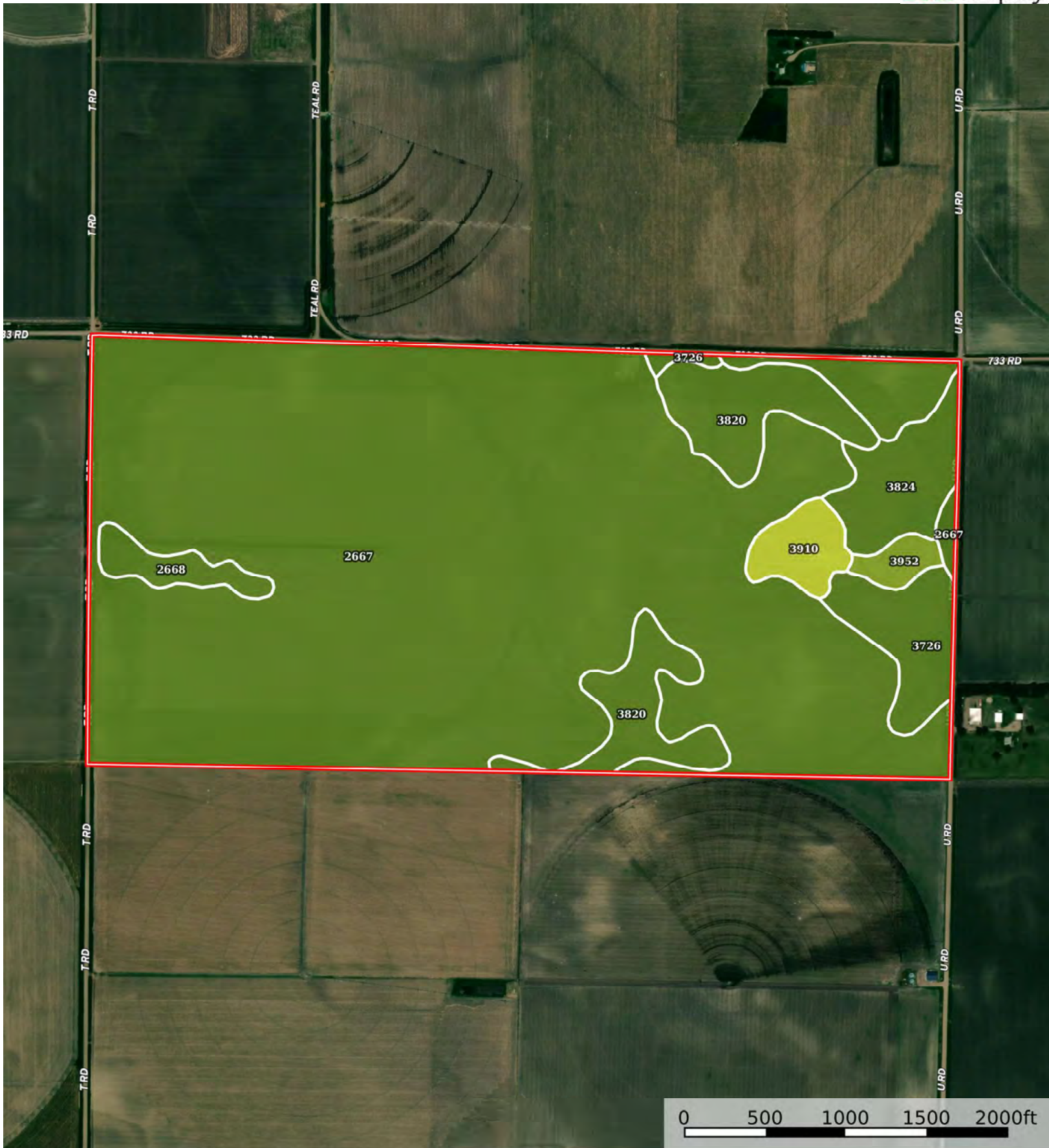


Boundary



The information contained herein was obtained from sources deemed to be reliable. Land id™ Services makes no warranties or guarantees as to the completeness or accuracy thereof.





Boundary

| Boundary 324.14 ac

SOIL CODE	SOIL DESCRIPTION	ACRES	%	CPI	NCCPI	CAP
2667	Holdrege silt loam, 0 to 1 percent slopes	264.25	81.52	0	80	2e
3820	Butler silt loam, 0 to 1 percent slopes	23.32	7.19	0	70	2w
3726	Detroit silt loam, 0 to 1 percent slopes	11.62	3.58	0	66	2c
3824	Crete silt loam, 0 to 1 percent slopes	11.34	3.5	0	63	2s
3910	Scott silt loam, frequently ponded	5.93	1.83	0	27	4w
2668	Holdrege silt loam, 1 to 3 percent slopes	4.87	1.5	0	79	2e
3952	Fillmore silt loam, frequently ponded	2.81	0.87	0	45	3w
TOTALS		324.14(*)	100%	-	76.9	2.05

(\*) Total acres may differ in the second decimal compared to the sum of each acreage soil. This is due to a round error because we only show the acres of each soil with two decimal.

### Capability Legend

Increased Limitations and Hazards

Decreased Adaptability and Freedom of Choice Users

Land, Capability

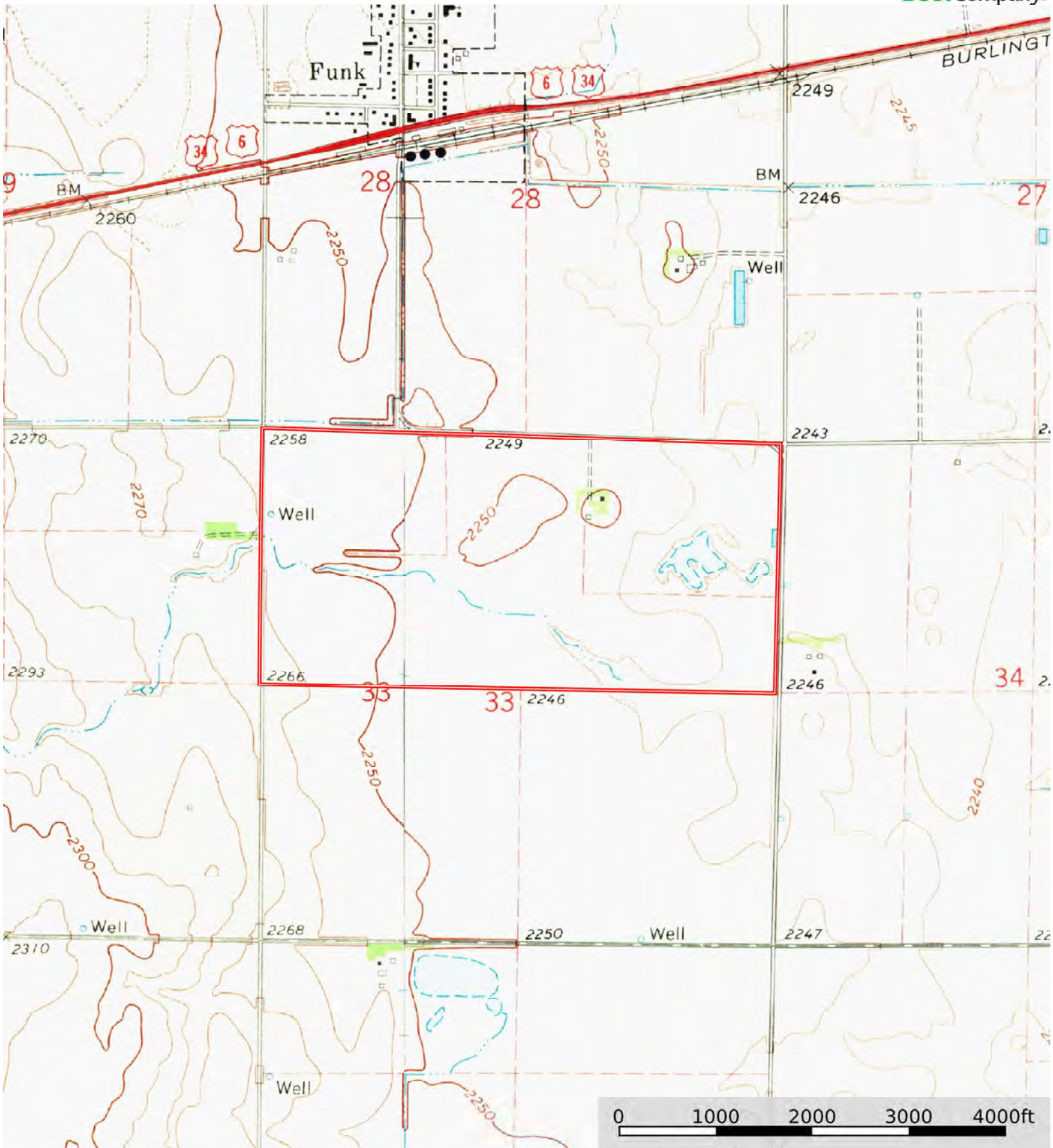
	1	2	3	4	5	6	7	8
'Wild Life'	•	•	•	•	•	•	•	•
Forestry	•	•	•	•	•	•	•	
Limited	•	•	•	•	•	•	•	
Moderate	•	•	•	•	•	•		
Intense	•	•	•	•	•			
Limited	•	•	•	•				
Moderate	•	•	•					
Intense	•	•						
Very Intense	•							

### Grazing Cultivation

(c) climatic limitations (e) susceptibility to erosion

(s) soil limitations within the rooting zone (w) excess of water





Boundary