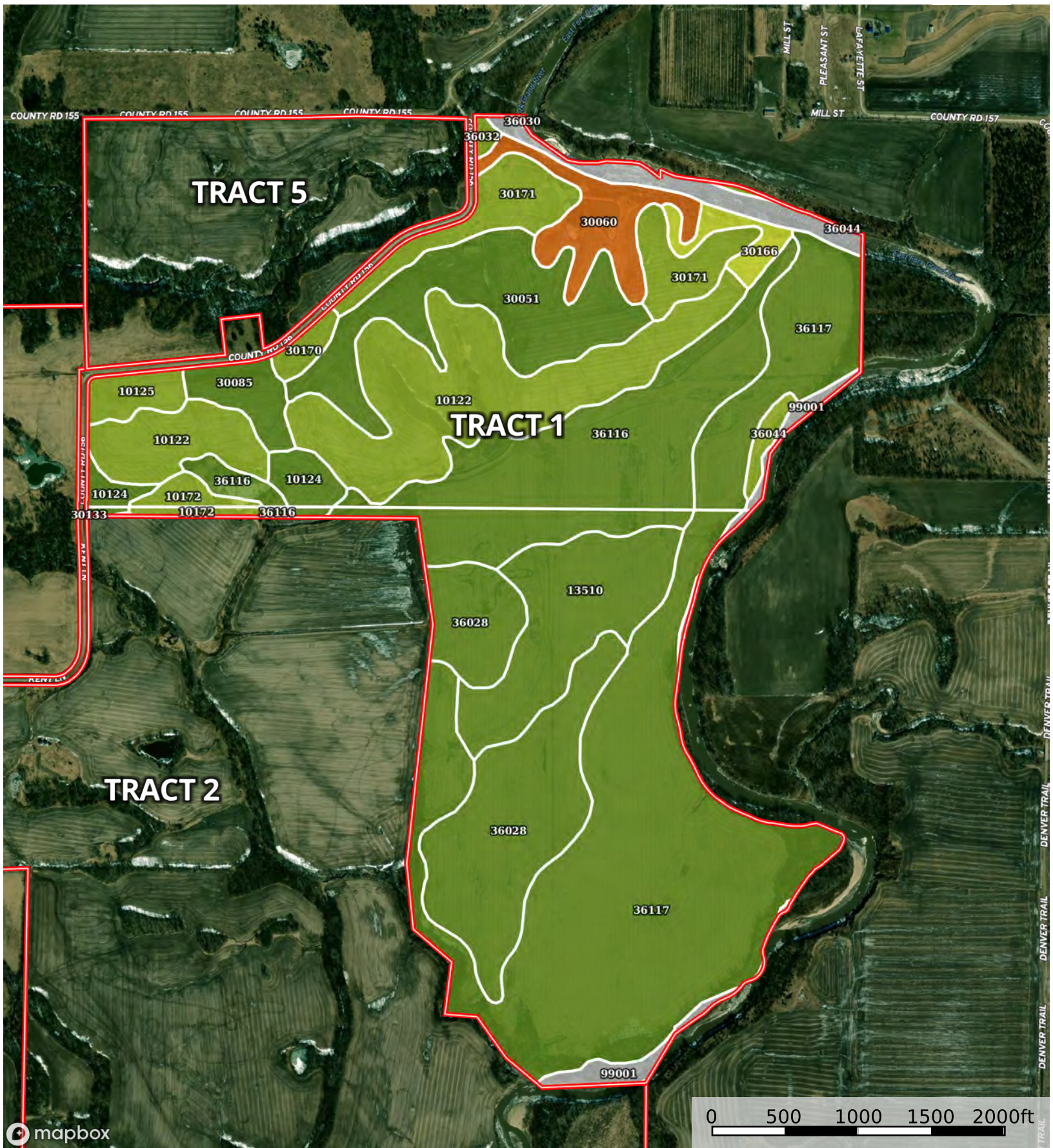


Goodson Missouri tracts

Gentry County, Worth County, Missouri, AC +/-



Boundary

| Boundary 392.28 ac

SOIL CODE	SOIL DESCRIPTION	ACRES	%	CPI	NCCPI	CAP
36117	Nodaway silt loam, heavy till, 0 to 2 percent slopes, occasionally flooded	119.4 1	30.44	0	84	2w
10122	Sharpsburg silt loam, 5 to 9 percent slopes, eroded	52.2	13.31	0	63	3e
36116	Zook silty clay loam, heavy till, 0 to 2 percent slopes, occasionally flooded	51.48	13.12	0	75	2w
36028	Nevin silt loam, 0 to 2 percent slopes, rarely flooded	42.03	10.71	0	84	2w
30051	Edina silt loam, benches, 0 to 3 percent slopes	28.96	7.38	0	71	2w
13510	Colo silty clay loam, heavy till, 0 to 2 percent slopes, occasionally flooded	25.19	6.42	0	95	2w
30171	Pershing silt loam, terrace, 2 to 5 percent slopes	17.18	4.38	0	73	3e
99001	Water	12.87	3.28	0	-	-
30060	Gara loam, 20 to 35 percent slopes	12.21	3.11	0	18	7e
10124	Sharpsburg silty clay loam, loess hill, 2 to 5 percent slopes	6.37	1.62	0	76	2e
30085	Grundy silt loam, 2 to 5 percent slopes	6.17	1.57	0	74	2e
10125	Sharpsburg silty clay loam, loess hill, 5 to 9 percent slopes	4.47	1.14	0	84	3e
30166	Pershing and Grundy soils, benches, 5 to 9 percent slopes, severely eroded	4.28	1.09	0	65	4e
10172	Shelby clay loam, 9 to 14 percent slopes, moderately eroded	3.88	0.99	0	71	3e
30170	Pershing silt loam, 5 to 9 percent slopes, eroded	2.36	0.6	0	72	3e
36044	Wabash silty clay loam, 0 to 2 percent slopes, occasionally flooded	2.32	0.59	0	51	3w
36032	Nodaway silt loam, 0 to 2 percent slopes, overflow, frequently flooded	0.82	0.21	0	62	3w
36030	Nodaway silt loam, 0 to 2 percent slopes, overflow, occasionally flooded	0.06	0.02	0	84	2w
30133	Lamoni clay loam, 5 to 9 percent slopes, eroded	0.02	0.01	0	58	3e
TOTALS		392.2 8(*)	100%	-	73.54	2.4









(*) Total acres may differ in the second decimal compared to the sum of each acreage soil. This is due to a round error because we only show the acres of each soil with two decimal.

Capability Legend

Increased Limitations and Hazards

Decreased Adaptability and Freedom of Choice Users

Land, Capability

								
	1	2	3	4	5	6	7	8
'Wild Life'	•	•	•	•	•	•	•	•
Forestry	•	•	•	•	•	•	•	
Limited	•	•	•	•	•	•	•	
Moderate	•	•	•	•	•	•		
Intense	•	•	•	•	•			
Limited	•	•	•	•				
Moderate	•	•	•					
Intense	•	•						
Very Intense	•							

Grazing Cultivation

(c) climatic limitations (e) susceptibility to erosion

(s) soil limitations within the rooting zone (w) excess of water