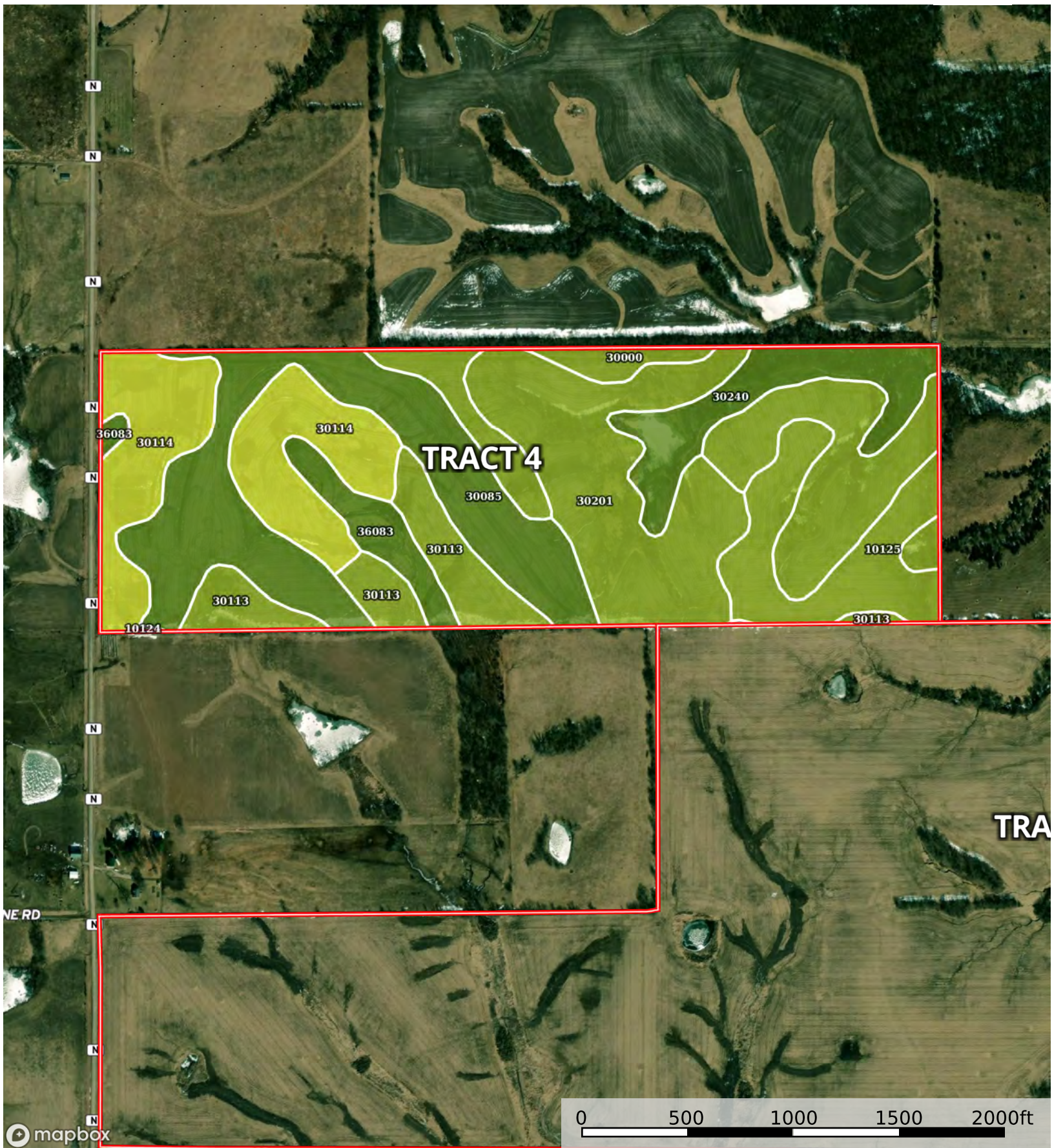


Goodson Missouri tracts

Gentry County, Worth County, Missouri, AC +/-



mapbox

Boundary

| Boundary 120.32 ac

SOIL CODE	SOIL DESCRIPTION	ACRES	%	CPI	NCCPI	CAP
30085	Grundy silt loam, 2 to 5 percent slopes	25.01	20.78	0	74	2e
30201	Shelby loam, 9 to 14 percent slopes, moderately eroded	21.89	18.19	0	69	3e
30114	Lagonda and Clarinda soils, 5 to 11 percent slopes, severely eroded	19.22	15.97	0	60	4e
30200	Shelby loam, 9 to 14 percent slopes	13.28	11.04	0	72	3e
10125	Sharpsburg silty clay loam, loess hill, 5 to 9 percent slopes	11.06	9.19	0	84	3e
30113	Lagonda and Clarinda soils, 5 to 11 percent slopes, eroded	10.02	8.33	0	62	3e
30240	Olmitz-Kennebec complex, 2 to 5 percent slopes	9.34	7.76	0	81	2e
30000	Adair and Shelby loams, 5 to 9 percent slopes	5.73	4.76	0	74	3e
36083	Kennebec silt loam, 1 to 4 percent slopes, occasionally flooded	4.69	3.9	0	91	2w
10124	Sharpsburg silty clay loam, loess hill, 2 to 5 percent slopes	0.08	0.07	0	76	2e
TOTALS		120.32(*)	100%	-	71.75	2.83









(*) Total acres may differ in the second decimal compared to the sum of each acreage soil. This is due to a round error because we only show the acres of each soil with two decimal.

Capability Legend

Increased Limitations and Hazards

Decreased Adaptability and Freedom of Choice Users

Land, Capability

								
	1	2	3	4	5	6	7	8
'Wild Life'	•	•	•	•	•	•	•	•
Forestry	•	•	•	•	•	•	•	
Limited	•	•	•	•	•	•	•	
Moderate	•	•	•	•	•	•		
Intense	•	•	•	•	•			
Limited	•	•	•	•				
Moderate	•	•	•					
Intense	•	•						
Very Intense	•							

Grazing Cultivation

(c) climatic limitations (e) susceptibility to erosion

(s) soil limitations within the rooting zone (w) excess of water